

Swiss Association of Cancer Registries

Cancer in Fribourg

Volume 2 - Statistics of Mortality

1985 - 2003

Statistics and design

Pierre Pury

Epidemiologic concepts

Jean-Michel Lutz
Bertrand Camey

Causes of death register

Swiss Federal Statistical Office

Christoph Junker
Monika Diebold

Coordinates

www.asrt.ch
www.bfs.admin.ch

April 2006

Table of Contents

Introduction	3
Population	4
Summary	
Number of deaths	5
Percentage distribution by site	6
Age standardised rates, european population, per 100'000	7
Age standardised rates, world population, per 100'000	8
All malignant cancers	9
Oral cavity & pharynx	10
Oral cavity, pharynx, larynx	11
Oesophagus	12
Stomach	13
Colon, rectum	14
Liver & intrahepatic bile ducts	15
Gallbladder & extrahepatic bile tract	16
Pancreas	17
Larynx	18
Lung, trachea	19
Pleura	20
Bones, joints, cartilage	21
Soft tissues	22
Skin melanoma	23
Breast	24
Cervix uteri	25
Corpus uteri	26
Ovary	27
Prostate	28
Testis	29
Bladder	30
Kidney & urinary organs	31
Brain & central nerves	32
Thyroid	33
Non Hodgkin lymphoma	34
Hodgkin's disease	35
Multiple myeloma	36
Leukaemia	37

Introduction

Principle

The present document shows the tables and figures of number of deaths and of mortality rates, based on the data collected by the Swiss Federal Statistical Office. Some comparisons are done with values obtained for the whole country. For more detailed geographic comparisons, please refer to Schüler & Bopp [1]. As the cause of death coding changed in 1995 from ICD8 to ICD10, some priority rules were modified accordingly in case of multi-pathology. In order to keep series comparable over the whole period, the data of the main cancers before 1995 were corrected by a factor usually comprised between 0.9 and 1 according to cancer, gender and age group. This acted as a statistical rejection of a small part of the counted death. The rejected cases would have been attributed to other groups of disease with the modern rules. The correction factors have been determined for the main cancers only [2] [3]. These are marked with an asterisk in the summary list. They totalise about 73% of all deaths by cancer. The others were not corrected and are suspicious of biases in the trends.

Presentation

The various epidemiological indicators are regrouped for each cancer site, instead of being distributed in different documents. The new presentation permits generalised graphing of the results, especially useful when trends are considered. In such a way, each page contains a synthetic view of a cancer site or group. A list of 29 sites or groups has been retained. Other sites or more specific cancers, for instance restricted to precise morphology types, can be computed on demand and presented the same way.

Bibliography

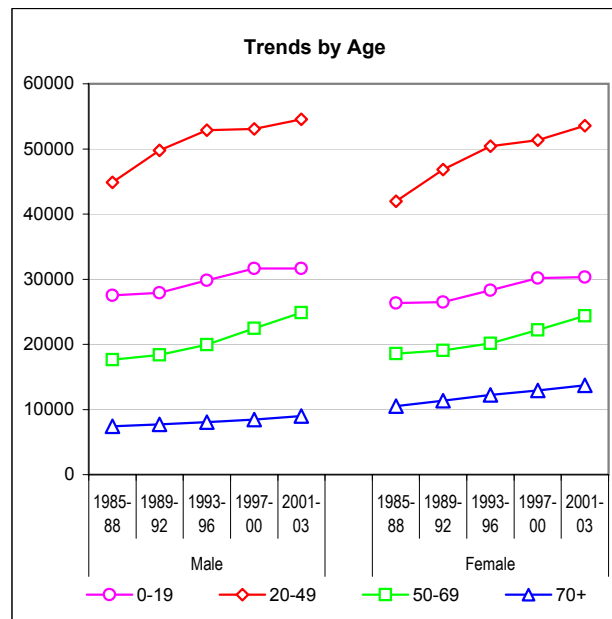
[1] Schüler G & Bopp M (1997). Atlas der Krebsmortalität in der Schweiz. Birkhäuser Verlag

[2] Lutz JM, Pury P, Fioretta G, Raymond L (2004). The impact of coding process on observed mortality trends in Switzerland. European Journal of Cancer Prevention.

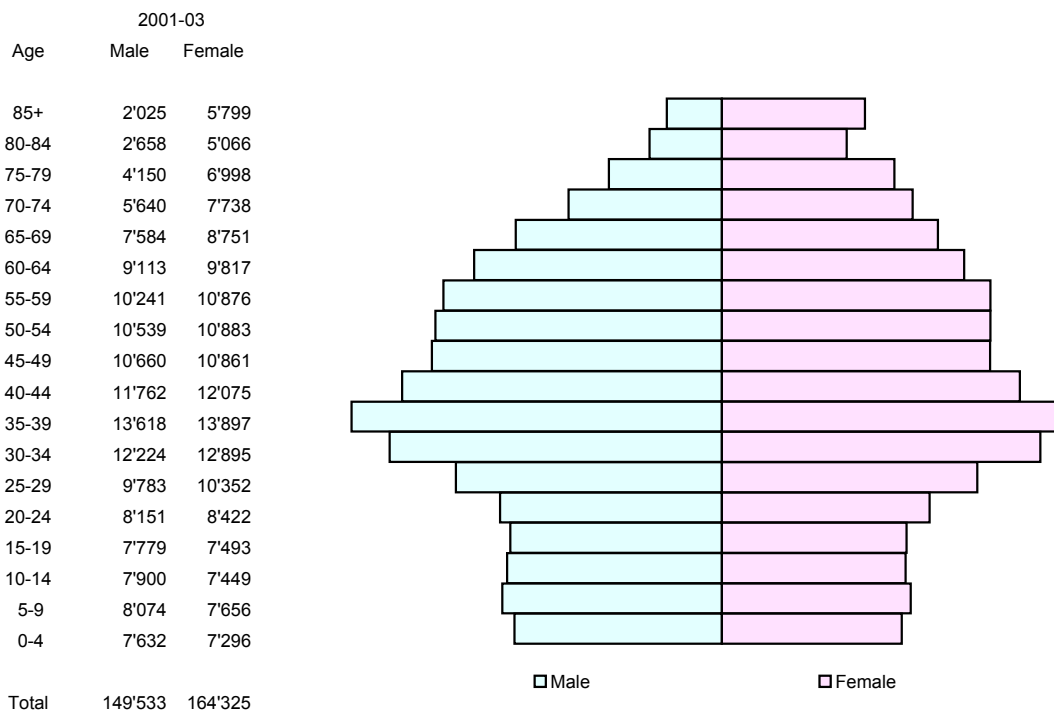
[3]] Lutz JM, Pury P, Fioretta G, Raymond L (2004). L'amélioration récente de la précision de la statistique de mortalité par cancer et son effet sur l'estimation des tendances chronologiques.

Annual population by age-group & mean annual trends

Sex	Period	0-19	20-49	50-69	70+	Total
Male	1985-88	27'512	44'860	17'663	7'443	97'477
	1989-92	27'891	49'803	18'383	7'706	103'783
	1993-96	29'821	52'897	19'960	8'074	110'751
	1997-00	31'651	53'069	22'446	8'455	115'621
	2001-03	31'632	54'532	24'875	8'995	120'034
Female	1985-88	26'334	41'975	18'561	10'541	97'410
	1989-92	26'486	46'833	19'083	11'334	103'736
	1993-96	28'302	50'425	20'170	12'212	111'108
	1997-00	30'151	51'359	22'223	12'938	116'671
	2001-03	30'306	53'557	24'376	13'733	121'971
Male	Annual trend	1.010	1.011	1.021	1.011	1.012
Female	Annual trend	1.010	1.014	1.017	1.016	1.014



Pyramid of ages - last period - yearly average



Number of deaths

ICD10	Male	Site	Deaths by period					Total	Yearly average				
			1985-88	1989-92	1993-96	1997-00	2001-03		1985-88	1989-92	1993-96	1997-00	2001-03
C00-14	*	Oral Cavity & Pharynx	49	53	39	66	44	251	12	13	10	17	15
C15		Oesophagus	62	53	58	55	50	278	16	13	15	14	17
C16	*	Stomach	78	79	65	41	44	307	20	20	16	10	15
C18-21	*	Colon, Rectum	114	118	118	147	67	564	29	29	30	37	22
C22		Liver & Intrahepatic Bile Ducts	19	42	52	52	36	201	5	11	13	13	12
C23-24		Gallbladder & Extrahepatic Bile Tract	15	11	7	9	4	46	4	3	2	2	1
C25	*	Pancreas	64	54	48	49	44	259	16	14	12	12	15
C32	*	Larynx	18	18	14	11	7	67	4	5	3	3	2
C33-34	*	Lung, Trachea	292	302	283	302	214	1'393	73	75	71	76	71
C38.4, C45.0		Pleura	3	6	7	3	4	23	1	2	2	1	1
C40-41		Bones, Joints, Cartilage	6	2	3	1	2	14	2	1	1	0	1
C47, C49		Soft Tissues	4	3	7	4	4	22	1	1	2	1	1
C43	*	Skin Melanoma	15	12	15	15	21	77	4	3	4	4	7
C50		Breast	1	5	2	0	0	8	0	1	1	0	0
C53		Cervix Uteri	-	-	-	-	-	-	-	-	-	-	-
C54-55		Corpus Uteri	-	-	-	-	-	-	-	-	-	-	-
C56		Ovary	-	-	-	-	-	-	-	-	-	-	-
C61	*	Prostate	104	127	157	127	123	638	26	32	39	32	41
C62	*	Testis	4	2	1	0	1	8	1	1	0	0	0
C67	*	Bladder	27	33	33	33	23	149	7	8	8	8	8
C64-66, C68		Kidney & Urinary Organs	24	33	21	27	22	127	6	8	5	7	7
C70-72	*	Brain & Central Nerves	18	19	36	26	16	115	4	5	9	7	5
C73	*	Thyroid	7	7	3	3	2	22	2	2	1	1	1
C82-88		Non Hodgkin Lymphoma	29	27	29	28	23	136	7	7	7	7	8
C81		Hodgkin's Disease	7	4	2	1	1	15	2	1	1	0	0
C90		Multiple Myeloma	23	16	25	18	11	93	6	4	6	5	4
C91-95		Leukaemia	25	30	41	35	19	150	6	8	10	9	6
...		Others	73	78	86	99	73	409	18	20	21	25	24
C00-97	*	All malignant Cancers	1'080	1'134	1'150	1'152	855	5'371	270	283	287	288	285

* Cancers for which the numbers of deaths are corrected before 1995

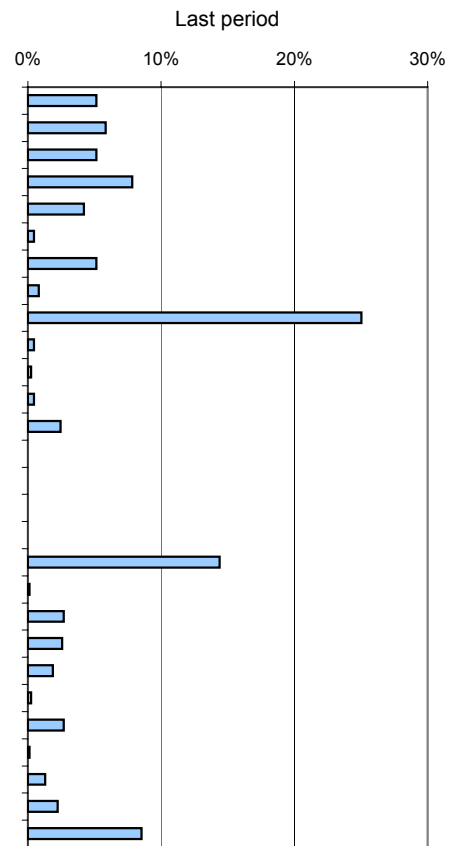
ICD10	Female	Site	Deaths by period					Total	Yearly average				
			1985-88	1989-92	1993-96	1997-00	2001-03		1985-88	1989-92	1993-96	1997-00	2001-03
C00-14	*	Oral Cavity & Pharynx	6	5	8	12	10	41	1	1	2	3	3
C15		Oesophagus	12	19	16	17	10	74	3	5	4	4	3
C16	*	Stomach	43	33	37	34	14	161	11	8	9	9	5
C18-21	*	Colon, Rectum	104	88	106	99	93	491	26	22	27	25	31
C22		Liver & Intrahepatic Bile Ducts	8	16	20	15	22	81	2	4	5	4	7
C23-24		Gallbladder & Extrahepatic Bile Tract	20	20	17	17	10	84	5	5	4	4	3
C25	*	Pancreas	43	66	45	50	34	238	11	16	11	13	11
C32	*	Larynx	1	2	1	0	2	6	0	0	0	0	1
C33-34	*	Lung, Trachea	32	40	54	90	64	280	8	10	14	23	21
C38.4, C45.0		Pleura	2	1	3	2	0	8	1	0	1	1	0
C40-41		Bones, Joints, Cartilage	1	0	1	2	0	4	0	0	0	1	0
C47, C49		Soft Tissues	5	3	7	2	3	20	1	1	2	1	1
C43	*	Skin Melanoma	11	11	12	13	9	56	3	3	3	3	3
C50	*	Breast	142	155	156	176	118	746	35	39	39	44	39
C53	*	Cervix Uteri	30	12	12	11	5	70	7	3	3	3	2
C54-55	*	Corpus Uteri	24	19	28	21	17	109	6	5	7	5	6
C56	*	Ovary	36	55	52	48	49	240	9	14	13	12	16
C61		Prostate	-	-	-	-	-	-	-	-	-	-	-
C62		Testis	-	-	-	-	-	-	-	-	-	-	-
C67	*	Bladder	12	13	16	12	13	67	3	3	4	3	4
C64-66, C68		Kidney & Urinary Organs	21	13	19	11	13	77	5	3	5	3	4
C70-72	*	Brain & Central Nerves	21	14	24	26	14	98	5	3	6	7	5
C73	*	Thyroid	3	8	7	4	5	26	1	2	2	1	2
C82-88		Non Hodgkin Lymphoma	23	28	28	28	17	124	6	7	7	7	6
C81		Hodgkin's Disease	3	3	0	2	2	10	1	1	0	1	1
C90		Multiple Myeloma	11	13	14	17	15	70	3	3	4	4	5
C91-95		Leukaemia	36	30	17	27	16	126	9	8	4	7	5
...		Others	65	78	75	82	52	353	16	20	19	21	17
C00-97	*	All malignant Cancers	714	746	775	818	607	3'659	178	186	194	205	202

* Cancers for which the numbers of deaths are corrected before 1995

Percentage distribution by site

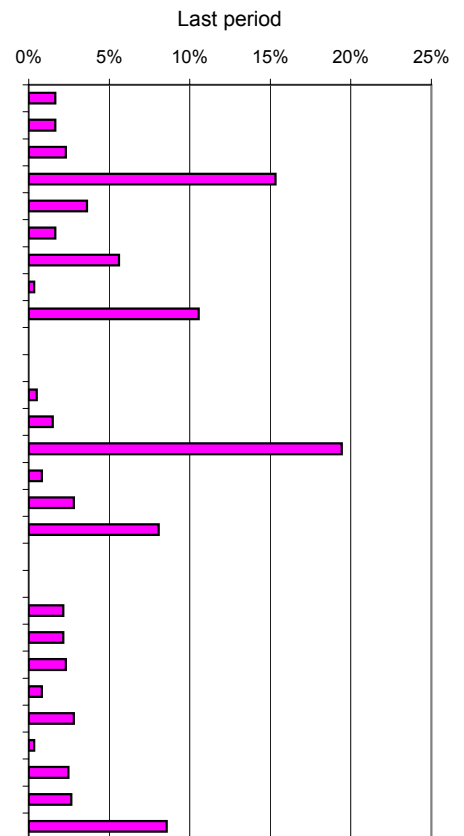
Male		1985-88	1989-92	1993-96	1997-00	2001-03
ICD10	Site					
C00-14	* Oral Cavity & Pharynx	4.6%	4.6%	3.4%	5.7%	5.1%
C15	Oesophagus	5.7%	4.7%	5.0%	4.8%	5.8%
C16	* Stomach	7.2%	7.0%	5.6%	3.6%	5.1%
C18-21	* Colon, Rectum	10.6%	10.4%	10.3%	12.8%	7.8%
C22	Liver & Intrahepatic Bile Ducts	1.8%	3.7%	4.5%	4.5%	4.2%
C23-24	Gallbladder & Extrahepatic Bile Tract	1.4%	1.0%	0.6%	0.8%	0.5%
C25	* Pancreas	5.9%	4.8%	4.2%	4.3%	5.1%
C32	* Larynx	1.6%	1.6%	1.2%	1.0%	0.8%
C33-34	* Lung, Trachea	27.1%	26.6%	24.6%	26.2%	25.0%
C38.4, C45.0	Pleura	0.3%	0.5%	0.6%	0.3%	0.5%
C40-41	Bones, Joints, Cartilage	0.6%	0.2%	0.3%	0.1%	0.2%
C47, C49	Soft Tissues	0.4%	0.3%	0.6%	0.3%	0.5%
C43	* Skin Melanoma	1.3%	1.1%	1.3%	1.3%	2.5%
C50	Breast	0.1%	0.4%	0.2%	0.0%	0.0%
C53	Cervix Uteri	-	-	-	-	-
C54-55	Corpus Uteri	-	-	-	-	-
C56	Ovary	-	-	-	-	-
C61	* Prostate	9.7%	11.2%	13.6%	11.0%	14.4%
C62	* Testis	0.3%	0.2%	0.1%	0.0%	0.1%
C67	* Bladder	2.5%	2.9%	2.9%	2.9%	2.7%
C64-66, C68	Kidney & Urinary Organs	2.2%	2.9%	1.8%	2.3%	2.6%
C70-72	* Brain & Central Nerves	1.7%	1.7%	3.1%	2.3%	1.9%
C73	* Thyroid	0.6%	0.6%	0.3%	0.3%	0.2%
C82-88	Non Hodgkin Lymphoma	2.7%	2.4%	2.5%	2.4%	2.7%
C81	Hodgkin's Disease	0.6%	0.4%	0.2%	0.1%	0.1%
C90	Multiple Myeloma	2.1%	1.4%	2.2%	1.6%	1.3%
C91-95	Leukaemia	2.3%	2.6%	3.6%	3.0%	2.2%
...	Others	6.7%	6.9%	7.4%	8.6%	8.5%
C00-97	* All malignant Cancers	100%	100%	100%	100%	100%

* Cancers for which the numbers of deaths are corrected before 1995



Female		1985-88	1989-92	1993-96	1997-00	2001-03
ICD10	Site					
C00-14	* Oral Cavity & Pharynx	0.8%	0.6%	1.1%	1.5%	1.6%
C15	Oesophagus	1.7%	2.5%	2.1%	2.1%	1.6%
C16	* Stomach	6.0%	4.5%	4.8%	4.2%	2.3%
C18-21	* Colon, Rectum	14.6%	11.9%	13.7%	12.1%	15.3%
C22	Liver & Intrahepatic Bile Ducts	1.1%	2.1%	2.6%	1.8%	3.6%
C23-24	Gallbladder & Extrahepatic Bile Tract	2.8%	2.7%	2.2%	2.1%	1.6%
C25	* Pancreas	6.1%	8.8%	5.8%	6.1%	5.6%
C32	* Larynx	0.1%	0.2%	0.1%	0.0%	0.3%
C33-34	* Lung, Trachea	4.5%	5.3%	7.0%	11.0%	10.5%
C38.4, C45.0	Pleura	0.3%	0.1%	0.4%	0.2%	0.0%
C40-41	Bones, Joints, Cartilage	0.1%	0.0%	0.1%	0.2%	0.0%
C47, C49	Soft Tissues	0.7%	0.4%	0.9%	0.2%	0.5%
C43	* Skin Melanoma	1.5%	1.5%	1.5%	1.6%	1.5%
C50	* Breast	19.9%	20.8%	20.1%	21.5%	19.4%
C53	* Cervix Uteri	4.2%	1.7%	1.5%	1.3%	0.8%
C54-55	* Corpus Uteri	3.3%	2.6%	3.6%	2.6%	2.8%
C56	* Ovary	5.0%	7.4%	6.7%	5.9%	8.1%
C61	Prostate	-	-	-	-	-
C62	Testis	-	-	-	-	-
C67	* Bladder	1.7%	1.7%	2.1%	1.5%	2.1%
C64-66, C68	Kidney & Urinary Organs	2.9%	1.7%	2.5%	1.3%	2.1%
C70-72	* Brain & Central Nerves	2.9%	1.9%	3.1%	3.2%	2.3%
C73	* Thyroid	0.4%	1.0%	0.9%	0.5%	0.8%
C82-88	Non Hodgkin Lymphoma	3.2%	3.8%	3.6%	3.4%	2.8%
C81	Hodgkin's Disease	0.4%	0.4%	0.0%	0.2%	0.3%
C90	Multiple Myeloma	1.5%	1.7%	1.8%	2.1%	2.5%
C91-95	Leukaemia	5.0%	4.0%	2.2%	3.3%	2.6%
...	Others	9.2%	10.5%	9.7%	10.0%	8.6%
C00-97	* All malignant Cancers	100%	100%	100%	100%	100%

* Cancers for which the numbers of deaths are corrected before 1995



Age standardised rates, european population, per 100'000

ICD10	Male		Fribourg					Whole Switzerland				
	Site		1985-88	1989-92	1993-96	1997-00	2001-03	1985-88	1989-92	1993-96	1997-00	2001-03
C00-14	* Oral Cavity & Pharynx		14.4	14.1	9.6	15.3	12.2	8.6	8.6	7.2	7.5	6.5
C15	Oesophagus		16.2	13.2	14.2	12.6	13.6	8.4	8.1	7.6	7.2	7.5
C16	* Stomach		20.0	19.1	14.4	8.8	11.9	16.1	14.1	11.2	9.4	8.2
C18-21	* Colon, Rectum		29.8	29.5	27.3	32.1	18.3	27.6	26.1	24.5	22.3	19.7
C22	Liver & Intrahepatic Bile Ducts		4.8	10.4	12.9	11.7	10.2	7.5	8.2	8.6	8.8	9.0
C23-24	Gallbladder & Extrahepatic Bile Tract		3.5	2.4	1.7	2.1	1.2	2.4	2.4	2.1	1.9	1.5
C25	* Pancreas		16.7	13.9	11.6	10.9	12.0	11.4	11.8	11.0	10.4	10.9
C32	* Larynx		4.7	4.7	3.3	2.5	1.9	3.2	3.1	2.3	2.0	2.0
C33-34	* Lung, Trachea		78.6	77.4	69.8	68.3	59.3	67.5	63.2	56.3	52.0	48.4
C38.4, C45.0	Pleura		0.8	1.4	1.8	0.6	1.0	2.1	2.4	2.2	1.8	2.0
C40-41	Bones, Joints, Cartilage		1.3	0.5	0.7	0.2	0.6	0.5	0.6	0.5	0.6	0.5
C47, C49	Soft Tissues		1.1	0.6	1.5	0.8	1.0	1.1	0.9	1.1	1.0	1.3
C43	* Skin Melanoma		4.0	3.0	3.4	3.4	5.8	3.3	3.7	3.6	3.6	3.2
C50	Breast		0.2	1.4	0.5	0.0	0.0	0.3	0.3	0.3	0.2	0.2
C53	Cervix Uteri		-	-	-	-	-	-	-	-	-	-
C54-55	Corpus Uteri		-	-	-	-	-	-	-	-	-	-
C56	Ovary		-	-	-	-	-	-	-	-	-	-
C61	* Prostate		26.5	30.1	36.0	26.7	31.6	31.7	32.1	32.7	31.4	28.9
C62	* Testis		0.9	0.5	0.2	0.0	0.3	0.8	0.6	0.4	0.5	0.3
C67	* Bladder		6.7	7.9	7.5	7.4	5.9	9.2	9.3	8.3	7.6	6.9
C64-66, C68	Kidney & Urinary Organs		6.1	8.0	5.2	5.8	5.9	7.6	7.4	6.6	5.8	5.7
C70-72	* Brain & Central Nerves		5.0	5.0	8.5	5.7	4.5	6.3	5.8	6.0	6.2	6.0
C73	* Thyroid		1.8	1.9	0.8	0.6	0.4	1.0	0.8	0.7	0.6	0.5
C82-88	Non Hodgkin Lymphoma		7.4	6.5	6.6	6.2	6.2	6.8	7.2	7.7	6.8	7.0
C81	Hodgkin's Disease		1.9	0.9	0.4	0.2	0.3	1.6	1.2	0.7	0.4	0.3
C90	Multiple Myeloma		6.0	3.8	5.9	4.0	3.0	3.7	4.4	3.8	3.4	3.8
C91-95	Leukaemia		6.9	7.1	9.6	7.6	5.3	8.6	8.4	7.8	6.4	6.5
...	Others		20.0	19.6	20.1	21.8	19.7	15.0	13.8	16.1	18.2	16.4
C00-97	* All malignant Cancers		285.3	283.1	273.5	255.4	231.9	252.5	244.4	229.3	216.1	203.2

* Cancers for which the numbers of deaths are corrected before 1995

ICD10	Female		Fribourg					Whole Switzerland				
	Site		1985-88	1989-92	1993-96	1997-00	2001-03	1985-88	1989-92	1993-96	1997-00	2001-03
C00-14	* Oral Cavity & Pharynx		1.3	0.6	1.2	2.3	1.9	1.5	1.6	1.6	1.6	1.9
C15	Oesophagus		2.7	3.0	2.9	2.6	2.2	1.5	1.7	1.6	1.7	1.7
C16	* Stomach		8.1	6.2	5.6	5.2	2.6	7.9	6.3	5.1	4.3	3.5
C18-21	* Colon, Rectum		21.1	13.9	16.6	15.9	17.0	17.1	15.7	14.5	12.8	12.7
C22	Liver & Intrahepatic Bile Ducts		1.8	3.4	3.2	2.5	4.8	2.1	2.2	2.4	2.5	2.7
C23-24	Gallbladder & Extrahepatic Bile Tract		4.3	4.2	2.3	3.0	1.8	3.6	3.4	2.9	2.3	2.0
C25	* Pancreas		8.7	10.7	8.6	7.8	5.7	7.9	8.0	7.5	7.9	7.6
C32	* Larynx		0.1	0.3	0.2	0.0	0.3	0.2	0.3	0.2	0.2	0.3
C33-34	* Lung, Trachea		7.7	9.0	12.0	17.6	15.4	9.4	10.8	13.1	14.4	15.6
C38.4, C45.0	Pleura		0.4	0.3	0.6	0.3	0.0	0.4	0.5	0.4	0.3	0.3
C40-41	Bones, Joints, Cartilage		0.3	0.0	0.2	0.4	0.0	0.4	0.3	0.3	0.4	0.3
C47, C49	Soft Tissues		1.2	0.7	1.3	0.3	0.7	0.9	0.7	0.8	0.9	0.9
C43	* Skin Melanoma		2.6	2.2	2.3	2.4	2.0	2.4	2.4	2.0	2.0	2.0
C50	* Breast		31.7	32.4	31.2	31.7	27.1	34.3	32.6	31.1	26.8	25.6
C53	* Cervix Uteri		7.0	2.7	2.0	2.1	1.1	4.1	3.4	3.0	1.9	1.6
C54-55	* Corpus Uteri		4.7	3.8	4.9	3.4	2.6	5.2	5.0	4.1	3.5	3.3
C56	* Ovary		7.8	11.6	10.4	9.2	11.1	10.1	9.7	8.5	7.8	7.7
C61	Prostate		-	-	-	-	-	-	-	-	-	-
C62	Testis		-	-	-	-	-	-	-	-	-	-
C67	* Bladder		2.1	2.0	2.7	1.6	1.9	2.5	2.5	2.4	2.1	2.1
C64-66, C68	Kidney & Urinary Organs		4.3	2.6	3.5	2.1	2.8	3.7	3.4	3.0	2.9	2.4
C70-72	* Brain & Central Nerves		4.8	3.1	5.0	5.1	3.3	3.7	4.1	4.0	3.9	3.9
C73	* Thyroid		0.6	1.0	1.0	0.6	0.7	1.2	1.1	0.8	0.7	0.8
C82-88	Non Hodgkin Lymphoma		4.8	5.0	4.7	4.9	3.5	4.0	4.6	4.7	4.9	4.1
C81	Hodgkin's Disease		0.7	0.7	0.0	0.3	0.4	0.9	0.7	0.4	0.3	0.3
C90	Multiple Myeloma		2.3	2.2	2.4	2.4	3.2	2.7	2.6	2.8	2.6	2.3
C91-95	Leukaemia		7.5	4.8	2.9	3.9	3.3	5.0	4.8	4.1	4.0	4.0
...	Others		12.4	13.5	12.1	13.4	8.9	10.2	9.8	10.3	11.7	10.5
C00-97	* All malignant Cancers		151.2	140.1	140.0	140.9	124.5	142.9	138.0	131.8	124.3	120.0

* Cancers for which the numbers of deaths are corrected before 1995

Age standardised rates, world population, per 100'000

ICD10	Male		Fribourg					Whole Switzerland				
	Site		1985-88	1989-92	1993-96	1997-00	2001-03	1985-88	1989-92	1993-96	1997-00	2001-03
C00-14	* Oral Cavity & Pharynx		10.2	9.9	6.6	10.6	8.0	6.0	6.0	5.0	5.2	4.6
C15	Oesophagus		10.8	8.9	9.7	8.5	9.1	5.6	5.4	5.1	4.9	5.0
C16	* Stomach		12.6	12.2	8.5	5.4	7.6	10.1	8.9	7.1	5.9	5.3
C18-21	* Colon, Rectum		18.3	18.9	17.3	20.3	11.7	17.2	16.3	15.4	14.1	12.5
C22	Liver & Intrahepatic Bile Ducts		3.0	7.1	8.8	7.7	7.0	5.0	5.4	5.7	5.8	6.0
C23-24	Gallbladder & Extrahepatic Bile Tract		2.2	1.3	1.0	1.5	0.7	1.5	1.5	1.3	1.2	0.9
C25	* Pancreas		11.0	9.0	7.8	7.0	7.8	7.4	7.7	7.2	6.8	7.1
C32	* Larynx		3.2	3.0	2.3	1.6	1.2	2.2	2.1	1.6	1.4	1.4
C33-34	* Lung, Trachea		53.5	53.0	48.2	46.0	39.9	45.6	42.6	37.8	34.6	32.1
C38.4, C45.0	Pleura		0.6	0.9	1.3	0.4	0.7	1.4	1.6	1.5	1.2	1.3
C40-41	Bones, Joints, Cartilage		1.4	0.5	0.6	0.1	0.4	0.5	0.5	0.4	0.5	0.4
C47, C49	Soft Tissues		1.0	0.4	1.1	0.5	0.6	0.8	0.7	0.8	0.7	0.9
C43	* Skin Melanoma		2.9	1.9	2.2	2.5	4.1	2.4	2.6	2.5	2.5	2.1
C50	Breast		0.1	0.9	0.3	0.0	0.0	0.1	0.2	0.2	0.2	0.1
C53	Cervix Uteri		-	-	-	-	-	-	-	-	-	-
C54-55	Corpus Uteri		-	-	-	-	-	-	-	-	-	-
C56	Ovary		-	-	-	-	-	-	-	-	-	-
C61	* Prostate		15.3	17.1	21.1	14.9	17.7	18.3	18.3	18.7	17.9	16.4
C62	* Testis		0.9	0.5	0.1	0.0	0.2	0.7	0.5	0.4	0.4	0.3
C67	* Bladder		4.2	4.6	4.5	4.6	3.4	5.7	5.6	5.1	4.6	4.1
C64-66, C68	Kidney & Urinary Organs		4.1	5.3	3.5	3.7	3.7	5.1	4.8	4.3	3.8	3.8
C70-72	* Brain & Central Nerves		4.2	4.0	6.3	3.9	3.2	4.9	4.5	4.6	4.6	4.5
C73	* Thyroid		1.2	1.3	0.6	0.4	0.2	0.6	0.5	0.5	0.4	0.3
C82-88	Non Hodgkin Lymphoma		5.0	4.1	4.2	3.8	4.1	4.6	4.8	5.0	4.5	4.6
C81	Hodgkin's Disease		1.4	0.7	0.3	0.2	0.2	1.2	0.9	0.5	0.3	0.2
C90	Multiple Myeloma		3.7	2.4	3.7	2.4	2.0	2.4	2.7	2.4	2.1	2.4
C91-95	Leukaemia		4.6	4.9	6.3	4.9	4.3	6.0	5.8	5.4	4.3	4.4
...	Others		12.3	12.5	12.8	13.9	12.9	9.6	8.8	10.2	11.6	10.3
C00-97	* All malignant Cancers		187.5	185.3	178.9	164.5	150.7	164.8	158.6	148.5	139.3	131.0

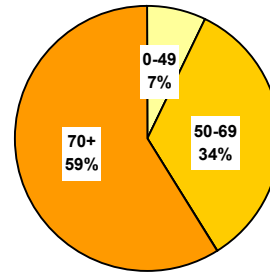
* Cancers for which the numbers of deaths are corrected before 1995

ICD10	Female		Fribourg					Whole Switzerland				
	Site		1985-88	1989-92	1993-96	1997-00	2001-03	1985-88	1989-92	1993-96	1997-00	2001-03
C00-14	* Oral Cavity & Pharynx		0.9	0.3	0.7	1.5	1.3	1.0	1.1	1.1	1.1	1.3
C15	Oesophagus		1.9	1.8	1.9	1.7	1.4	1.0	1.1	1.0	1.1	1.1
C16	* Stomach		5.0	4.0	3.4	3.4	1.7	4.8	3.9	3.2	2.7	2.2
C18-21	* Colon, Rectum		13.6	8.1	10.3	10.1	10.7	10.7	9.9	9.2	8.1	8.0
C22	Liver & Intrahepatic Bile Ducts		1.1	2.3	2.1	1.6	3.2	1.4	1.4	1.5	1.6	1.7
C23-24	Gallbladder & Extrahepatic Bile Tract		3.0	2.7	1.2	2.0	1.1	2.3	2.1	1.8	1.5	1.2
C25	* Pancreas		5.6	6.6	5.7	4.9	3.4	5.1	5.1	4.8	5.0	4.9
C32	* Larynx		0.1	0.2	0.1	0.0	0.1	0.2	0.2	0.1	0.1	0.2
C33-34	* Lung, Trachea		5.5	6.3	8.5	12.6	11.0	6.6	7.5	9.1	9.9	10.8
C38.4, C45.0	Pleura		0.3	0.2	0.5	0.2	0.0	0.3	0.3	0.3	0.2	0.2
C40-41	Bones, Joints, Cartilage		0.3	0.0	0.2	0.2	0.0	0.4	0.2	0.3	0.3	0.3
C47, C49	Soft Tissues		1.0	0.6	0.9	0.2	0.4	0.6	0.5	0.6	0.7	0.6
C43	* Skin Melanoma		1.8	1.4	1.6	1.6	1.4	1.7	1.8	1.4	1.4	1.4
C50	* Breast		22.1	22.3	21.6	21.7	18.7	23.6	22.4	21.5	18.4	17.6
C53	* Cervix Uteri		5.1	2.0	1.3	1.4	0.7	2.9	2.4	2.1	1.4	1.1
C54-55	* Corpus Uteri		3.0	2.5	3.1	2.2	1.5	3.3	3.2	2.6	2.3	2.1
C56	* Ovary		5.3	7.9	7.0	6.5	7.4	6.9	6.6	5.7	5.3	5.2
C61	Prostate		-	-	-	-	-	-	-	-	-	-
C62	Testis		-	-	-	-	-	-	-	-	-	-
C67	* Bladder		1.3	1.2	1.7	0.9	1.1	1.5	1.5	1.5	1.3	1.3
C64-66, C68	Kidney & Urinary Organs		2.8	1.7	2.4	1.5	1.9	2.5	2.3	2.0	1.9	1.6
C70-72	* Brain & Central Nerves		3.8	2.4	3.9	4.0	2.9	2.9	3.3	3.0	2.9	3.0
C73	* Thyroid		0.5	0.5	0.6	0.4	0.4	0.7	0.6	0.5	0.4	0.5
C82-88	Non Hodgkin Lymphoma		3.0	3.4	3.1	3.1	2.3	2.7	3.0	3.1	3.2	2.7
C81	Hodgkin's Disease		0.6	0.6	0.0	0.2	0.2	0.7	0.5	0.3	0.2	0.2
C90	Multiple Myeloma		1.6	1.4	1.5	1.4	2.1	1.7	1.7	1.8	1.7	1.5
C91-95	Leukaemia		5.2	3.3	2.0	2.4	2.9	3.6	3.5	2.9	2.8	2.8
...	Others		7.7	8.6	7.8	8.8	5.3	6.5	6.3	6.6	7.5	6.7
C00-97	* All malignant Cancers		102.1	92.4	93.2	94.5	83.2	95.7	92.4	88.2	82.9	80.2

* Cancers for which the numbers of deaths are corrected before 1995

Number of deaths - three last periods

Sex	Period	Age group			Total	Yearly average
		0-49	50-69	70+		
Male	1993-96	67	431	652	1'150	287
	1997-00	70	403	679	1'152	288
	2001-03	47	320	488	855	285
Female	1993-96	67	223	485	775	194
	1997-00	82	259	477	818	205
	2001-03	53	175	379	607	202
Total	Total	386	1'810	3'160	5'356	487

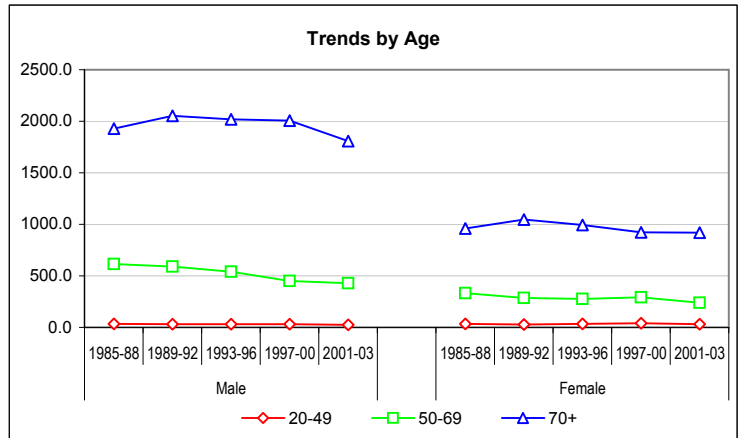


Crude rates by age-group & mean annual trends

*, **: Significant variations cf. Mantel-Haenszel test (95%, 99%)
Signification of mean annual trends not computed

Sex	Period	0-19	20-49	50-69	70+
Male	1985-88	7.13	35.50	614.72	1928.43
	1989-92	5.27	30.99	588.95	2054.15
	1993-96	2.48	30.37	539.32	2018.86
	1997-00	1.58	32.04	448.86 *	2007.75
	2001-03	5.27	25.67	428.81	1808.48 *
Female	1985-88	4.65	34.44	331.32	960.77
	1989-92	3.70	26.68	285.02	1045.95
	1993-96	0.87	32.84	275.96	992.26
	1997-00	0.00	39.92	291.36	921.72
	2001-03	3.30	31.12	239.31 *	919.95
Male	Annual trend		0.978	0.967	0.985
Female	Annual trend		0.995	0.982	0.989

(3 last periods)

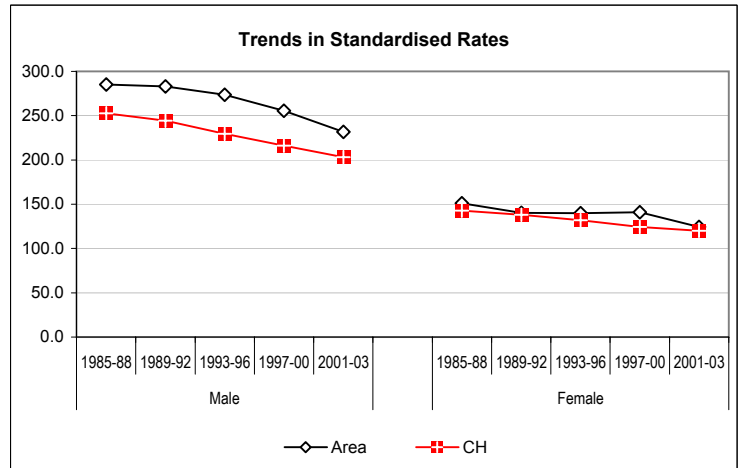


European standardized rate by period

Sex	Period	Area	CH	C.I. 95% of Area	
Male	1985-88	285.29	252.50	268.1	303.3
	1989-92	283.07	244.41	266.5	300.4
	1993-96	273.50	229.35	257.7	290.0
	1997-00	255.45	216.11	240.8	270.8
	2001-03	231.86	203.15	216.4	248.1
Female	1985-88	151.19	142.89	139.7	163.3
	1989-92	140.14	138.02	129.6	151.2
	1993-96	139.99	131.80	129.7	150.9
	1997-00	140.90	124.29	129.7	150.9
	2001-03	124.50	119.99	130.8	151.5
Male	Annual trend	0.977	0.983		
Female	Annual trend	0.984	0.987		

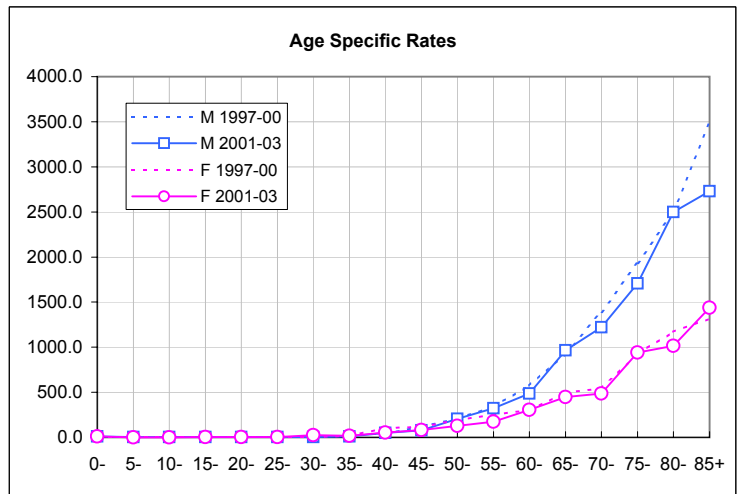
(3 last periods)

Area Fribourg
CH Whole Switzerland



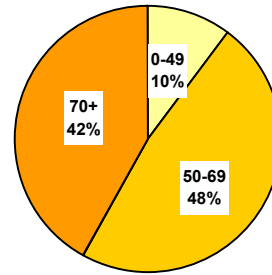
Age specific rates - last periods compared

Age	M		F	
	1997-00	2001-03	1997-00	2001-03
0-	3.1	9.0	0.0	9.5
5-	0.0	4.0	0.0	0.0
10-	0.0	4.0	0.0	0.0
15-	3.3	4.4	0.0	4.5
20-	0.0	4.5	3.5	4.6
25-	3.0	4.2	5.9	4.1
30-	10.0	3.5	5.0	23.9
35-	19.7	12.3	18.0	18.7
40-	44.3	49.5	101.7	52.0
45-	118.4	76.7	118.0	82.0
50-	207.8	206.8	192.8	128.0
55-	341.4	321.5	251.8	172.4
60-	573.6	487.1	300.9	305.3
65-	930.1	963.9	496.1	447.1
70-	1391.9	1220.0	543.1	487.9
75-	1934.6	1708.2	928.9	941.9
80-	2498.0	2498.1	1171.7	1014.6
85+	3493.6	2729.3	1316.8	1438.2
Crude rate	249.1	237.4	175.3	165.9



Number of deaths - three last periods

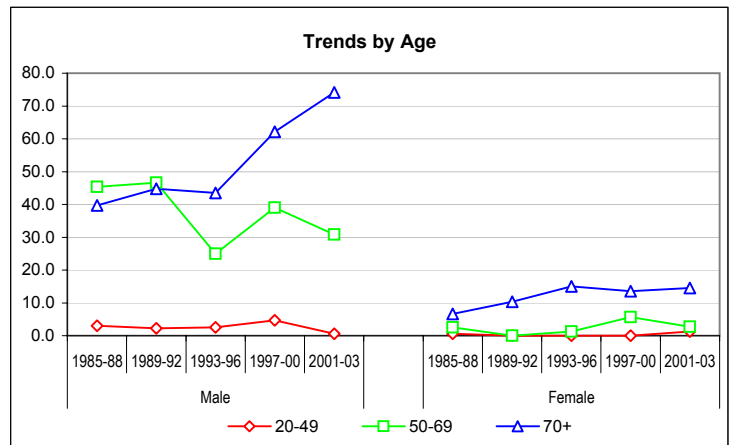
Sex	Period	Age group			Total	Yearly average
		0-49	50-69	70+		
Male	1993-96	5	20	14	39	10
	1997-00	10	35	21	66	17
	2001-03	1	23	20	44	15
Female	1993-96	0	1	7	8	2
	1997-00	0	5	7	12	3
	2001-03	2	2	6	10	3
Total	Total	18	86	75	180	16



Crude rates by age-group & mean annual trends

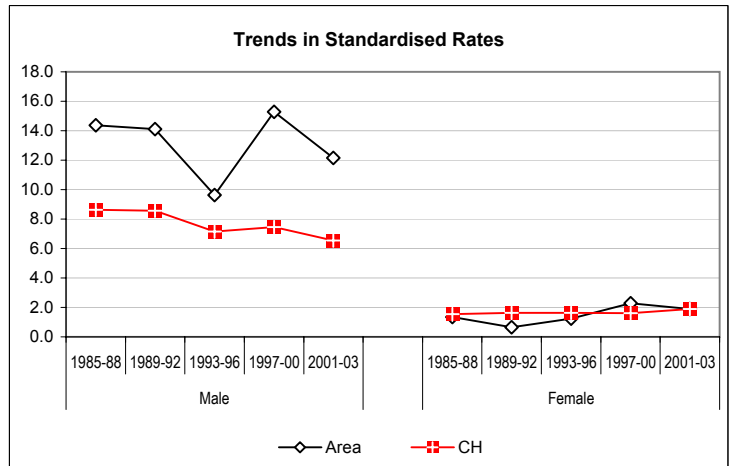
* **: Significant variations cf. Mantel-Haenszel test (95%, 99%)
Signification of mean annual trends not computed

Sex	Period	0-19	20-49	50-69	70+
Male	1985-88	0.00	2.98	45.38	39.74
	1989-92	0.00	2.24	46.59	44.74
	1993-96	0.00	2.58	24.99 *	43.48
	1997-00	0.00	4.71	38.98	62.10
	2001-03	0.00	0.61 *	30.82	74.12
	Annual trend (3 last periods)			0.830	1.035
Female	1985-88	0.00	0.57	2.56	6.64
	1989-92	0.00	0.00	0.00	10.33
	1993-96	0.00	0.00	1.24	14.99
	1997-00	0.00	0.00	5.63	13.53
	2001-03	0.00	1.25	2.74	14.57
	Annual trend (3 last periods)			2.880	1.136



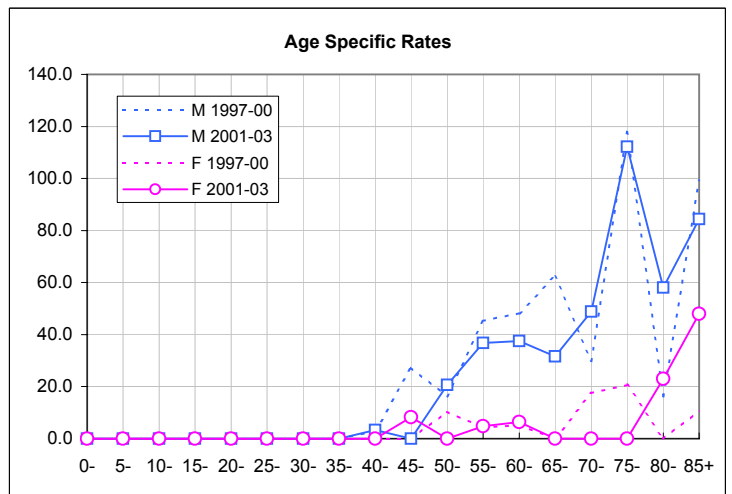
European standardized rate by period

Sex	Period	Area	CH	C.I. 95% of Area	
Male	1985-88	14.36	8.62	10.6	19.1
	1989-92	14.12	8.57	10.5	18.6
	1993-96	9.62	7.15	6.8	13.2
	1997-00	15.27	7.45	11.8	19.5
	2001-03	12.15	6.55	8.8	16.4
Female	1985-88	1.35	1.55	0.4	3.1
	1989-92	0.64	1.62	0.2	1.6
	1993-96	1.25	1.63	0.5	2.5
	1997-00	2.29	1.62	0.5	2.5
	2001-03	1.89	1.89	1.1	4.1
Male Annual trend (3 last periods)		1.039	0.989		
Female Annual trend (3 last periods)		1.067	1.021		
Area	Fribourg				
CH	Whole Switzerland				



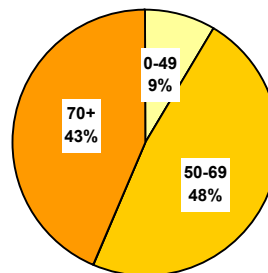
Age specific rates - last periods compared

Age	M		F	
	1997-00	2001-03	1997-00	2001-03
0-	0.0	0.0	0.0	0.0
5-	0.0	0.0	0.0	0.0
10-	0.0	0.0	0.0	0.0
15-	0.0	0.0	0.0	0.0
20-	0.0	0.0	0.0	0.0
25-	0.0	0.0	0.0	0.0
30-	0.0	0.0	0.0	0.0
35-	0.0	0.0	0.0	0.0
40-	2.8	3.3	0.0	0.0
45-	27.3	0.0	0.0	8.2
50-	16.2	20.7	10.3	0.0
55-	45.2	36.7	4.3	4.8
60-	48.2	37.5	5.2	6.4
65-	62.4	31.6	0.0	0.0
70-	29.8	48.8	17.5	0.0
75-	117.8	112.2	20.6	0.0
80-	16.2	58.1	0.0	23.1
85+	99.1	84.4	10.7	47.9
Crude rate	14.3	12.2	2.6	2.7



Number of deaths - three last periods

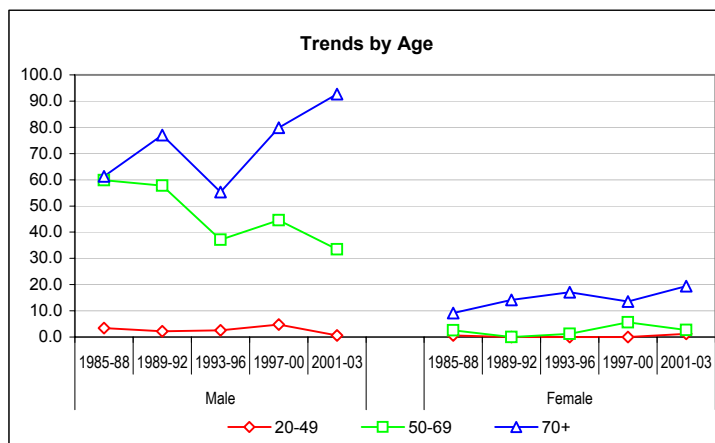
Sex	Period	Age group			Total	Yearly average
		0-49	50-69	70+		
Male	1993-96	5	30	18	53	13
	1997-00	10	40	27	77	19
	2001-03	1	25	25	51	17
Female	1993-96	0	1	8	9	2
	1997-00	0	5	7	12	3
	2001-03	2	2	8	12	4
Total	Total	18	103	93	214	19



Crude rates by age-group & mean annual trends

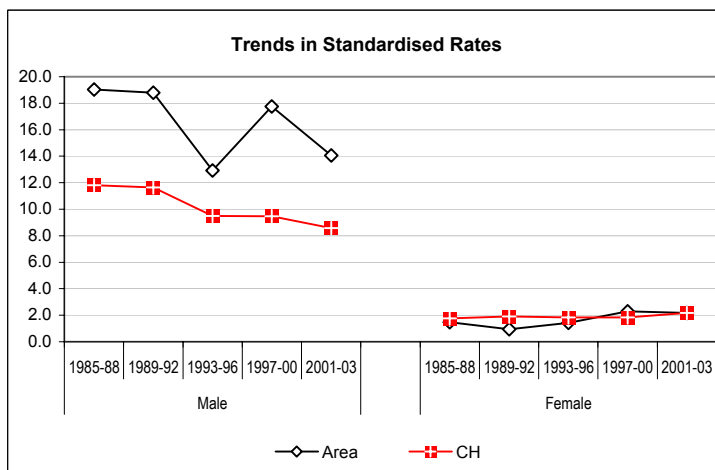
* **: Significant variations cf. Mantel-Haenszel test (95%, 99%)
Signification of mean annual trends not computed

Sex	Period	0-19	20-49	50-69	70+
Male	1985-88	0.00	3.47	59.83	61.27
	1989-92	0.00	2.24	57.77	77.05
	1993-96	0.00	2.58	37.18	55.28
	1997-00	0.00	4.71	44.55	79.84
	2001-03	0.00	0.61 *	33.50	92.65
Female	1985-88	0.00	0.57	2.56	9.11
	1989-92	0.00	0.00	0.00	14.12
	1993-96	0.00	0.00	1.24	17.04
	1997-00	0.00	0.00	5.63	13.53
	2001-03	0.00	1.25	2.74	19.42
Male	Annual trend		0.830	0.988	1.078
Female	Annual trend		2.880	1.136	1.015



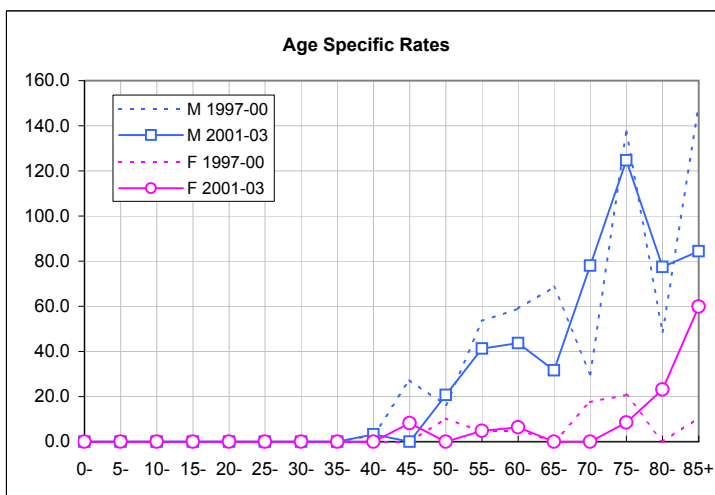
European standardized rate by period

Sex	Period	Area	CH	C.I. 95% of Area	
				Lower	Upper
Male	1985-88	19.04	11.82	14.7	24.3
	1989-92	18.79	11.63	14.6	23.8
	1993-96	12.92	9.50	9.6	17.0
	1997-00	17.76	9.47	14.0	22.2
	2001-03	14.06	8.57	10.4	18.5
Female	1985-88	1.47	1.77	0.5	3.2
	1989-92	0.94	1.91	0.3	2.0
	1993-96	1.42	1.84	0.6	2.8
	1997-00	2.29	1.83	0.6	2.8
	2001-03	2.18	2.16	1.1	4.1
Male	Annual trend	1.016	0.986		
Female	Annual trend	1.066	1.022		



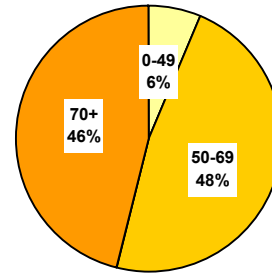
Age specific rates - last periods compared

Age	M		F	
	1997-00	2001-03	1997-00	2001-03
0-	0.0	0.0	0.0	0.0
5-	0.0	0.0	0.0	0.0
10-	0.0	0.0	0.0	0.0
15-	0.0	0.0	0.0	0.0
20-	0.0	0.0	0.0	0.0
25-	0.0	0.0	0.0	0.0
30-	0.0	0.0	0.0	0.0
35-	0.0	0.0	0.0	0.0
40-	2.8	3.3	0.0	0.0
45-	27.3	0.0	0.0	8.2
50-	16.2	20.7	10.3	0.0
55-	53.5	41.3	4.3	4.8
60-	59.0	43.7	5.2	6.4
65-	68.7	31.6	0.0	0.0
70-	29.8	78.1	17.5	0.0
75-	137.5	124.7	20.6	8.6
80-	48.7	77.5	0.0	23.1
85+	148.7	84.4	10.7	59.9
Crude rate	16.6	14.2	2.6	3.3



Number of deaths - three last periods

Sex	Period	Age group			Total	Yearly average
		0-49	50-69	70+		
Male	1993-96	5	29	24	58	15
	1997-00	1	29	25	55	14
	2001-03	4	25	21	50	17
Female	1993-96	2	5	9	16	4
	1997-00	1	5	11	17	4
	2001-03	0	5	5	10	3
Total	Total	13	98	95	206	19

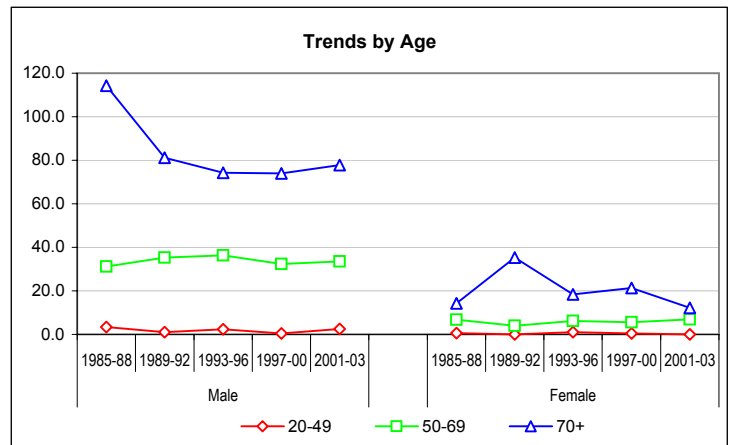


Crude rates by age-group & mean annual trends

*, **: Significant variations cf. Mantel-Haenszel test (95%, 99%)
Signification of mean annual trends not computed

Sex	Period	0-19	20-49	50-69	70+
Male	1985-88	0.00	3.35	31.14	114.21
	1989-92	0.00	1.01	35.36	81.11
	1993-96	0.00	2.36	36.33	74.32
	1997-00	0.00	0.47	32.30	73.93
	2001-03	0.00	2.45	33.50	77.83
Female	1985-88	0.00	0.60	6.74	14.23
	1989-92	0.00	0.00	3.93	35.29
	1993-96	0.00	0.99	6.20	18.43
	1997-00	0.00	0.49	5.63	21.26
	2001-03	0.00	0.00	6.84	12.14
Male	Annual trend		0.983	0.988	1.006
Female	Annual trend		0.366	1.012	0.947

(3 last periods)

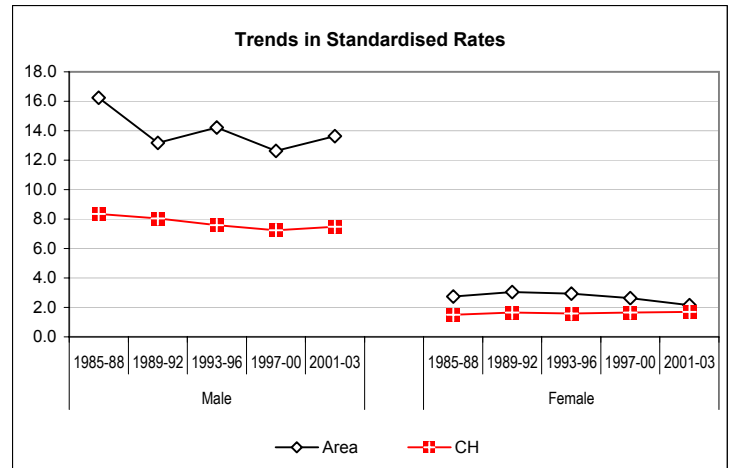


European standardized rate by period

Sex	Period	Area	CH	C.I. 95% of Area	
Male	1985-88	16.25	8.35	12.4	20.9
	1989-92	13.18	8.05	9.8	17.3
	1993-96	14.23	7.58	10.8	18.4
	1997-00	12.62	7.24	9.5	16.5
	2001-03	13.63	7.47	10.1	18.0
Female	1985-88	2.75	1.50	1.3	4.9
	1989-92	3.04	1.66	1.8	4.8
	1993-96	2.94	1.59	1.6	4.9
	1997-00	2.63	1.66	1.6	4.9
	2001-03	2.16	1.70	1.4	4.3
Male	Annual trend	0.993	0.997		
Female	Annual trend	0.958	1.010		

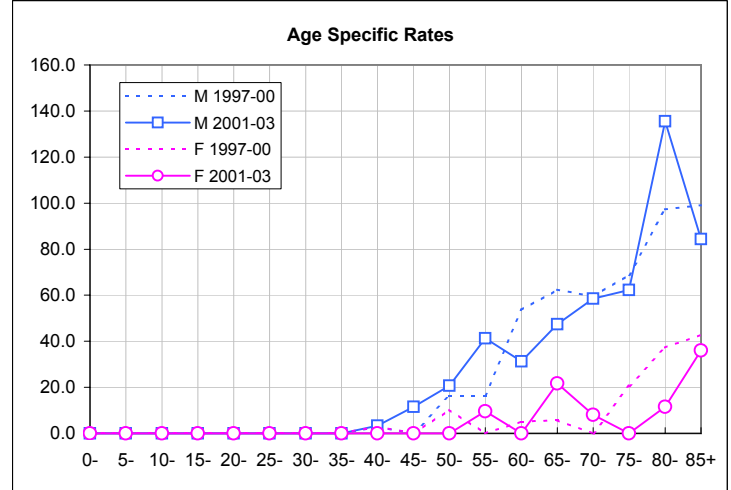
(3 last periods)

Area Fribourg
CH Whole Switzerland



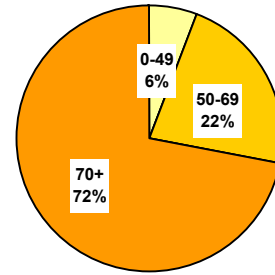
Age specific rates - last periods compared

Age	M		F	
	1997-00	2001-03	1997-00	2001-03
0-	0.0	0.0	0.0	0.0
5-	0.0	0.0	0.0	0.0
10-	0.0	0.0	0.0	0.0
15-	0.0	0.0	0.0	0.0
20-	0.0	0.0	0.0	0.0
25-	0.0	0.0	0.0	0.0
30-	0.0	0.0	0.0	0.0
35-	0.0	0.0	0.0	0.0
40-	2.8	3.3	3.0	0.0
45-	0.0	11.5	0.0	0.0
50-	16.2	20.7	10.3	0.0
55-	16.5	41.3	0.0	9.6
60-	53.6	31.2	5.2	0.0
65-	62.4	47.4	5.7	21.6
70-	59.5	58.6	0.0	8.0
75-	68.7	62.3	20.6	0.0
80-	97.3	135.6	37.2	11.5
85+	99.1	84.4	42.8	36.0
Crude rate	11.9	13.9	3.6	2.7



Number of deaths - three last periods

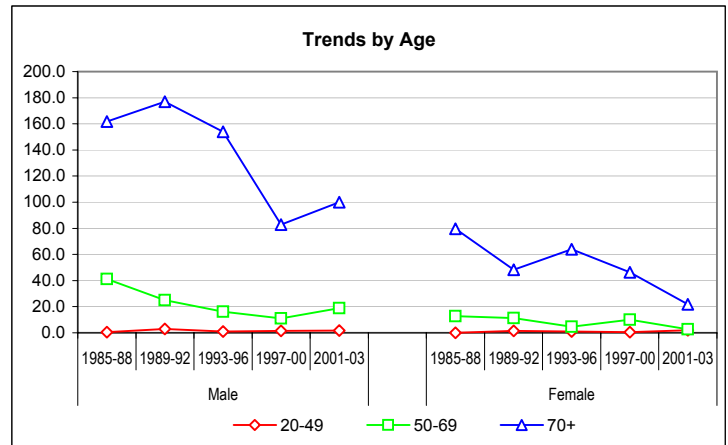
Sex	Period	Age group			Total	Yearly average
		0-49	50-69	70+		
Male	1993-96	2	13	50	65	16
	1997-00	3	10	28	41	10
	2001-03	3	14	27	44	15
Female	1993-96	2	4	31	37	9
	1997-00	1	9	24	34	9
	2001-03	3	2	9	14	5
Total	Total	14	52	169	235	21



Crude rates by age-group & mean annual trends

*, **: Significant variations cf. Mantel-Haenszel test (95%, 99%)
Signification of mean annual trends not computed

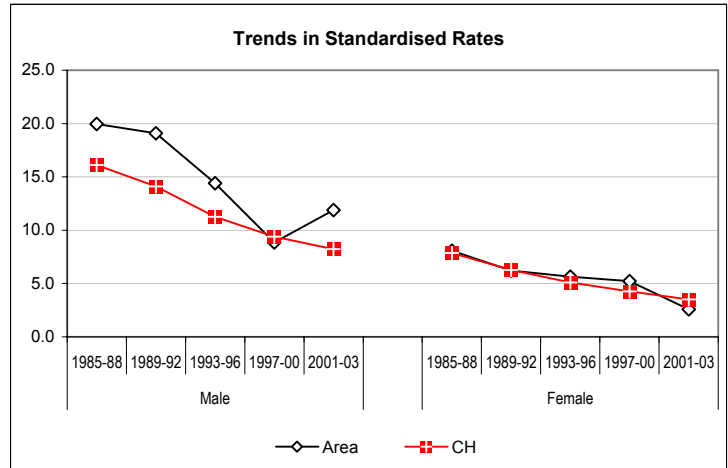
Sex	Period	0-19	20-49	50-69	70+
Male	1985-88	0.00	0.55	41.15	161.83
	1989-92	0.00	2.98	24.97	177.04
	1993-96	0.00	0.94	16.08	154.03
	1997-00	0.00	1.41	11.14	82.80 **
	2001-03	0.00	1.84	18.76	100.06
Female	1985-88	0.00	0.00	12.70	79.74
	1989-92	0.00	1.55	11.24	48.24 *
	1993-96	0.00	0.96	4.66	64.04
	1997-00	0.00	0.49	10.13	46.38 *
	2001-03	0.00	1.87	2.74	21.85 *
Male	Annual trend		1.101	1.016	0.935
Female	Annual trend		1.084	0.940	0.861



European standardized rate by period

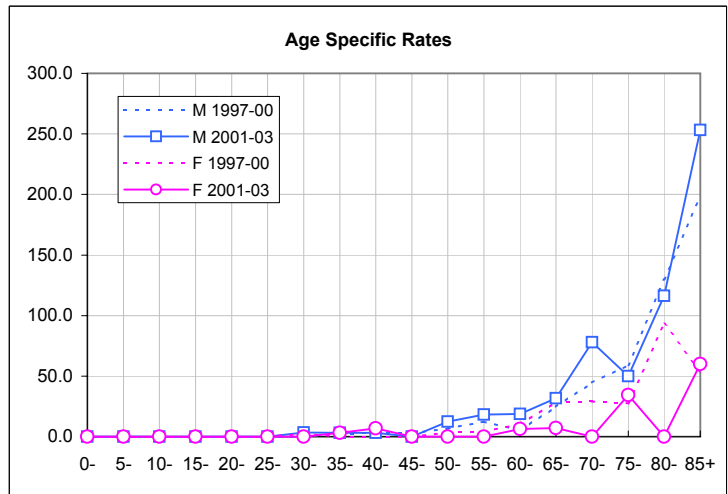
Sex	Period	Area	CH	C.I. 95% of Area	
Male	1985-88	19.96	16.11	15.7	25.1
	1989-92	19.08	14.09	15.0	23.9
	1993-96	14.39	11.25	11.0	18.4
	1997-00	8.84	9.39	6.3	12.0
	2001-03	11.90	8.24	8.6	16.0
Female	1985-88	8.08	7.87	5.8	11.0
	1989-92	6.23	6.26	4.2	8.9
	1993-96	5.63	5.10	3.9	7.9
	1997-00	5.23	4.27	3.9	7.9
	2001-03	2.59	3.52	3.5	7.5
Male	Annual trend	0.968	0.956		
Female	Annual trend	0.900	0.949		

Area Fribourg
CH Whole Switzerland



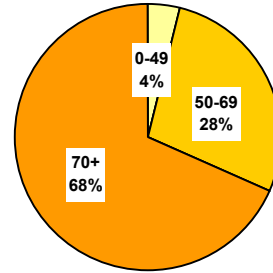
Age specific rates - last periods compared

Age	M		F	
	1997-00	2001-03	1997-00	2001-03
0-	0.0	0.0	0.0	0.0
5-	0.0	0.0	0.0	0.0
10-	0.0	0.0	0.0	0.0
15-	0.0	0.0	0.0	0.0
20-	0.0	0.0	0.0	0.0
25-	0.0	0.0	0.0	0.0
30-	0.0	3.5	2.5	0.0
35-	2.5	3.1	0.0	3.1
40-	2.8	3.3	0.0	6.9
45-	3.0	0.0	0.0	0.0
50-	6.5	12.4	3.4	0.0
55-	12.3	18.4	4.3	0.0
60-	5.4	18.7	10.4	6.4
65-	25.0	31.6	28.5	7.2
70-	44.7	78.1	29.2	0.0
75-	58.9	49.9	27.5	34.2
80-	129.8	116.2	93.0	0.0
85+	198.2	253.2	53.5	59.9
Crude rate	8.9	12.2	7.3	3.8



Number of deaths - three last periods

Sex	Period	Age group			Total	Yearly average
		0-49	50-69	70+		
Male	1993-96	6	38	75	118	30
	1997-00	6	43	98	147	37
	2001-03	3	28	36	67	22
Female	1993-96	2	21	83	106	27
	1997-00	4	26	69	99	25
	2001-03	3	19	71	93	31
Total	Total	24	175	432	631	57

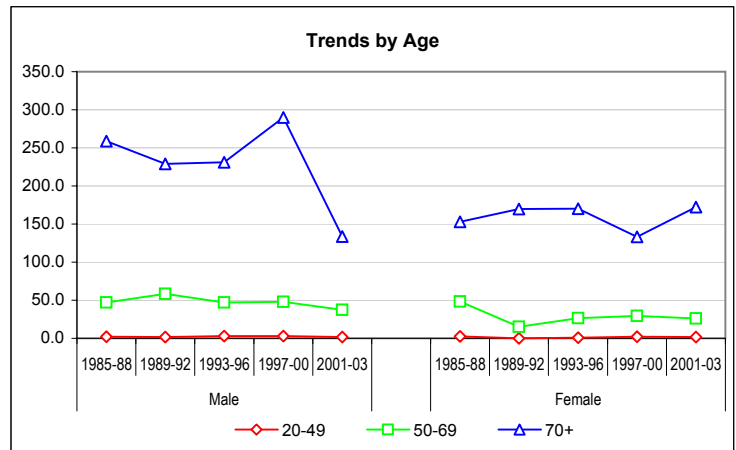


Crude rates by age-group & mean annual trends

*, **: Significant variations cf. Mantel-Haenszel test (95%, 99%)
Signification of mean annual trends not computed

Sex	Period	0-19	20-49	50-69	70+
Male	1985-88	0.00	2.20	47.07	258.62
	1989-92	0.88	1.48	58.51	228.97
	1993-96	0.00	2.82	47.09	231.07
	1997-00	0.00	2.83	47.89	289.78
	2001-03	0.00	1.84	37.52	133.42 **
Female	1985-88	0.00	2.31	48.15	153.09
	1989-92	0.00	0.00 *	15.19 **	169.63
	1993-96	0.00	0.96	26.65	170.03
	1997-00	0.00	1.95	29.25	133.33
	2001-03	0.00	1.87	25.98	172.34
Male	Annual trend		0.944	0.970	0.931
Female	Annual trend		1.104	0.998	0.999

(3 last periods)

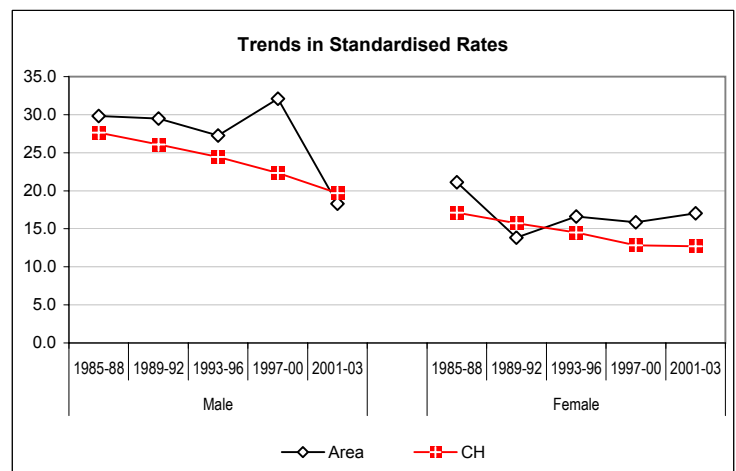


European standardized rate by period

Sex	Period	Area	CH	C.I. 95% of Area	
				Lower	Upper
Male	1985-88	29.84	27.65	24.4	36.0
	1989-92	29.50	26.08	24.3	35.5
	1993-96	27.26	24.46	22.5	32.7
	1997-00	32.09	22.32	27.1	37.8
	2001-03	18.29	19.67	14.1	23.3
Female	1985-88	21.10	17.14	17.1	25.8
	1989-92	13.86	15.73	11.0	17.2
	1993-96	16.62	14.52	13.4	20.3
	1997-00	15.88	12.83	13.4	20.3
	2001-03	17.03	12.68	12.7	19.6
Male	Annual trend	0.950	0.970		
Female	Annual trend	1.003	0.980		

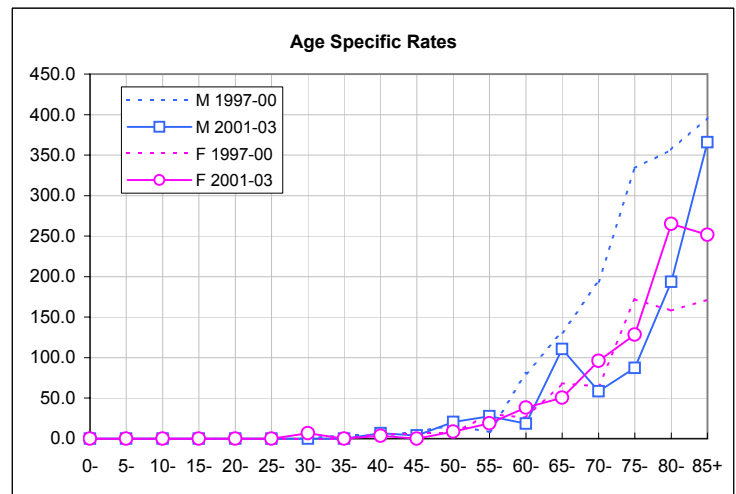
(3 last periods)

Area Fribourg
CH Whole Switzerland



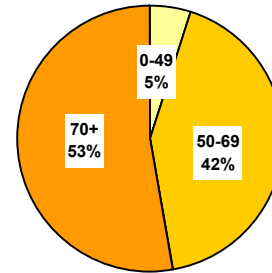
Age specific rates - last periods compared

Age	M		F	
	1997-00	2001-03	1997-00	2001-03
0-	0.0	0.0	0.0	0.0
5-	0.0	0.0	0.0	0.0
10-	0.0	0.0	0.0	0.0
15-	0.0	0.0	0.0	0.0
20-	0.0	0.0	0.0	0.0
25-	0.0	0.0	0.0	0.0
30-	0.0	0.0	0.0	6.8
35-	4.9	0.0	0.0	0.0
40-	2.8	6.6	6.0	3.5
45-	9.1	3.8	6.6	0.0
50-	16.2	20.7	6.9	8.8
55-	8.2	27.6	30.4	19.2
60-	80.4	18.7	25.9	38.2
65-	131.1	110.6	68.4	50.5
70-	193.5	58.6	64.2	96.0
75-	333.9	87.3	172.0	128.4
80-	356.9	193.6	158.1	265.2
85+	396.4	365.8	171.3	251.7
Crude rate	31.8	18.6	21.2	25.4



Number of deaths - three last periods

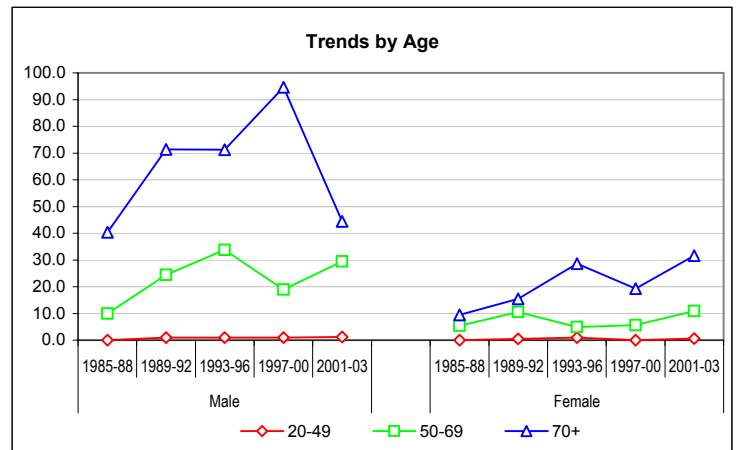
Sex	Period	Age group			Total	Yearly average
		0-49	50-69	70+		
Male	1993-96	2	27	23	52	13
	1997-00	3	17	32	52	13
	2001-03	2	22	12	36	12
Female	1993-96	2	4	14	20	5
	1997-00	0	5	10	15	4
	2001-03	1	8	13	22	7
Total	Total	10	83	104	197	18



Crude rates by age-group & mean annual trends

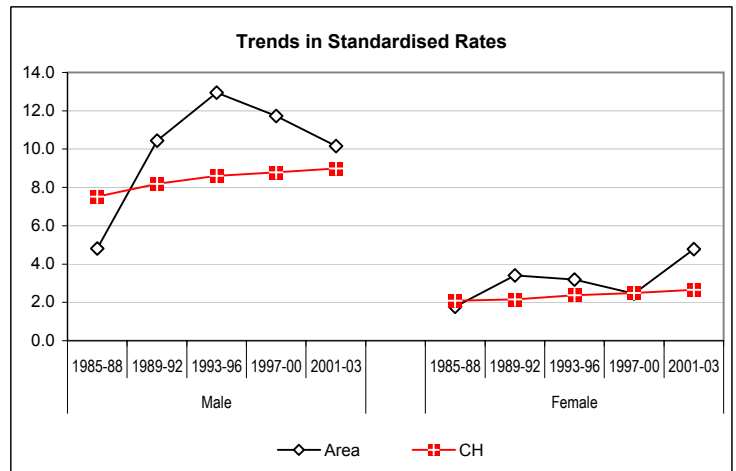
* **: Significant variations cf. Mantel-Haenszel test (95%, 99%)
Signification of mean annual trends not computed

Sex	Period	0-19	20-49	50-69	70+
Male	1985-88	0.00	0.00	9.91 *	40.31
	1989-92	0.00	1.01	24.48 *	71.38
	1993-96	0.00	0.95	33.82	71.22
	1997-00	0.79	0.94	18.94	94.63
	2001-03	0.00	1.22	29.48	44.48 *
Female	1985-88	0.00	0.00	5.39	9.49
	1989-92	0.00	0.54	10.48	15.44
	1993-96	0.00	0.99	4.96	28.66
	1997-00	0.00	0.00	5.63	19.33
	2001-03	0.00	0.62	10.94	31.56
Male	Annual trend (3 last periods)		1.035	0.974	0.942
Female	Annual trend (3 last periods)		0.847	1.115	1.008



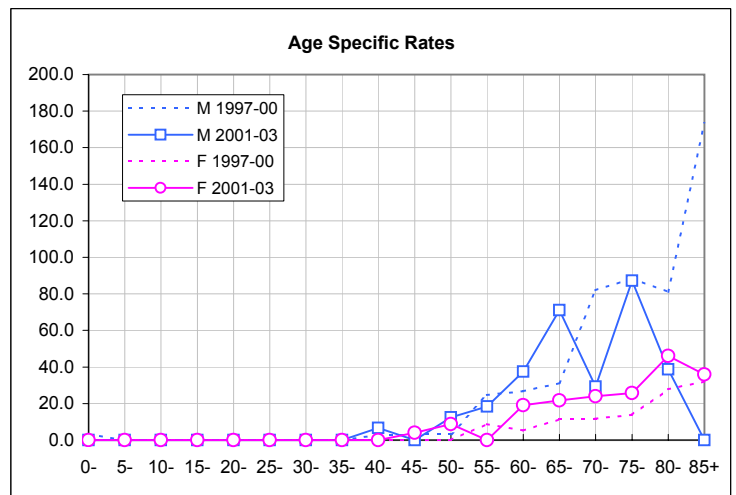
European standardized rate by period

Sex	Period	Area	CH	C.I. 95% of Area	
Male	1985-88	4.81	7.53	2.8	7.6
	1989-92	10.44	8.18	7.5	14.2
	1993-96	12.95	8.60	9.6	17.0
	1997-00	11.72	8.79	8.7	15.4
	2001-03	10.16	8.99	7.1	14.1
Female	1985-88	1.78	2.09	0.7	3.6
	1989-92	3.41	2.16	1.9	5.7
	1993-96	3.19	2.38	1.8	5.1
	1997-00	2.46	2.49	1.8	5.1
	2001-03	4.78	2.66	1.3	4.2
Male	Annual trend (3 last periods)	0.966	1.006		
Female	Annual trend (3 last periods)	1.052	1.016		
Area	Fribourg				
CH	Whole Switzerland				



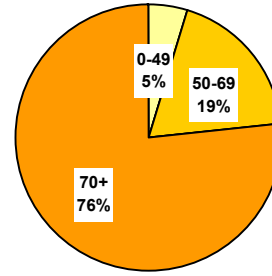
Age specific rates - last periods compared

Age	M		F	
	1997-00	2001-03	1997-00	2001-03
0-	3.1	0.0	0.0	0.0
5-	0.0	0.0	0.0	0.0
10-	0.0	0.0	0.0	0.0
15-	0.0	0.0	0.0	0.0
20-	0.0	0.0	0.0	0.0
25-	0.0	0.0	0.0	0.0
30-	0.0	0.0	0.0	0.0
35-	0.0	0.0	0.0	0.0
40-	2.8	6.6	0.0	0.0
45-	3.0	0.0	0.0	4.1
50-	3.2	12.4	0.0	8.8
55-	24.7	18.4	8.7	0.0
60-	26.8	37.5	5.2	19.1
65-	31.2	71.1	11.4	21.6
70-	81.9	29.3	11.7	24.0
75-	88.4	87.3	13.8	25.7
80-	81.1	38.7	27.9	46.1
85+	173.4	0.0	32.1	36.0
Crude rate	11.2	10.0	3.2	6.0



Number of deaths - three last periods

Sex	Period	Age group			Total	Yearly average
		0-49	50-69	70+		
Male	1993-96	0	2	5	7	2
	1997-00	1	4	4	9	2
	2001-03	0	0	4	4	1
Female	1993-96	0	0	17	17	4
	1997-00	1	4	12	17	4
	2001-03	1	2	7	10	3
Total	Total	3	12	49	64	6

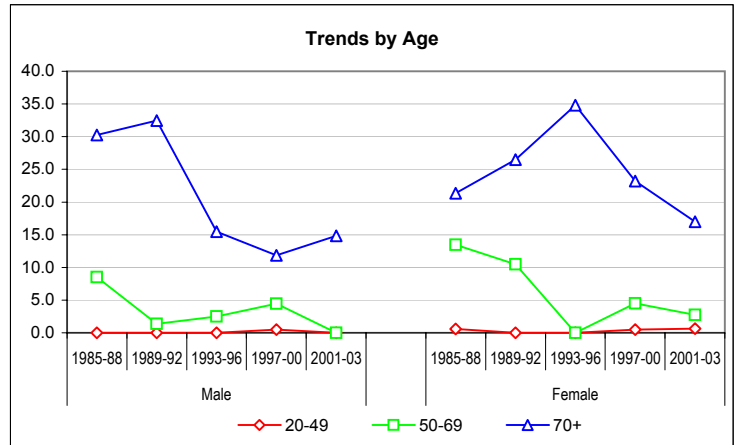


Crude rates by age-group & mean annual trends

*, **: Significant variations cf. Mantel-Haenszel test (95%, 99%)
Signification of mean annual trends not computed

Sex	Period	0-19	20-49	50-69	70+
Male	1985-88	0.00	0.00	8.49	30.23
	1989-92	0.00	0.00	1.36	32.45
	1993-96	0.00	0.00	2.51	15.49
	1997-00	0.00	0.47	4.46	11.83
	2001-03	0.00	0.00	0.00	14.83
Female	1985-88	0.00	0.60	13.47	21.35
	1989-92	0.00	0.00	10.48	26.47
	1993-96	0.00	0.00	0.00 **	34.81
	1997-00	0.00	0.49	4.50 *	23.19
	2001-03	0.00	0.62	2.74	16.99
Male	Annual trend		1.137	0.364	0.991
Female	Annual trend		2.879	3.162	0.903

(3 last periods)

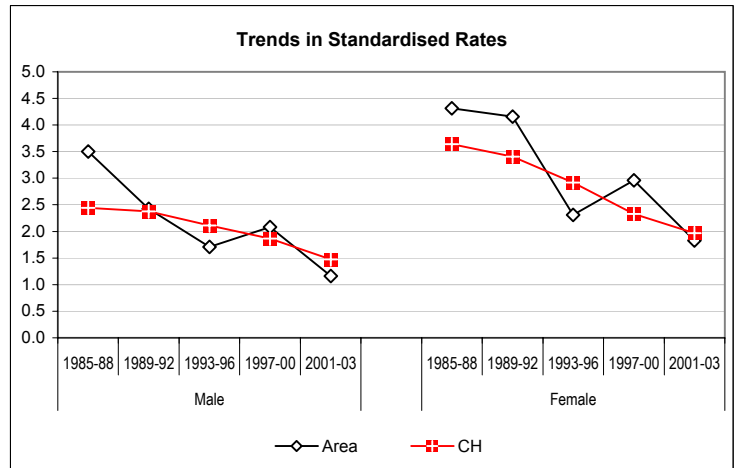


European standardized rate by period

Sex	Period	Area	CH	C.I. 95% of Area	
Male	1985-88	3.50	2.44	1.9	5.8
	1989-92	2.42	2.38	1.2	4.4
	1993-96	1.71	2.11	0.7	3.5
	1997-00	2.08	1.86	0.9	4.0
	2001-03	1.16	1.47	0.3	3.0
Female	1985-88	4.31	3.64	2.6	6.8
	1989-92	4.16	3.41	2.4	6.6
	1993-96	2.31	2.92	1.3	3.7
	1997-00	2.96	2.33	1.3	3.7
	2001-03	1.83	1.97	1.7	4.8
Male	Annual trend	0.952	0.951		
Female	Annual trend	0.972	0.945		

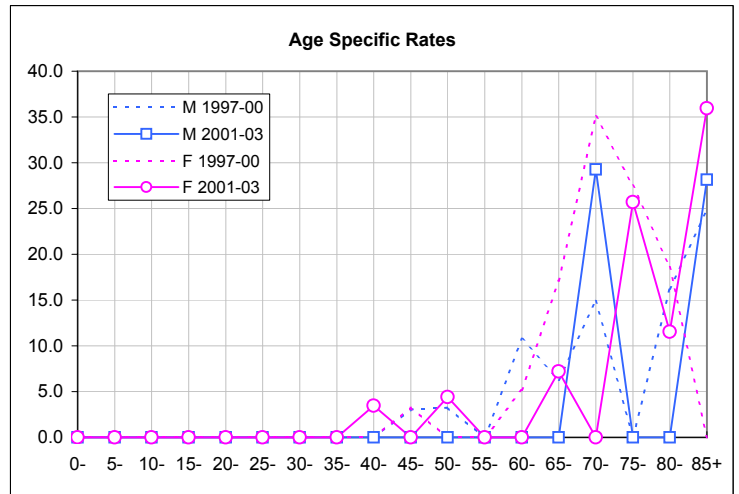
(3 last periods)

Area Fribourg
CH Whole Switzerland



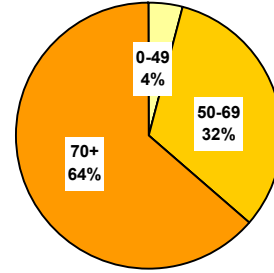
Age specific rates - last periods compared

Age	M		F	
	1997-00	2001-03	1997-00	2001-03
0-	0.0	0.0	0.0	0.0
5-	0.0	0.0	0.0	0.0
10-	0.0	0.0	0.0	0.0
15-	0.0	0.0	0.0	0.0
20-	0.0	0.0	0.0	0.0
25-	0.0	0.0	0.0	0.0
30-	0.0	0.0	0.0	0.0
35-	0.0	0.0	0.0	0.0
40-	0.0	0.0	0.0	3.5
45-	3.0	0.0	3.3	0.0
50-	3.2	0.0	0.0	4.4
55-	0.0	0.0	0.0	0.0
60-	10.7	0.0	5.2	0.0
65-	6.2	0.0	17.1	7.2
70-	14.9	29.3	35.0	0.0
75-	0.0	0.0	27.5	25.7
80-	16.2	0.0	18.6	11.5
85+	24.8	28.1	0.0	36.0
Crude rate	1.9	1.1	3.6	2.7



Number of deaths - three last periods

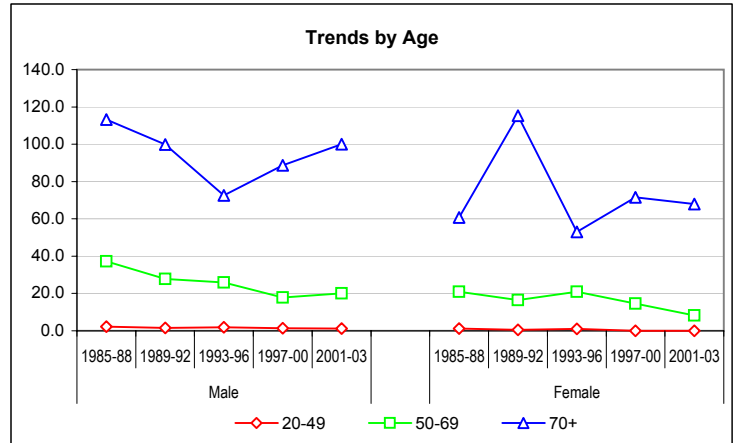
Sex	Period	Age group			Total	Yearly average
		0-49	50-69	70+		
Male	1993-96	4	21	23	48	12
	1997-00	3	16	30	49	12
	2001-03	2	15	27	44	15
Female	1993-96	2	17	26	45	11
	1997-00	0	13	37	50	13
	2001-03	0	6	28	34	11
Total	Total	11	88	171	270	25



Crude rates by age-group & mean annual trends

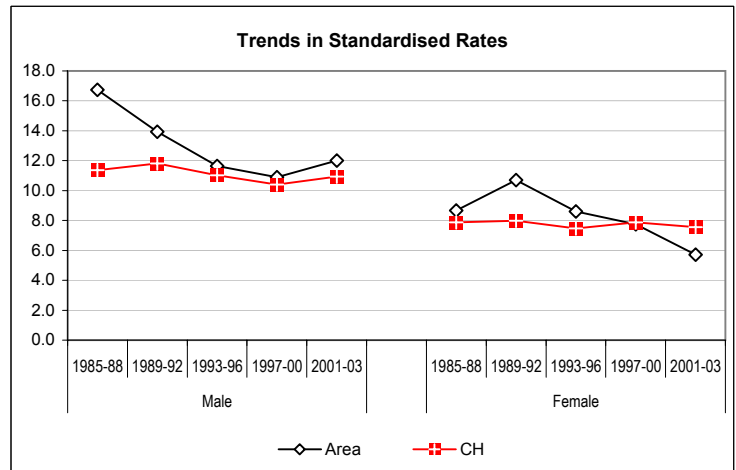
*, **: Significant variations cf. Mantel-Haenszel test (95%, 99%)
Signification of mean annual trends not computed

Sex	Period	0-19	20-49	50-69	70+
Male	1985-88	0.00	2.19	37.21	113.20
	1989-92	0.00	1.48	27.81	99.89
	1993-96	0.00	1.87	25.94	72.65
	1997-00	0.00	1.41	17.82	88.71
	2001-03	0.00	1.22	20.10	100.06
Female	1985-88	0.00	1.18	21.01	60.77
	1989-92	0.00	0.53	16.55	115.27 **
	1993-96	0.00	0.99	20.85	53.01 **
	1997-00	0.00	0.00	14.63	71.50
	2001-03	0.00	0.00	8.21	67.97
Male	Annual trend (3 last periods)		0.941	0.961	1.047
Female	Annual trend (3 last periods)		0.333	0.877	1.038



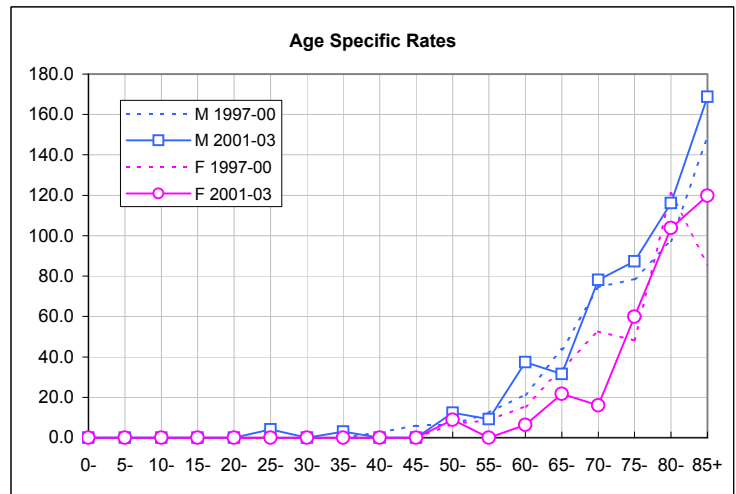
European standardized rate by period

Sex	Period	Area	CH	C.I. 95% of Area	
				Lower	Upper
Male	1985-88	16.73	11.37	12.8	21.5
	1989-92	13.93	11.81	10.4	18.3
	1993-96	11.64	11.02	8.6	15.5
	1997-00	10.90	10.39	8.0	14.5
	2001-03	12.01	10.93	8.7	16.2
Female	1985-88	8.66	7.87	6.2	11.8
	1989-92	10.70	7.98	8.1	13.8
	1993-96	8.60	7.47	6.1	11.7
	1997-00	7.76	7.87	6.1	11.7
	2001-03	5.72	7.56	5.6	10.4
Male	Annual trend (3 last periods)	1.003	0.998		
Female	Annual trend (3 last periods)	0.945	1.002		
Area	Fribourg				
CH	Whole Switzerland				



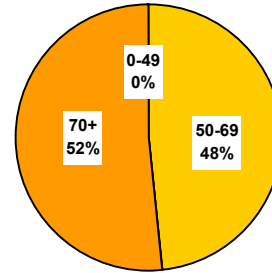
Age specific rates - last periods compared

Age	M		F	
	1997-00	2001-03	1997-00	2001-03
0-	0.0	0.0	0.0	0.0
5-	0.0	0.0	0.0	0.0
10-	0.0	0.0	0.0	0.0
15-	0.0	0.0	0.0	0.0
20-	0.0	0.0	0.0	0.0
25-	0.0	4.2	0.0	0.0
30-	0.0	0.0	0.0	0.0
35-	0.0	3.1	0.0	0.0
40-	2.8	0.0	0.0	0.0
45-	6.1	0.0	0.0	0.0
50-	6.5	12.4	6.9	8.8
55-	12.3	9.2	8.7	0.0
60-	21.4	37.5	15.6	6.4
65-	43.7	31.6	34.2	21.6
70-	74.4	78.1	52.6	16.0
75-	78.6	87.3	48.2	59.9
80-	97.3	116.2	120.9	103.8
85+	148.7	168.8	85.6	119.8
Crude rate	10.6	12.2	10.7	9.3



Number of deaths - three last periods

Sex	Period	Age group			Total	Yearly average
		0-49	50-69	70+		
Male	1993-96	0	10	4	14	3
	1997-00	0	5	6	11	3
	2001-03	0	2	5	7	2
Female	1993-96	0	0	1	1	0
	1997-00	0	0	0	0	0
	2001-03	0	0	2	2	1
Total	Total	0	17	18	35	3

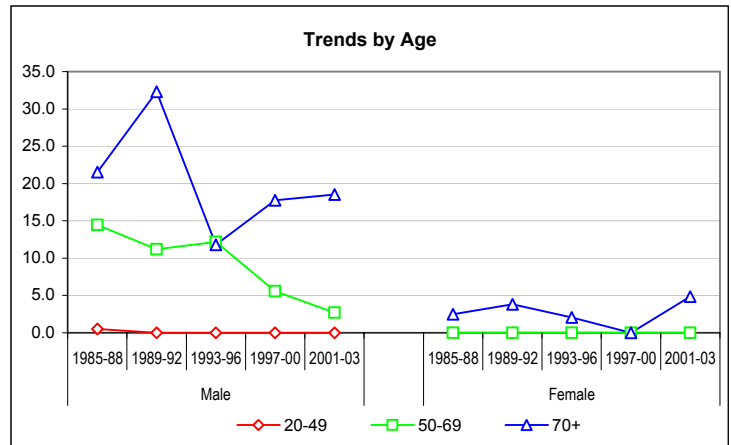


Crude rates by age-group & mean annual trends

*, **: Significant variations cf. Mantel-Haenszel test (95%, 99%)
Signification of mean annual trends not computed

Sex	Period	0-19	20-49	50-69	70+
Male	1985-88	0.00	0.50	14.45	21.53
	1989-92	0.00	0.00	11.18	32.32
	1993-96	0.00	0.00	12.19	11.80
	1997-00	0.00	0.00	5.57	17.75
	2001-03	0.00	0.00	2.68	18.53
Female	1985-88	0.00	0.00	0.00	2.47
	1989-92	0.00	0.00	0.00	3.80
	1993-96	0.00	0.00	0.00	2.05
	1997-00	0.00	0.00	0.00	0.00
	2001-03	0.00	0.00	0.00	4.86
Male	Annual trend		1.035	0.806	1.069
Female	Annual trend		1.031	1.012	1.023

(3 last periods)

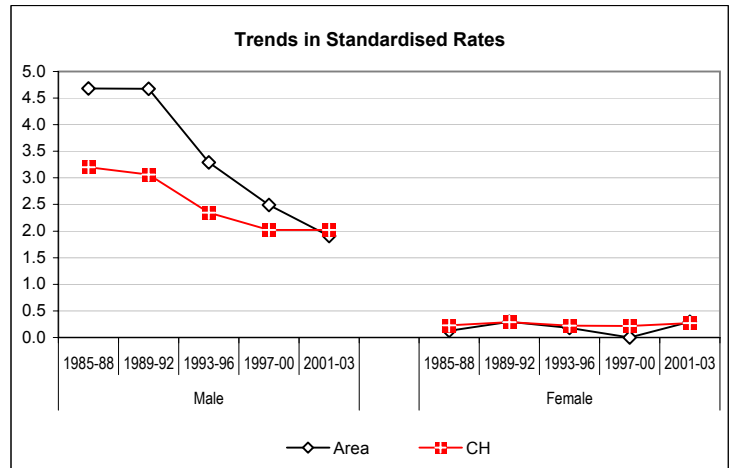


European standardized rate by period

Sex	Period	Area	CH	C.I. 95% of Area	
Male	1985-88	4.68	3.20	2.7	7.5
	1989-92	4.68	3.06	2.7	7.5
	1993-96	3.29	2.35	1.7	5.6
	1997-00	2.49	2.02	1.2	4.5
	2001-03	1.91	2.02	0.7	4.0
Female	1985-88	0.12	0.23	0.0	0.7
	1989-92	0.30	0.29	0.0	1.2
	1993-96	0.18	0.22	0.0	1.0
	1997-00	0.00	0.21	0.0	1.0
	2001-03	0.29	0.27	0.0	0.0
Male	Annual trend	0.925	0.978		
Female	Annual trend	#####	1.028		

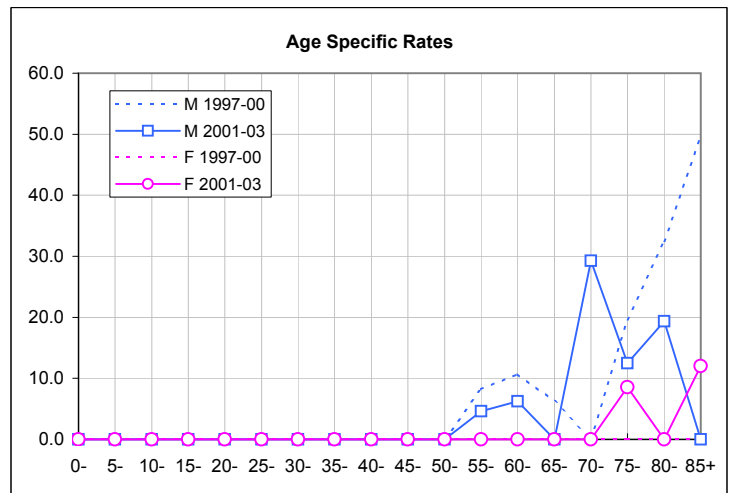
(3 last periods)

Area Fribourg
CH Whole Switzerland



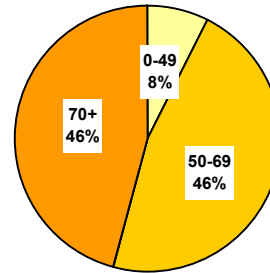
Age specific rates - last periods compared

Age	M		F	
	1997-00	2001-03	1997-00	2001-03
0-	0.0	0.0	0.0	0.0
5-	0.0	0.0	0.0	0.0
10-	0.0	0.0	0.0	0.0
15-	0.0	0.0	0.0	0.0
20-	0.0	0.0	0.0	0.0
25-	0.0	0.0	0.0	0.0
30-	0.0	0.0	0.0	0.0
35-	0.0	0.0	0.0	0.0
40-	0.0	0.0	0.0	0.0
45-	0.0	0.0	0.0	0.0
50-	0.0	0.0	0.0	0.0
55-	8.2	4.6	0.0	0.0
60-	10.7	6.2	0.0	0.0
65-	6.2	0.0	0.0	0.0
70-	0.0	29.3	0.0	0.0
75-	19.6	12.5	0.0	8.6
80-	32.4	19.4	0.0	0.0
85+	49.6	0.0	0.0	12.0
Crude rate	2.4	1.9	0.0	0.5



Number of deaths - three last periods

Sex	Period	Age group			Total	Yearly average
		0-49	50-69	70+		
Male	1993-96	13	144	126	283	71
	1997-00	19	131	152	302	76
	2001-03	10	99	105	214	71
Female	1993-96	8	27	19	54	14
	1997-00	17	42	31	90	23
	2001-03	10	27	27	64	21
Total	Total	77	470	460	1'007	92

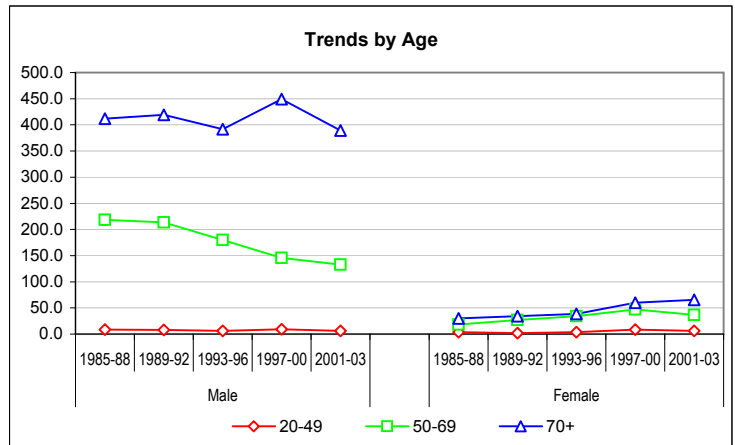


Crude rates by age-group & mean annual trends

*, **: Significant variations cf. Mantel-Haenszel test (95%, 99%)
Signification of mean annual trends not computed

Sex	Period	0-19	20-49	50-69	70+
Male	1985-88	0.00	8.65	218.30	411.63
	1989-92	0.00	7.79	213.70	419.16
	1993-96	0.00	6.06	179.75	391.41
	1997-00	0.00	8.95	145.91	449.46
	2001-03	0.00	6.11	132.67	389.12
Female	1985-88	0.00	3.47	18.29	29.84
	1989-92	0.00	2.07	26.69	34.17
	1993-96	0.00	3.92	34.08	38.31
	1997-00	0.00	8.28	47.25	59.91
	2001-03	0.00	6.23	36.92	65.54
Male	Annual trend		1.006	0.957	1.001
Female	Annual trend		1.075	1.015	1.082

(3 last periods)

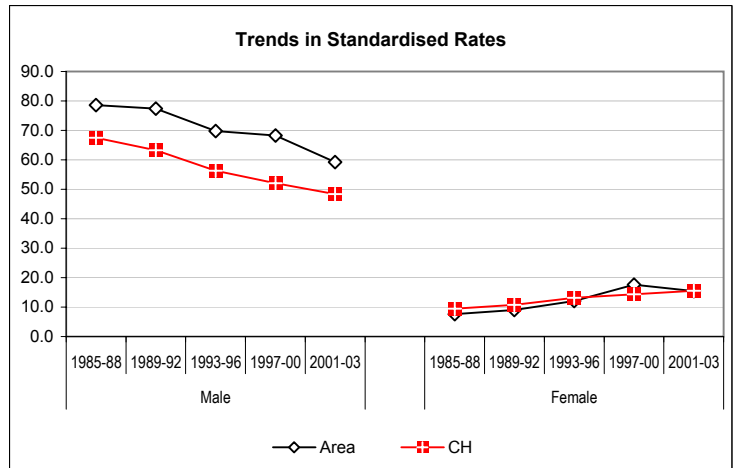


European standardized rate by period

Sex	Period	Area	CH	C.I. 95% of Area	
Male	1985-88	78.64	67.54	69.7	88.4
	1989-92	77.42	63.21	68.8	86.8
	1993-96	69.83	56.31	61.8	78.6
	1997-00	68.28	52.01	60.7	76.5
	2001-03	59.28	48.37	51.5	67.9
Female	1985-88	7.66	9.43	5.1	10.9
	1989-92	9.05	10.77	6.3	12.5
	1993-96	12.05	13.11	8.9	15.9
	1997-00	17.56	14.38	8.9	15.9
	2001-03	15.38	15.58	14.0	21.8
Male	Annual trend	0.978	0.979		
Female	Annual trend	1.039	1.025		

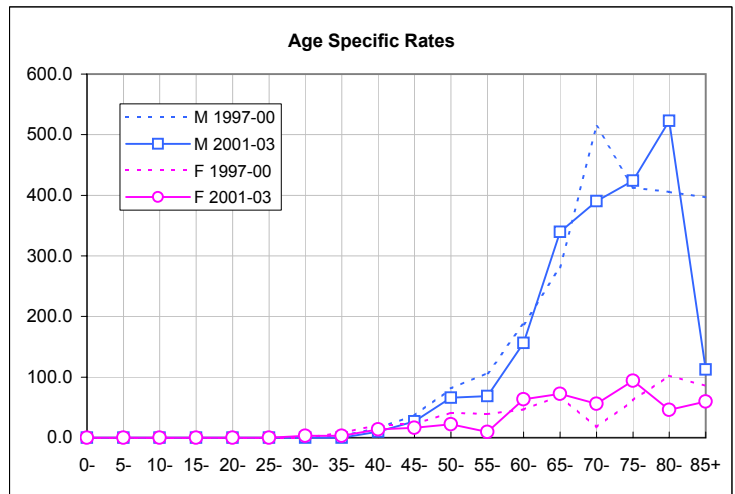
(3 last periods)

Area Fribourg
CH Whole Switzerland



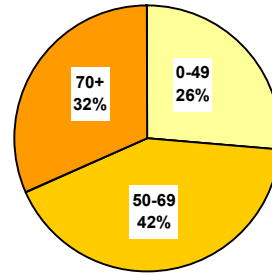
Age specific rates - last periods compared

Age	M		F	
	1997-00	2001-03	1997-00	2001-03
0-	0.0	0.0	0.0	0.0
5-	0.0	0.0	0.0	0.0
10-	0.0	0.0	0.0	0.0
15-	0.0	0.0	0.0	0.0
20-	0.0	0.0	0.0	0.0
25-	0.0	0.0	0.0	0.0
30-	0.0	0.0	0.0	3.4
35-	2.5	0.0	7.7	3.1
40-	16.6	9.9	20.9	13.9
45-	36.4	26.9	22.9	16.4
50-	81.2	66.2	41.3	22.1
55-	107.0	68.9	39.1	9.6
60-	187.6	156.1	46.7	63.6
65-	280.9	339.7	68.4	72.1
70-	513.6	390.4	17.5	56.0
75-	412.5	423.9	61.9	94.2
80-	405.5	522.9	102.3	46.1
85+	396.4	112.5	85.6	59.9
Crude rate	65.3	59.4	19.3	17.5



Number of deaths - three last periods

Sex	Period	Age group			Total	Yearly average
		0-49	50-69	70+		
Male	1993-96	2	4	1	7	2
	1997-00	1	1	1	3	1
	2001-03	1	1	2	4	1
Female	1993-96	1	1	1	3	1
	1997-00	0	1	1	2	1
	2001-03	0	0	0	0	0
Total	Total	5	8	6	19	2

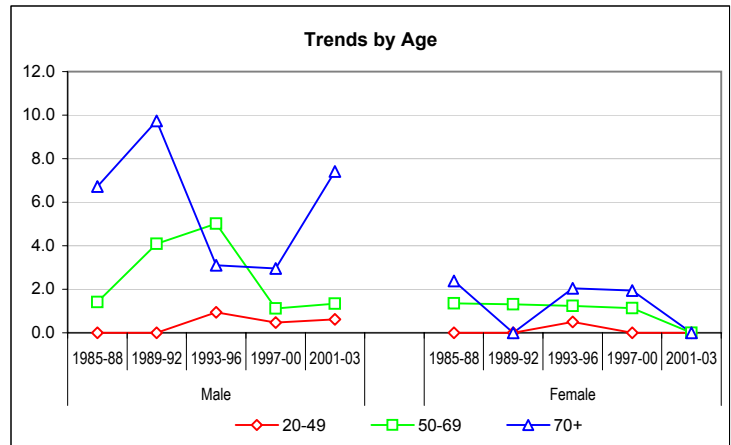


Crude rates by age-group & mean annual trends

*, **: Significant variations cf. Mantel-Haenszel test (95%, 99%)
Signification of mean annual trends not computed

Sex	Period	0-19	20-49	50-69	70+
Male	1985-88	0.00	0.00	1.42	6.72
	1989-92	0.00	0.00	4.08	9.74
	1993-96	0.00	0.95	5.01	3.10
	1997-00	0.00	0.47	1.12	2.96
	2001-03	0.00	0.61	1.34	7.42
Female	1985-88	0.00	0.00	1.35	2.38
	1989-92	0.00	0.00	1.31	0.00
	1993-96	0.00	0.50	1.24	2.05
	1997-00	0.00	0.00	1.13	1.94
	2001-03	0.00	0.00	0.00	0.00
Male	Annual trend		0.934	0.820	1.124
Female	Annual trend		0.369	0.398	0.402

(3 last periods)

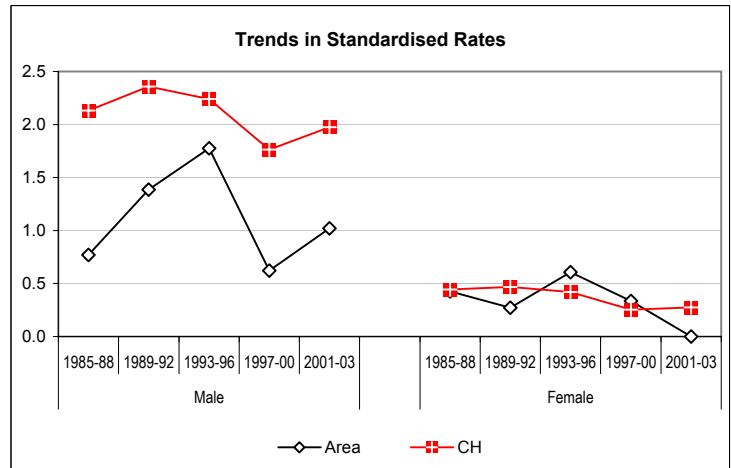


European standardized rate by period

Sex	Period	Area	CH	C.I. 95% of Area	
				Lower	Upper
Male	1985-88	0.77	2.13	0.1	2.3
	1989-92	1.39	2.36	0.5	3.1
	1993-96	1.78	2.24	0.7	3.7
	1997-00	0.62	1.76	0.1	1.9
	2001-03	1.02	1.98	0.3	2.7
Female	1985-88	0.43	0.44	0.0	1.6
	1989-92	0.27	0.47	0.0	1.6
	1993-96	0.61	0.42	0.1	1.9
	1997-00	0.33	0.25	0.1	1.9
	2001-03	0.00	0.27	0.0	1.3
Male	Annual trend	0.915	0.980		
Female	Annual trend	#####	0.937		

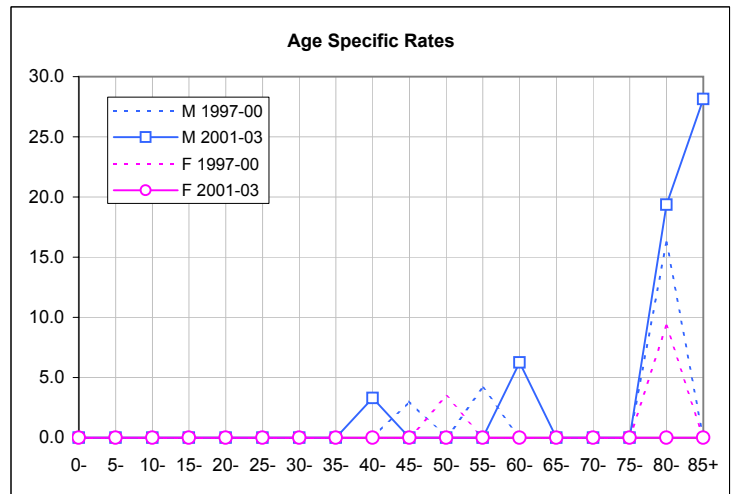
(3 last periods)

Area Fribourg
CH Whole Switzerland



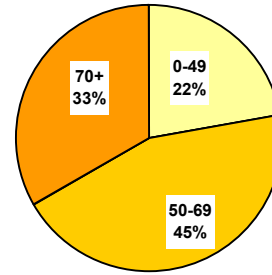
Age specific rates - last periods compared

Age	M		F	
	1997-00	2001-03	1997-00	2001-03
0-	0.0	0.0	0.0	0.0
5-	0.0	0.0	0.0	0.0
10-	0.0	0.0	0.0	0.0
15-	0.0	0.0	0.0	0.0
20-	0.0	0.0	0.0	0.0
25-	0.0	0.0	0.0	0.0
30-	0.0	0.0	0.0	0.0
35-	0.0	0.0	0.0	0.0
40-	0.0	3.3	0.0	0.0
45-	3.0	0.0	0.0	0.0
50-	0.0	0.0	3.4	0.0
55-	4.1	0.0	0.0	0.0
60-	0.0	6.2	0.0	0.0
65-	0.0	0.0	0.0	0.0
70-	0.0	0.0	0.0	0.0
75-	0.0	0.0	0.0	0.0
80-	16.2	19.4	9.3	0.0
85+	0.0	28.1	0.0	0.0
Crude rate	0.6	1.1	0.4	0.0



Number of deaths - three last periods

Sex	Period	Age group			Total	Yearly average
		0-49	50-69	70+		
Male	1993-96	1	1	1	3	1
	1997-00	0	0	1	1	0
	2001-03	0	2	0	2	1
Female	1993-96	1	0	0	1	0
	1997-00	0	1	1	2	1
	2001-03	0	0	0	0	0
Total	Total	2	4	3	9	1

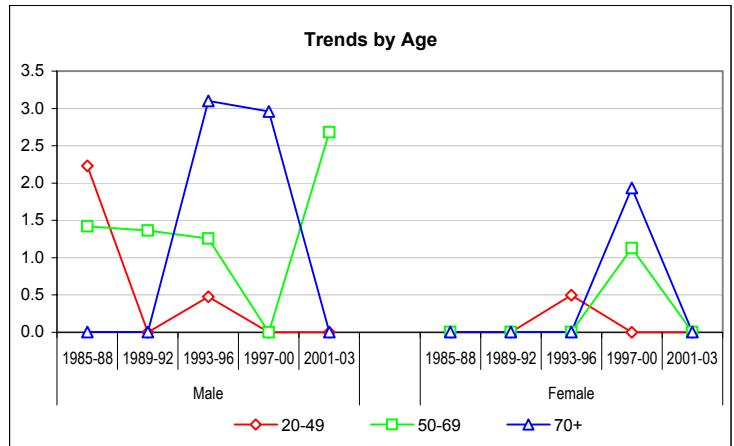


Crude rates by age-group & mean annual trends

*, **: Significant variations of cf. Mantel-Haenszel test (95%, 99%)
Signification of mean annual trends not computed

Sex	Period	0-19	20-49	50-69	70+
Male	1985-88	0.91	2.23	1.42	0.00
	1989-92	0.90	0.00 *	1.36	0.00
	1993-96	0.00	0.47	1.25	3.10
	1997-00	0.00	0.00	0.00	2.96
	2001-03	0.00	0.00	2.68	0.00
Female	1985-88	0.95	0.00	0.00	0.00
	1989-92	0.00	0.00	0.00	0.00
	1993-96	0.00	0.50	0.00	0.00
	1997-00	0.00	0.00	1.13	1.94
	2001-03	0.00	0.00	0.00	0.00
Male	Annual trend		0.371	1.008	0.403
Female	Annual trend		0.369	1.111	1.123

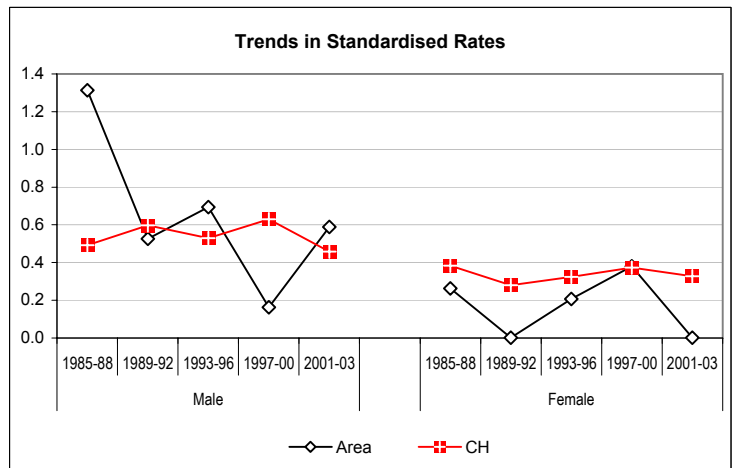
(3 last periods)



European standardized rate by period

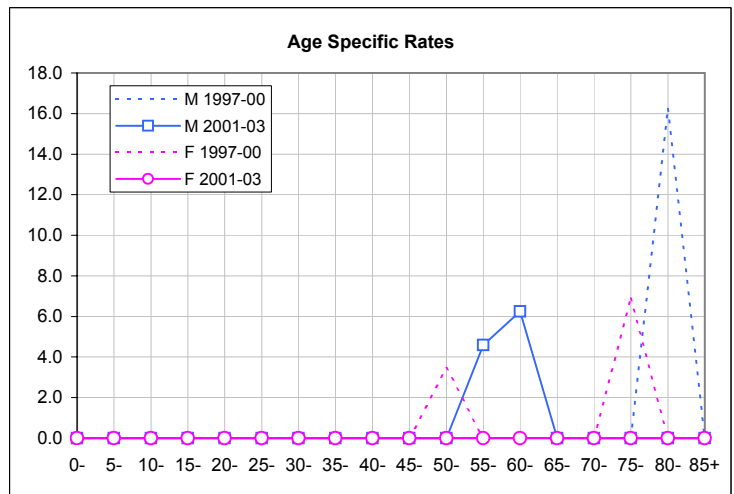
Sex	Period	Area	CH	C.I. 95% of Area	
Male	1985-88	1.31	0.49	0.5	2.9
	1989-92	0.53	0.60	0.0	1.9
	1993-96	0.69	0.53	0.1	2.1
	1997-00	0.16	0.63	0.0	0.9
	2001-03	0.59	0.46	0.1	2.2
Female	1985-88	0.26	0.38	0.0	1.5
	1989-92	0.00	0.28	0.0	0.0
	1993-96	0.21	0.32	0.0	1.2
	1997-00	0.38	0.37	0.0	1.2
	2001-03	0.00	0.33	0.0	1.4
Male	Annual trend	0.959	0.983		
Female	Annual trend	#####	1.003		

(3 last periods)



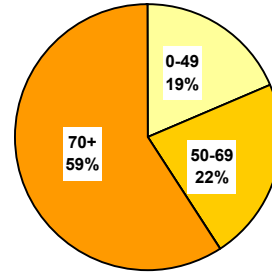
Age specific rates - last periods compared

Age	M		F	
	1997-00	2001-03	1997-00	2001-03
0-	0.0	0.0	0.0	0.0
5-	0.0	0.0	0.0	0.0
10-	0.0	0.0	0.0	0.0
15-	0.0	0.0	0.0	0.0
20-	0.0	0.0	0.0	0.0
25-	0.0	0.0	0.0	0.0
30-	0.0	0.0	0.0	0.0
35-	0.0	0.0	0.0	0.0
40-	0.0	0.0	0.0	0.0
45-	0.0	0.0	0.0	0.0
50-	0.0	0.0	3.4	0.0
55-	0.0	4.6	0.0	0.0
60-	0.0	6.2	0.0	0.0
65-	0.0	0.0	0.0	0.0
70-	0.0	0.0	0.0	0.0
75-	0.0	0.0	6.9	0.0
80-	16.2	0.0	0.0	0.0
85+	0.0	0.0	0.0	0.0
Crude rate	0.2	0.6	0.4	0.0



Number of deaths - three last periods

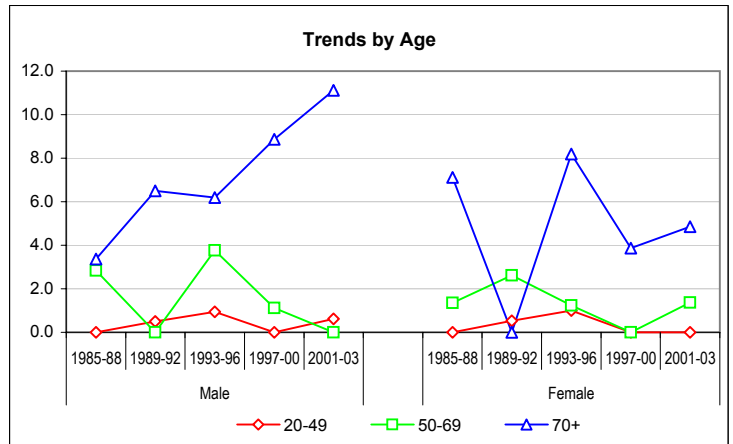
Sex	Period	Age group			Total	Yearly average
		0-49	50-69	70+		
Male	1993-96	2	3	2	7	2
	1997-00	0	1	3	4	1
	2001-03	1	0	3	4	1
Female	1993-96	2	1	4	7	2
	1997-00	0	0	2	2	1
	2001-03	0	1	2	3	1
Total	Total	5	6	16	27	2



Crude rates by age-group & mean annual trends

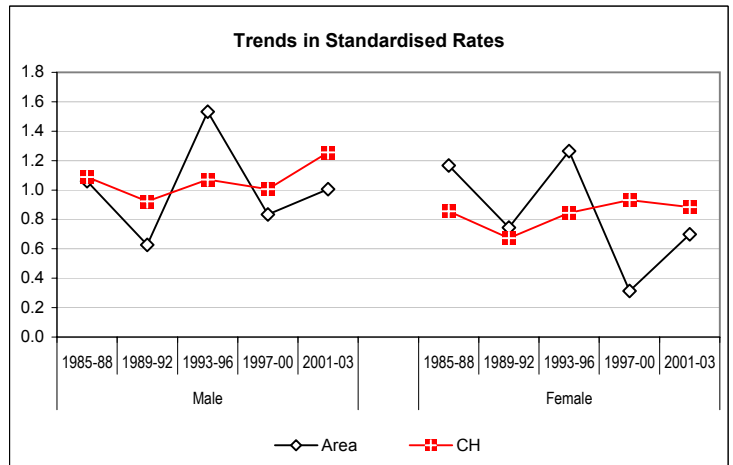
*, **: Significant variations of cf. Mantel-Haenszel test (95%, 99%)
Signification of mean annual trends not computed

Sex	Period	0-19	20-49	50-69	70+
Male	1985-88	0.91	0.00	2.83	3.36
	1989-92	0.00	0.50	0.00	6.49
	1993-96	0.00	0.95	3.76	6.20
	1997-00	0.00	0.00	1.12	8.87
	2001-03	0.00	0.61	0.00	11.12
Female	1985-88	0.95	0.00	1.35	7.12
	1989-92	0.00	0.54	2.62	0.00
	1993-96	0.00	0.99	1.24	8.19
	1997-00	0.00	0.00	0.00	3.87
	2001-03	0.00	0.00	1.37	4.86
Male	Annual trend (3 last periods)		0.851	0.336	1.088
Female	Annual trend (3 last periods)		0.333	0.922	0.922



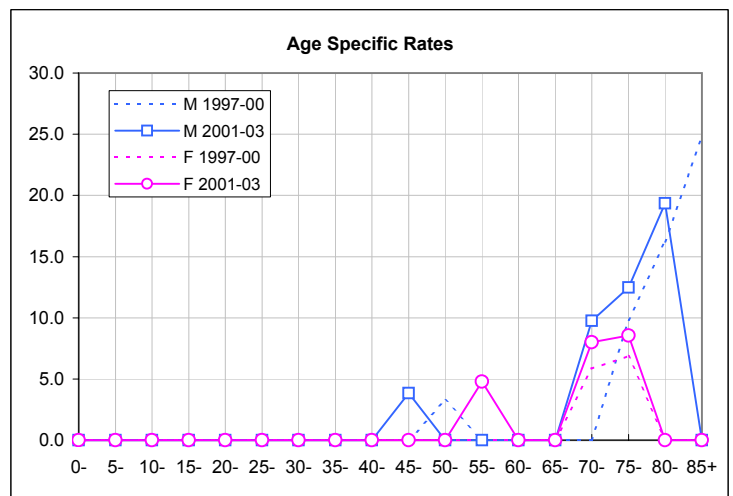
European standardized rate by period

Sex	Period	Area	CH	C.I. 95% of Area	
				Lower	Upper
Male	1985-88	1.06	1.09	0.3	2.8
	1989-92	0.63	0.92	0.1	1.9
	1993-96	1.53	1.07	0.6	3.2
	1997-00	0.83	1.01	0.2	2.2
	2001-03	1.01	1.26	0.3	2.6
Female	1985-88	1.17	0.86	0.3	2.8
	1989-92	0.74	0.67	0.1	2.2
	1993-96	1.26	0.85	0.5	2.7
	1997-00	0.31	0.93	0.5	2.7
	2001-03	0.70	0.88	0.0	1.2
Male	Annual trend (3 last periods)	0.937	1.021		
Female	Annual trend (3 last periods)	0.906	1.007		



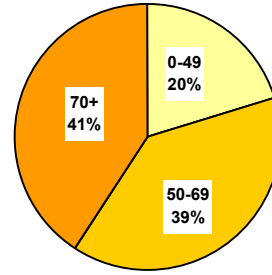
Age specific rates - last periods compared

Age	M		F	
	1997-00	2001-03	1997-00	2001-03
0-	0.0	0.0	0.0	0.0
5-	0.0	0.0	0.0	0.0
10-	0.0	0.0	0.0	0.0
15-	0.0	0.0	0.0	0.0
20-	0.0	0.0	0.0	0.0
25-	0.0	0.0	0.0	0.0
30-	0.0	0.0	0.0	0.0
35-	0.0	0.0	0.0	0.0
40-	0.0	0.0	0.0	0.0
45-	0.0	3.8	0.0	0.0
50-	3.2	0.0	0.0	0.0
55-	0.0	0.0	0.0	4.8
60-	0.0	0.0	0.0	0.0
65-	0.0	0.0	0.0	0.0
70-	0.0	9.8	5.8	8.0
75-	9.8	12.5	6.9	8.6
80-	16.2	19.4	0.0	0.0
85+	24.8	0.0	0.0	0.0
Crude rate	0.9	1.1	0.4	0.8



Number of deaths - three last periods

Sex	Period	Age group			Total	Yearly average
		0-49	50-69	70+		
Male	1993-96	3	5	7	15	4
	1997-00	3	8	4	15	4
	2001-03	3	10	8	21	7
Female	1993-96	3	3	6	12	3
	1997-00	2	5	6	13	3
	2001-03	3	2	4	9	3
Total	Total	17	33	34	84	8

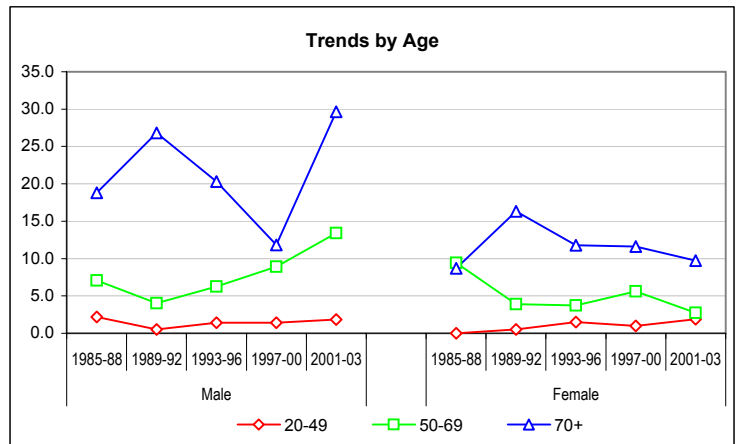


Crude rates by age-group & mean annual trends

*, **: Significant variations of cf. Mantel-Haenszel test (95%, 99%)
Signification of mean annual trends not computed

Sex	Period	0-19	20-49	50-69	70+
Male	1985-88	0.00	2.19	7.05	18.81
	1989-92	0.00	0.49	4.03	26.83
	1993-96	0.00	1.41	6.24	20.29
	1997-00	0.00	1.41	8.91	11.83
	2001-03	0.00	1.84	13.40	29.65
Female	1985-88	0.00	0.00 *	9.44	8.68
	1989-92	0.00	0.52	3.92	16.33
	1993-96	0.00	1.48	3.72	11.79
	1997-00	0.00	0.98	5.63	11.60
	2001-03	0.00	1.87	2.74	9.71
Male	Annual trend		1.036	1.114	1.045
Female	Annual trend		1.026	0.965	0.974

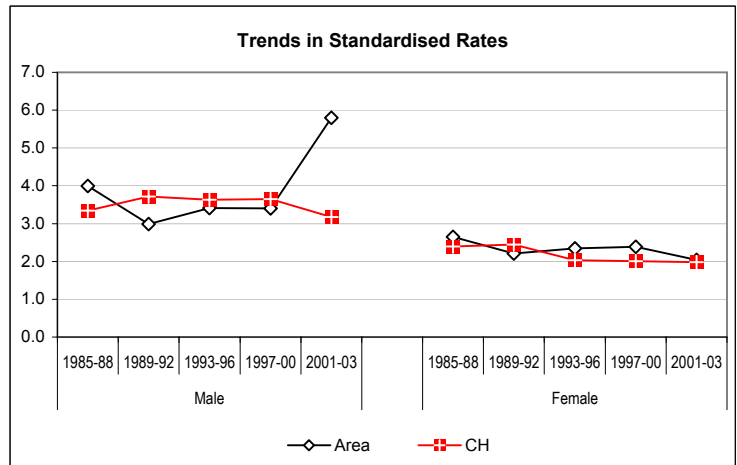
(3 last periods)



European standardized rate by period

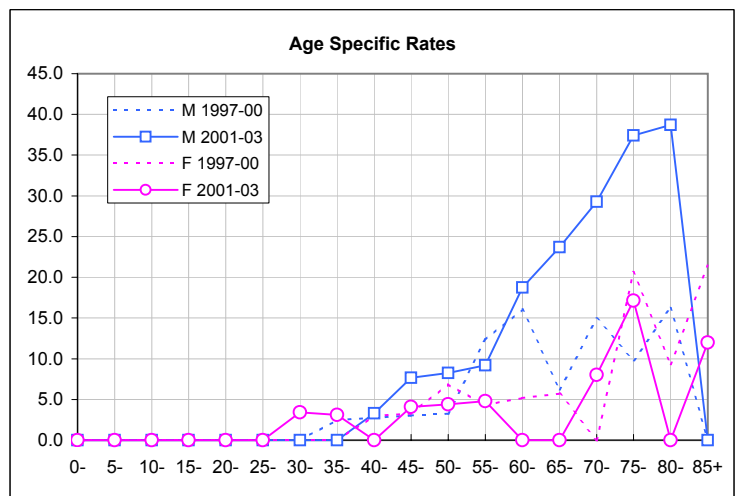
Sex	Period	Area	CH	C.I. 95% of Area	
Male	1985-88	3.99	3.34	2.2	6.7
	1989-92	2.99	3.72	1.5	5.3
	1993-96	3.41	3.63	1.9	5.7
	1997-00	3.41	3.65	1.9	5.7
	2001-03	5.80	3.17	3.6	8.9
Female	1985-88	2.65	2.40	1.2	4.9
	1989-92	2.21	2.45	1.0	4.0
	1993-96	2.35	2.03	1.1	4.2
	1997-00	2.39	2.01	1.1	4.2
	2001-03	2.04	1.98	1.2	4.2
Male	Annual trend	1.074	0.982		
Female	Annual trend	0.982	0.996		

(3 last periods)



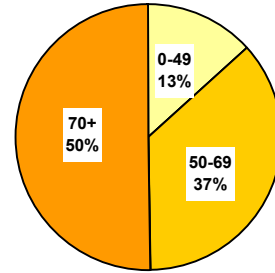
Age specific rates - last periods compared

Age	M		F	
	1997-00	2001-03	1997-00	2001-03
0-	0.0	0.0	0.0	0.0
5-	0.0	0.0	0.0	0.0
10-	0.0	0.0	0.0	0.0
15-	0.0	0.0	0.0	0.0
20-	0.0	0.0	0.0	0.0
25-	0.0	0.0	0.0	0.0
30-	0.0	0.0	0.0	3.4
35-	2.5	0.0	0.0	3.1
40-	2.8	3.3	3.0	0.0
45-	3.0	7.7	3.3	4.1
50-	3.2	8.3	6.9	4.4
55-	12.3	9.2	4.3	4.8
60-	16.1	18.7	5.2	0.0
65-	6.2	23.7	5.7	0.0
70-	14.9	29.3	0.0	8.0
75-	9.8	37.4	20.6	17.1
80-	16.2	38.7	9.3	0.0
85+	0.0	0.0	21.4	12.0
Crude rate	3.2	5.8	2.8	2.5



Number of deaths - three last periods

Sex	Period	Age group			Total	Yearly average
		0-49	50-69	70+		
Male	1993-96	0	0	2	2	1
	1997-00	0	0	0	0	0
	2001-03	0	0	0	0	0
Female	1993-96	20	59	77	156	39
	1997-00	26	56	94	176	44
	2001-03	14	50	54	118	39
Total	Total	60	165	227	452	41

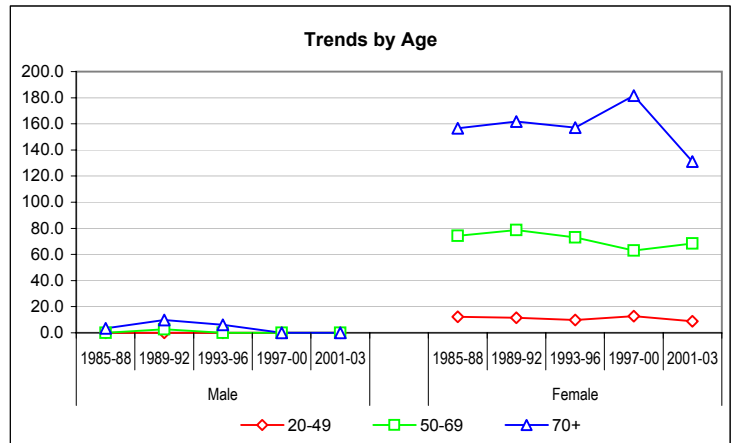


Crude rates by age-group & mean annual trends

*, **: Significant variations cf. Mantel-Haenszel test (95%, 99%)
 Signification of mean annual trends not computed

Sex	Period	0-19	20-49	50-69	70+
Male	1985-88	0.00	0.00	0.00	3.36
	1989-92	0.00	0.00	2.72	9.74
	1993-96	0.00	0.00	0.00	6.20
	1997-00	0.00	0.00	0.00	0.00
	2001-03	0.00	0.00	0.00	0.00
Female	1985-88	0.00	12.26	74.30	156.54
	1989-92	0.00	11.51	78.68	161.79
	1993-96	0.00	9.81	73.11	157.23
	1997-00	0.00	12.66	63.00	181.64
	2001-03	0.00	8.72	68.38	131.08 *
Male	Annual trend		1.035	1.008	0.331
Female	Annual trend		0.988	0.989	0.978

(3 last periods)

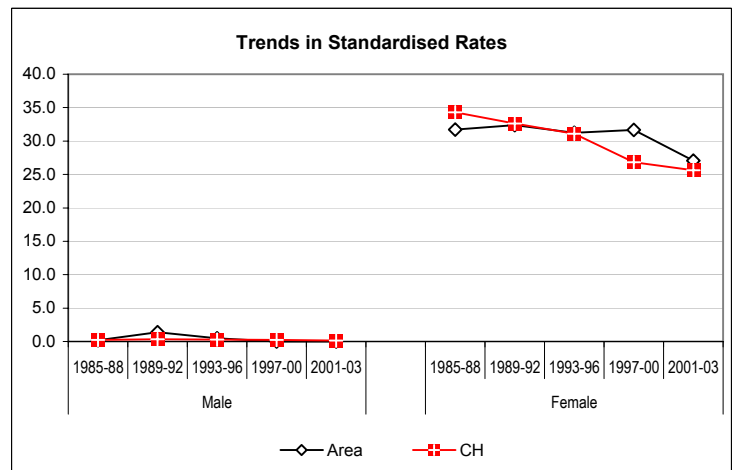


European standardized rate by period

Sex	Period	Area	CH	C.I. 95% of Area	
				Lower	Upper
Male	1985-88	0.21	0.25	0.0	1.2
	1989-92	1.37	0.34	0.4	3.2
	1993-96	0.49	0.27	0.0	1.8
	1997-00	0.00	0.25	0.0	0.0
	2001-03	0.00	0.15	0.0	0.0
Female	1985-88	31.74	34.29	26.5	37.7
	1989-92	32.40	32.63	27.2	38.3
	1993-96	31.22	31.07	26.3	36.8
	1997-00	31.65	26.82	26.3	36.8
	2001-03	27.07	25.65	26.9	37.0
Male	Annual trend	#####	0.926		
Female	Annual trend	0.981	0.972		

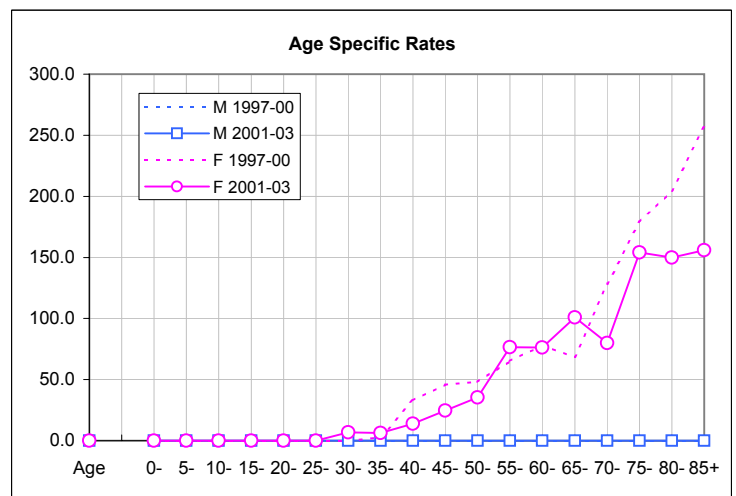
(3 last periods)

Area Fribourg
 CH Whole Switzerland



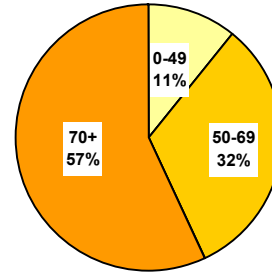
Age specific rates - last periods compared

Age	M		F	
	1997-00	2001-03	1997-00	2001-03
0-	0.0	0.0	0.0	0.0
5-	0.0	0.0	0.0	0.0
10-	0.0	0.0	0.0	0.0
15-	0.0	0.0	0.0	0.0
20-	0.0	0.0	0.0	0.0
25-	0.0	0.0	0.0	0.0
30-	0.0	0.0	0.0	6.8
35-	0.0	0.0	2.6	6.2
40-	0.0	0.0	32.9	13.9
45-	0.0	0.0	45.9	24.6
50-	0.0	0.0	48.2	35.3
55-	0.0	0.0	65.1	76.6
60-	0.0	0.0	77.8	76.3
65-	0.0	0.0	68.4	101.0
70-	0.0	0.0	128.5	80.0
75-	0.0	0.0	178.9	154.1
80-	0.0	0.0	204.6	149.9
85+	0.0	0.0	256.9	155.8
Crude rate	0.0	0.0	37.7	32.2



Number of deaths - three last periods

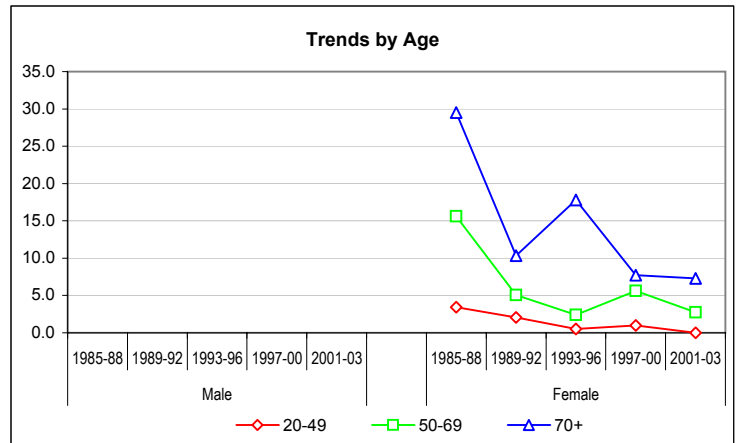
Sex	Period	Age group			Total	Yearly average
		0-49	50-69	70+		
Male	1993-96					
	1997-00					
	2001-03					
Female	1993-96	1	2	9	12	3
	1997-00	2	5	4	11	3
	2001-03	0	2	3	5	2
Total	Total	3	9	16	28	3



Crude rates by age-group & mean annual trends

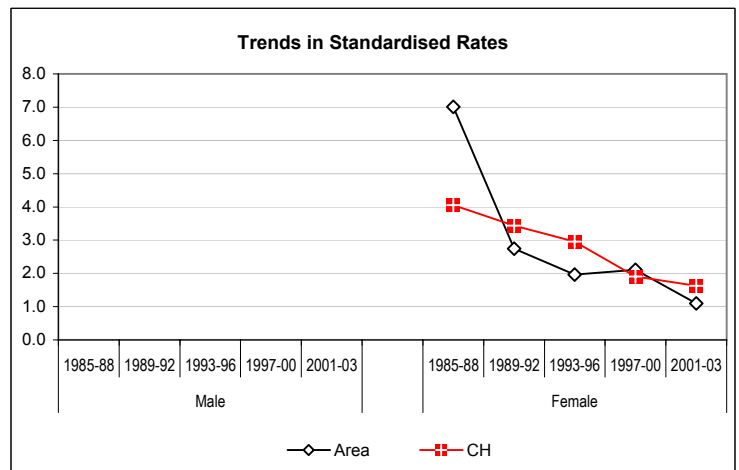
*, **: Significant variations cf. Mantel-Haenszel test (95%, 99%)
Signification of mean annual trends not computed

Sex	Period	0-19	20-49	50-69	70+
Male	1985-88				
	1989-92				
	1993-96				
	1997-00				
	2001-03				
Female	1985-88	0.00	3.43	15.61	29.51
	1989-92	0.00	2.05	5.05 *	10.35 *
	1993-96	0.00	0.50	2.39	17.81
	1997-00	0.00	0.98	5.63	7.73
	2001-03	0.00	0.00	2.74	7.29
Male	Annual trend				
Female	Annual trend (3 last periods)		0.409	1.030	0.876



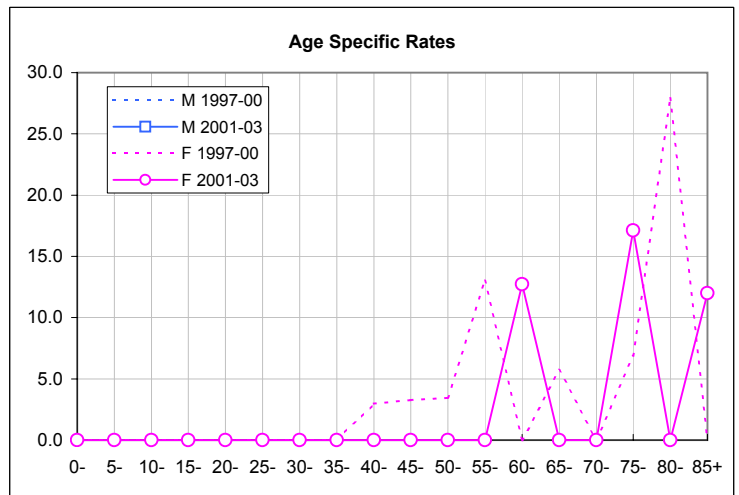
European standardized rate by period

Sex	Period	Area	CH	C.I. 95% of Area	
Male	1985-88				
	1989-92				
	1993-96				
	1997-00				
	2001-03				
Female	1985-88	7.01	4.05	4.6	10.2
	1989-92	2.75	3.44	1.4	4.9
	1993-96	1.97	2.95	0.9	3.6
	1997-00	2.11	1.90	0.9	3.6
	2001-03	1.10	1.62	1.0	3.9
Male	Annual trend				
Female	Annual trend (3 last periods)	0.925	0.917		
Area	Fribourg				
CH	Whole Switzerland				



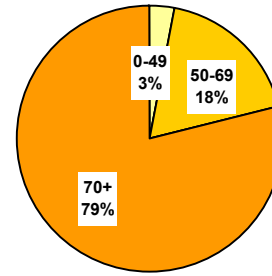
Age specific rates - last periods compared

Age	M		F	
	1997-00	2001-03	1997-00	2001-03
0-			0.0	0.0
5-			0.0	0.0
10-			0.0	0.0
15-			0.0	0.0
20-			0.0	0.0
25-			0.0	0.0
30-			0.0	0.0
35-			0.0	0.0
40-			3.0	0.0
45-			3.3	0.0
50-			3.4	0.0
55-			13.0	0.0
60-			0.0	12.7
65-			5.7	0.0
70-			0.0	0.0
75-			6.9	17.1
80-			27.9	0.0
85+			0.0	12.0
Crude rate			2.4	1.4



Number of deaths - three last periods

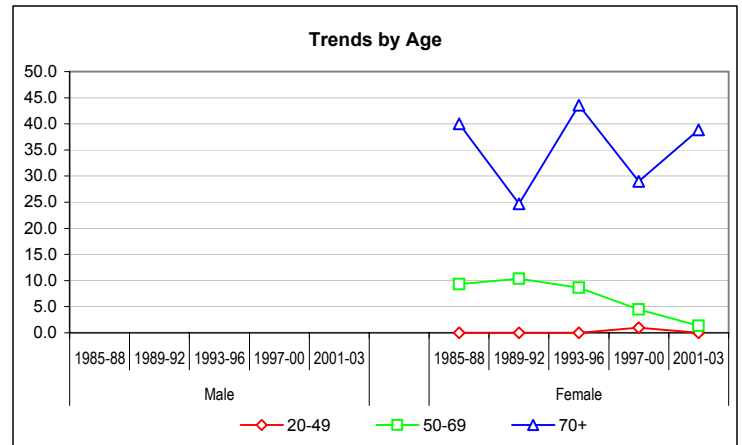
Sex	Period	Age group			Total	Yearly average
		0-49	50-69	70+		
Male	1993-96					
	1997-00					
	2001-03					
Female	1993-96	0	7	21	28	7
	1997-00	2	4	15	21	5
	2001-03	0	1	16	17	6
Total	Total	2	12	52	66	6



Crude rates by age-group & mean annual trends

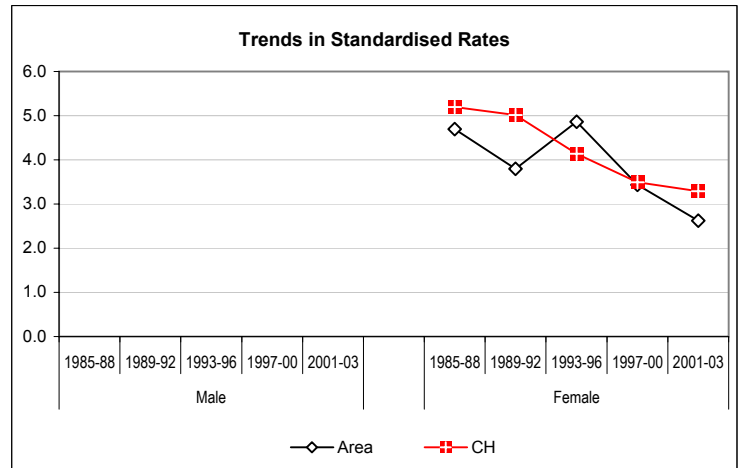
*, **: Significant variations cf. Mantel-Haenszel test (95%, 99%)
Signification of mean annual trends not computed

Sex	Period	0-19	20-49	50-69	70+
Male	1985-88				
	1989-92				
	1993-96				
	1997-00				
	2001-03				
Female	1985-88	0.00	0.00	9.31	39.99
	1989-92	0.00	0.00	10.33	24.69
	1993-96	0.00	0.00	8.62	43.57
	1997-00	0.00	0.98	4.50	28.99
	2001-03	0.00	0.00	1.37	38.84
Male	Annual trend				
Female	Annual trend (3 last periods)		1.142	0.773	0.979



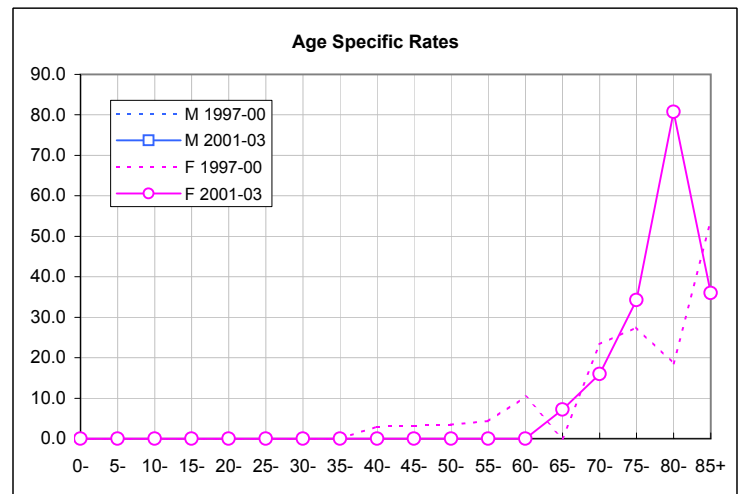
European standardized rate by period

Sex	Period	Area	CH	C.I. 95% of Area	
Male	1985-88				
	1989-92				
	1993-96				
	1997-00				
	2001-03				
Female	1985-88	4.70	5.20	2.9	7.1
	1989-92	3.80	5.01	2.2	6.1
	1993-96	4.86	4.14	3.1	7.2
	1997-00	3.43	3.50	3.1	7.2
	2001-03	2.62	3.29	2.0	5.4
Male	Annual trend				
Female	Annual trend (3 last periods)	0.916	0.967		
Area	Fribourg				
CH	Whole Switzerland				



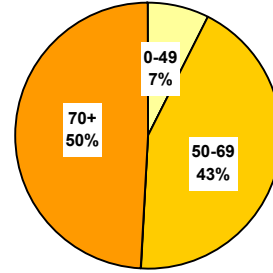
Age specific rates - last periods compared

Age	M		F	
	1997-00	2001-03	1997-00	2001-03
0-			0.0	0.0
5-			0.0	0.0
10-			0.0	0.0
15-			0.0	0.0
20-			0.0	0.0
25-			0.0	0.0
30-			0.0	0.0
35-			0.0	0.0
40-			3.0	0.0
45-			3.3	0.0
50-			3.4	0.0
55-			4.3	0.0
60-			10.4	0.0
65-			0.0	7.2
70-			23.4	16.0
75-			27.5	34.2
80-			18.6	80.7
85+			53.5	36.0
Crude rate			4.5	4.6



Number of deaths - three last periods

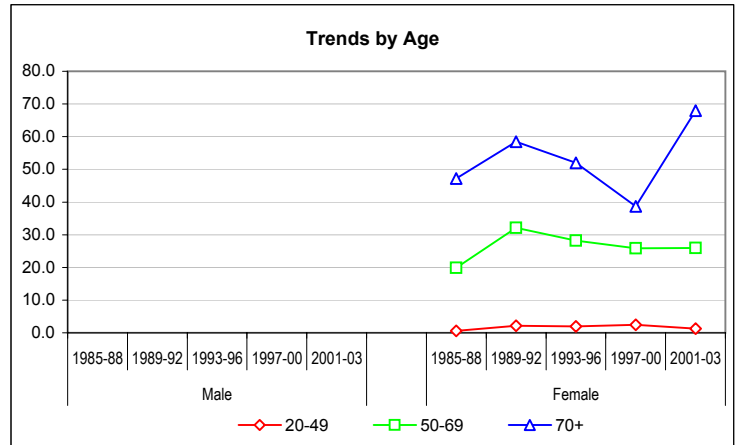
Sex	Period	Age group			Total	Yearly average
		0-49	50-69	70+		
Male	1993-96					
	1997-00					
	2001-03					
Female	1993-96	4	23	25	52	13
	1997-00	5	23	20	48	12
	2001-03	2	19	28	49	16
Total	Total	11	65	73	149	14



Crude rates by age-group & mean annual trends

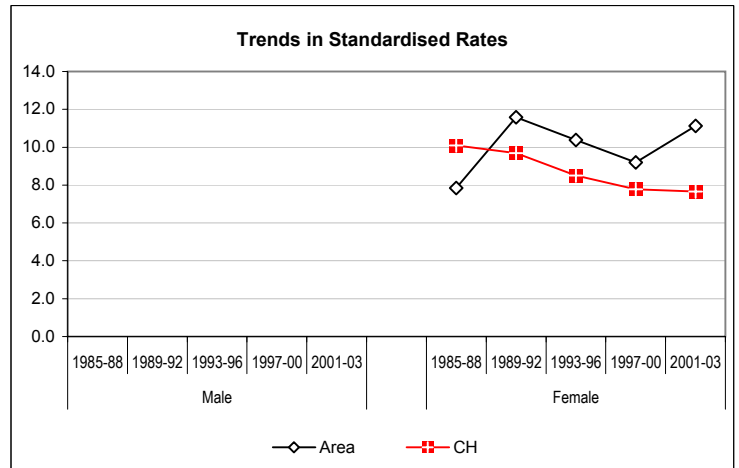
*, **: Significant variations cf. Mantel-Haenszel test (95%, 99%)
Signification of mean annual trends not computed

Sex	Period	0-19	20-49	50-69	70+
Male	1985-88				
	1989-92				
	1993-96				
	1997-00				
	2001-03				
Female	1985-88	0.00	0.60	19.84	47.23 *
	1989-92	0.00	2.14	32.16	58.41
	1993-96	0.00	1.98	28.21	51.96
	1997-00	0.00	2.44	25.88	38.65
	2001-03	0.00	1.25	25.98	67.97
Male	Annual trend				
Female	Annual trend (3 last periods)		0.942	0.988	1.033



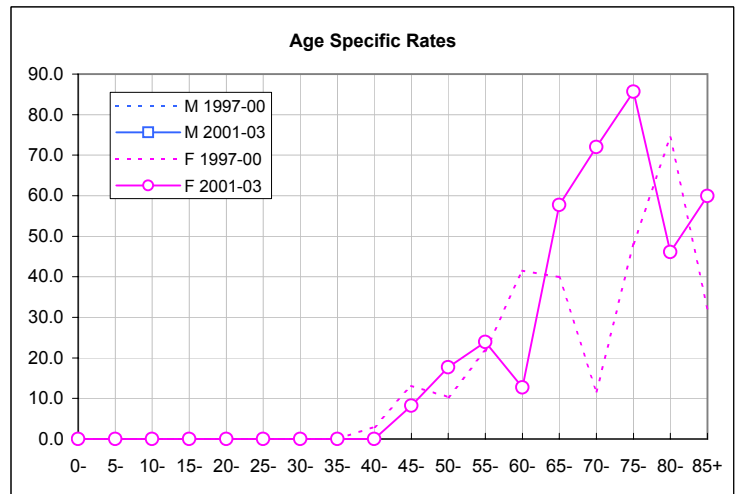
European standardized rate by period

Sex	Period	Area	CH	C.I. 95% of Area	
Male	1985-88				
	1989-92				
	1993-96				
	1997-00				
	2001-03				
Female	1985-88	7.85	10.09	5.3	11.1
	1989-92	11.58	9.69	8.6	15.3
	1993-96	10.39	8.51	7.6	13.9
	1997-00	9.20	7.78	7.6	13.9
	2001-03	11.12	7.66	6.6	12.4
Male	Annual trend				
Female	Annual trend (3 last periods)	1.008	0.985		
Area	Fribourg				
CH	Whole Switzerland				



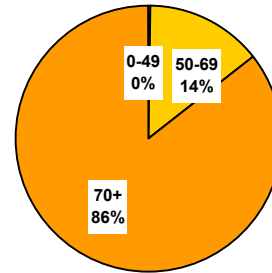
Age specific rates - last periods compared

Age	M		F	
	1997-00	2001-03	1997-00	2001-03
0-			0.0	0.0
5-			0.0	0.0
10-			0.0	0.0
15-			0.0	0.0
20-			0.0	0.0
25-			0.0	0.0
30-			0.0	0.0
35-			0.0	0.0
40-			3.0	0.0
45-			13.1	8.2
50-			10.3	17.7
55-			21.7	23.9
60-			41.5	12.7
65-			39.9	57.7
70-			11.7	72.0
75-			48.2	85.6
80-			74.4	46.1
85+			32.1	59.9
Crude rate			10.3	13.4



Number of deaths - three last periods

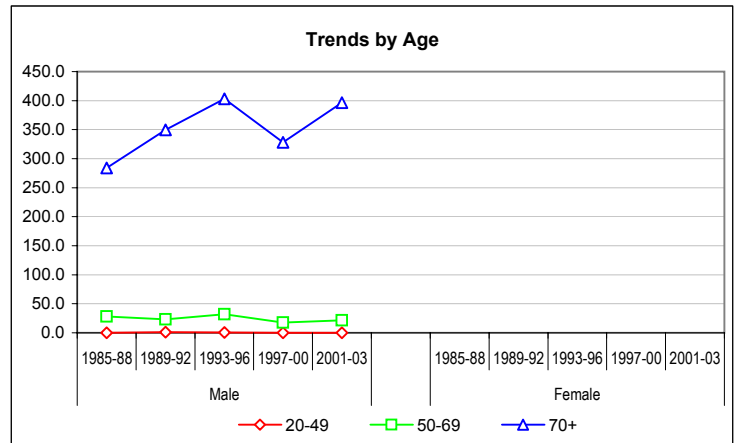
Sex	Period	Age group			Total	Yearly average
		0-49	50-69	70+		
Male	1993-96	1	25	130	157	39
	1997-00	0	16	111	127	32
	2001-03	0	16	107	123	41
Female	1993-96					
	1997-00					
	2001-03					
Total	Total	1	57	348	407	37



Crude rates by age-group & mean annual trends

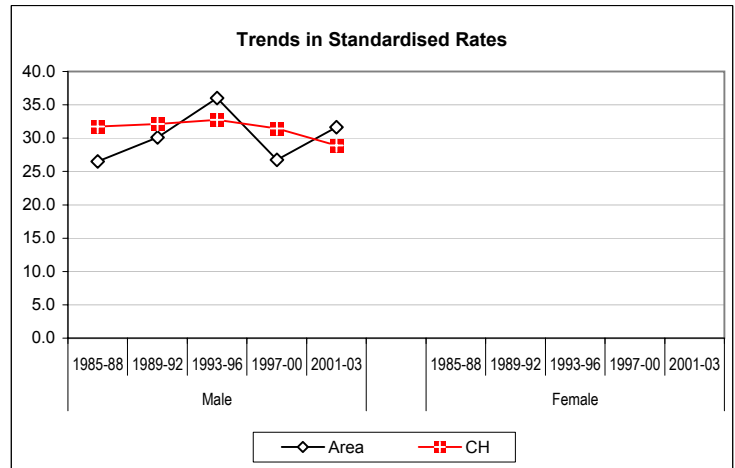
*, **: Significant variations cf. Mantel-Haenszel test (95%, 99%)
Signification of mean annual trends not computed

Sex	Period	0-19	20-49	50-69	70+
Male	1985-88	0.00	0.00	28.11	283.83
	1989-92	0.00	0.94	23.26	349.47
	1993-96	0.00	0.47	31.89	402.90
	1997-00	0.00	0.00	17.82	328.22
	2001-03	0.00	0.00	21.44	396.54
Female	1985-88				
	1989-92				
	1993-96				
	1997-00				
	2001-03				
Male Annual trend			0.371	0.940	0.995
Female Annual trend					
(3 last periods)					



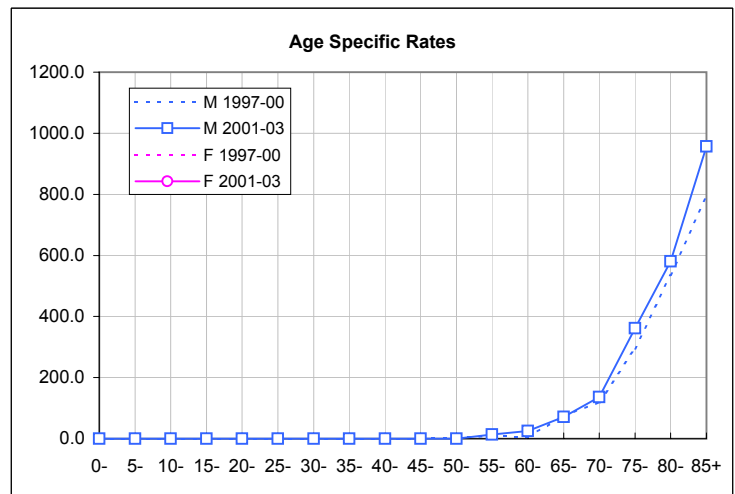
European standardized rate by period

Sex	Period	Area	CH	C.I. 95% of Area	
Male	1985-88	26.53	31.74	21.5	32.4
	1989-92	30.12	32.11	25.0	36.0
	1993-96	36.01	32.73	30.5	42.2
	1997-00	26.73	31.45	22.2	31.9
	2001-03	31.63	28.92	26.2	37.8
Female	1985-88				
	1989-92				
	1993-96				
	1997-00				
	2001-03				
Male Annual trend		0.979	0.983		
Female Annual trend					
(3 last periods)					
Area	Fribourg				
CH	Whole Switzerland				



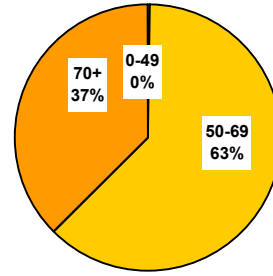
Age specific rates - last periods compared

Age	M		F	
	1997-00	2001-03	1997-00	2001-03
0-	0.0	0.0		
5-	0.0	0.0		
10-	0.0	0.0		
15-	0.0	0.0		
20-	0.0	0.0		
25-	0.0	0.0		
30-	0.0	0.0		
35-	0.0	0.0		
40-	0.0	0.0		
45-	0.0	0.0		
50-	3.2	0.0		
55-	8.2	13.8		
60-	5.4	25.0		
65-	74.9	71.1		
70-	119.1	136.6		
75-	294.6	361.6		
80-	535.3	580.9		
85+	792.9	956.7		
Crude rate	27.5	34.2		



Number of deaths - three last periods

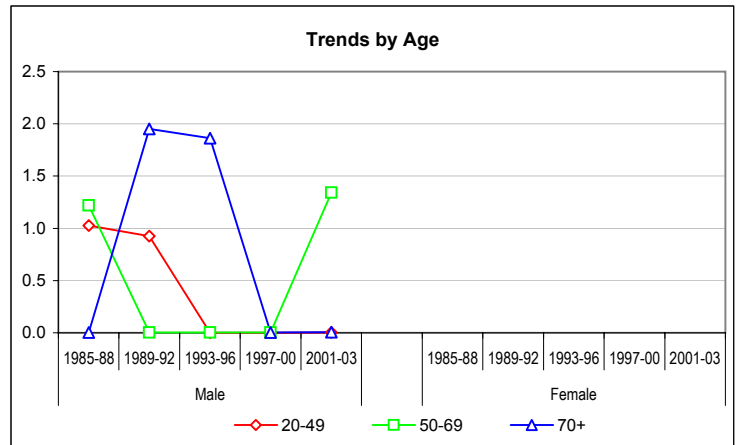
Sex	Period	Age group			Total	Yearly average
		0-49	50-69	70+		
Male	1993-96	0	0	1	1	0
	1997-00	0	0	0	0	0
	2001-03	0	1	0	1	0
Female	1993-96					
	1997-00					
	2001-03					
Total	Total	0	1	1	2	0



Crude rates by age-group & mean annual trends

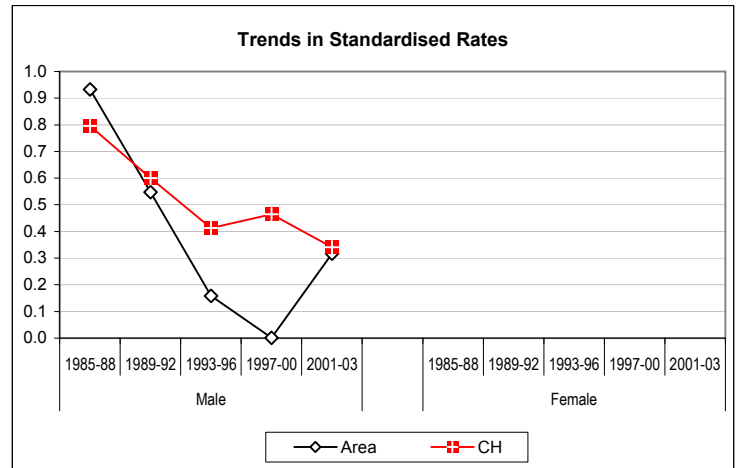
*, **: Significant variations cf. Mantel-Haenszel test (95%, 99%)
Signification of mean annual trends not computed

Sex	Period	0-19	20-49	50-69	70+
Male	1985-88	0.84	1.03	1.22	0.00
	1989-92	0.00	0.93	0.00	1.95
	1993-96	0.00	0.00	0.00	1.86
	1997-00	0.00	0.00	0.00	0.00
	2001-03	0.00	0.00	1.34	0.00
Female	1985-88				
	1989-92				
	1993-96				
	1997-00				
	2001-03				
Male	Annual trend		1.035	2.563	0.396
Female	Annual trend				
	(3 last periods)				



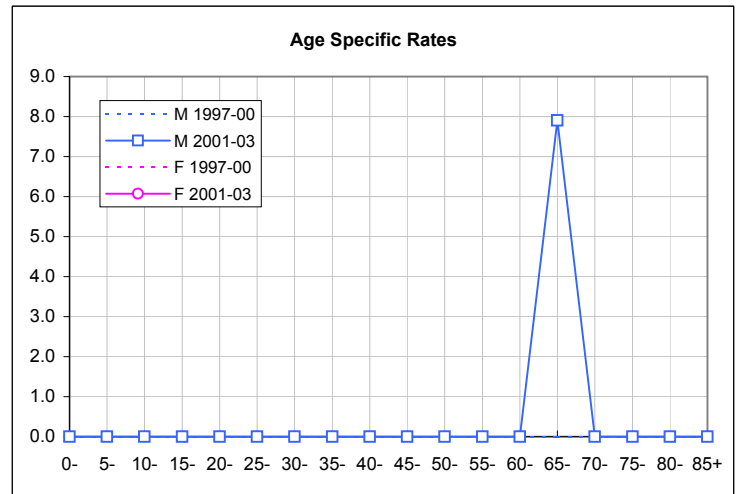
European standardized rate by period

Sex	Period	Area	CH	C.I. 95% of Area	
Male	1985-88	0.93	0.80	0.2	2.5
	1989-92	0.55	0.60	0.1	1.8
	1993-96	0.16	0.41	0.0	1.3
	1997-00	0.00	0.46	0.0	0.0
	2001-03	0.32	0.34	0.0	1.8
Female	1985-88				
	1989-92				
	1993-96				
	1997-00				
	2001-03				
Male	Annual trend	#####	0.976		
Female	Annual trend				
	(3 last periods)				
Area	Fribourg				
CH	Whole Switzerland				



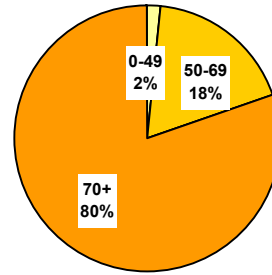
Age specific rates - last periods compared

Age	M 1997-00	M 2001-03	F 1997-00	F 2001-03
0-	0.0	0.0		
5-	0.0	0.0		
10-	0.0	0.0		
15-	0.0	0.0		
20-	0.0	0.0		
25-	0.0	0.0		
30-	0.0	0.0		
35-	0.0	0.0		
40-	0.0	0.0		
45-	0.0	0.0		
50-	0.0	0.0		
55-	0.0	0.0		
60-	0.0	0.0		
65-	0.0	7.9		
70-	0.0	0.0		
75-	0.0	0.0		
80-	0.0	0.0		
85+	0.0	0.0		
Crude rate	0.0	0.3		



Number of deaths - three last periods

Sex	Period	Age group			Total	Yearly average
		0-49	50-69	70+		
Male	1993-96	1	5	27	33	8
	1997-00	1	10	22	33	8
	2001-03	0	4	19	23	8
Female	1993-96	0	4	12	16	4
	1997-00	0	0	12	12	3
	2001-03	0	1	12	13	4
Total	Total	2	24	105	130	12

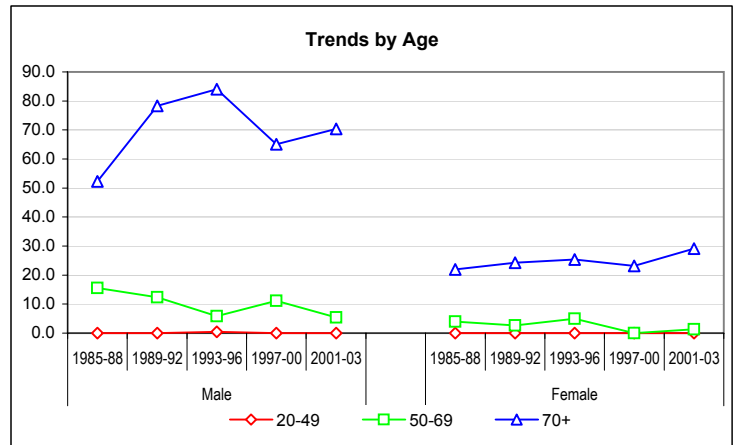


Crude rates by age-group & mean annual trends

*, **: Significant variations cf. Mantel-Haenszel test (95%, 99%)
Signification of mean annual trends not computed

Sex	Period	0-19	20-49	50-69	70+
Male	1985-88	0.00	0.00	15.52	52.30
	1989-92	0.00	0.00	12.35	78.29
	1993-96	0.00	0.47	5.81	84.08
	1997-00	0.79	0.00	11.14	65.06
	2001-03	0.00	0.00	5.36	70.42
Female	1985-88	0.00	0.00	4.00	21.97
	1989-92	0.00	0.00	2.60	24.29
	1993-96	0.00	0.00	4.95	25.37
	1997-00	0.00	0.00	0.00 *	23.19
	2001-03	0.00	0.00	1.37	29.13
Male	Annual trend		0.371	0.998	0.973
Female	Annual trend		1.031	0.751	1.018

(3 last periods)

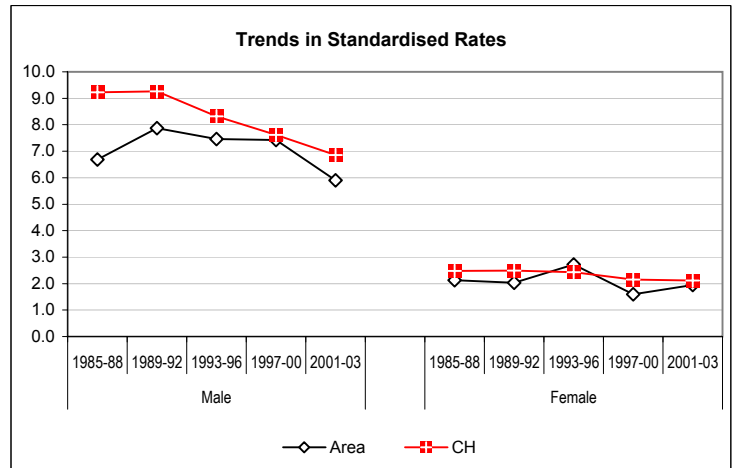


European standardized rate by period

Sex	Period	Area	CH	C.I. 95% of Area	
				Lower	Upper
Male	1985-88	6.69	9.23	4.3	9.9
	1989-92	7.87	9.26	5.4	11.1
	1993-96	7.46	8.31	5.1	10.5
	1997-00	7.42	7.62	5.1	10.5
	2001-03	5.90	6.86	3.7	8.9
Female	1985-88	2.13	2.48	1.1	3.8
	1989-92	2.03	2.49	1.0	3.5
	1993-96	2.72	2.43	1.5	4.6
	1997-00	1.60	2.15	1.5	4.6
	2001-03	1.94	2.11	0.8	2.8
Male	Annual trend	0.969	0.973		
Female	Annual trend	0.949	0.980		

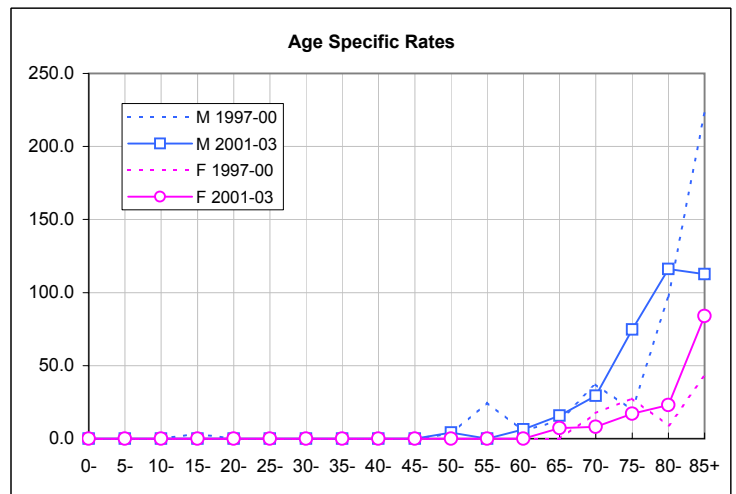
(3 last periods)

Area Fribourg
CH Whole Switzerland



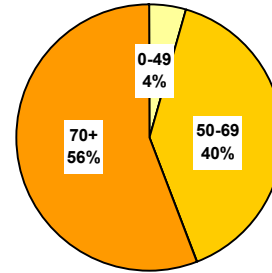
Age specific rates - last periods compared

Age	M		F	
	1997-00	2001-03	1997-00	2001-03
0-	0.0	0.0	0.0	0.0
5-	0.0	0.0	0.0	0.0
10-	0.0	0.0	0.0	0.0
15-	3.3	0.0	0.0	0.0
20-	0.0	0.0	0.0	0.0
25-	0.0	0.0	0.0	0.0
30-	0.0	0.0	0.0	0.0
35-	0.0	0.0	0.0	0.0
40-	0.0	0.0	0.0	0.0
45-	0.0	0.0	0.0	0.0
50-	3.2	4.1	0.0	0.0
55-	24.7	0.0	0.0	0.0
60-	5.4	6.2	0.0	0.0
65-	12.5	15.8	0.0	7.2
70-	37.2	29.3	17.5	8.0
75-	19.6	74.8	27.5	17.1
80-	97.3	116.2	9.3	23.1
85+	223.0	112.5	42.8	83.9
Crude rate	7.1	6.4	2.6	3.6



Number of deaths - three last periods

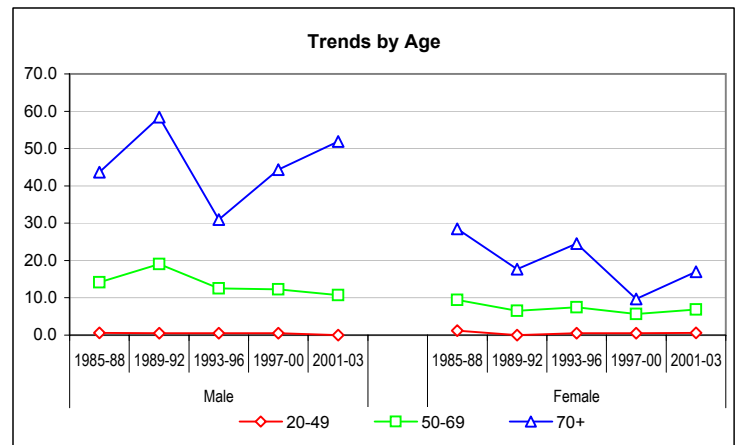
Sex	Period	Age group			Total	Yearly average
		0-49	50-69	70+		
Male	1993-96	1	10	10	21	5
	1997-00	1	11	15	27	7
	2001-03	0	8	14	22	7
Female	1993-96	1	6	12	19	5
	1997-00	1	5	5	11	3
	2001-03	1	5	7	13	4
Total	Total	5	45	63	113	10



Crude rates by age-group & mean annual trends

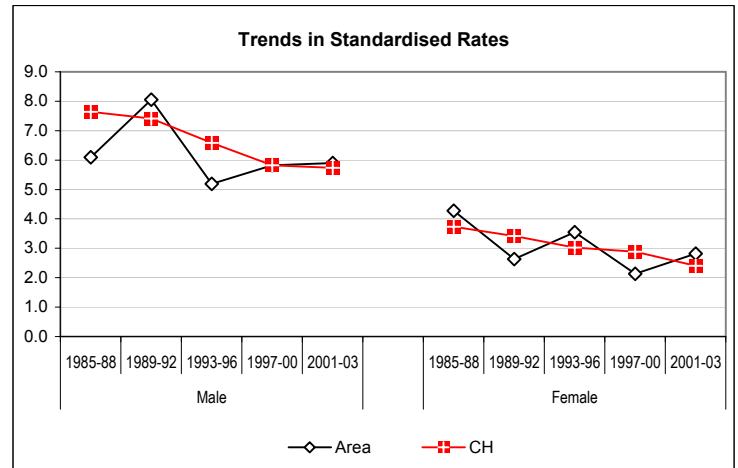
*, **: Significant variations cf. Mantel-Haenszel test (95%, 99%)
Signification of mean annual trends not computed

Sex	Period	0-19	20-49	50-69	70+
Male	1985-88	0.00	0.56	14.16	43.67
	1989-92	0.00	0.50	19.04	58.40
	1993-96	0.00	0.47	12.53	30.97
	1997-00	0.00	0.47	12.25	44.36
	2001-03	0.00	0.00	10.72	51.89
Female	1985-88	0.00	1.19	9.43	28.47
	1989-92	0.00	0.00	6.55	17.65
	1993-96	0.00	0.50	7.44	24.57
	1997-00	0.00	0.49	5.63	9.66
	2001-03	0.00	0.62	6.84	16.99
Male	Annual trend		0.407	0.979	1.077
Female	Annual trend		1.031	0.985	0.939



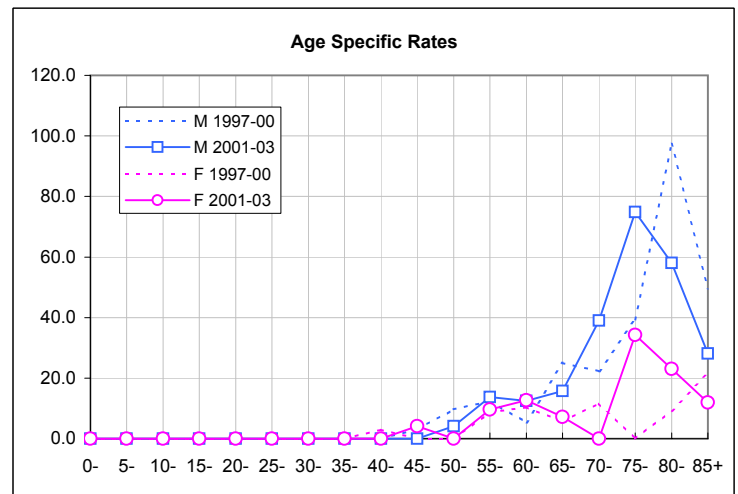
European standardized rate by period

Sex	Period	Area	CH	C.I. 95% of Area	
				Lower	Upper
Male	1985-88	6.10	7.64	3.9	9.1
	1989-92	8.05	7.41	5.5	11.4
	1993-96	5.19	6.59	3.2	8.0
	1997-00	5.83	5.83	3.8	8.5
	2001-03	5.90	5.73	3.7	9.0
Female	1985-88	4.28	3.73	2.6	6.7
	1989-92	2.64	3.42	1.3	4.6
	1993-96	3.55	3.03	2.1	5.6
	1997-00	2.14	2.89	2.1	5.6
	2001-03	2.82	2.40	1.0	3.9
Male	Annual trend	1.019	0.980		
Female	Annual trend	0.963	0.969		



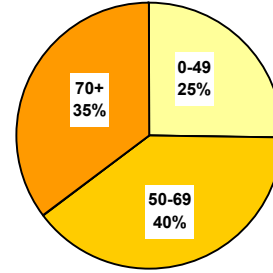
Age specific rates - last periods compared

Age	M		F	
	1997-00	2001-03	1997-00	2001-03
0-	0.0	0.0	0.0	0.0
5-	0.0	0.0	0.0	0.0
10-	0.0	0.0	0.0	0.0
15-	0.0	0.0	0.0	0.0
20-	0.0	0.0	0.0	0.0
25-	0.0	0.0	0.0	0.0
30-	0.0	0.0	0.0	0.0
35-	0.0	0.0	0.0	0.0
40-	0.0	0.0	3.0	0.0
45-	3.0	0.0	0.0	4.1
50-	9.7	4.1	0.0	0.0
55-	12.3	13.8	8.7	9.6
60-	5.4	12.5	10.4	12.7
65-	25.0	15.8	5.7	7.2
70-	22.3	39.0	11.7	0.0
75-	39.3	74.8	0.0	34.2
80-	97.3	58.1	9.3	23.1
85+	49.6	28.1	21.4	12.0
Crude rate	5.8	6.1	2.4	3.6



Number of deaths - three last periods

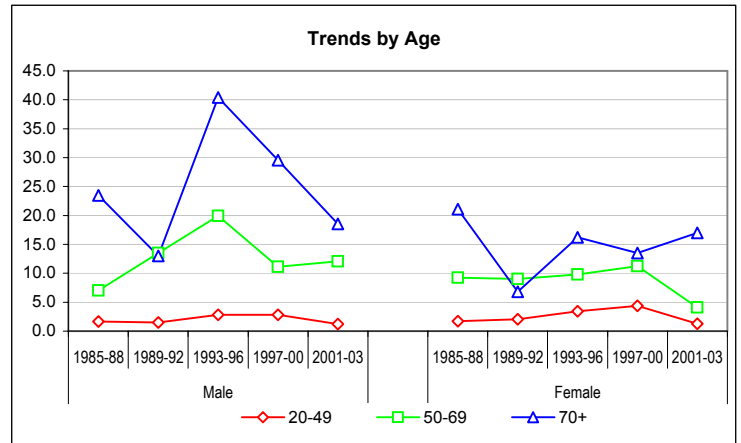
Sex	Period	Age group			Total	Yearly average
		0-49	50-69	70+		
Male	1993-96	7	16	13	36	9
	1997-00	6	10	10	26	7
	2001-03	2	9	5	16	5
Female	1993-96	8	8	8	24	6
	1997-00	9	10	7	26	7
	2001-03	4	3	7	14	5
Total	Total	36	56	50	142	13



Crude rates by age-group & mean annual trends

*, **: Significant variations cf. Mantel-Haenszel test (95%, 99%)
Signification of mean annual trends not computed

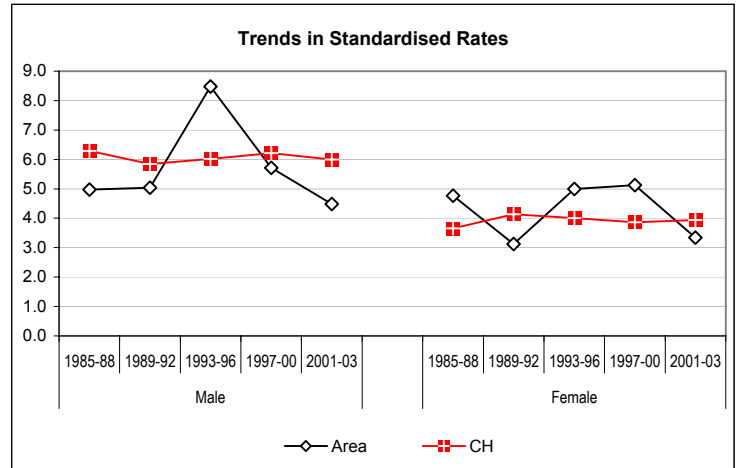
Sex	Period	0-19	20-49	50-69	70+
Male	1985-88	2.73	1.67	7.05	23.45
	1989-92	1.79	1.51	13.49	13.01
	1993-96	0.84	2.84	19.92	40.38 *
	1997-00	0.00	2.83	11.14	29.57
	2001-03	0.00	1.22	12.06	18.53
Female	1985-88	1.84	1.73	9.26	21.06 *
	1989-92	0.00	2.07	9.03	6.80
	1993-96	0.86	3.41	9.79	16.24
	1997-00	0.00	4.38	11.25	13.53
	2001-03	2.20	1.25	4.10	16.99
Male	Annual trend		0.893	0.927	0.896
Female	Annual trend		0.876	0.891	1.004



European standardized rate by period

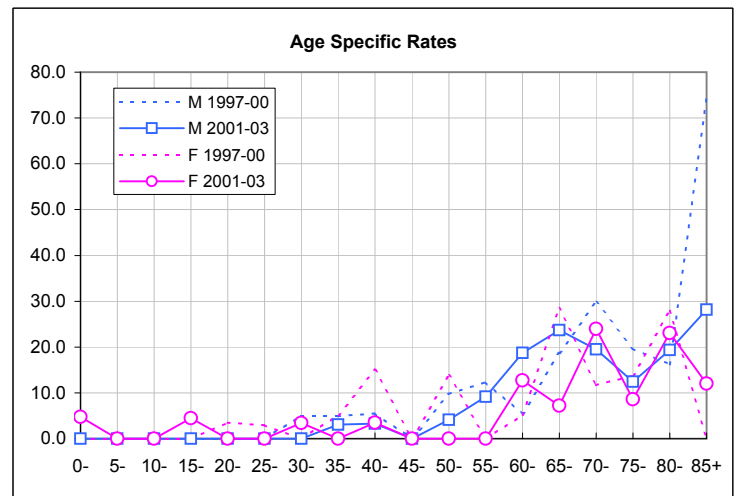
Sex	Period	Area	CH	C.I. 95% of Area	
				Lower	Upper
Male	1985-88	4.97	6.29	2.9	7.9
	1989-92	5.03	5.84	3.0	7.9
	1993-96	8.48	6.02	5.9	11.8
	1997-00	5.71	6.21	3.7	8.4
	2001-03	4.48	6.00	2.5	7.3
Female	1985-88	4.77	3.66	2.9	7.4
	1989-92	3.13	4.14	1.7	5.3
	1993-96	5.00	4.00	3.1	7.6
	1997-00	5.13	3.86	3.1	7.6
	2001-03	3.34	3.93	3.3	7.6
Male	Annual trend	0.913	1.000		
Female	Annual trend	0.947	0.997		

Area Fribourg
CH Whole Switzerland



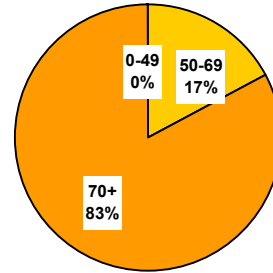
Age specific rates - last periods compared

Age	M		F	
	1997-00	2001-03	1997-00	2001-03
0-	0.0	0.0	0.0	4.7
5-	0.0	0.0	0.0	0.0
10-	0.0	0.0	0.0	0.0
15-	0.0	0.0	0.0	4.5
20-	0.0	0.0	3.5	0.0
25-	0.0	0.0	3.0	0.0
30-	5.0	0.0	0.0	3.4
35-	4.9	3.1	5.2	0.0
40-	5.5	3.3	14.9	3.5
45-	0.0	0.0	0.0	0.0
50-	9.7	4.1	13.8	0.0
55-	12.3	9.2	0.0	0.0
60-	5.4	18.7	5.2	12.7
65-	18.7	23.7	28.5	7.2
70-	29.8	19.5	11.7	24.0
75-	19.6	12.5	13.8	8.6
80-	16.2	19.4	27.9	23.1
85+	74.3	28.1	0.0	12.0
Crude rate	5.6	4.4	5.6	3.8



Number of deaths - three last periods

Sex	Period	Age group			Total	Yearly average
		0-49	50-69	70+		
Male	1993-96	0	2	1	3	1
	1997-00	0	0	3	3	1
	2001-03	0	0	2	2	1
Female	1993-96	0	1	6	7	2
	1997-00	0	1	3	4	1
	2001-03	0	0	5	5	2
Total	Total	0	4	20	24	2

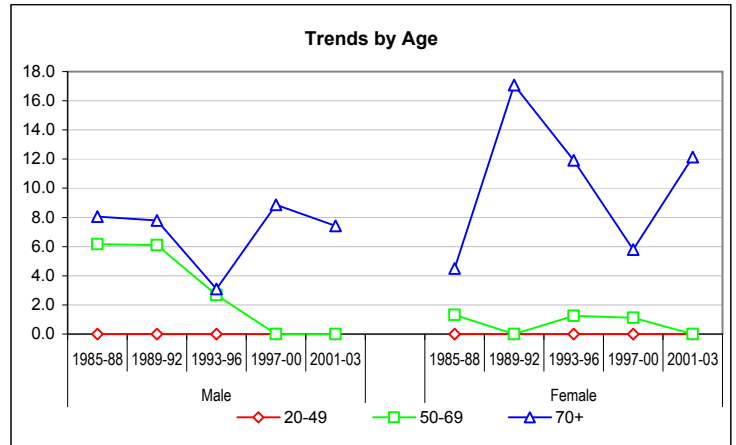


Crude rates by age-group & mean annual trends

*, **: Significant variations cf. Mantel-Haenszel test (95%, 99%)
Signification of mean annual trends not computed

Sex	Period	0-19	20-49	50-69	70+
Male	1985-88	0.00	0.00	6.16	8.07
	1989-92	0.00	0.00	6.11	7.79
	1993-96	0.00	0.00	2.68	3.10
	1997-00	0.00	0.00	0.00	8.87
	2001-03	0.00	0.00	0.00	7.42
Female	1985-88	0.00	0.00	1.32	4.51
	1989-92	0.00	0.00	0.00	17.08
	1993-96	0.00	0.00	1.24	11.92
	1997-00	0.00	0.00	1.13	5.80
	2001-03	0.00	0.00	0.00	12.14
Male	Annual trend		1.035	0.322	1.141
Female	Annual trend		1.031	0.398	0.993

(3 last periods)

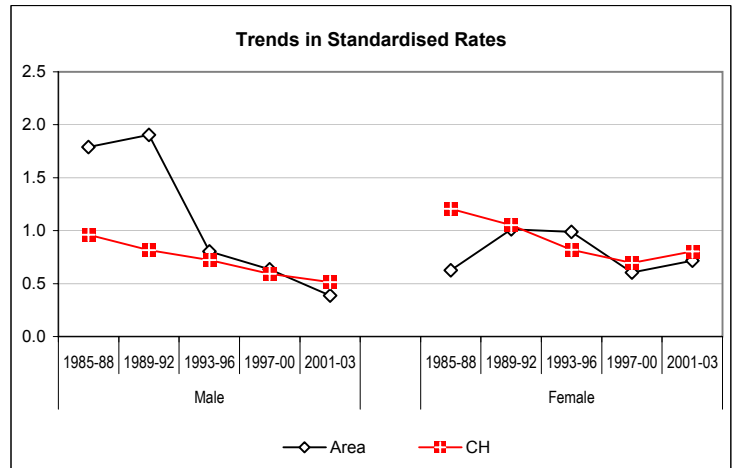


European standardized rate by period

Sex	Period	Area	CH	C.I. 95% of Area	
				Lower	Upper
Male	1985-88	1.79	0.96	0.7	3.8
	1989-92	1.91	0.82	0.7	4.0
	1993-96	0.80	0.72	0.2	2.3
	1997-00	0.63	0.59	0.1	1.9
	2001-03	0.39	0.51	0.0	1.4
Female	1985-88	0.62	1.21	0.1	1.9
	1989-92	1.01	1.05	0.4	2.1
	1993-96	0.99	0.82	0.4	2.1
	1997-00	0.60	0.70	0.4	2.1
	2001-03	0.72	0.80	0.1	1.6
Male	Annual trend	0.903	0.953		
Female	Annual trend	0.951	0.995		

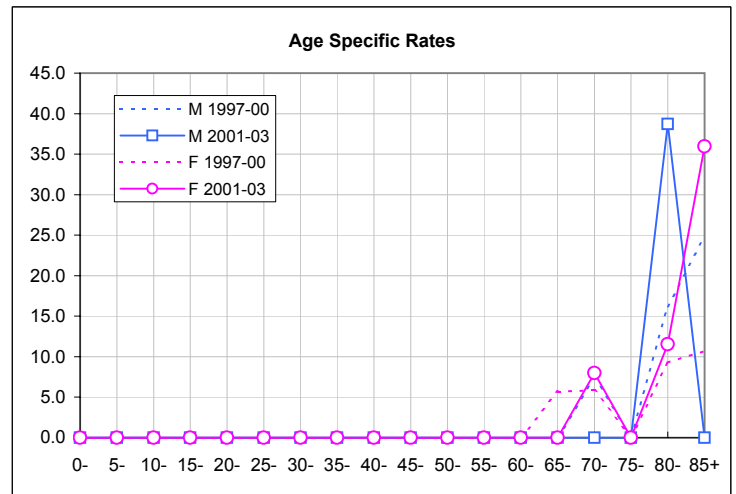
(3 last periods)

Area Fribourg
CH Whole Switzerland



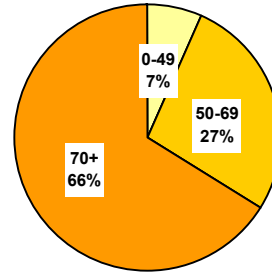
Age specific rates - last periods compared

Age	M		F	
	1997-00	2001-03	1997-00	2001-03
0-	0.0	0.0	0.0	0.0
5-	0.0	0.0	0.0	0.0
10-	0.0	0.0	0.0	0.0
15-	0.0	0.0	0.0	0.0
20-	0.0	0.0	0.0	0.0
25-	0.0	0.0	0.0	0.0
30-	0.0	0.0	0.0	0.0
35-	0.0	0.0	0.0	0.0
40-	0.0	0.0	0.0	0.0
45-	0.0	0.0	0.0	0.0
50-	0.0	0.0	0.0	0.0
55-	0.0	0.0	0.0	0.0
60-	0.0	0.0	0.0	0.0
65-	0.0	0.0	0.0	0.0
70-	7.4	0.0	5.8	8.0
75-	0.0	0.0	0.0	0.0
80-	16.2	38.7	9.3	11.5
85+	24.8	0.0	10.7	36.0
Crude rate	0.6	0.6	0.9	1.4



Number of deaths - three last periods

Sex	Period	Age group			Total	Yearly average
		0-49	50-69	70+		
Male	1993-96	1	10	18	29	7
	1997-00	2	5	21	28	7
	2001-03	3	6	14	23	8
Female	1993-96	2	6	20	28	7
	1997-00	2	8	18	28	7
	2001-03	0	7	10	17	6
Total	Total	10	42	101	153	14

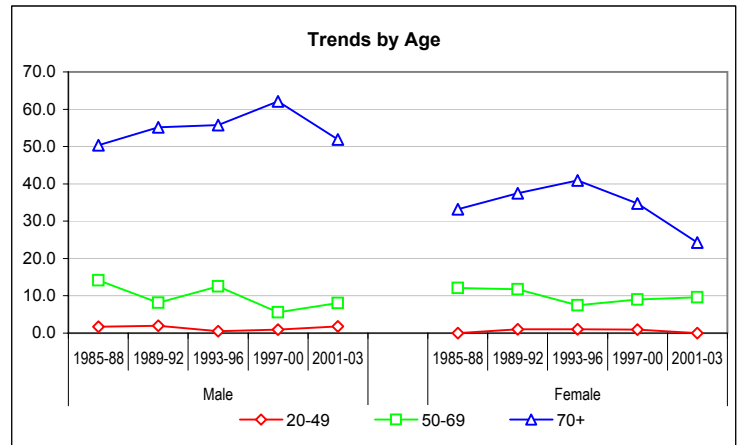


Crude rates by age-group & mean annual trends

*, **: Significant variations cf. Mantel-Haenszel test (95%, 99%)
Signification of mean annual trends not computed

Sex	Period	0-19	20-49	50-69	70+
Male	1985-88	0.91	1.67	14.16	50.39
	1989-92	0.00	2.01	8.16	55.16
	1993-96	0.00	0.47	12.53	55.74
	1997-00	0.00	0.94	5.57	62.10
	2001-03	0.00	1.84	8.04	51.89
Female	1985-88	0.00	0.00	12.12 *	33.21
	1989-92	0.00	1.07	11.79	37.50
	1993-96	0.00	0.99	7.44	40.95
	1997-00	0.00	0.98	9.00	34.78
	2001-03	0.00	0.00	9.57	24.28
Male	Annual trend		1.212	0.932	0.992
Female	Annual trend		0.369	1.037	0.930

(3 last periods)

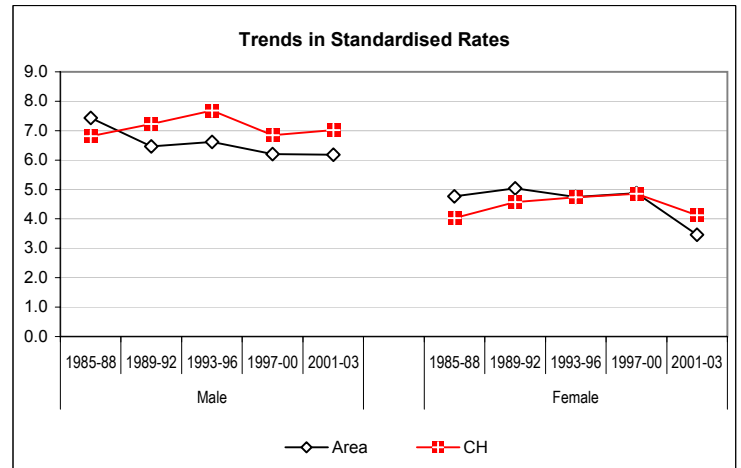


European standardized rate by period

Sex	Period	Area	CH	C.I. 95% of Area	
Male	1985-88	7.44	6.81	4.9	10.8
	1989-92	6.47	7.23	4.2	9.5
	1993-96	6.61	7.68	4.4	9.6
	1997-00	6.21	6.84	4.1	9.0
	2001-03	6.18	7.02	3.9	9.3
Female	1985-88	4.77	4.02	2.9	7.3
	1989-92	5.04	4.57	3.3	7.4
	1993-96	4.75	4.73	3.1	7.0
	1997-00	4.87	4.86	3.1	7.0
	2001-03	3.46	4.13	3.2	7.2
Male	Annual trend	0.990	0.986		
Female	Annual trend	0.959	0.982		

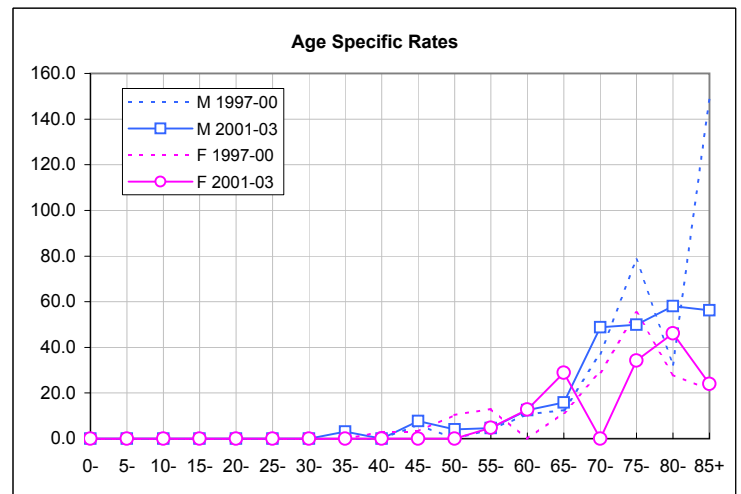
(3 last periods)

Area Fribourg
CH Whole Switzerland



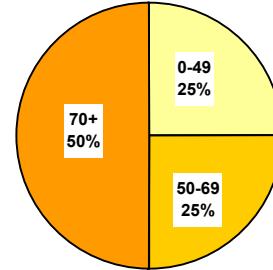
Age specific rates - last periods compared

Age	M		F	
	1997-00	2001-03	1997-00	2001-03
0-	0.0	0.0	0.0	0.0
5-	0.0	0.0	0.0	0.0
10-	0.0	0.0	0.0	0.0
15-	0.0	0.0	0.0	0.0
20-	0.0	0.0	0.0	0.0
25-	0.0	0.0	0.0	0.0
30-	0.0	0.0	0.0	0.0
35-	0.0	3.1	0.0	0.0
40-	0.0	0.0	3.0	0.0
45-	6.1	7.7	3.3	0.0
50-	0.0	4.1	10.3	0.0
55-	4.1	4.6	13.0	4.8
60-	10.7	12.5	0.0	12.7
65-	12.5	15.8	11.4	28.8
70-	37.2	48.8	29.2	0.0
75-	78.6	49.9	55.0	34.2
80-	32.4	58.1	27.9	46.1
85+	148.7	56.3	21.4	24.0
Crude rate	6.1	6.4	6.0	4.6



Number of deaths - three last periods

Sex	Period	Age group			Total	Yearly average
		0-49	50-69	70+		
Male	1993-96	1	0	1	2	1
	1997-00	0	1	0	1	0
	2001-03	0	1	0	1	0
Female	1993-96	0	0	0	0	0
	1997-00	1	0	1	2	1
	2001-03	0	0	2	2	1
Total	Total	2	2	4	8	1

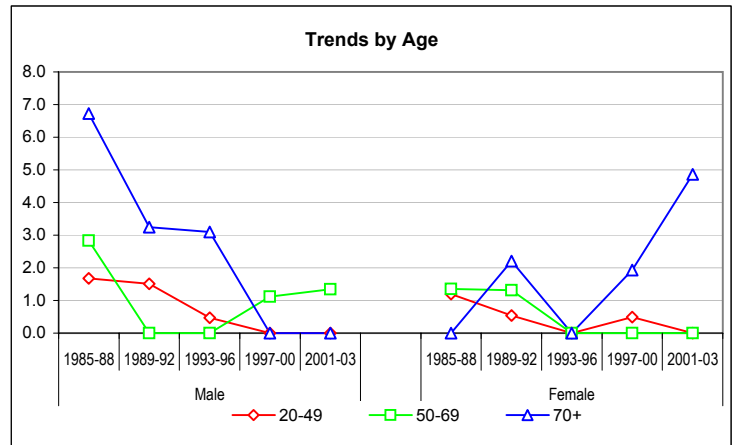


Crude rates by age-group & mean annual trends

*, **: Significant variations cf. Mantel-Haenszel test (95%, 99%)
Signification of mean annual trends not computed

Sex	Period	0-19	20-49	50-69	70+
Male	1985-88	0.00	1.67	2.83	6.72
	1989-92	0.00	1.51	0.00	3.25
	1993-96	0.00	0.47	0.00	3.10
	1997-00	0.00	0.00	1.12	0.00
	2001-03	0.00	0.00	1.34	0.00
Female	1985-88	0.00	1.19	1.35	0.00
	1989-92	0.00	0.54	1.31	2.21
	1993-96	0.00	0.00	0.00	0.00
	1997-00	0.00	0.49	0.00	1.94
	2001-03	0.00	0.00	0.00	4.86
Male	Annual trend		0.371	2.814	0.367
Female	Annual trend		1.132	1.012	3.136

(3 last periods)

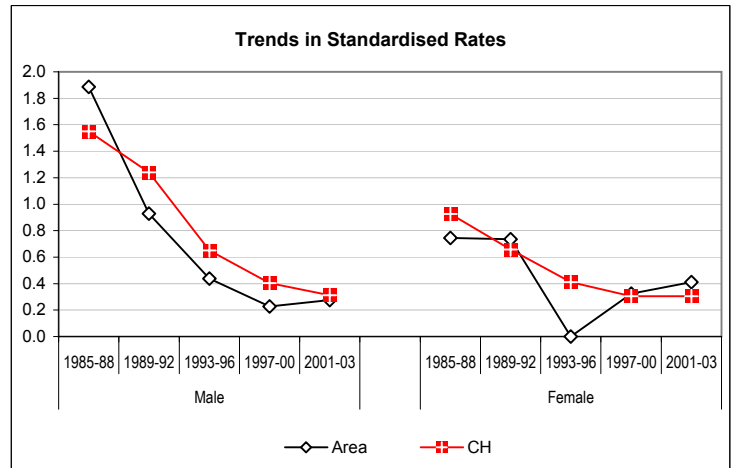


European standardized rate by period

Sex	Period	Area	CH	C.I. 95% of Area	
				Lower	Upper
Male	1985-88	1.89	1.55	0.7	3.9
	1989-92	0.93	1.24	0.2	2.4
	1993-96	0.44	0.65	0.0	1.6
	1997-00	0.23	0.40	0.0	1.3
	2001-03	0.28	0.31	0.0	1.6
Female	1985-88	0.74	0.93	0.1	2.2
	1989-92	0.73	0.66	0.1	2.2
	1993-96	0.00	0.41	0.0	0.0
	1997-00	0.32	0.30	0.0	0.0
	2001-03	0.41	0.30	0.0	1.3
Male	Annual trend	0.931	0.899		
Female	Annual trend	#####	0.956		

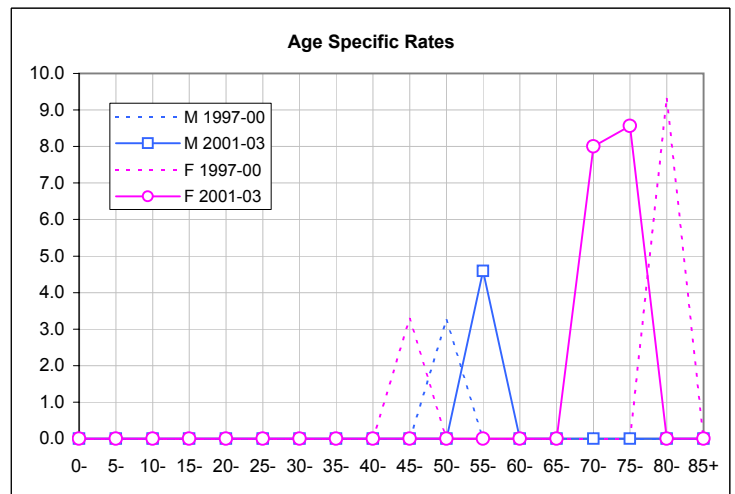
(3 last periods)

Area Fribourg
CH Whole Switzerland



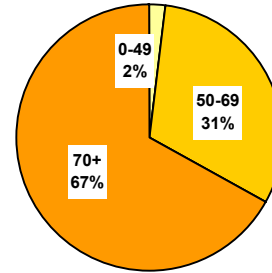
Age specific rates - last periods compared

Age	M		F	
	1997-00	2001-03	1997-00	2001-03
0-	0.0	0.0	0.0	0.0
5-	0.0	0.0	0.0	0.0
10-	0.0	0.0	0.0	0.0
15-	0.0	0.0	0.0	0.0
20-	0.0	0.0	0.0	0.0
25-	0.0	0.0	0.0	0.0
30-	0.0	0.0	0.0	0.0
35-	0.0	0.0	0.0	0.0
40-	0.0	0.0	0.0	0.0
45-	0.0	0.0	3.3	0.0
50-	3.2	0.0	0.0	0.0
55-	0.0	4.6	0.0	0.0
60-	0.0	0.0	0.0	0.0
65-	0.0	0.0	0.0	0.0
70-	0.0	0.0	0.0	8.0
75-	0.0	0.0	0.0	8.6
80-	0.0	0.0	9.3	0.0
85+	0.0	0.0	0.0	0.0
Crude rate	0.2	0.3	0.4	0.5



Number of deaths - three last periods

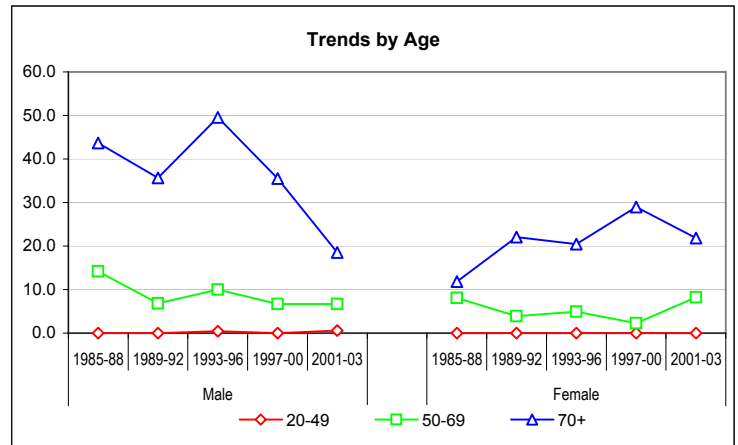
Sex	Period	Age group			Total	Yearly average
		0-49	50-69	70+		
Male	1993-96	1	8	16	25	6
	1997-00	0	6	12	18	5
	2001-03	1	5	5	11	4
Female	1993-96	0	4	10	14	4
	1997-00	0	2	15	17	4
	2001-03	0	6	9	15	5
Total	Total	2	31	67	100	9



Crude rates by age-group & mean annual trends

*, **: Significant variations cf. Mantel-Haenszel test (95%, 99%)
Signification of mean annual trends not computed

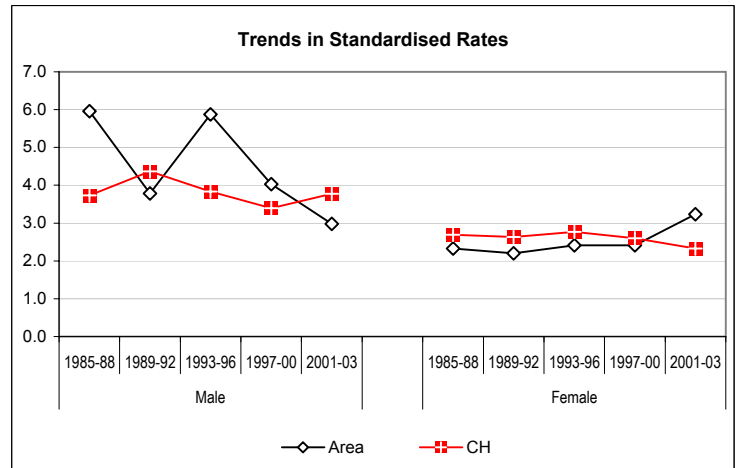
Sex	Period	0-19	20-49	50-69	70+
Male	1985-88	0.00	0.00	14.16	43.67
	1989-92	0.00	0.00	6.80	35.69
	1993-96	0.00	0.47	10.02	49.55
	1997-00	0.00	0.00	6.68	35.49
	2001-03	0.00	0.61	6.70	18.53
Female	1985-88	0.00	0.00	8.08	11.86
	1989-92	0.00	0.00	3.93	22.06
	1993-96	0.00	0.00	4.96	20.48
	1997-00	0.00	0.00	2.25	28.99
	2001-03	0.00	0.00	8.21	21.85
Male	Annual trend		0.943	0.942	0.872
Female	Annual trend		1.031	1.059	1.014



European standardized rate by period

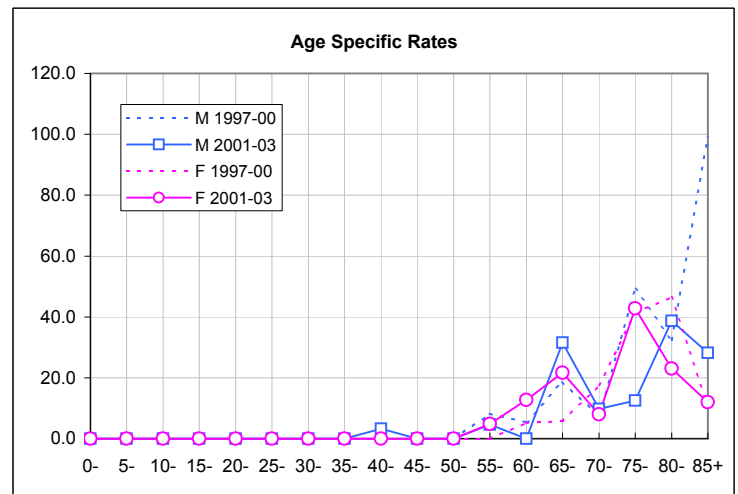
Sex	Period	Area	CH	C.I. 95% of Area	
				Lower	Upper
Male	1985-88	5.96	3.74	3.7	9.0
	1989-92	3.78	4.37	2.1	6.2
	1993-96	5.88	3.84	3.8	8.7
	1997-00	4.03	3.39	2.4	6.4
	2001-03	2.98	3.77	1.5	5.4
Female	1985-88	2.32	2.69	1.1	4.2
	1989-92	2.20	2.63	1.1	3.9
	1993-96	2.41	2.77	1.2	4.2
	1997-00	2.41	2.59	1.2	4.2
	2001-03	3.24	2.32	1.3	3.9
Male	Annual trend	0.908	0.996		
Female	Annual trend	1.040	0.976		

Area Fribourg
CH Whole Switzerland



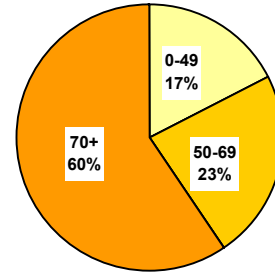
Age specific rates - last periods compared

Age	M		F	
	1997-00	2001-03	1997-00	2001-03
0-	0.0	0.0	0.0	0.0
5-	0.0	0.0	0.0	0.0
10-	0.0	0.0	0.0	0.0
15-	0.0	0.0	0.0	0.0
20-	0.0	0.0	0.0	0.0
25-	0.0	0.0	0.0	0.0
30-	0.0	0.0	0.0	0.0
35-	0.0	0.0	0.0	0.0
40-	0.0	3.3	0.0	0.0
45-	0.0	0.0	0.0	0.0
50-	0.0	0.0	0.0	0.0
55-	8.2	4.6	0.0	4.8
60-	5.4	0.0	5.2	12.7
65-	18.7	31.6	5.7	21.6
70-	7.4	9.8	17.5	8.0
75-	49.1	12.5	41.3	42.8
80-	32.4	38.7	46.5	23.1
85+	99.1	28.1	10.7	12.0
Crude rate	3.9	3.1	3.6	4.1



Number of deaths - three last periods

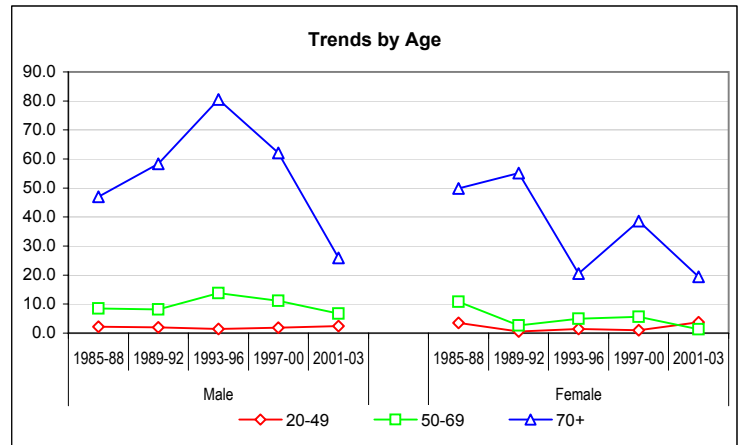
Sex	Period	Age group			Total	Yearly average
		0-49	50-69	70+		
Male	1993-96	4	11	26	41	10
	1997-00	4	10	21	35	9
	2001-03	7	5	7	19	6
Female	1993-96	3	4	10	17	4
	1997-00	2	5	20	27	7
	2001-03	7	1	8	16	5
Total	Total	27	36	92	155	14



Crude rates by age-group & mean annual trends

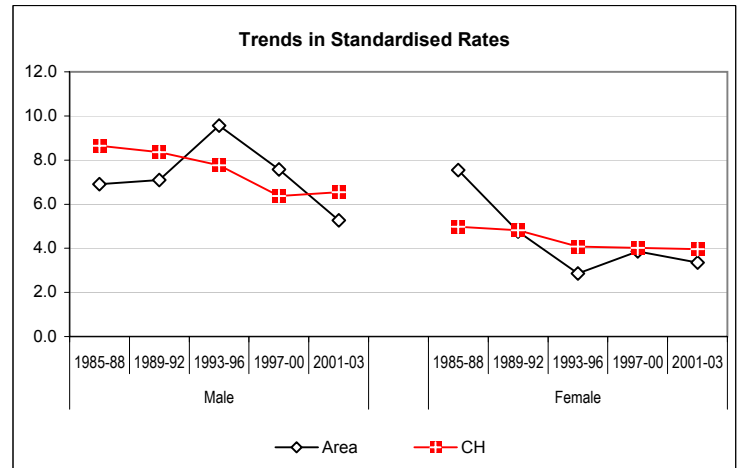
*, **: Significant variations cf. Mantel-Haenszel test (95%, 99%)
Signification of mean annual trends not computed

Sex	Period	0-19	20-49	50-69	70+
Male	1985-88	0.91	2.23	8.49	47.03
	1989-92	1.79	2.01	8.16	58.40
	1993-96	0.84	1.42	13.78	80.51
	1997-00	0.00	1.89	11.14	62.10
	2001-03	3.16	2.45	6.70	25.95 *
Female	1985-88	0.95	3.58	10.78	49.81
	1989-92	1.89	0.54 *	2.62	55.15
	1993-96	0.00	1.49	4.96	20.48 **
	1997-00	0.00	0.98	5.63	38.65
	2001-03	1.10	3.74	1.37	19.42
Male	Annual trend		1.081	0.905	0.855
Female	Annual trend		1.126	0.842	1.001



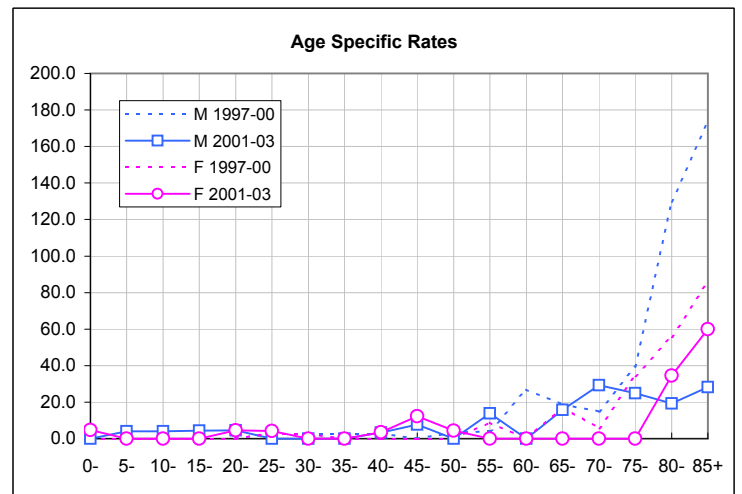
European standardized rate by period

Sex	Period	Area	CH	C.I. 95% of Area	
Male	1985-88	6.90	8.65	4.4	10.3
	1989-92	7.09	8.35	4.7	10.2
	1993-96	9.56	7.76	6.8	13.0
	1997-00	7.58	6.37	5.2	10.6
	2001-03	5.26	6.54	3.1	8.2
Female	1985-88	7.54	4.98	5.1	10.6
	1989-92	4.75	4.81	3.1	6.9
	1993-96	2.85	4.08	1.6	4.7
	1997-00	3.87	4.02	1.6	4.7
	2001-03	3.35	3.95	2.5	5.8
Male	Annual trend	0.920	0.974		
Female	Annual trend	1.026	0.995		



Age specific rates - last periods compared

Age	M		F	
	1997-00	2001-03	1997-00	2001-03
0-	0.0	0.0	0.0	4.7
5-	0.0	4.0	0.0	0.0
10-	0.0	4.0	0.0	0.0
15-	0.0	4.4	0.0	0.0
20-	0.0	4.5	0.0	4.6
25-	3.0	0.0	3.0	4.1
30-	2.5	0.0	2.5	0.0
35-	2.5	0.0	0.0	0.0
40-	2.8	3.3	0.0	3.5
45-	0.0	7.7	0.0	12.3
50-	3.2	0.0	0.0	4.4
55-	4.1	13.8	8.7	0.0
60-	26.8	0.0	0.0	0.0
65-	18.7	15.8	17.1	0.0
70-	14.9	29.3	5.8	0.0
75-	39.3	24.9	34.4	0.0
80-	129.8	19.4	55.8	34.6
85+	173.4	28.1	85.6	59.9
Crude rate	7.6	5.3	5.8	4.4



END