

Swiss Association of Cancer Registries

# Cancer in Switzerland

Volume 2 - Statistics of Mortality

1985 - 2003

*Statistics and design*

Pierre Pury

*Epidemiologic concepts*

Jean-Michel Lutz

*Causes of death register*

*Swiss Federal Statistical Office*

Christoph Junker  
Monika Diebold

*Coordinates*

[www.asrt.ch](http://www.asrt.ch)  
[www.bfs.admin.ch](http://www.bfs.admin.ch)

April 2006

# Table of Contents

Introduction . . . . .	3
Population . . . . .	4
Summary	
Number of deaths . . . . .	5
Percentage distribution by site . . . . .	6
Age standardised rates, european population, per 100'000 . . . . .	7
Age standardised rates, world population, per 100'000 . . . . .	8
All malignant cancers . . . . .	9
Oral cavity & pharynx . . . . .	10
Oral cavity, pharynx, larynx . . . . .	11
Oesophagus . . . . .	12
Stomach . . . . .	13
Colon, rectum . . . . .	14
Liver & intrahepatic bile ducts . . . . .	15
Gallbladder & extrahepatic bile tract . . . . .	16
Pancreas . . . . .	17
Larynx . . . . .	18
Lung, trachea . . . . .	19
Pleura . . . . .	20
Bones, joints, cartilage . . . . .	21
Soft tissues . . . . .	22
Skin melanoma . . . . .	23
Breast . . . . .	24
Cervix uteri . . . . .	25
Corpus uteri . . . . .	26
Ovary . . . . .	27
Prostate . . . . .	28
Testis . . . . .	29
Bladder . . . . .	30
Kidney & urinary organs . . . . .	31
Brain & central nerves . . . . .	32
Thyroid . . . . .	33
Non Hodgkin lymphoma . . . . .	34
Hodgkin's disease . . . . .	35
Multiple myeloma . . . . .	36
Leukaemia . . . . .	37

# Introduction

## *Principle*

The present document shows the tables and figures of number of deaths and of mortality rates, based on the data collected by the Swiss Federal Statistical Office. Some comparisons are done with values obtained for parts of the country. For more detailed geographic comparisons, please refer to Schüler & Bopp [1]. As the cause of death coding changed in 1995 from ICD8 to ICD10, some priority rules were modified accordingly in case of multi-pathology. In order to keep series comparable over the whole period, the data of the main cancers before 1995 were corrected by a factor usually comprised between 0.9 and 1 according to cancer, gender and age group. This acted as a statistical rejection of a small part of the counted death. The rejected cases would have been attributed to other groups of disease with the modern rules. The correction factors have been determined for the main cancers only [2] [3]. These are marked with an asterisk in the summary list. They totalise about 73% of all deaths by cancer. The others were not corrected and are suspicious of biases in the trends.

## *Presentation*

The various epidemiological indicators are regrouped for each cancer site, instead of being distributed in different documents. The new presentation permits generalised graphing of the results, especially useful when trends are considered. In such a way, each page contains a synthetic view of a cancer site or group. A list of 29 sites or groups has been retained. Other sites or more specific cancers, for instance restricted to precise morphology types, can be computed on demand and presented the same way.

## *Bibliography*

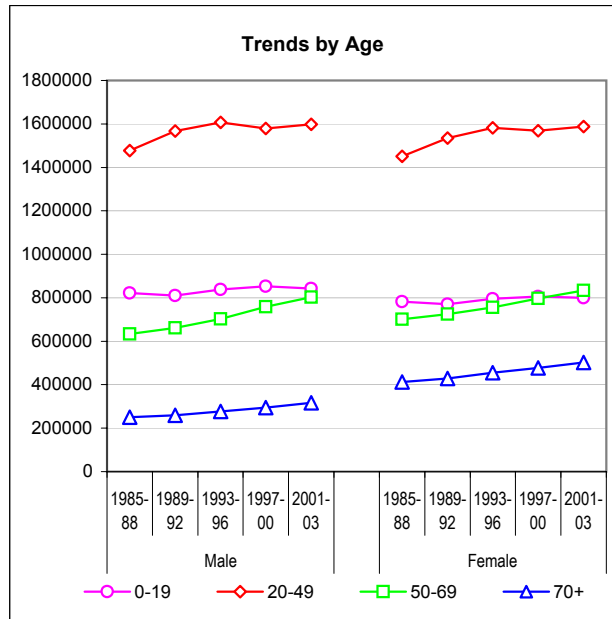
[1] Schüler G & Bopp M (1997). Atlas der Krebsmortalität in der Schweiz. Birkhäuser Verlag

[2] Lutz JM, Pury P, Fioretta G, Raymond L (2004). The impact of coding process on observed mortality trends in Switzerland. European Journal of Cancer Prevention.

[3] ] Lutz JM, Pury P, Fioretta G, Raymond L (2004). L'amélioration récente de la précision de la statistique de mortalité par cancer et son effet sur l'estimation des tendances chronologiques.

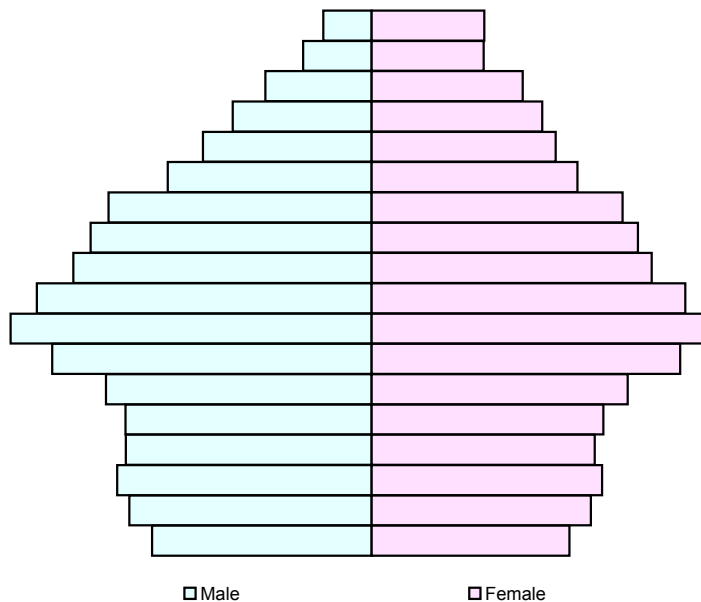
Annual population by age-group & mean annual trends

Sex	Period	0-19	20-49	50-69	70+	Total
Male	1985-88	822'228	1'476'684	632'818	250'580	3'182'310
	1989-92	810'570	1'567'416	661'838	259'741	3'299'565
	1993-96	837'992	1'606'782	702'844	276'593	3'424'211
	1997-00	852'543	1'578'739	758'157	293'912	3'483'351
	2001-03	842'168	1'597'947	802'410	316'580	3'559'106
Female	1985-88	782'188	1'451'280	700'540	411'930	3'345'937
	1989-92	770'917	1'534'424	725'389	428'337	3'459'067
	1993-96	794'899	1'582'141	754'982	454'918	3'586'939
	1997-00	806'214	1'568'057	797'032	477'183	3'648'485
	2001-03	799'894	1'588'615	833'247	502'606	3'724'362
Male	Annual trend	1.002	1.004	1.015	1.014	1.007
Female	Annual trend	1.002	1.005	1.011	1.012	1.006



Pyramid of ages - last period - yearly average

Age	2001-03	
	Male	Female
85+	42'247	103'667
80-84	59'872	103'169
75-79	92'963	138'962
70-74	121'499	156'808
65-69	147'540	169'255
60-64	178'566	189'133
55-59	230'391	230'302
50-54	245'913	244'557
45-49	261'089	257'121
40-44	293'095	287'960
35-39	316'099	312'254
30-34	279'785	283'390
25-29	232'558	235'001
20-24	215'321	212'890
15-19	215'042	204'953
10-14	222'745	211'552
5-9	212'125	201'498
0-4	192'256	181'890
Total	3'559'106	3'724'362



## Number of deaths

ICD10	Male	Site	Deaths by period					Total	Yearly average				
			1985-88	1989-92	1993-96	1997-00	2001-03		1985-88	1989-92	1993-96	1997-00	2001-03
C00-14	*	Oral Cavity & Pharynx	1'089	1'137	990	1'093	771	5'080	272	284	247	273	257
C15		Oesophagus	1'068	1'084	1'085	1'100	911	5'248	267	271	271	275	304
C16	*	Stomach	2'134	1'985	1'670	1'483	1'041	8'314	534	496	418	371	347
C18-21	*	Colon, Rectum	3'640	3'645	3'594	3'514	2'493	16'887	910	911	898	879	831
C22		Liver & Intrahepatic Bile Ducts	987	1'130	1'238	1'350	1'101	5'806	247	283	310	338	367
C23-24		Gallbladder & Extrahepatic Bile Tract	324	337	317	295	188	1'461	81	84	79	74	63
C25	*	Pancreas	1'495	1'640	1'611	1'605	1'366	7'716	374	410	403	401	455
C32	*	Larynx	407	412	330	302	242	1'693	102	103	83	76	81
C33-34	*	Lung, Trachea	8'770	8'610	8'101	7'958	5'967	39'405	2193	2152	2025	1990	1989
C38.4, C45.0		Pleura	273	323	318	268	238	1'420	68	81	80	67	79
C40-41		Bones, Joints, Cartilage	67	82	73	91	51	364	17	21	18	23	17
C47, C49		Soft Tissues	142	126	151	153	153	725	36	32	38	38	51
C43	*	Skin Melanoma	432	508	524	561	391	2'416	108	127	131	140	130
C50		Breast	34	48	39	39	19	179	9	12	10	10	6
C53		Cervix Uteri	-	-	-	-	-	-	-	-	-	-	-
C54-55		Corpus Uteri	-	-	-	-	-	-	-	-	-	-	-
C56		Ovary	-	-	-	-	-	-	-	-	-	-	-
C61	*	Prostate	4'257	4'651	5'050	5'211	3'903	23'072	1064	1163	1263	1303	1301
C62	*	Testis	107	84	64	69	40	364	27	21	16	17	13
C67	*	Bladder	1'222	1'303	1'246	1'221	891	5'883	306	326	311	305	297
C64-66, C68		Kidney & Urinary Organs	993	1'021	960	903	713	4'590	248	255	240	226	238
C70-72	*	Brain & Central Nerves	793	772	845	920	703	4'033	198	193	211	230	234
C73	*	Thyroid	127	114	104	93	66	505	32	29	26	23	22
C82-88		Non Hodgkin Lymphoma	900	1'009	1'142	1'074	881	5'006	225	252	286	269	294
C81		Hodgkin's Disease	205	174	98	62	40	579	51	44	25	16	13
C90		Multiple Myeloma	491	614	565	533	481	2'684	123	154	141	133	160
C91-95		Leukaemia	1'131	1'164	1'143	992	821	5'251	283	291	286	248	274
...		Others	1'986	1'946	2'385	2'872	2'097	11'286	496	487	596	718	699
C00-97	*	All malignant Cancers	33'074	33'919	33'643	33'762	25'568	159'966	8269	8480	8411	8441	8523

\* Cancers for which the numbers of deaths are corrected before 1995

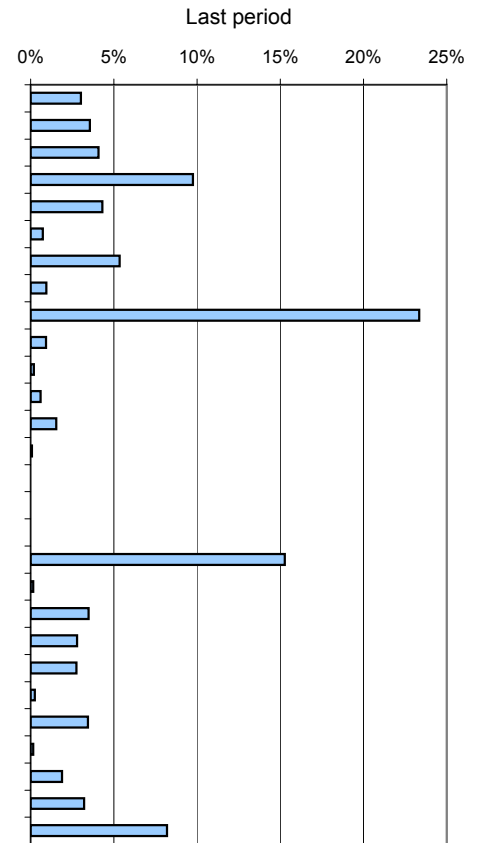
ICD10	Female	Site	Deaths by period					Total	Yearly average				
			1985-88	1989-92	1993-96	1997-00	2001-03		1985-88	1989-92	1993-96	1997-00	2001-03
C00-14	*	Oral Cavity & Pharynx	276	314	312	322	286	1'510	69	79	78	81	95
C15		Oesophagus	285	341	337	367	300	1'630	71	85	84	92	100
C16	*	Stomach	1'674	1'408	1'190	1'039	668	5'979	419	352	297	260	223
C18-21	*	Colon, Rectum	3'531	3'477	3'341	3'100	2'431	15'880	883	869	835	775	810
C22		Liver & Intrahepatic Bile Ducts	415	431	524	563	467	2'400	104	108	131	141	156
C23-24		Gallbladder & Extrahepatic Bile Tract	742	734	664	570	372	3'082	186	184	166	143	124
C25	*	Pancreas	1'533	1'673	1'630	1'838	1'383	8'057	383	418	407	460	461
C32	*	Larynx	38	56	43	49	41	227	10	14	11	12	14
C33-34	*	Lung, Trachea	1'589	1'892	2'382	2'759	2'321	10'943	397	473	595	690	774
C38.4, C45.0		Pleura	79	85	81	51	49	345	20	21	20	13	16
C40-41		Bones, Joints, Cartilage	58	52	57	72	51	290	15	13	14	18	17
C47, C49		Soft Tissues	146	119	151	195	144	755	37	30	38	49	48
C43	*	Skin Melanoma	393	429	385	406	301	1'914	98	107	96	102	100
C50	*	Breast	5'862	5'968	5'881	5'375	4'065	27'151	1466	1492	1470	1344	1355
C53	*	Cervix Uteri	669	605	538	366	265	2'443	167	151	134	92	88
C54-55	*	Corpus Uteri	1'027	1'068	924	802	599	4'420	257	267	231	201	200
C56	*	Ovary	1'733	1'788	1'658	1'600	1'249	8'028	433	447	415	400	416
C61		Prostate	-	-	-	-	-	-	-	-	-	-	-
C62		Testis	-	-	-	-	-	-	-	-	-	-	-
C67	*	Bladder	539	569	600	570	439	2'718	135	142	150	143	146
C64-66, C68		Kidney & Urinary Organs	687	665	631	657	426	3'066	172	166	158	164	142
C70-72	*	Brain & Central Nerves	552	649	678	692	545	3'116	138	162	169	173	182
C73	*	Thyroid	261	237	197	185	157	1'037	65	59	49	46	52
C82-88		Non Hodgkin Lymphoma	782	964	1'022	1'089	756	4'613	196	241	256	272	252
C81		Hodgkin's Disease	156	119	75	59	49	458	39	30	19	15	16
C90		Multiple Myeloma	524	545	619	590	434	2'712	131	136	155	148	145
C91-95		Leukaemia	923	960	875	902	687	4'347	231	240	219	226	229
...		Others	2'025	2'119	2'394	2'860	2'028	11'425	506	530	598	715	676
C00-97	*	All malignant Cancers	26'498	27'268	27'188	27'078	20'513	128'546	6625	6817	6797	6770	6838

\* Cancers for which the numbers of deaths are corrected before 1995

Percentage distribution by site

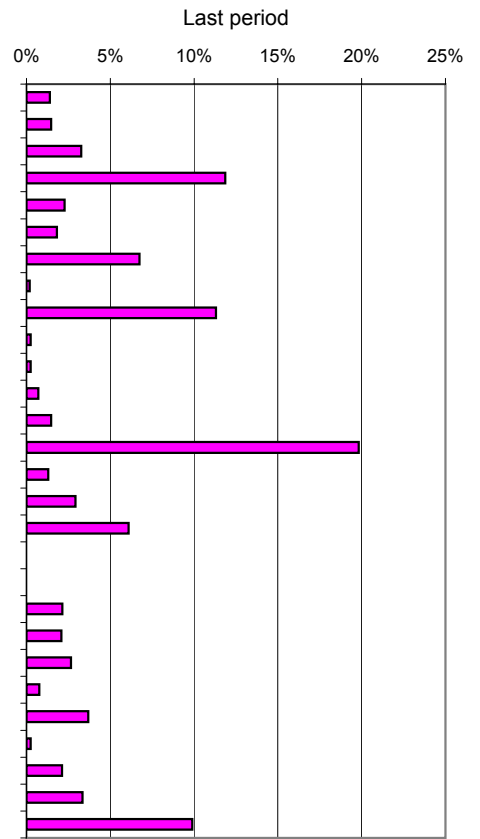
Male		1985-88	1989-92	1993-96	1997-00	2001-03
ICD10	Site					
C00-14	* Oral Cavity & Pharynx	3.3%	3.4%	2.9%	3.2%	3.0%
C15	Oesophagus	3.2%	3.2%	3.2%	3.3%	3.6%
C16	* Stomach	6.5%	5.9%	5.0%	4.4%	4.1%
C18-21	* Colon, Rectum	11.0%	10.7%	10.7%	10.4%	9.8%
C22	Liver & Intrahepatic Bile Ducts	3.0%	3.3%	3.7%	4.0%	4.3%
C23-24	Gallbladder & Extrahepatic Bile Tract	1.0%	1.0%	0.9%	0.9%	0.7%
C25	* Pancreas	4.5%	4.8%	4.8%	4.8%	5.3%
C32	* Larynx	1.2%	1.2%	1.0%	0.9%	0.9%
C33-34	* Lung, Trachea	26.5%	25.4%	24.1%	23.6%	23.3%
C38.4, C45.0	Pleura	0.8%	1.0%	0.9%	0.8%	0.9%
C40-41	Bones, Joints, Cartilage	0.2%	0.2%	0.2%	0.3%	0.2%
C47, C49	Soft Tissues	0.4%	0.4%	0.4%	0.5%	0.6%
C43	* Skin Melanoma	1.3%	1.5%	1.6%	1.7%	1.5%
C50	Breast	0.1%	0.1%	0.1%	0.1%	0.1%
C53	Cervix Uteri	-	-	-	-	-
C54-55	Corpus Uteri	-	-	-	-	-
C56	Ovary	-	-	-	-	-
C61	* Prostate	12.9%	13.7%	15.0%	15.4%	15.3%
C62	* Testis	0.3%	0.2%	0.2%	0.2%	0.2%
C67	* Bladder	3.7%	3.8%	3.7%	3.6%	3.5%
C64-66, C68	Kidney & Urinary Organs	3.0%	3.0%	2.9%	2.7%	2.8%
C70-72	* Brain & Central Nerves	2.4%	2.3%	2.5%	2.7%	2.7%
C73	* Thyroid	0.4%	0.3%	0.3%	0.3%	0.3%
C82-88	Non Hodgkin Lymphoma	2.7%	3.0%	3.4%	3.2%	3.4%
C81	Hodgkin's Disease	0.6%	0.5%	0.3%	0.2%	0.2%
C90	Multiple Myeloma	1.5%	1.8%	1.7%	1.6%	1.9%
C91-95	Leukaemia	3.4%	3.4%	3.4%	2.9%	3.2%
...	Others	6.0%	5.7%	7.1%	8.5%	8.2%
C00-97	* All malignant Cancers	100%	100%	100%	100%	100%

\* Cancers for which the numbers of deaths are corrected before 1995



Female		1985-88	1989-92	1993-96	1997-00	2001-03
ICD10	Site					
C00-14	* Oral Cavity & Pharynx	1.0%	1.2%	1.1%	1.2%	1.4%
C15	Oesophagus	1.1%	1.3%	1.2%	1.4%	1.5%
C16	* Stomach	6.3%	5.2%	4.4%	3.8%	3.3%
C18-21	* Colon, Rectum	13.3%	12.8%	12.3%	11.4%	11.9%
C22	Liver & Intrahepatic Bile Ducts	1.6%	1.6%	1.9%	2.1%	2.3%
C23-24	Gallbladder & Extrahepatic Bile Tract	2.8%	2.7%	2.4%	2.1%	1.8%
C25	* Pancreas	5.8%	6.1%	6.0%	6.8%	6.7%
C32	* Larynx	0.1%	0.2%	0.2%	0.2%	0.2%
C33-34	* Lung, Trachea	6.0%	6.9%	8.8%	10.2%	11.3%
C38.4, C45.0	Pleura	0.3%	0.3%	0.3%	0.2%	0.2%
C40-41	Bones, Joints, Cartilage	0.2%	0.2%	0.2%	0.3%	0.2%
C47, C49	Soft Tissues	0.6%	0.4%	0.6%	0.7%	0.7%
C43	* Skin Melanoma	1.5%	1.6%	1.4%	1.5%	1.5%
C50	* Breast	22.1%	21.9%	21.6%	19.9%	19.8%
C53	* Cervix Uteri	2.5%	2.2%	2.0%	1.4%	1.3%
C54-55	* Corpus Uteri	3.9%	3.9%	3.4%	3.0%	2.9%
C56	* Ovary	6.5%	6.6%	6.1%	5.9%	6.1%
C61	Prostate	-	-	-	-	-
C62	Testis	-	-	-	-	-
C67	* Bladder	2.0%	2.1%	2.2%	2.1%	2.1%
C64-66, C68	Kidney & Urinary Organs	2.6%	2.4%	2.3%	2.4%	2.1%
C70-72	* Brain & Central Nerves	2.1%	2.4%	2.5%	2.6%	2.7%
C73	* Thyroid	1.0%	0.9%	0.7%	0.7%	0.8%
C82-88	Non Hodgkin Lymphoma	3.0%	3.5%	3.8%	4.0%	3.7%
C81	Hodgkin's Disease	0.6%	0.4%	0.3%	0.2%	0.2%
C90	Multiple Myeloma	2.0%	2.0%	2.3%	2.2%	2.1%
C91-95	Leukaemia	3.5%	3.5%	3.2%	3.3%	3.3%
...	Others	7.6%	7.8%	8.8%	10.6%	9.9%
C00-97	* All malignant Cancers	100%	100%	100%	100%	100%

\* Cancers for which the numbers of deaths are corrected before 1995



## Age standardised rates, european population, per 100'000

ICD10	Male	Site	Switzerland					Alemannic part		Latin part	
			1985-88	1989-92	1993-96	1997-00	2001-03	1997-00	2001-03	1997-00	2001-03
C00-14	*	Oral Cavity & Pharynx	8.6	8.6	7.2	7.5	6.5	6.3	5.3	10.3	9.6
C15		Oesophagus	8.4	8.1	7.6	7.2	7.5	6.3	6.8	9.6	9.0
C16	*	Stomach	16.1	14.1	11.2	9.4	8.2	9.1	8.2	10.0	8.4
C18-21	*	Colon, Rectum	27.6	26.1	24.5	22.3	19.7	22.0	20.0	23.2	18.8
C22		Liver & Intrahepatic Bile Ducts	7.5	8.2	8.6	8.8	9.0	7.1	7.0	12.9	13.9
C23-24		Gallbladder & Extrahepatic Bile Tract	2.4	2.4	2.1	1.9	1.5	1.9	1.7	1.9	1.0
C25	*	Pancreas	11.4	11.8	11.0	10.4	10.9	10.2	10.2	10.8	12.8
C32	*	Larynx	3.2	3.1	2.3	2.0	2.0	1.8	1.8	2.5	2.7
C33-34	*	Lung, Trachea	67.5	63.2	56.3	52.0	48.4	50.1	46.5	56.9	53.1
C38.4, C45.0		Pleura	2.1	2.4	2.2	1.8	2.0	2.0	2.4	1.1	0.9
C40-41		Bones, Joints, Cartilage	0.5	0.6	0.5	0.6	0.5	0.6	0.5	0.6	0.3
C47, C49		Soft Tissues	1.1	0.9	1.1	1.0	1.3	1.0	1.3	0.9	1.2
C43	*	Skin Melanoma	3.3	3.7	3.6	3.6	3.2	3.6	3.2	3.8	3.1
C50		Breast	0.3	0.3	0.3	0.2	0.2	0.2	0.1	0.4	0.3
C53		Cervix Uteri	-	-	-	-	-	-	-	-	-
C54-55		Corpus Uteri	-	-	-	-	-	-	-	-	-
C56		Ovary	-	-	-	-	-	-	-	-	-
C61	*	Prostate	31.7	32.1	32.7	31.4	28.9	33.3	29.6	26.9	27.1
C62	*	Testis	0.8	0.6	0.4	0.5	0.3	0.5	0.4	0.3	0.3
C67	*	Bladder	9.2	9.3	8.3	7.6	6.9	7.4	6.8	8.1	6.9
C64-66, C68		Kidney & Urinary Organs	7.6	7.4	6.6	5.8	5.7	6.1	5.6	5.1	6.0
C70-72	*	Brain & Central Nerves	6.3	5.8	6.0	6.2	6.0	6.4	6.0	5.8	6.0
C73	*	Thyroid	1.0	0.8	0.7	0.6	0.5	0.6	0.5	0.5	0.6
C82-88		Non Hodgkin Lymphoma	6.8	7.2	7.7	6.8	7.0	6.7	6.9	7.2	7.2
C81		Hodgkin's Disease	1.6	1.2	0.7	0.4	0.3	0.4	0.3	0.3	0.3
C90		Multiple Myeloma	3.7	4.4	3.8	3.4	3.8	3.4	3.8	3.3	3.6
C91-95		Leukaemia	8.6	8.4	7.8	6.4	6.5	6.3	6.6	6.6	6.4
...		Others	15.0	13.8	16.1	18.2	16.4	17.3	15.9	20.3	17.9
C00-97	*	All malignant Cancers	252.5	244.4	229.3	216.1	203.2	210.7	197.4	229.6	217.5

\* Cancers for which the numbers of deaths are corrected before 1995

ICD10	Female	Site	Switzerland					Alemannic part		Latin part	
			1985-88	1989-92	1993-96	1997-00	2001-03	1997-00	2001-03	1997-00	2001-03
C00-14	*	Oral Cavity & Pharynx	1.5	1.6	1.6	1.6	1.9	1.4	1.8	2.2	2.1
C15		Oesophagus	1.5	1.7	1.6	1.7	1.7	1.5	1.4	1.9	2.5
C16	*	Stomach	7.9	6.3	5.1	4.3	3.5	4.3	3.6	4.2	3.3
C18-21	*	Colon, Rectum	17.1	15.7	14.5	12.8	12.7	13.1	12.6	12.3	12.8
C22		Liver & Intrahepatic Bile Ducts	2.1	2.2	2.4	2.5	2.7	2.3	2.5	2.9	3.1
C23-24		Gallbladder & Extrahepatic Bile Tract	3.6	3.4	2.9	2.3	2.0	2.5	2.1	2.0	1.7
C25	*	Pancreas	7.9	8.0	7.5	7.9	7.6	7.8	7.4	7.9	8.0
C32	*	Larynx	0.2	0.3	0.2	0.2	0.3	0.2	0.2	0.3	0.4
C33-34	*	Lung, Trachea	9.4	10.8	13.1	14.4	15.6	13.3	14.6	17.1	18.0
C38.4, C45.0		Pleura	0.4	0.5	0.4	0.3	0.3	0.2	0.3	0.3	0.1
C40-41		Bones, Joints, Cartilage	0.4	0.3	0.3	0.4	0.3	0.4	0.3	0.4	0.3
C47, C49		Soft Tissues	0.9	0.7	0.8	0.9	0.9	1.0	0.9	0.8	0.8
C43	*	Skin Melanoma	2.4	2.4	2.0	2.0	2.0	2.0	2.1	2.0	1.6
C50	*	Breast	34.3	32.6	31.1	26.8	25.6	27.2	26.3	25.8	24.0
C53	*	Cervix Uteri	4.1	3.4	3.0	1.9	1.6	2.1	1.7	1.4	1.4
C54-55	*	Corpus Uteri	5.2	5.0	4.1	3.5	3.3	3.6	3.3	3.3	3.4
C56	*	Ovary	10.1	9.7	8.5	7.8	7.7	7.6	7.6	8.2	7.8
C61		Prostate	-	-	-	-	-	-	-	-	-
C62		Testis	-	-	-	-	-	-	-	-	-
C67	*	Bladder	2.5	2.5	2.4	2.1	2.1	2.1	2.2	2.2	2.0
C64-66, C68		Kidney & Urinary Organs	3.7	3.4	3.0	2.9	2.4	3.1	2.6	2.4	1.9
C70-72	*	Brain & Central Nerves	3.7	4.1	4.0	3.9	3.9	3.8	4.0	4.1	3.8
C73	*	Thyroid	1.2	1.1	0.8	0.7	0.8	0.7	0.8	0.7	0.8
C82-88		Non Hodgkin Lymphoma	4.0	4.6	4.7	4.9	4.1	4.9	4.3	4.7	3.6
C81		Hodgkin's Disease	0.9	0.7	0.4	0.3	0.3	0.3	0.3	0.3	0.3
C90		Multiple Myeloma	2.7	2.6	2.8	2.6	2.3	2.7	2.4	2.2	2.1
C91-95		Leukaemia	5.0	4.8	4.1	4.0	4.0	4.1	4.0	3.8	3.8
...		Others	10.2	9.8	10.3	11.7	10.5	11.3	10.6	12.6	10.3
C00-97	*	All malignant Cancers	142.9	138.0	131.8	124.3	120.0	123.5	120.1	126.1	119.8

\* Cancers for which the numbers of deaths are corrected before 1995

## Age standardised rates, world population, per 100'000

ICD10	Male	Site	Switzerland					Alemannic part		Latin part	
			1985-88	1989-92	1993-96	1997-00	2001-03	1997-00	2001-03	1997-00	2001-03
C00-14	*	Oral Cavity & Pharynx	6.0	6.0	5.0	5.2	4.6	4.4	3.8	7.2	6.7
C15		Oesophagus	5.6	5.4	5.1	4.9	5.0	4.2	4.6	6.5	6.0
C16	*	Stomach	10.1	8.9	7.1	5.9	5.3	5.8	5.2	6.4	5.4
C18-21	*	Colon, Rectum	17.2	16.3	15.4	14.1	12.5	13.8	12.6	14.7	12.1
C22		Liver & Intrahepatic Bile Ducts	5.0	5.4	5.7	5.8	6.0	4.7	4.7	8.6	9.4
C23-24		Gallbladder & Extrahepatic Bile Tract	1.5	1.5	1.3	1.2	0.9	1.1	1.1	1.2	0.6
C25	*	Pancreas	7.4	7.7	7.2	6.8	7.1	6.6	6.5	7.0	8.3
C32	*	Larynx	2.2	2.1	1.6	1.4	1.4	1.2	1.2	1.7	1.8
C33-34	*	Lung, Trachea	45.6	42.6	37.8	34.6	32.1	33.3	30.8	38.0	35.1
C38.4, C45.0		Pleura	1.4	1.6	1.5	1.2	1.3	1.4	1.6	0.7	0.6
C40-41		Bones, Joints, Cartilage	0.5	0.5	0.4	0.5	0.4	0.5	0.5	0.5	0.2
C47, C49		Soft Tissues	0.8	0.7	0.8	0.7	0.9	0.8	0.9	0.6	0.9
C43	*	Skin Melanoma	2.4	2.6	2.5	2.5	2.1	2.4	2.1	2.6	2.1
C50		Breast	0.1	0.2	0.2	0.2	0.1	0.1	0.1	0.2	0.2
C53		Cervix Uteri	-	-	-	-	-	-	-	-	-
C54-55		Corpus Uteri	-	-	-	-	-	-	-	-	-
C56		Ovary	-	-	-	-	-	-	-	-	-
C61	*	Prostate	18.3	18.3	18.7	17.9	16.4	18.9	16.8	15.4	15.4
C62	*	Testis	0.7	0.5	0.4	0.4	0.3	0.4	0.3	0.3	0.2
C67	*	Bladder	5.7	5.6	5.1	4.6	4.1	4.5	4.1	4.9	4.2
C64-66, C68		Kidney & Urinary Organs	5.1	4.8	4.3	3.8	3.8	4.0	3.7	3.4	3.9
C70-72	*	Brain & Central Nerves	4.9	4.5	4.6	4.6	4.5	4.8	4.5	4.2	4.5
C73	*	Thyroid	0.6	0.5	0.5	0.4	0.3	0.4	0.3	0.4	0.3
C82-88		Non Hodgkin Lymphoma	4.6	4.8	5.0	4.5	4.6	4.4	4.6	4.7	4.7
C81		Hodgkin's Disease	1.2	0.9	0.5	0.3	0.2	0.3	0.2	0.2	0.2
C90		Multiple Myeloma	2.4	2.7	2.4	2.1	2.4	2.1	2.4	2.1	2.3
C91-95		Leukaemia	6.0	5.8	5.4	4.3	4.4	4.3	4.4	4.5	4.3
...		Others	9.6	8.8	10.2	11.6	10.3	11.0	9.9	13.0	11.5
C00-97	*	All malignant Cancers	164.8	158.6	148.5	139.3	131.0	135.4	127.0	149.1	141.0

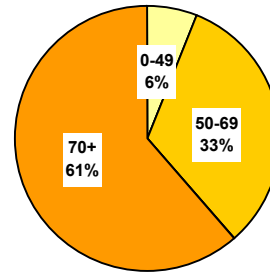
\* Cancers for which the numbers of deaths are corrected before 1995

ICD10	Female	Site	Switzerland					Alemannic part		Latin part	
			1985-88	1989-92	1993-96	1997-00	2001-03	1997-00	2001-03	1997-00	2001-03
C00-14	*	Oral Cavity & Pharynx	1.0	1.1	1.1	1.1	1.3	0.9	1.3	1.5	1.5
C15		Oesophagus	1.0	1.1	1.0	1.1	1.1	1.0	0.9	1.3	1.7
C16	*	Stomach	4.8	3.9	3.2	2.7	2.2	2.7	2.3	2.7	2.1
C18-21	*	Colon, Rectum	10.7	9.9	9.2	8.1	8.0	8.3	8.0	7.8	8.0
C22		Liver & Intrahepatic Bile Ducts	1.4	1.4	1.5	1.6	1.7	1.5	1.6	1.9	2.0
C23-24		Gallbladder & Extrahepatic Bile Tract	2.3	2.1	1.8	1.5	1.2	1.5	1.3	1.3	1.1
C25	*	Pancreas	5.1	5.1	4.8	5.0	4.9	5.0	4.7	5.1	5.1
C32	*	Larynx	0.2	0.2	0.1	0.1	0.2	0.1	0.2	0.2	0.2
C33-34	*	Lung, Trachea	6.6	7.5	9.1	9.9	10.8	9.2	10.1	11.8	12.5
C38.4, C45.0		Pleura	0.3	0.3	0.3	0.2	0.2	0.2	0.2	0.2	0.1
C40-41		Bones, Joints, Cartilage	0.4	0.2	0.3	0.3	0.3	0.3	0.3	0.4	0.2
C47, C49		Soft Tissues	0.6	0.5	0.6	0.7	0.6	0.7	0.6	0.5	0.6
C43	*	Skin Melanoma	1.7	1.8	1.4	1.4	1.4	1.4	1.5	1.4	1.2
C50	*	Breast	23.6	22.4	21.5	18.4	17.6	18.8	18.1	17.7	16.4
C53	*	Cervix Uteri	2.9	2.4	2.1	1.4	1.1	1.5	1.2	1.0	0.9
C54-55	*	Corpus Uteri	3.3	3.2	2.6	2.3	2.1	2.3	2.1	2.1	2.2
C56	*	Ovary	6.9	6.6	5.7	5.3	5.2	5.2	5.1	5.5	5.3
C61		Prostate	-	-	-	-	-	-	-	-	-
C62		Testis	-	-	-	-	-	-	-	-	-
C67	*	Bladder	1.5	1.5	1.5	1.3	1.3	1.3	1.3	1.4	1.2
C64-66, C68		Kidney & Urinary Organs	2.5	2.3	2.0	1.9	1.6	2.0	1.7	1.6	1.2
C70-72	*	Brain & Central Nerves	2.9	3.3	3.0	2.9	3.0	2.8	3.0	3.0	3.0
C73	*	Thyroid	0.7	0.6	0.5	0.4	0.5	0.4	0.5	0.5	0.5
C82-88		Non Hodgkin Lymphoma	2.7	3.0	3.1	3.2	2.7	3.2	2.8	3.1	2.3
C81		Hodgkin's Disease	0.7	0.5	0.3	0.2	0.2	0.2	0.2	0.2	0.2
C90		Multiple Myeloma	1.7	1.7	1.8	1.7	1.5	1.8	1.5	1.4	1.3
C91-95		Leukaemia	3.6	3.5	2.9	2.8	2.8	2.9	2.8	2.6	2.7
...		Others	6.5	6.3	6.6	7.5	6.7	7.3	6.8	8.0	6.3
C00-97	*	All malignant Cancers	95.7	92.4	88.2	82.9	80.2	82.5	80.4	84.1	79.8

\* Cancers for which the numbers of deaths are corrected before 1995

Number of deaths - three last periods

Sex	Period	Age group			Total	Yearly average
		0-49	50-69	70+		
Male	1993-96	2'007	11'636	20'000	33'643	8'411
	1997-00	1'762	11'660	20'340	33'762	8'441
	2001-03	1'247	8'734	15'587	25'568	8'523
Female	1993-96	1'998	8'315	16'874	27'188	6'797
	1997-00	1'911	8'050	17'117	27'078	6'770
	2001-03	1'375	6'154	12'984	20'513	6'838
Total	Total	10'300	54'550	102'902	167'752	15'250

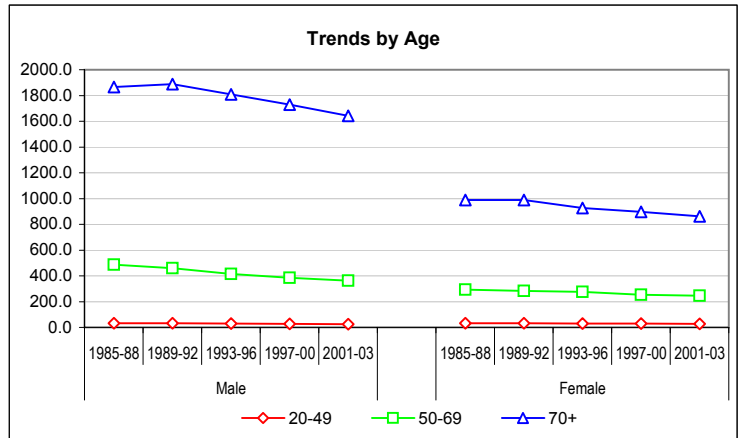


Crude rates by age-group & mean annual trends

\* \*\*: Significant variations cf. Mantel-Haenszel test (95%, 99%)  
Signification of mean annual trends not computed

Sex	Period	0-19	20-49	50-69	70+
Male	1985-88	5.16	31.84 **	486.70 **	1866.13
	1989-92	4.29	31.92	459.51 **	1887.81
	1993-96	4.34	28.96 **	413.90 **	1807.71 **
	1997-00	2.90	26.34 **	384.49 **	1730.11 **
	2001-03	3.40	24.22 **	362.82 **	1641.19 **
Female	1985-88	3.67	32.89	292.48	987.96 **
	1989-92	3.91	32.33	283.68 **	988.25 **
	1993-96	2.46	30.34 *	275.35	927.32 **
	1997-00	2.11	29.38	252.50 **	896.77 **
	2001-03	2.29	27.70 *	246.19	861.11 **
Male	Annual trend		0.975	0.981	0.986
Female	Annual trend		0.987	0.984	0.990

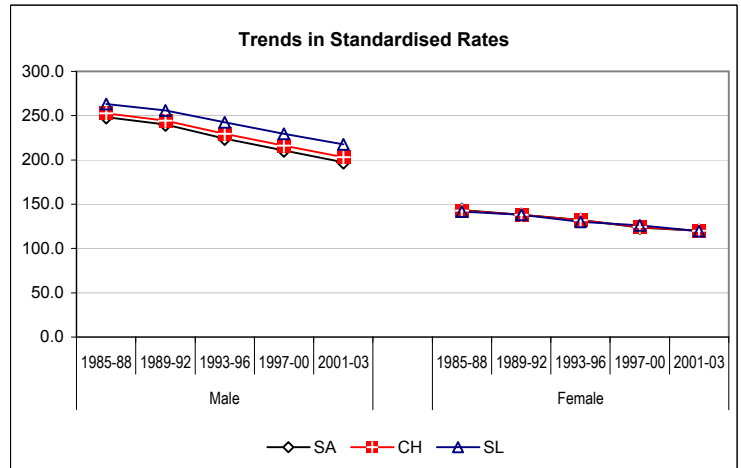
(3 last periods)



European standardized rate by period

Sex	Period	SA	CH	SL	C.I. 95% of CH	
Male	1985-88	248.27	252.50	263.24	249.7	255.3
	1989-92	239.90	244.41	255.77	241.8	247.1
	1993-96	224.07	229.35	242.54	226.9	231.8
	1997-00	210.73	216.11	229.56	213.8	218.4
	2001-03	197.42	203.15	217.50	200.6	205.7
Female	1985-88	143.40	142.89	141.61	141.1	144.7
	1989-92	137.96	138.02	138.16	136.3	139.8
	1993-96	132.43	131.80	130.26	130.1	133.5
	1997-00	123.53	124.29	126.12	130.1	133.5
	2001-03	120.08	119.99	119.76	122.7	125.9
Male	Annual trend	0.982	0.983	0.985		
Female	Annual trend	0.986	0.987	0.988		

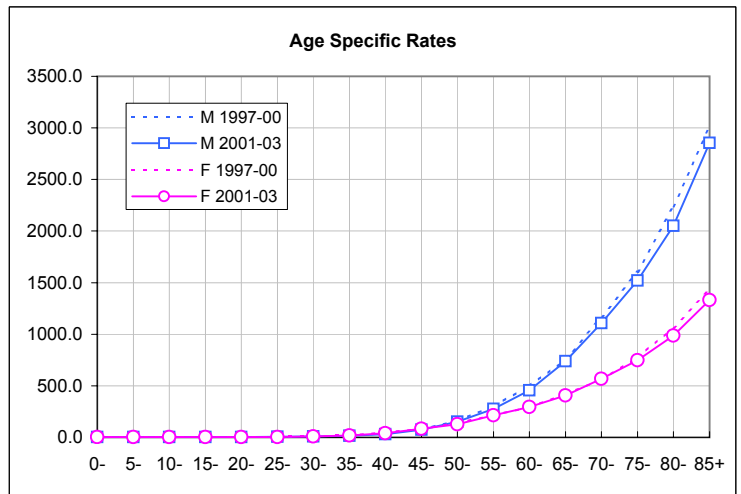
(3 last periods)



CH Switzerland  
SA Alemannic part of Switzerland: German-speaking  
SL Latin part of Switzerland: French- or Italian-speaking

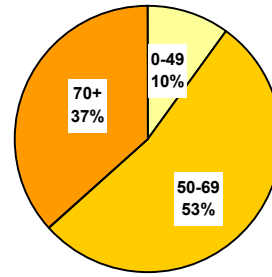
Age specific rates - last periods compared

Age	M		F	
	1997-00	2001-03	1997-00	2001-03
0-	2.9	4.0	2.0	2.6
5-	2.5	3.5	2.0	1.8
10-	3.3	3.0	1.9	1.6
15-	3.0	3.3	2.5	3.3
20-	7.2	4.5	4.7	4.1
25-	6.4	6.2	6.5	4.5
30-	10.2	8.5	11.0	10.8
35-	16.9	16.1	23.2	18.9
40-	38.9	31.5	45.9	39.7
45-	78.9	75.1	85.2	84.3
50-	162.1	151.8	140.0	127.7
55-	303.3	275.8	214.7	214.5
60-	498.5	455.3	291.9	295.4
65-	754.0	738.6	419.9	405.5
70-	1166.0	1108.7	559.6	566.5
75-	1605.5	1521.0	775.7	748.9
80-	2236.9	2052.2	1064.1	988.0
85+	3008.8	2854.6	1430.1	1330.9
Crude rate	242.3	239.5	185.5	183.6



Number of deaths - three last periods

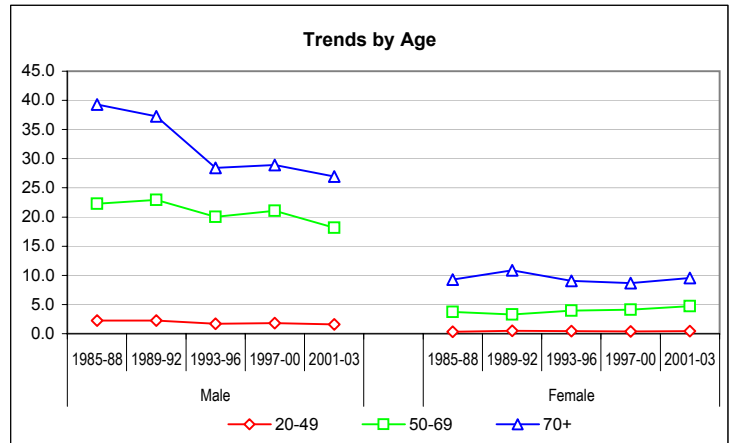
Sex	Period	Age group			Total	Yearly average
		0-49	50-69	70+		
Male	1993-96	112	564	314	990	247
	1997-00	114	639	340	1'093	273
	2001-03	78	437	256	771	257
Female	1993-96	28	119	165	312	78
	1997-00	25	131	166	322	81
	2001-03	24	118	144	286	95
Total	Total	381	2'007	1'385	3'774	343



Crude rates by age-group & mean annual trends

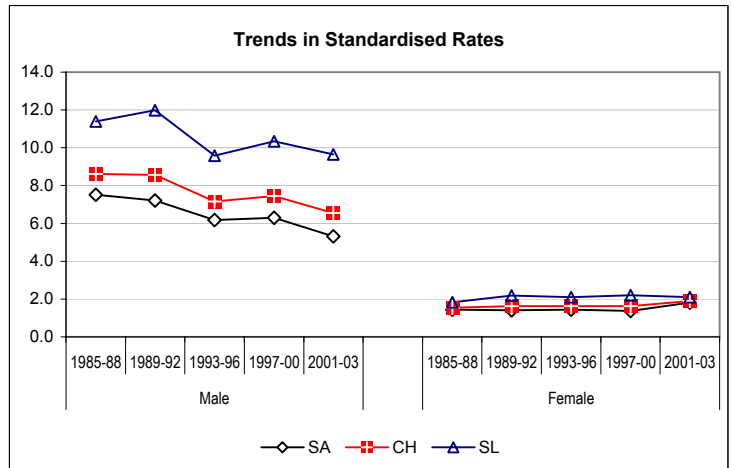
\* \*\*: Significant variations cf. Mantel-Haenszel test (95%, 99%)  
Signification of mean annual trends not computed

Sex	Period	0-19	20-49	50-69	70+
Male	1985-88	0.00	2.23	22.26	39.31
	1989-92	0.03	2.26	22.95	37.28
	1993-96	0.03	1.72 *	20.05 *	28.41 **
	1997-00	0.03	1.79	21.07	28.92
	2001-03	0.04	1.61	18.15 *	26.96
	Annual trend (3 last periods)			0.991	0.987
Female	1985-88	0.03	0.31	3.72	9.26
	1989-92	0.03	0.51	3.32	10.84
	1993-96	0.03	0.43	3.93	9.07
	1997-00	0.00	0.40	4.11	8.70
	2001-03	0.08	0.46	4.72	9.55
	Annual trend (3 last periods)			1.007	1.026



European standardized rate by period

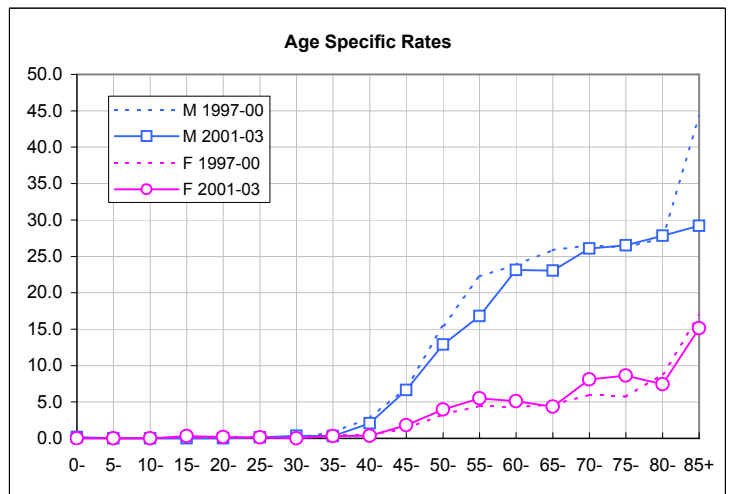
Sex	Period	SA	CH	SL	C.I. 95% of CH	
Male	1985-88	7.52	8.62	11.40	8.1	9.2
	1989-92	7.20	8.57	11.99	8.1	9.1
	1993-96	6.18	7.15	9.59	6.7	7.6
	1997-00	6.29	7.45	10.34	7.0	7.9
	2001-03	5.31	6.55	9.65	6.1	7.0
Female	1985-88	1.44	1.55	1.83	1.4	1.8
	1989-92	1.40	1.62	2.18	1.4	1.8
	1993-96	1.43	1.63	2.10	1.4	1.8
	1997-00	1.38	1.62	2.20	1.4	1.8
	2001-03	1.81	1.89	2.11	1.4	1.8
Male Annual trend (3 last periods)		0.980	0.989	1.002		
Female Annual trend (3 last periods)		1.032	1.021	1.001		



CH Switzerland  
SA Alemannic part of Switzerland: German-speaking  
SL Latin part of Switzerland: French- or Italian-speaking

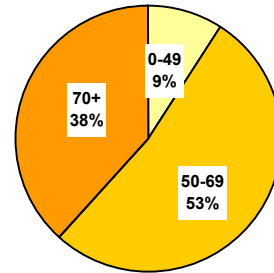
Age specific rates - last periods compared

Age	M		F	
	1997-00	2001-03	1997-00	2001-03
0-	0.1	0.2	0.0	0.0
5-	0.0	0.0	0.0	0.0
10-	0.0	0.0	0.0	0.0
15-	0.0	0.0	0.0	0.3
20-	0.1	0.0	0.1	0.2
25-	0.1	0.1	0.0	0.1
30-	0.1	0.4	0.1	0.0
35-	0.8	0.3	0.4	0.3
40-	2.8	2.0	0.5	0.3
45-	7.0	6.6	1.3	1.8
50-	15.5	12.9	3.3	4.0
55-	22.2	16.8	4.5	5.5
60-	23.8	23.1	4.3	5.1
65-	25.8	23.0	4.6	4.3
70-	26.5	26.1	6.0	8.1
75-	26.2	26.5	5.7	8.6
80-	27.5	27.8	8.8	7.4
85+	44.2	29.2	16.8	15.1
Crude rate	7.8	7.2	2.2	2.6



Number of deaths - three last periods

Sex	Period	Age group			Total	Yearly average
		0-49	50-69	70+		
Male	1993-96	137	733	450	1'320	330
	1997-00	130	799	466	1'395	349
	2001-03	88	564	361	1'013	338
Female	1993-96	33	132	190	355	89
	1997-00	26	146	199	371	93
	2001-03	27	136	164	327	109
Total	Total	441	2'510	1'830	4'781	435

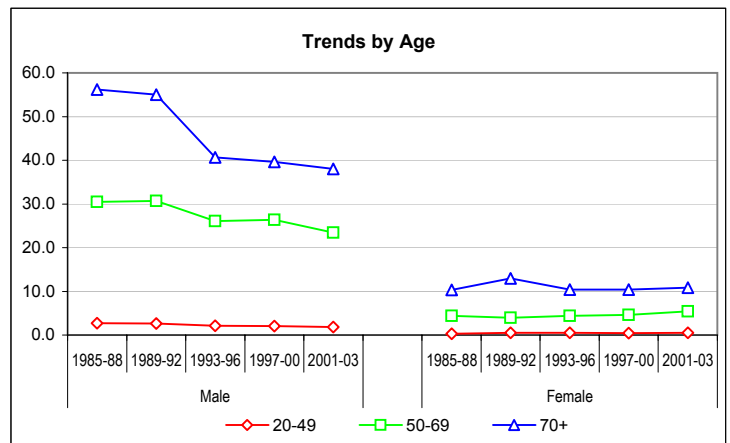


Crude rates by age-group & mean annual trends

\* \*\*: Significant variations cf. Mantel-Haenszel test (95%, 99%)  
Signification of mean annual trends not computed

Sex	Period	0-19	20-49	50-69	70+
Male	1985-88	0.00	2.74	30.46 *	56.15 *
	1989-92	0.03	2.61	30.70	55.01
	1993-96	0.03	2.12	26.07 **	40.68 **
	1997-00	0.03	2.04	26.35	39.64
	2001-03	0.04	1.82	23.43 *	38.01
Female	1985-88	0.03	0.33	4.41	10.34
	1989-92	0.03	0.54	3.95	12.94
	1993-96	0.03	0.51	4.38	10.42 *
	1997-00	0.00	0.42	4.58	10.43
	2001-03	0.08	0.53	5.44	10.88
Male	Annual trend		0.979	0.986	0.991
Female	Annual trend		1.001	1.030	1.006

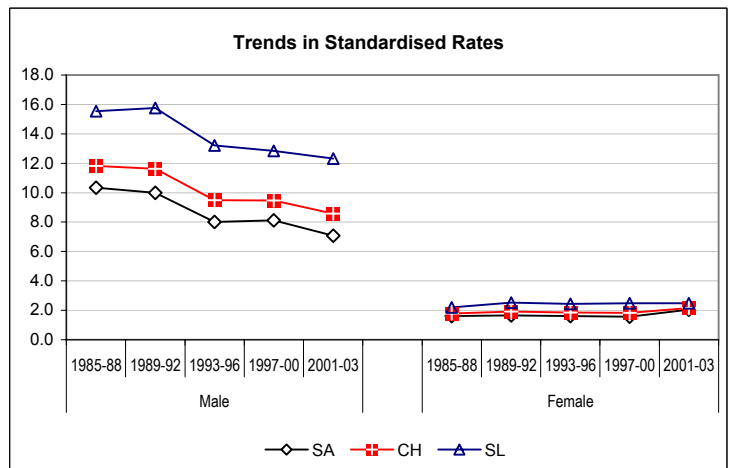
(3 last periods)



European standardized rate by period

Sex	Period	SA	CH	SL	C.I. 95% of CH	
Male	1985-88	10.35	11.82	15.55	11.2	12.4
	1989-92	9.99	11.63	15.76	11.1	12.2
	1993-96	8.02	9.50	13.20	9.0	10.0
	1997-00	8.12	9.47	12.84	9.0	10.0
	2001-03	7.08	8.57	12.32	8.0	9.1
Female	1985-88	1.61	1.77	2.19	1.6	2.0
	1989-92	1.66	1.91	2.53	1.7	2.1
	1993-96	1.60	1.84	2.44	1.6	2.1
	1997-00	1.56	1.83	2.48	1.6	2.1
	2001-03	2.04	2.16	2.47	1.6	2.0
Male	Annual trend	0.983	0.986	0.990		
Female	Annual trend	1.033	1.022	1.002		

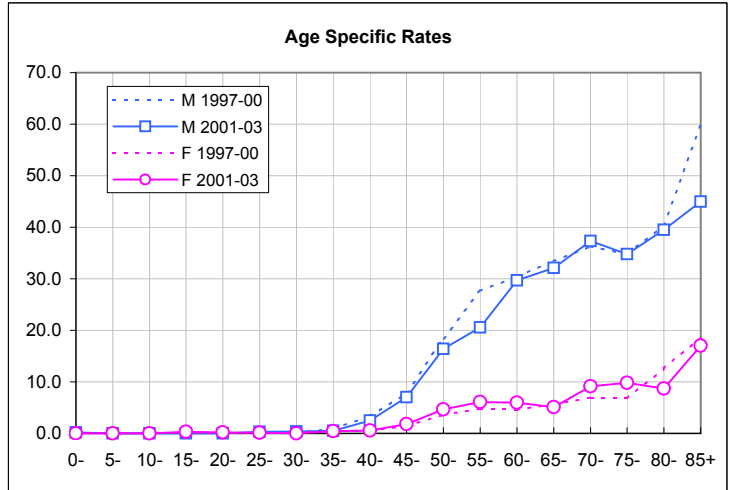
(3 last periods)



CH Switzerland  
SA Alemannic part of Switzerland: German-speaking  
SL Latin part of Switzerland: French- or Italian-speaking

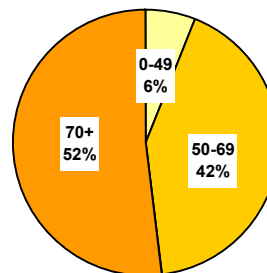
Age specific rates - last periods compared

Age	M		F	
	1997-00	2001-03	1997-00	2001-03
0-	0.1	0.2	0.0	0.0
5-	0.0	0.0	0.0	0.0
10-	0.0	0.0	0.0	0.0
15-	0.0	0.0	0.0	0.3
20-	0.1	0.0	0.1	0.2
25-	0.1	0.3	0.0	0.1
30-	0.1	0.4	0.1	0.0
35-	0.9	0.5	0.4	0.4
40-	3.3	2.5	0.5	0.6
45-	7.9	7.0	1.4	1.8
50-	18.4	16.4	3.6	4.6
55-	27.6	20.5	4.8	6.1
60-	30.4	29.7	4.6	6.0
65-	33.4	32.1	5.7	5.1
70-	36.3	37.3	7.0	9.1
75-	34.8	34.8	6.8	9.8
80-	40.4	39.5	12.6	8.7
85+	59.8	45.0	18.6	17.0
Crude rate	10.0	9.5	2.5	2.9



Number of deaths - three last periods

Sex	Period	Age group			Total	Yearly average
		0-49	50-69	70+		
Male	1993-96	87	486	512	1'085	271
	1997-00	68	518	514	1'100	275
	2001-03	57	420	434	911	304
Female	1993-96	12	103	222	337	84
	1997-00	11	112	244	367	92
	2001-03	10	88	202	300	100
Total	Total	245	1'727	2'128	4'100	373

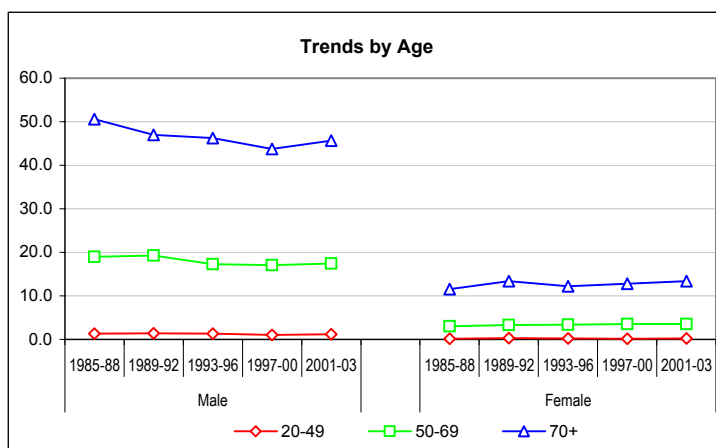


Crude rates by age-group & mean annual trends

\*, \*\*: Significant variations cf. Mantel-Haenszel test (95%, 99%)  
Signification of mean annual trends not computed

Sex	Period	0-19	20-49	50-69	70+
Male	1985-88	0.00	1.36 *	19.00	50.58 **
	1989-92	0.00	1.37	19.27	46.97
	1993-96	0.00	1.35	17.29	46.28
	1997-00	0.03	1.06	17.08	43.72
	2001-03	0.00	1.19	17.45	45.70
Female	1985-88	0.00	0.17	3.03	11.53 *
	1989-92	0.00	0.26	3.31	13.37
	1993-96	0.00	0.19	3.41	12.20
	1997-00	0.00	0.18	3.51	12.78
	2001-03	0.00	0.21	3.52	13.40
Male	Annual trend		0.979	1.001	0.998
Female	Annual trend		1.013	1.005	1.013

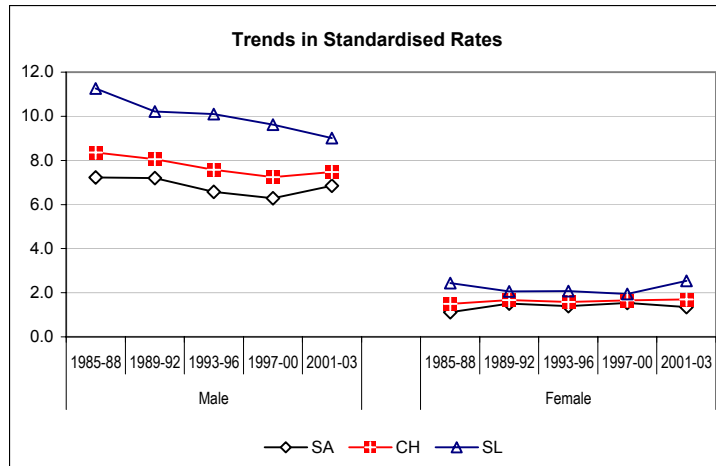
( 3 last periods )



European standardized rate by period

Sex	Period	SA	CH	SL	C.I. 95% of CH	
Male	1985-88	7.22	8.35	11.25	7.9	8.9
	1989-92	7.19	8.05	10.22	7.6	8.6
	1993-96	6.57	7.58	10.09	7.1	8.0
	1997-00	6.29	7.24	9.63	6.8	7.7
	2001-03	6.85	7.47	9.02	7.0	8.0
Female	1985-88	1.12	1.50	2.44	1.3	1.7
	1989-92	1.50	1.66	2.06	1.5	1.9
	1993-96	1.39	1.59	2.07	1.4	1.8
	1997-00	1.54	1.66	1.94	1.4	1.8
	2001-03	1.35	1.70	2.54	1.5	1.8
Male	Annual trend	1.005	0.997	0.984		
Female	Annual trend	0.998	1.010	1.027		

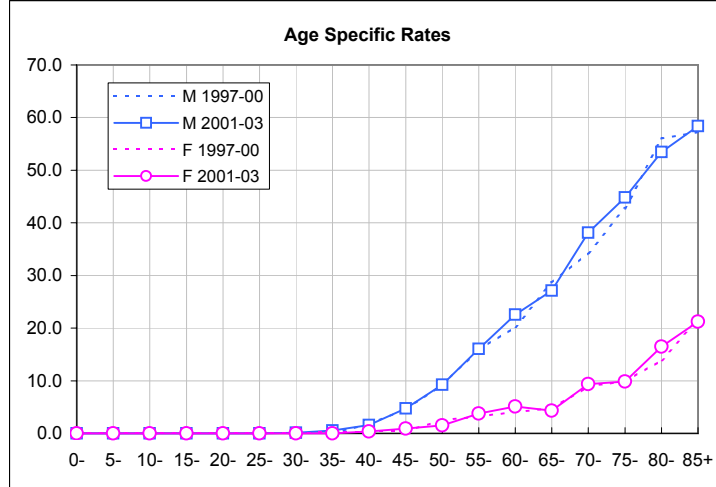
( 3 last periods )



CH Switzerland  
SA Alemannic part of Switzerland: German-speaking  
SL Latin part of Switzerland: French- or Italian-speaking

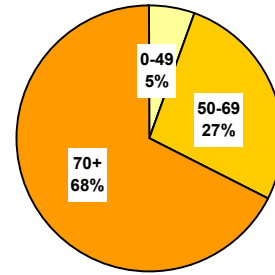
Age specific rates - last periods compared

Age	M		F	
	1997-00	2001-03	1997-00	2001-03
0-	0.1	0.0	0.0	0.0
5-	0.0	0.0	0.0	0.0
10-	0.0	0.0	0.0	0.0
15-	0.0	0.0	0.0	0.0
20-	0.0	0.0	0.0	0.0
25-	0.0	0.0	0.0	0.0
30-	0.1	0.1	0.1	0.0
35-	0.1	0.5	0.3	0.0
40-	1.7	1.6	0.3	0.3
45-	4.6	4.7	0.4	0.9
50-	9.3	9.2	2.5	1.5
55-	15.9	16.1	3.2	3.8
60-	20.2	22.6	4.0	5.1
65-	28.7	27.1	4.8	4.3
70-	34.3	38.1	8.9	9.4
75-	42.8	44.8	9.9	9.8
80-	56.0	53.4	13.9	16.5
85+	57.2	58.4	21.7	21.2
Crude rate	7.9	8.5	2.5	2.7



Number of deaths - three last periods

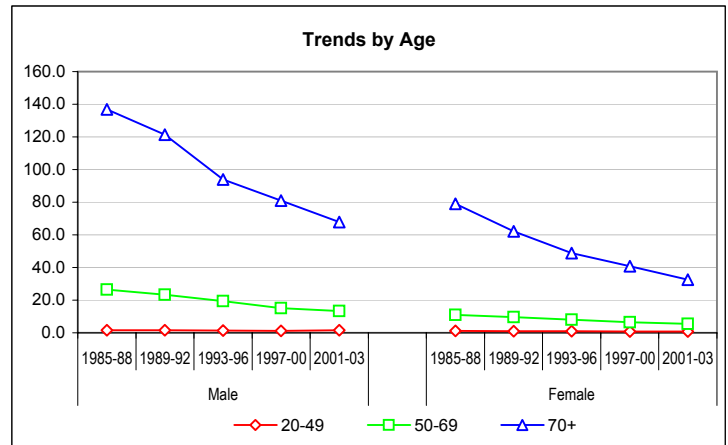
Sex	Period	Age group			Total	Yearly average
		0-49	50-69	70+		
Male	1993-96	88	545	1'038	1'670	418
	1997-00	74	457	952	1'483	371
	2001-03	75	322	644	1'041	347
Female	1993-96	56	244	889	1'190	297
	1997-00	52	209	778	1'039	260
	2001-03	40	138	490	668	223
Total	Total	385	1'915	4'791	7'091	645



Crude rates by age-group & mean annual trends

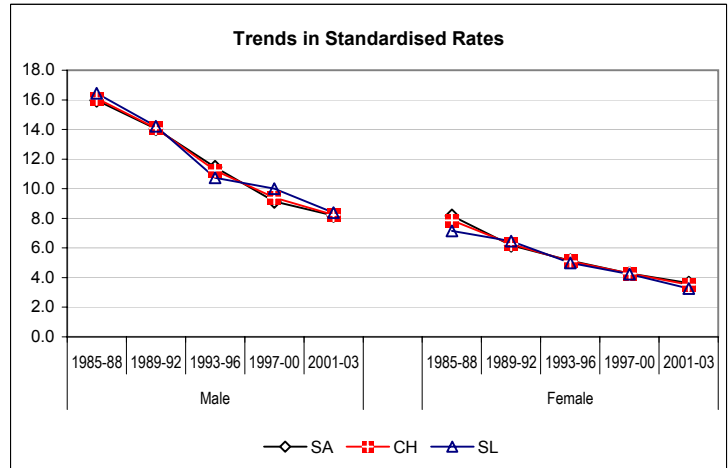
\*, \*\*: Significant variations cf. Mantel-Haenszel test (95%, 99%)  
Signification of mean annual trends not computed

Sex	Period	0-19	20-49	50-69	70+
Male	1985-88	0.03	1.54 *	26.46 **	136.93 **
	1989-92	0.00	1.66	23.41 *	121.38 **
	1993-96	0.00	1.36	19.37 **	93.84 **
	1997-00	0.03	1.16	15.07 **	80.98 **
	2001-03	0.00	1.57	13.38	67.81 **
Female	1985-88	0.00	1.19	10.88	78.94 **
	1989-92	0.00	1.00	9.69	62.21 **
	1993-96	0.00	0.89	8.09	48.86 **
	1997-00	0.03	0.81	6.56 *	40.76 **
	2001-03	0.00	0.84	5.52	32.50 **
Male	Annual trend (3 last periods)		1.017	0.948	0.955
Female	Annual trend (3 last periods)		0.991	0.947	0.944



European standardized rate by period

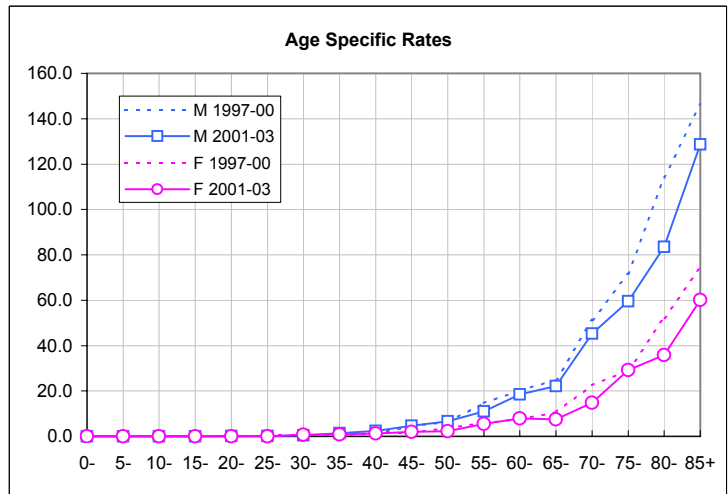
Sex	Period	SA	CH	SL	C.I. 95% of CH	
Male	1985-88	15.97	16.11	16.45	15.4	16.8
	1989-92	14.04	14.09	14.23	13.5	14.7
	1993-96	11.45	11.25	10.74	10.7	11.8
	1997-00	9.15	9.39	10.00	8.9	9.9
	2001-03	8.18	8.24	8.38	7.7	8.8
Female	1985-88	8.17	7.87	7.15	7.5	8.3
	1989-92	6.17	6.26	6.47	5.9	6.6
	1993-96	5.14	5.10	5.00	4.8	5.4
	1997-00	4.28	4.27	4.24	4.8	5.4
	2001-03	3.62	3.52	3.26	4.0	4.6
Male	Annual trend (3 last periods)	0.953	0.956	0.966		
Female	Annual trend (3 last periods)	0.951	0.949	0.942		



CH Switzerland  
SA Alemannic part of Switzerland: German-speaking  
SL Latin part of Switzerland: French- or Italian-speaking

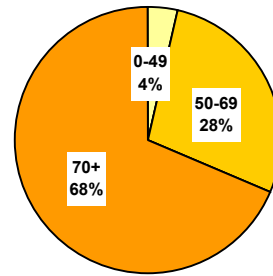
Age specific rates - last periods compared

Age	M		F	
	1997-00	2001-03	1997-00	2001-03
0-	0.1	0.0	0.0	0.0
5-	0.0	0.0	0.0	0.0
10-	0.0	0.0	0.1	0.0
15-	0.0	0.0	0.0	0.0
20-	0.0	0.2	0.0	0.0
25-	0.2	0.1	0.4	0.0
30-	0.6	0.4	0.7	0.7
35-	0.6	1.4	0.7	0.9
40-	1.1	2.4	1.4	1.3
45-	4.5	4.6	1.6	1.9
50-	6.3	6.6	3.6	2.3
55-	14.7	11.0	5.9	5.5
60-	20.2	18.5	7.5	7.9
65-	24.8	22.1	10.6	7.5
70-	51.3	45.3	22.5	14.9
75-	71.5	59.5	29.1	29.3
80-	114.0	83.5	52.2	35.9
85+	146.3	128.6	74.2	60.1
Crude rate	10.6	9.7	7.1	6.0



Number of deaths - three last periods

Sex	Period	Age group			Total	Yearly average
		0-49	50-69	70+		
Male	1993-96	139	1'164	2'291	<b>3'594</b>	<b>898</b>
	1997-00	116	1'122	2'276	<b>3'514</b>	<b>879</b>
	2001-03	80	832	1'581	<b>2'493</b>	<b>831</b>
Female	1993-96	118	769	2'454	<b>3'341</b>	<b>835</b>
	1997-00	108	714	2'278	<b>3'100</b>	<b>775</b>
	2001-03	90	536	1'805	<b>2'431</b>	<b>810</b>
Total	Total	<b>651</b>	<b>5'137</b>	<b>12'686</b>	<b>18'473</b>	<b>1'679</b>

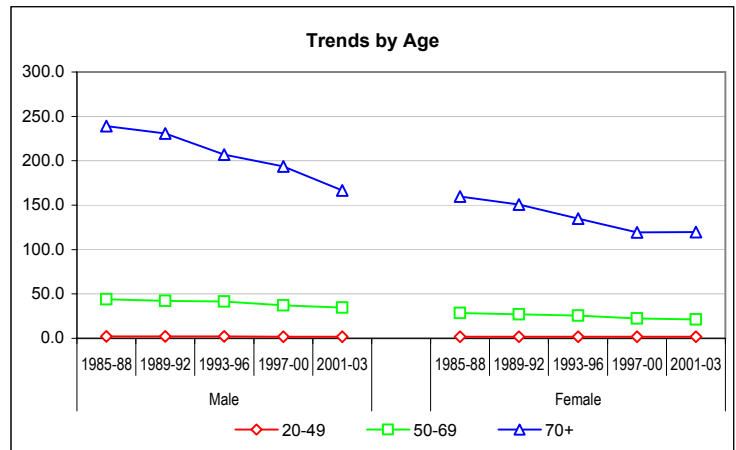


Crude rates by age-group & mean annual trends

\*, \*\*: Significant variations cf. Mantel-Haenszel test (95%, 99%)  
Signification of mean annual trends not computed

Sex	Period	0-19	20-49	50-69	70+
Male	1985-88	0.00	2.29	43.89	238.90
	1989-92	0.12	2.06	42.08	230.86 *
	1993-96	0.00	2.16	41.39	207.10 **
	1997-00	0.00	1.84	37.00 *	193.60 *
	2001-03	0.00	1.67	34.56	166.47 **
Female	1985-88	0.00	1.66	28.56	159.88 *
	1989-92	0.03	1.77	27.05	150.73 **
	1993-96	0.00	1.87	25.46	134.89 **
	1997-00	0.00	1.72	22.40 *	119.35 **
	2001-03	0.00	1.89	21.44	119.71
Male	Annual trend		0.963	0.974	0.970
Female	Annual trend		1.001	0.975	0.982

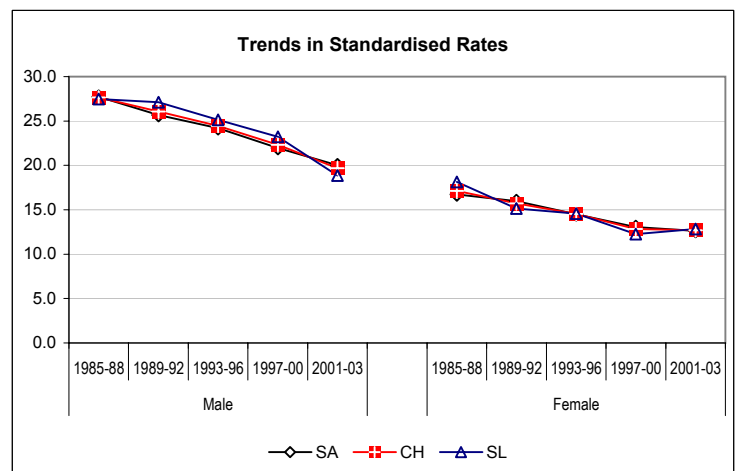
( 3 last periods )



European standardized rate by period

Sex	Period	SA	CH	SL	C.I. 95% of CH	
Male	1985-88	27.73	27.65	27.46	26.7	28.6
	1989-92	25.67	26.08	27.10	25.2	27.0
	1993-96	24.19	24.46	25.14	23.7	25.3
	1997-00	21.97	22.32	23.21	21.6	23.1
	2001-03	20.00	19.67	18.84	18.9	20.5
Female	1985-88	16.73	17.14	18.14	16.5	17.7
	1989-92	15.96	15.73	15.16	15.2	16.3
	1993-96	14.49	14.52	14.56	14.0	15.1
	1997-00	13.06	12.83	12.26	14.0	15.1
	2001-03	12.62	12.68	12.83	12.3	13.3
Male	Annual trend	0.973	0.970	0.961		
Female	Annual trend	0.980	0.980	0.981		

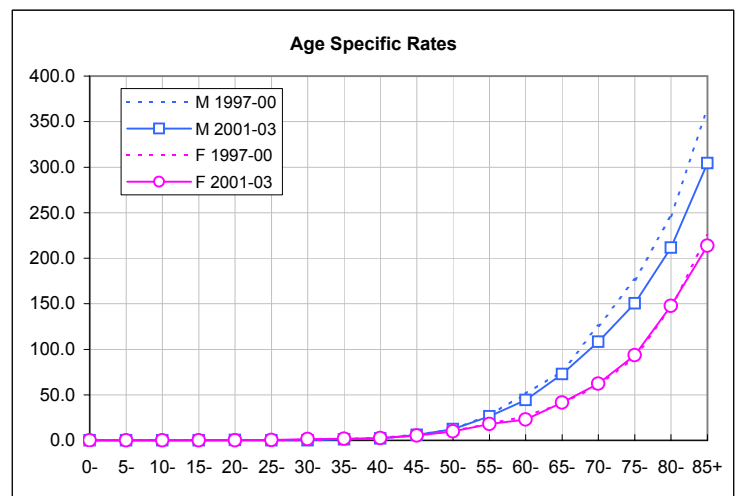
( 3 last periods )



CH Switzerland  
SA Alemannic part of Switzerland: German-speaking  
SL Latin part of Switzerland: French- or Italian-speaking

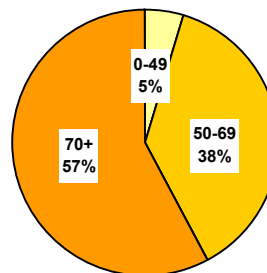
Age specific rates - last periods compared

Age	M		F	
	1997-00	2001-03	1997-00	2001-03
0-	0.0	0.0	0.0	0.0
5-	0.0	0.0	0.0	0.0
10-	0.0	0.0	0.0	0.0
15-	0.0	0.0	0.0	0.0
20-	0.0	0.3	0.2	0.0
25-	0.2	0.1	0.5	0.3
30-	0.4	0.1	0.7	1.3
35-	1.3	1.2	1.0	1.6
40-	2.8	2.2	2.6	2.3
45-	6.3	5.9	5.4	5.4
50-	12.1	12.2	10.1	9.9
55-	28.1	26.3	18.3	17.8
60-	51.4	44.4	26.5	22.7
65-	76.1	72.7	40.9	41.6
70-	125.8	108.4	59.6	62.3
75-	176.4	150.6	91.8	93.6
80-	246.0	211.6	146.0	147.7
85+	364.1	304.6	224.8	213.8
Crude rate	25.2	23.3	21.2	21.8



Number of deaths - three last periods

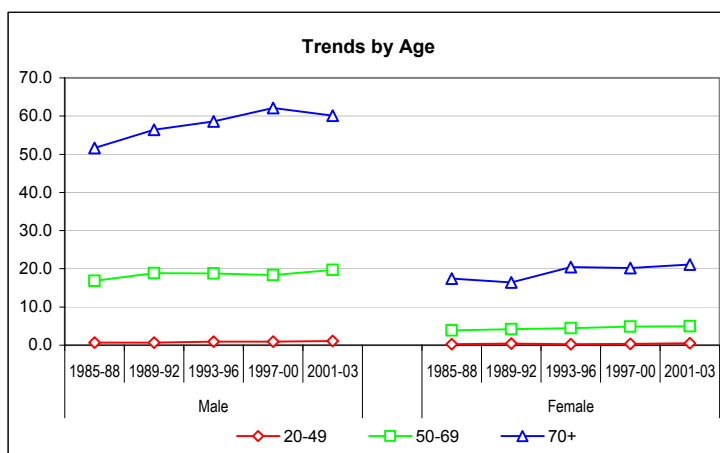
Sex	Period	Age group			Total	Yearly average
		0-49	50-69	70+		
Male	1993-96	63	527	648	1'238	310
	1997-00	63	557	730	1'350	338
	2001-03	55	475	571	1'101	367
Female	1993-96	18	134	372	524	131
	1997-00	23	155	385	563	141
	2001-03	24	124	319	467	156
Total	Total	246	1'972	3'025	5'243	477



Crude rates by age-group & mean annual trends

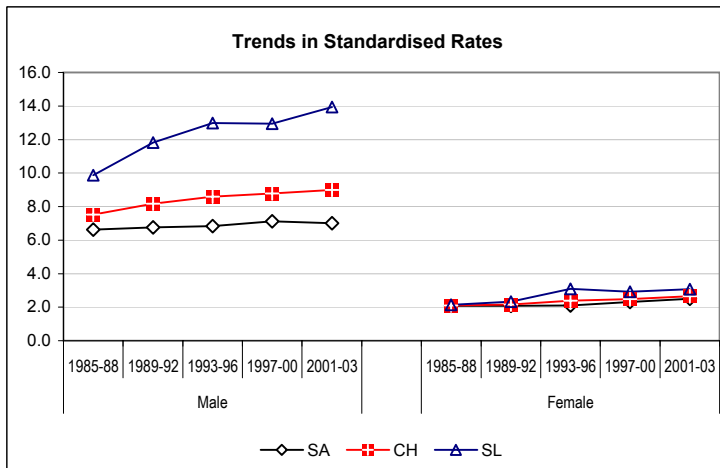
\* \*\*: Significant variations cf. Mantel-Haenszel test (95%, 99%)  
Signification of mean annual trends not computed

Sex	Period	0-19	20-49	50-69	70+
Male	1985-88	0.12	0.66	16.83	51.68
	1989-92	0.06	0.67	18.89	56.40
	1993-96	0.12	0.92	18.75	58.57
	1997-00	0.15	0.92	18.37	62.09
	2001-03	0.16	1.06	19.73	60.12
Female	1985-88	0.13	0.26	3.89	17.42
	1989-92	0.07	0.44	4.17	16.40
	1993-96	0.06	0.25	4.44	20.44 **
	1997-00	0.00	0.37	4.86	20.17
	2001-03	0.04	0.48	4.96	21.16
Male	Annual trend		1.020	1.007	1.004
Female	Annual trend		1.097	1.016	1.004



European standardized rate by period

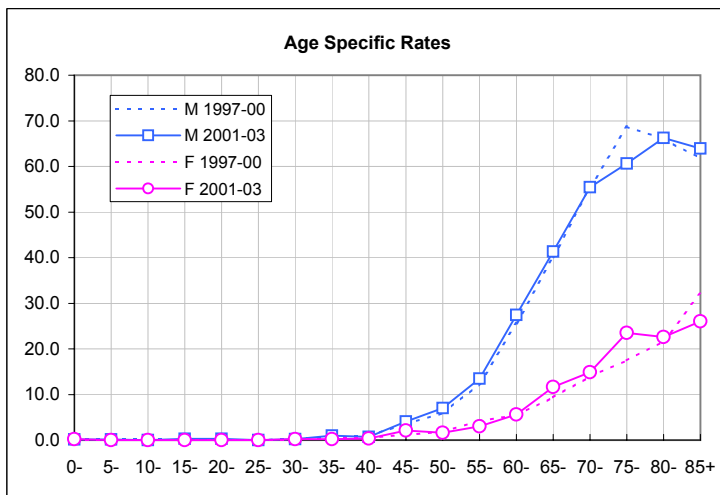
Sex	Period	SA	CH	SL	C.I. 95% of CH	
Male	1985-88	6.62	7.53	9.87	7.1	8.0
	1989-92	6.75	8.18	11.82	7.7	8.7
	1993-96	6.84	8.60	12.99	8.1	9.1
	1997-00	7.12	8.79	12.94	8.3	9.3
	2001-03	7.01	8.99	13.95	8.5	9.5
Female	1985-88	2.07	2.09	2.14	1.9	2.3
	1989-92	2.09	2.16	2.33	1.9	2.4
	1993-96	2.09	2.38	3.08	2.2	2.6
	1997-00	2.32	2.49	2.91	2.2	2.6
	2001-03	2.49	2.66	3.08	2.3	2.7
Male	Annual trend	1.004	1.006	1.010		
Female	Annual trend	1.025	1.016	0.999		



CH Switzerland  
SA Alemannic part of Switzerland: German-speaking  
SL Latin part of Switzerland: French- or Italian-speaking

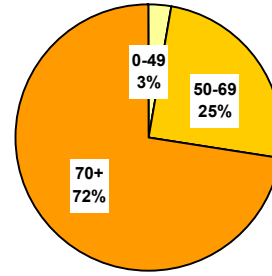
Age specific rates - last periods compared

Age	M		F	
	1997-00	2001-03	1997-00	2001-03
0-	0.2	0.2	0.0	0.2
5-	0.1	0.2	0.0	0.0
10-	0.2	0.0	0.0	0.0
15-	0.0	0.3	0.0	0.0
20-	0.1	0.3	0.0	0.0
25-	0.0	0.0	0.1	0.0
30-	0.3	0.2	0.0	0.2
35-	0.6	0.9	0.4	0.2
40-	1.0	0.7	0.6	0.3
45-	3.5	4.1	1.1	2.1
50-	5.9	7.0	1.9	1.6
55-	12.3	13.5	4.2	3.0
60-	25.6	27.4	5.4	5.6
65-	40.2	41.3	9.4	11.6
70-	55.4	55.4	13.9	14.9
75-	68.7	60.6	17.5	23.5
80-	66.0	66.3	21.7	22.6
85+	61.8	63.9	32.1	26.0
Crude rate	9.7	10.3	3.9	4.2



Number of deaths - three last periods

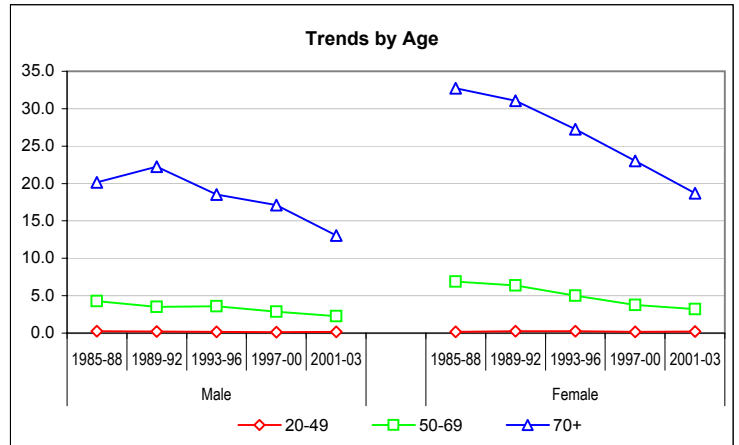
Sex	Period	Age group			Total	Yearly average
		0-49	50-69	70+		
Male	1993-96	11	101	205	317	79
	1997-00	7	87	201	295	74
	2001-03	9	55	124	188	63
Female	1993-96	17	151	496	664	166
	1997-00	11	120	439	570	143
	2001-03	10	80	282	372	124
Total	Total	65	594	1'747	2'406	219



Crude rates by age-group & mean annual trends

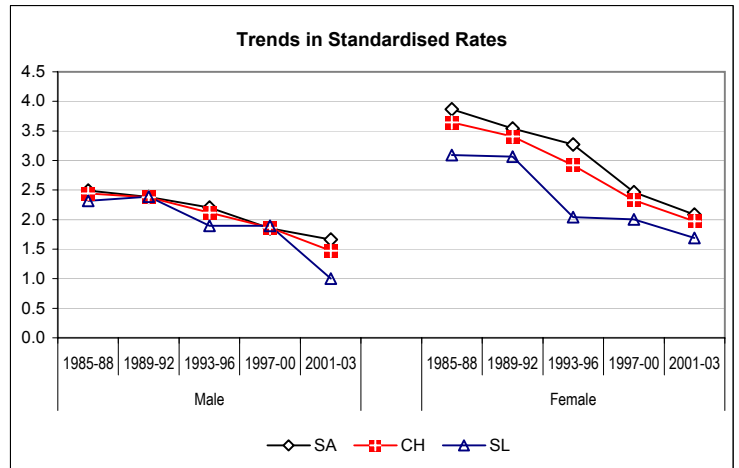
\*, \*\*: Significant variations cf. Mantel-Haenszel test (95%, 99%)  
Signification of mean annual trends not computed

Sex	Period	0-19	20-49	50-69	70+
Male	1985-88	0.00	0.24	4.27 *	20.15
	1989-92	0.00	0.21	3.51	22.23
	1993-96	0.03	0.16	3.59	18.53
	1997-00	0.00	0.11	2.87	17.10
	2001-03	0.00	0.19	2.29	13.06 *
	Annual trend (3 last periods)			1.021	0.938
Female	1985-88	0.00	0.17	6.89	32.71 **
	1989-92	0.00	0.28	6.38	31.05
	1993-96	0.00	0.27	5.00 *	27.26 *
	1997-00	0.00	0.18	3.76 *	23.00 **
	2001-03	0.00	0.21	3.20	18.70 **
	Annual trend (3 last periods)			0.962	0.938



European standardized rate by period

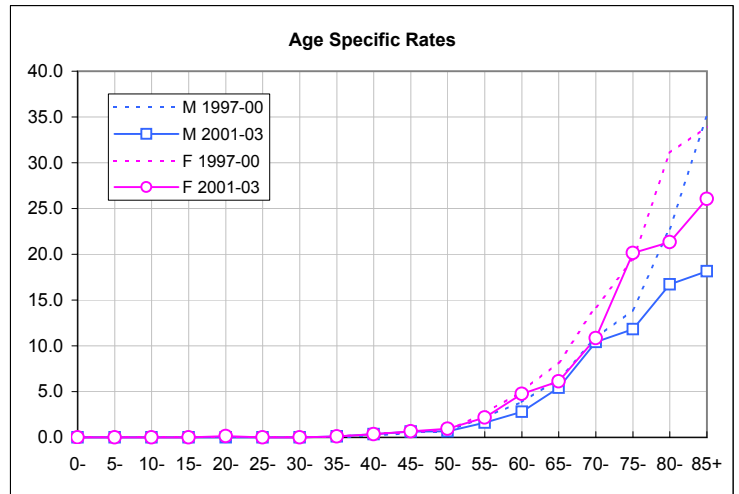
Sex	Period	SA	CH	SL	C.I. 95% of CH	
Male	1985-88	2.49	2.44	2.32	2.2	2.7
	1989-92	2.38	2.38	2.39	2.1	2.7
	1993-96	2.20	2.11	1.89	1.9	2.4
	1997-00	1.85	1.86	1.89	1.7	2.1
	2001-03	1.66	1.47	1.00	1.3	1.7
Female	1985-88	3.86	3.64	3.09	3.4	3.9
	1989-92	3.54	3.41	3.06	3.1	3.7
	1993-96	3.27	2.92	2.04	2.7	3.2
	1997-00	2.46	2.33	2.00	2.7	3.2
	2001-03	2.09	1.97	1.69	2.1	2.5
Male Annual trend (3 last periods)		0.960	0.951	0.917		
Female Annual trend (3 last periods)		0.937	0.945	0.974		



CH Switzerland  
SA Alemannic part of Switzerland: German-speaking  
SL Latin part of Switzerland: French- or Italian-speaking

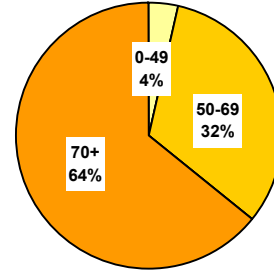
Age specific rates - last periods compared

Age	M		F	
	1997-00	2001-03	1997-00	2001-03
0-	0.0	0.0	0.0	0.0
5-	0.0	0.0	0.0	0.0
10-	0.0	0.0	0.0	0.0
15-	0.0	0.0	0.0	0.0
20-	0.0	0.0	0.0	0.2
25-	0.0	0.0	0.0	0.0
30-	0.0	0.0	0.0	0.0
35-	0.0	0.1	0.1	0.1
40-	0.2	0.3	0.4	0.3
45-	0.5	0.6	0.6	0.6
50-	0.7	0.7	0.7	1.0
55-	2.2	1.6	2.6	2.2
60-	3.9	2.8	5.0	4.8
65-	6.4	5.4	8.2	6.1
70-	10.9	10.4	14.3	10.8
75-	14.0	11.8	19.4	20.1
80-	22.8	16.7	31.1	21.3
85+	35.1	18.1	33.9	26.0
Crude rate	2.1	1.8	3.9	3.3



Number of deaths - three last periods

Sex	Period	Age group			Total	Yearly average
		0-49	50-69	70+		
Male	1993-96	88	590	933	1'611	403
	1997-00	82	619	904	1'605	401
	2001-03	40	527	799	1'366	455
Female	1993-96	50	449	1'131	1'630	407
	1997-00	44	476	1'318	1'838	460
	2001-03	39	381	963	1'383	461
Total	Total	343	3'041	6'049	9'433	858

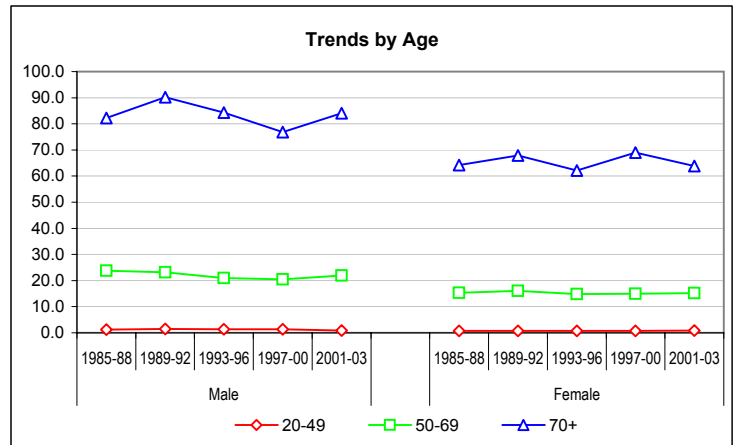


Crude rates by age-group & mean annual trends

\*, \*\*: Significant variations cf. Mantel-Haenszel test (95%, 99%)  
Signification of mean annual trends not computed

Sex	Period	0-19	20-49	50-69	70+
Male	1985-88	0.00	1.20	23.72	82.18
	1989-92	0.00	1.42	23.16	90.25
	1993-96	0.00	1.37	20.98	84.35
	1997-00	0.00	1.30	20.41	76.89 *
	2001-03	0.00	0.84 *	21.89	84.13
Female	1985-88	0.00	0.77	15.35	64.25
	1989-92	0.00	0.69	16.10	67.90
	1993-96	0.00	0.79	14.86	62.17 *
	1997-00	0.00	0.70	14.93	69.05 *
	2001-03	0.00	0.82	15.24	63.87 *
Male	Annual trend		0.935	1.005	0.998
Female	Annual trend		1.004	1.004	1.005

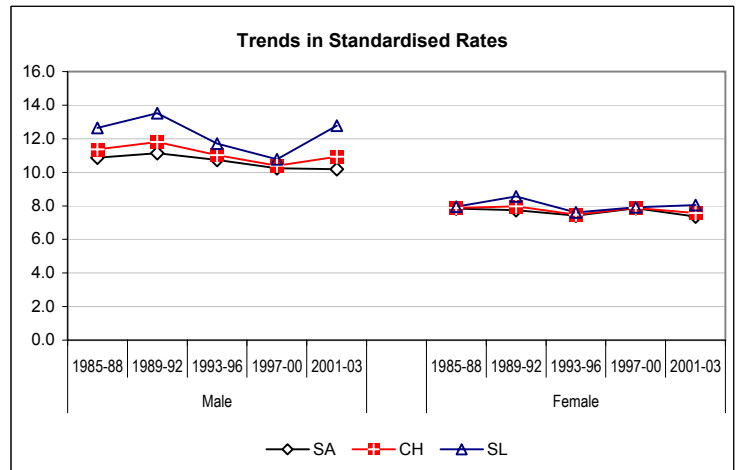
(3 last periods)



European standardized rate by period

Sex	Period	SA	CH	SL	C.I. 95% of CH	
Male	1985-88	10.87	11.37	12.65	10.8	12.0
	1989-92	11.13	11.81	13.53	11.2	12.4
	1993-96	10.74	11.02	11.70	10.5	11.6
	1997-00	10.24	10.39	10.78	9.9	10.9
	2001-03	10.19	10.93	12.78	10.3	11.5
Female	1985-88	7.84	7.87	7.95	7.5	8.3
	1989-92	7.75	7.98	8.56	7.6	8.4
	1993-96	7.41	7.47	7.60	7.1	7.9
	1997-00	7.85	7.87	7.91	7.1	7.9
	2001-03	7.36	7.56	8.04	7.5	8.3
Male	Annual trend	0.992	0.998	1.011		
Female	Annual trend	1.000	1.002	1.008		

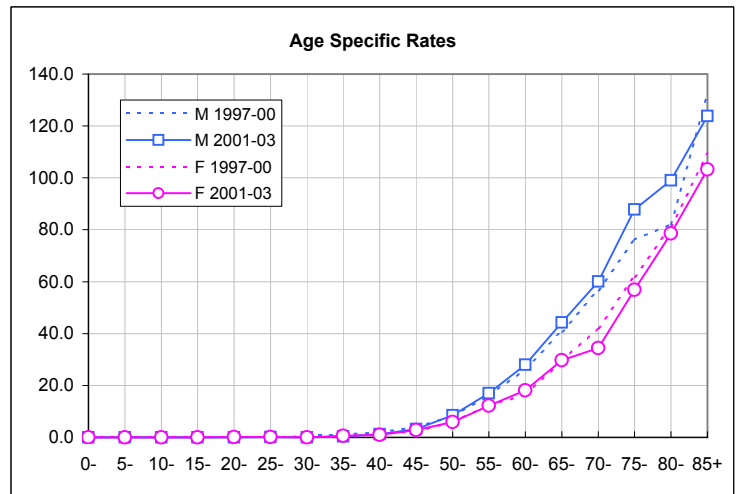
(3 last periods)



CH Switzerland  
SA Alemannic part of Switzerland: German-speaking  
SL Latin part of Switzerland: French- or Italian-speaking

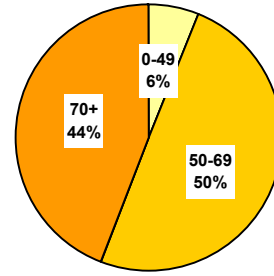
Age specific rates - last periods compared

Age	M		F	
	1997-00	2001-03	1997-00	2001-03
0-	0.0	0.0	0.0	0.0
5-	0.0	0.0	0.0	0.0
10-	0.0	0.0	0.0	0.0
15-	0.0	0.0	0.0	0.0
20-	0.0	0.0	0.0	0.2
25-	0.0	0.1	0.2	0.1
30-	0.5	0.0	0.2	0.0
35-	1.2	0.3	0.3	0.6
40-	2.0	1.3	1.3	1.0
45-	4.0	3.2	2.3	2.9
50-	8.2	8.5	5.9	5.9
55-	16.0	17.1	12.4	12.2
60-	26.4	28.0	16.5	18.2
65-	40.9	44.3	29.5	29.7
70-	56.7	60.1	42.1	34.4
75-	76.1	87.8	62.0	56.8
80-	82.1	99.1	81.2	78.5
85+	132.0	123.9	109.3	103.2
Crude rate	11.5	12.8	12.6	12.4



Number of deaths - three last periods

Sex	Period	Age group			Total	Yearly average
		0-49	50-69	70+		
Male	1993-96	25	169	136	330	83
	1997-00	16	160	126	302	76
	2001-03	10	127	105	242	81
Female	1993-96	5	14	25	43	11
	1997-00	1	15	33	49	12
	2001-03	3	18	20	41	14
Total	Total	60	503	444	1'007	92

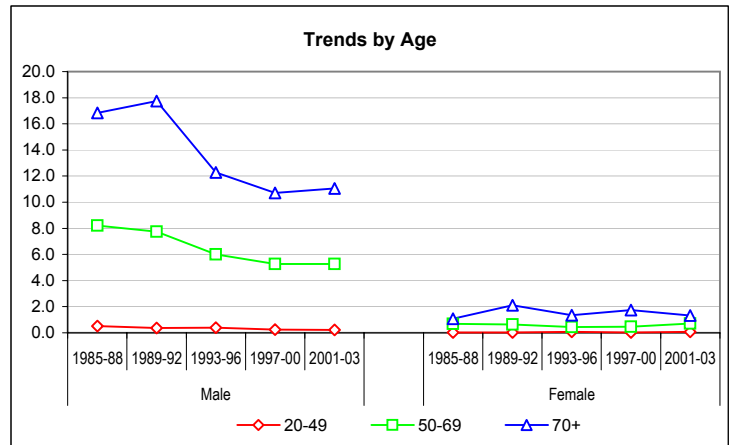


Crude rates by age-group & mean annual trends

\*, \*\*: Significant variations cf. Mantel-Haenszel test (95%, 99%)  
Signification of mean annual trends not computed

Sex	Period	0-19	20-49	50-69	70+
Male	1985-88	0.00	0.51	8.20	16.85 *
	1989-92	0.00	0.36	7.75	17.74
	1993-96	0.00	0.40	6.01 *	12.27 **
	1997-00	0.00	0.25	5.28	10.72
	2001-03	0.00	0.21	5.28	11.06
Female	1985-88	0.00	0.02	0.69	1.08
	1989-92	0.00	0.03	0.63	2.10 *
	1993-96	0.00	0.08	0.45	1.36
	1997-00	0.00	0.02	0.47	1.73
	2001-03	0.00	0.06	0.72	1.33
Male	Annual trend		0.912	0.981	0.984
Female	Annual trend		0.952	1.067	1.001

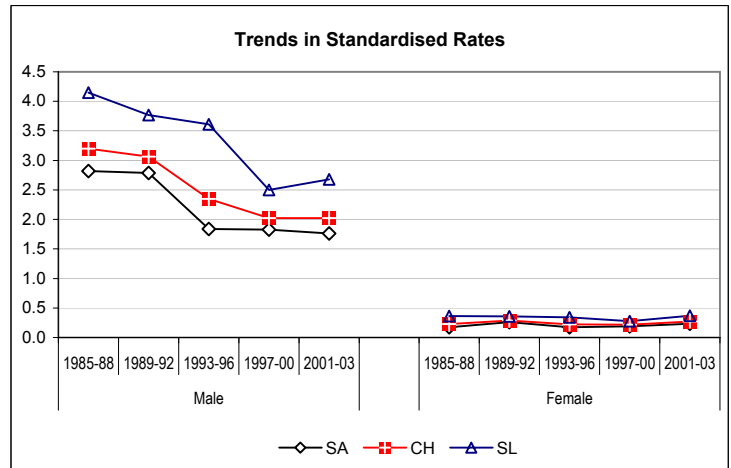
(3 last periods)



European standardized rate by period

Sex	Period	SA	CH	SL	C.I. 95% of CH	
Male	1985-88	2.82	3.20	4.15	2.9	3.5
	1989-92	2.79	3.06	3.77	2.8	3.4
	1993-96	1.84	2.35	3.61	2.1	2.6
	1997-00	1.83	2.02	2.50	1.8	2.3
	2001-03	1.76	2.02	2.68	1.8	2.3
Female	1985-88	0.17	0.23	0.36	0.2	0.3
	1989-92	0.26	0.29	0.36	0.2	0.4
	1993-96	0.17	0.22	0.34	0.2	0.3
	1997-00	0.19	0.21	0.28	0.2	0.3
	2001-03	0.23	0.27	0.37	0.2	0.3
Male	Annual trend	0.994	0.978	0.955		
Female	Annual trend	1.043	1.028	1.007		

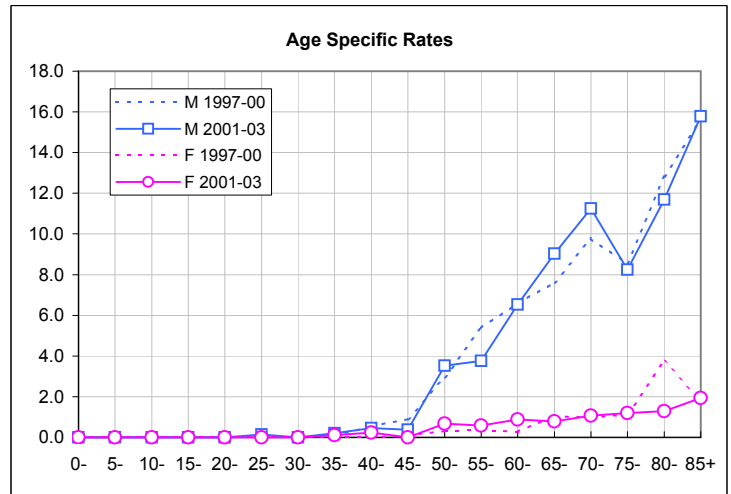
(3 last periods)



CH Switzerland  
SA Alemannic part of Switzerland: German-speaking  
SL Latin part of Switzerland: French- or Italian-speaking

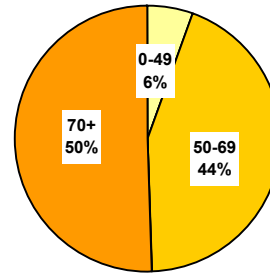
Age specific rates - last periods compared

Age	M		F	
	1997-00	2001-03	1997-00	2001-03
0-	0.0	0.0	0.0	0.0
5-	0.0	0.0	0.0	0.0
10-	0.0	0.0	0.0	0.0
15-	0.0	0.0	0.0	0.0
20-	0.0	0.0	0.0	0.0
25-	0.0	0.1	0.0	0.0
30-	0.0	0.0	0.0	0.0
35-	0.1	0.2	0.0	0.1
40-	0.6	0.5	0.0	0.2
45-	0.9	0.4	0.1	0.0
50-	3.0	3.5	0.3	0.7
55-	5.4	3.8	0.4	0.6
60-	6.6	6.5	0.3	0.9
65-	7.6	9.0	1.0	0.8
70-	9.8	11.2	1.0	1.1
75-	8.6	8.2	1.1	1.2
80-	12.8	11.7	3.8	1.3
85+	15.6	15.8	1.8	1.9
Crude rate	2.2	2.3	0.3	0.4



Number of deaths - three last periods

Sex	Period	Age group			Total	Yearly average
		0-49	50-69	70+		
Male	1993-96	401	3'645	4'055	<b>8'101</b>	<b>2'025</b>
	1997-00	360	3'501	4'097	<b>7'958</b>	<b>1'990</b>
	2001-03	248	2'541	3'178	<b>5'967</b>	<b>1'989</b>
Female	1993-96	211	1'029	1'143	<b>2'382</b>	<b>595</b>
	1997-00	230	1'179	1'350	<b>2'759</b>	<b>690</b>
	2001-03	176	1'034	1'111	<b>2'321</b>	<b>774</b>
Total	Total	<b>1'625</b>	<b>12'929</b>	<b>14'934</b>	<b>29'488</b>	<b>2'681</b>

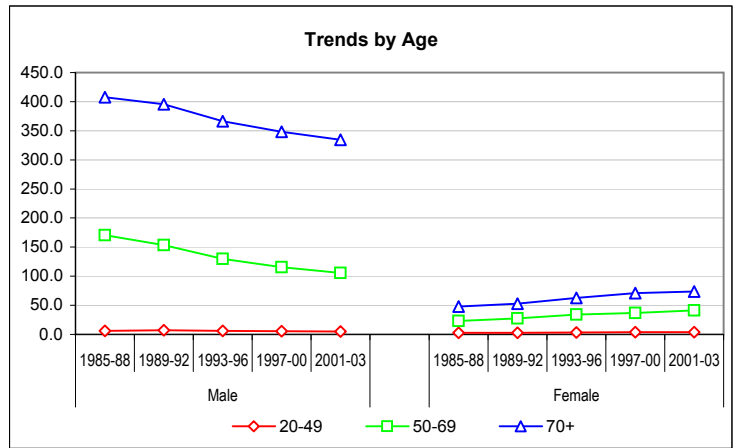


Crude rates by age-group & mean annual trends

\*, \*\*: Significant variations cf. Mantel-Haenszel test (95%, 99%)  
Signification of mean annual trends not computed

Sex	Period	0-19	20-49	50-69	70+
Male	1985-88	0.03	6.27	170.34	407.74
	1989-92	0.03	6.96	153.41 **	395.65
	1993-96	0.03	6.22	129.66 **	366.51 **
	1997-00	0.00	5.70	115.45 **	348.49 *
	2001-03	0.04	5.15	105.56 **	334.62
Female	1985-88	0.00	2.57	23.16 *	47.97
	1989-92	0.03	2.91	27.75 **	52.96 *
	1993-96	0.00	3.33	34.06 **	62.80 **
	1997-00	0.00	3.67	36.98 *	70.73 **
	2001-03	0.00	3.69	41.37 **	73.68
Male	Annual trend		0.974	0.971	0.987
Female	Annual trend		1.016	1.028	1.023

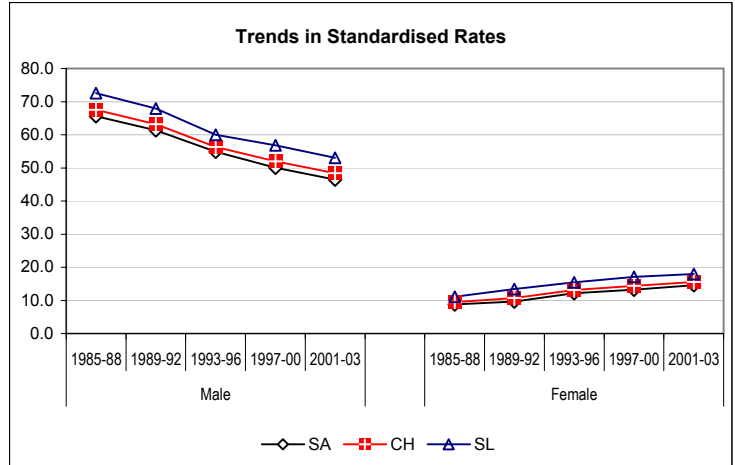
( 3 last periods )



European standardized rate by period

Sex	Period	SA	CH	SL	C.I. 95% of CH	
Male	1985-88	65.57	67.54	72.52	66.1	69.0
	1989-92	61.32	63.21	67.93	61.9	64.6
	1993-96	54.84	56.31	59.99	55.1	57.6
	1997-00	50.08	52.01	56.85	50.9	53.2
	2001-03	46.50	48.37	53.07	47.1	49.6
Female	1985-88	8.75	9.43	11.11	8.9	9.9
	1989-92	9.69	10.77	13.42	10.3	11.3
	1993-96	12.17	13.11	15.43	12.6	13.7
	1997-00	13.27	14.38	17.09	12.6	13.7
	2001-03	14.60	15.58	17.97	13.8	15.0
Male	Annual trend	0.977	0.979	0.983		
Female	Annual trend	1.026	1.025	1.022		

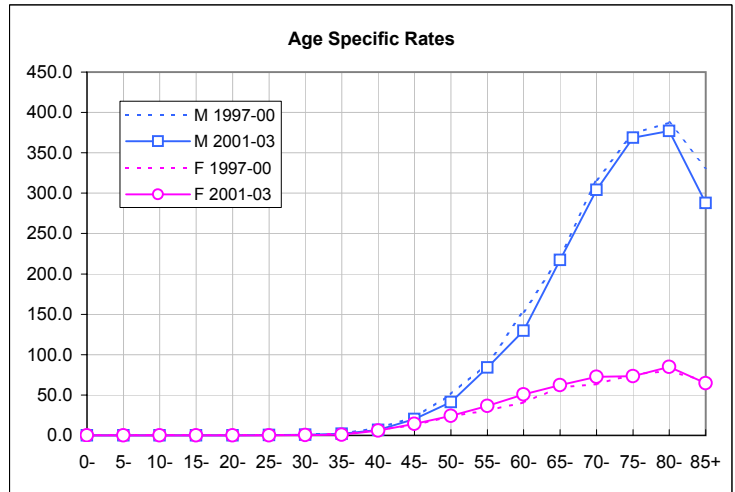
( 3 last periods )



CH Switzerland  
SA Alemannic part of Switzerland: German-speaking  
SL Latin part of Switzerland: French- or Italian-speaking

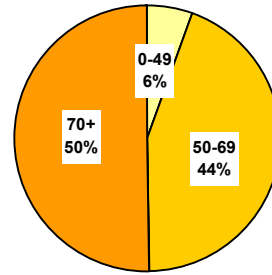
Age specific rates - last periods compared

Age	M		F	
	1997-00	2001-03	1997-00	2001-03
0-	0.0	0.2	0.0	0.0
5-	0.0	0.0	0.0	0.0
10-	0.0	0.0	0.0	0.0
15-	0.0	0.0	0.0	0.0
20-	0.1	0.0	0.0	0.0
25-	0.0	0.4	0.3	0.1
30-	0.8	1.0	0.4	0.6
35-	1.9	2.0	1.8	0.9
40-	9.7	6.7	7.0	6.0
45-	22.1	20.2	12.8	14.3
50-	51.2	41.2	23.7	24.1
55-	88.6	84.2	30.8	36.6
60-	153.5	129.6	41.0	50.8
65-	221.0	217.1	59.5	62.2
70-	316.9	304.0	63.4	72.5
75-	373.9	368.6	75.5	73.4
80-	387.5	376.9	80.1	85.0
85+	331.6	288.0	67.0	64.6
Crude rate	57.1	55.9	18.9	20.8



Number of deaths - three last periods

Sex	Period	Age group			Total	Yearly average
		0-49	50-69	70+		
Male	1993-96	24	149	145	318	80
	1997-00	9	122	137	268	67
	2001-03	6	119	113	238	79
Female	1993-96	9	25	47	81	20
	1997-00	6	16	29	51	13
	2001-03	2	13	34	49	16
Total	Total	56	444	505	1'005	91

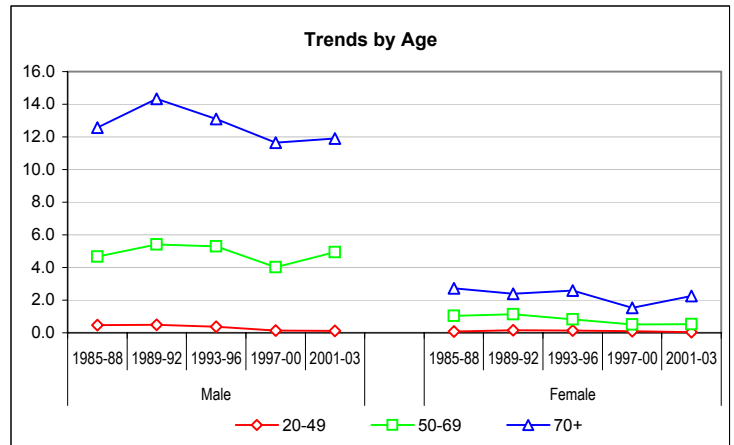


Crude rates by age-group & mean annual trends

\*, \*\*: Significant variations cf. Mantel-Haenszel test (95%, 99%)  
Signification of mean annual trends not computed

Sex	Period	0-19	20-49	50-69	70+
Male	1985-88	0.03	0.48	4.66	12.57
	1989-92	0.00	0.50	5.40	14.34
	1993-96	0.00	0.37	5.30	13.11
	1997-00	0.00	0.14 **	4.02 *	11.65
	2001-03	0.00	0.13	4.94	11.90
Female	1985-88	0.00	0.09	1.04	2.73
	1989-92	0.03	0.16	1.14	2.39
	1993-96	0.00	0.14	0.83	2.58
	1997-00	0.00	0.10	0.50	1.52 *
	2001-03	0.00	0.04	0.52	2.26
Male	Annual trend		0.852	0.987	0.985
Female	Annual trend		0.843	0.933	0.975

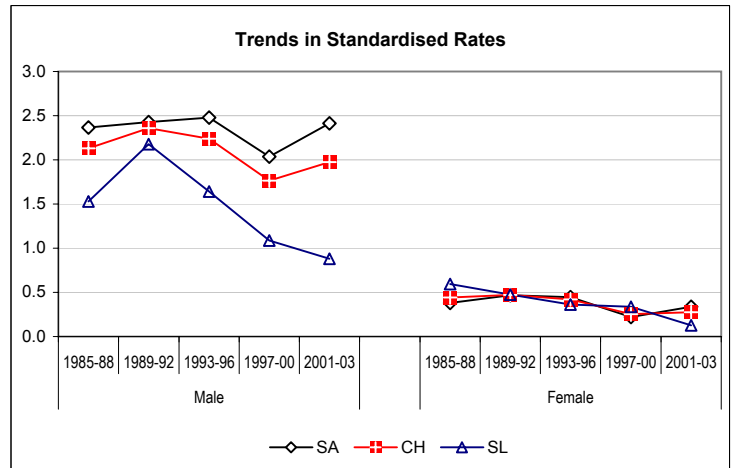
(3 last periods)



European standardized rate by period

Sex	Period	SA	CH	SL	C.I. 95% of CH	
Male	1985-88	2.37	2.13	1.53	1.9	2.4
	1989-92	2.43	2.36	2.18	2.1	2.6
	1993-96	2.48	2.24	1.64	2.0	2.5
	1997-00	2.04	1.76	1.09	1.6	2.0
	2001-03	2.41	1.98	0.88	1.7	2.2
Female	1985-88	0.38	0.44	0.59	0.3	0.6
	1989-92	0.47	0.47	0.48	0.4	0.6
	1993-96	0.45	0.42	0.36	0.3	0.5
	1997-00	0.22	0.25	0.34	0.3	0.5
	2001-03	0.34	0.27	0.13	0.2	0.3
Male	Annual trend	0.994	0.980	0.914		
Female	Annual trend	0.954	0.937	0.866		

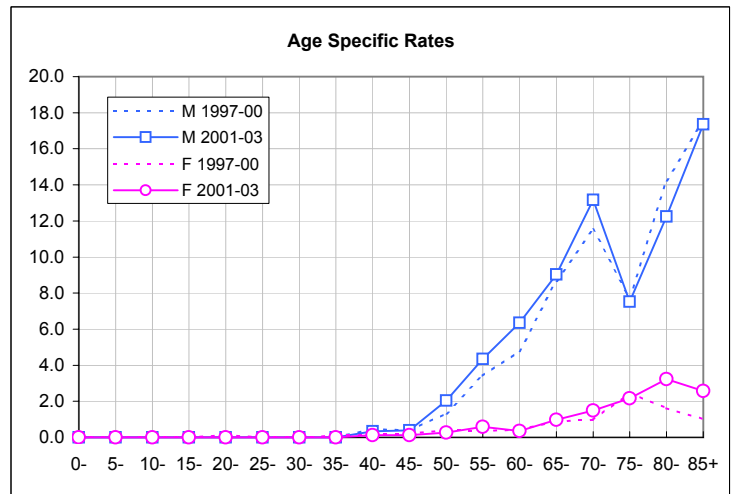
(3 last periods)



CH Switzerland  
SA Alemannic part of Switzerland: German-speaking  
SL Latin part of Switzerland: French- or Italian-speaking

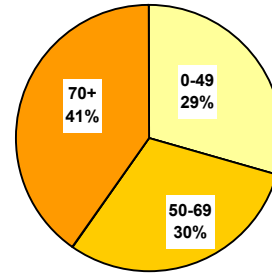
Age specific rates - last periods compared

Age	M		F	
	1997-00	2001-03	1997-00	2001-03
0-	0.0	0.0	0.0	0.0
5-	0.0	0.0	0.0	0.0
10-	0.0	0.0	0.0	0.0
15-	0.0	0.0	0.0	0.0
20-	0.0	0.0	0.1	0.0
25-	0.0	0.0	0.0	0.0
30-	0.0	0.0	0.0	0.0
35-	0.0	0.0	0.1	0.0
40-	0.5	0.3	0.2	0.1
45-	0.4	0.4	0.2	0.1
50-	1.3	2.0	0.4	0.3
55-	3.4	4.3	0.4	0.6
60-	4.8	6.3	0.4	0.4
65-	8.7	9.0	0.9	1.0
70-	11.5	13.2	1.0	1.5
75-	7.7	7.5	2.5	2.2
80-	14.2	12.2	1.6	3.2
85+	17.6	17.4	1.0	2.6
Crude rate	1.9	2.2	0.3	0.4



Number of deaths - three last periods

Sex	Period	Age group			Total	Yearly average
		0-49	50-69	70+		
Male	1993-96	21	31	21	73	18
	1997-00	27	31	33	91	23
	2001-03	19	20	12	51	17
Female	1993-96	19	9	29	57	14
	1997-00	19	16	37	72	18
	2001-03	11	13	27	51	17
Total	Total	116	120	159	395	36

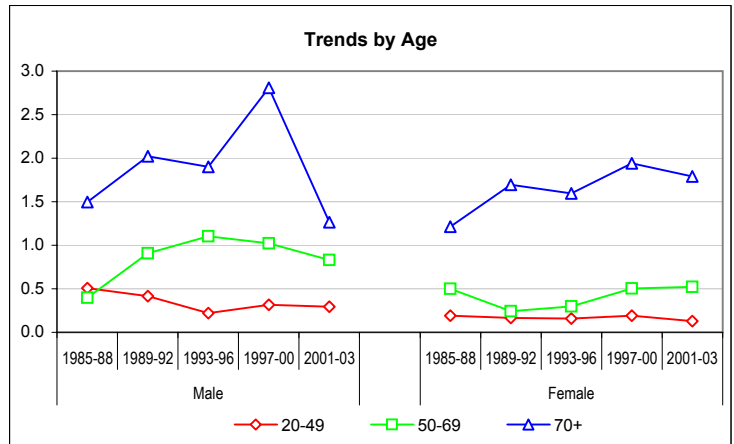


Crude rates by age-group & mean annual trends

\*, \*\*: Significant variations of cf. Mantel-Haenszel test (95%, 99%)  
Signification of mean annual trends not computed

Sex	Period	0-19	20-49	50-69	70+
Male	1985-88	0.37	0.51	0.40	1.50
	1989-92	0.34	0.42	0.91 *	2.02
	1993-96	0.21	0.22	1.10	1.90
	1997-00	0.21	0.32	1.02	2.81
	2001-03	0.20	0.29	0.83	1.26 *
Female	1985-88	0.42	0.19	0.50	1.21
	1989-92	0.20	0.16	0.24	1.69
	1993-96	0.28	0.16	0.30	1.59
	1997-00	0.22	0.19	0.50	1.94
	2001-03	0.21	0.13	0.52	1.79
Male	Annual trend		1.046	0.961	0.952
Female	Annual trend		0.972	1.086	1.019

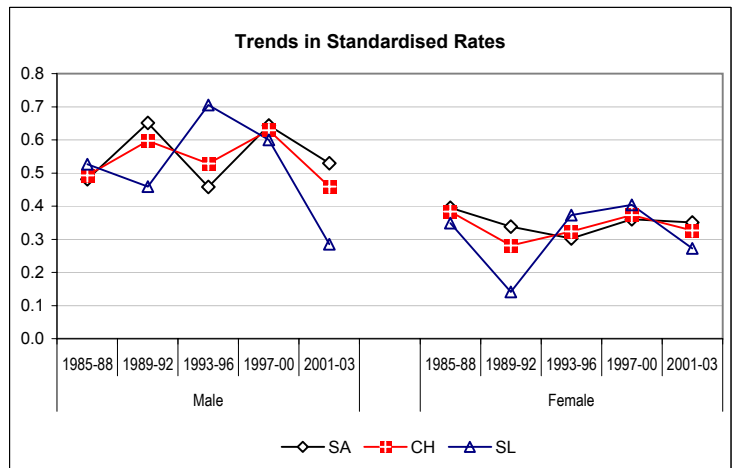
(3 last periods)



European standardized rate by period

Sex	Period	SA	CH	SL	C.I. 95% of CH	
Male	1985-88	0.48	0.49	0.53	0.4	0.6
	1989-92	0.65	0.60	0.46	0.5	0.7
	1993-96	0.46	0.53	0.71	0.4	0.7
	1997-00	0.64	0.63	0.60	0.5	0.8
	2001-03	0.53	0.46	0.28	0.3	0.6
Female	1985-88	0.39	0.38	0.35	0.3	0.5
	1989-92	0.34	0.28	0.14	0.2	0.4
	1993-96	0.30	0.32	0.37	0.2	0.4
	1997-00	0.36	0.37	0.40	0.2	0.4
	2001-03	0.35	0.33	0.27	0.3	0.5
Male	Annual trend	1.024	0.983	0.883		
Female	Annual trend	1.023	1.003	0.959		

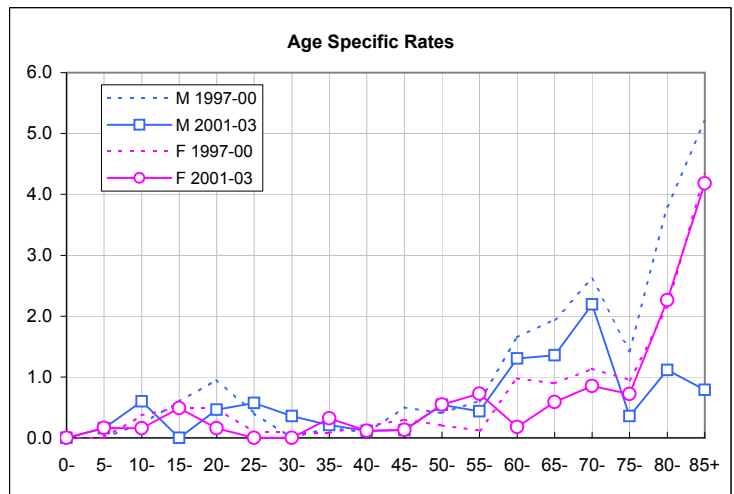
(3 last periods)



CH Switzerland  
SA Alemannic part of Switzerland: German-speaking  
SL Latin part of Switzerland: French- or Italian-speaking

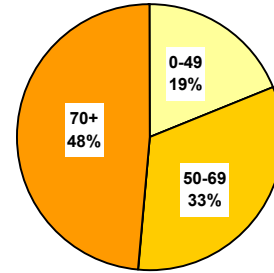
Age specific rates - last periods compared

Age	M		F	
	1997-00	2001-03	1997-00	2001-03
0-	0.0	0.0	0.0	0.0
5-	0.0	0.2	0.0	0.2
10-	0.2	0.6	0.4	0.2
15-	0.6	0.0	0.5	0.5
20-	1.0	0.5	0.5	0.2
25-	0.4	0.6	0.1	0.0
30-	0.0	0.4	0.1	0.0
35-	0.2	0.2	0.1	0.3
40-	0.1	0.1	0.2	0.1
45-	0.5	0.1	0.3	0.1
50-	0.4	0.5	0.2	0.5
55-	0.6	0.4	0.1	0.7
60-	1.6	1.3	1.0	0.2
65-	1.9	1.4	0.9	0.6
70-	2.6	2.2	1.1	0.9
75-	1.4	0.4	1.0	0.7
80-	3.8	1.1	2.1	2.3
85+	5.2	0.8	4.3	4.2
Crude rate	0.7	0.5	0.5	0.5



Number of deaths - three last periods

Sex	Period	Age group			Total	Yearly average
		0-49	50-69	70+		
Male	1993-96	43	52	56	151	38
	1997-00	30	54	69	153	38
	2001-03	28	56	69	153	51
Female	1993-96	32	50	69	151	38
	1997-00	26	54	115	195	49
	2001-03	20	42	82	144	48
Total	Total	179	308	460	947	86

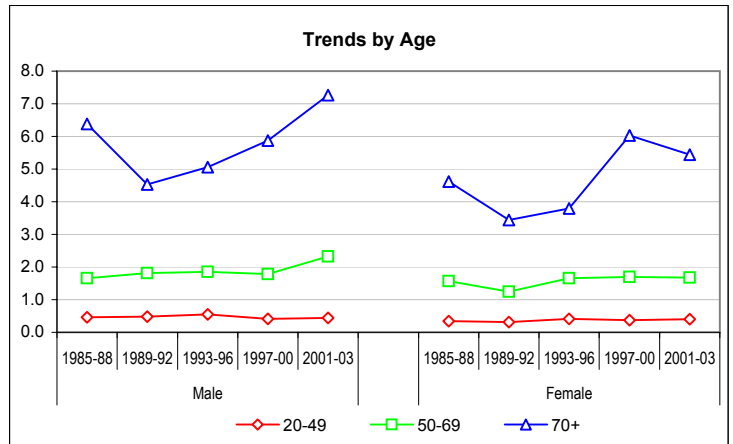


Crude rates by age-group & mean annual trends

\*, \*\*: Significant variations of cf. Mantel-Haenszel test (95%, 99%)  
Signification of mean annual trends not computed

Sex	Period	0-19	20-49	50-69	70+
Male	1985-88	0.27	0.46	1.66	6.39
	1989-92	0.03	0.48	1.81	4.52
	1993-96	0.24	0.55	1.85	5.06
	1997-00	0.12	0.41	1.78	5.87
	2001-03	0.28	0.44	2.33	7.27
Female	1985-88	0.19	0.35	1.57	4.61
	1989-92	0.16	0.31	1.24	3.44
	1993-96	0.19	0.41	1.66	3.79
	1997-00	0.09	0.37	1.69	6.03 **
	2001-03	0.04	0.40	1.68	5.44
Male	Annual trend		0.967	1.031	1.052
Female	Annual trend		0.994	1.002	1.057

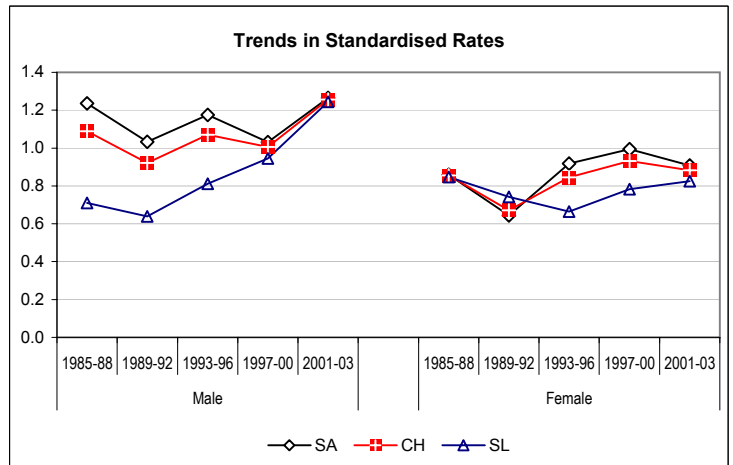
(3 last periods)



European standardized rate by period

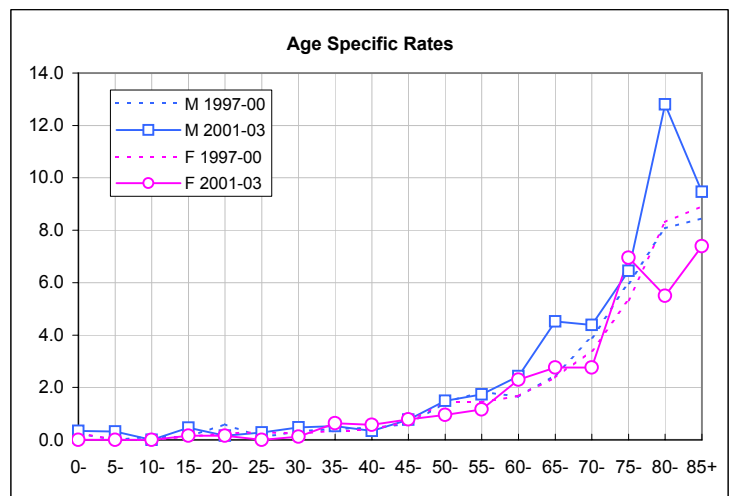
Sex	Period	SA	CH	SL	C.I. 95% of CH	
Male	1985-88	1.24	1.09	0.71	0.9	1.3
	1989-92	1.03	0.92	0.64	0.8	1.1
	1993-96	1.18	1.07	0.81	0.9	1.3
	1997-00	1.03	1.01	0.94	0.9	1.2
	2001-03	1.27	1.26	1.24	1.1	1.5
Female	1985-88	0.86	0.86	0.85	0.7	1.0
	1989-92	0.64	0.67	0.74	0.5	0.8
	1993-96	0.92	0.85	0.67	0.7	1.0
	1997-00	0.99	0.93	0.78	0.7	1.0
	2001-03	0.91	0.88	0.83	0.8	1.1
Male	Annual trend	1.008	1.021	1.061		
Female	Annual trend	1.000	1.007	1.032		

(3 last periods)



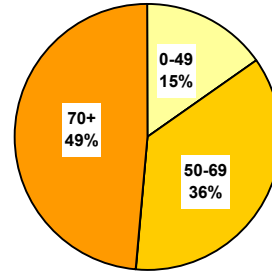
Age specific rates - last periods compared

Age	M		F	
	1997-00	2001-03	1997-00	2001-03
0-	0.2	0.3	0.3	0.0
5-	0.0	0.3	0.0	0.0
10-	0.1	0.0	0.0	0.0
15-	0.1	0.5	0.1	0.2
20-	0.6	0.2	0.2	0.2
25-	0.1	0.3	0.3	0.0
30-	0.3	0.5	0.2	0.1
35-	0.4	0.5	0.3	0.6
40-	0.5	0.3	0.4	0.6
45-	0.6	0.8	0.7	0.8
50-	1.4	1.5	1.4	1.0
55-	1.8	1.7	1.4	1.2
60-	1.6	2.4	1.7	2.3
65-	2.5	4.5	2.4	2.8
70-	3.9	4.4	3.4	2.8
75-	6.0	6.5	5.3	7.0
80-	8.1	12.8	8.3	5.5
85+	8.5	9.5	8.9	7.4
Crude rate	1.1	1.4	1.3	1.3



Number of deaths - three last periods

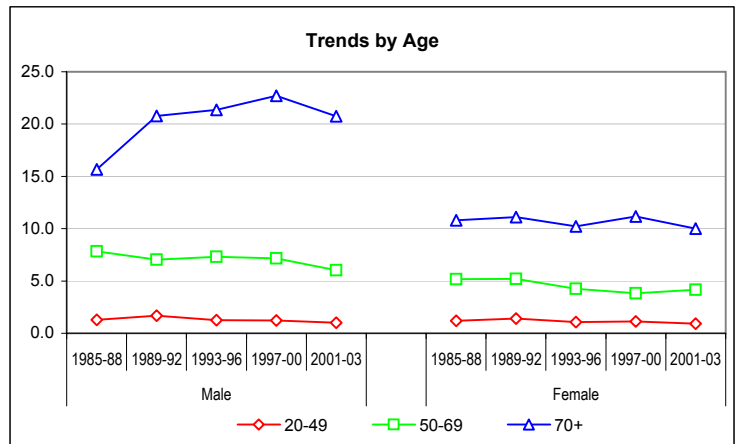
Sex	Period	Age group			Total	Yearly average
		0-49	50-69	70+		
Male	1993-96	82	205	236	524	131
	1997-00	77	217	267	561	140
	2001-03	49	145	197	391	130
Female	1993-96	70	129	186	385	96
	1997-00	71	122	213	406	102
	2001-03	46	104	151	301	100
Total	Total	395	922	1'250	2'568	233



Crude rates by age-group & mean annual trends

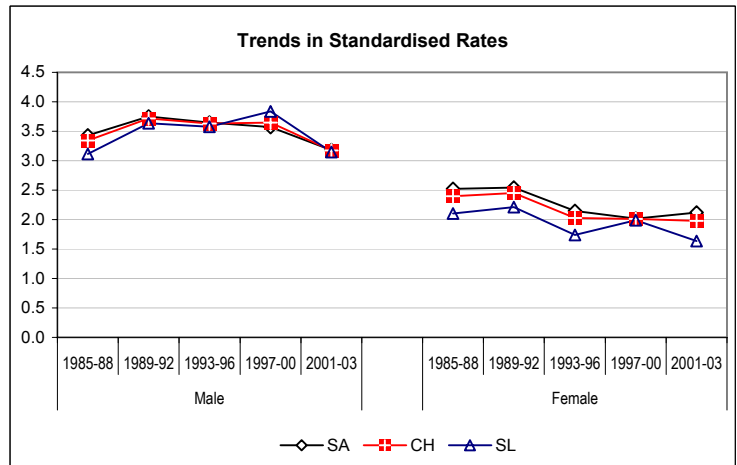
\*, \*\*: Significant variations of cf. Mantel-Haenszel test (95%, 99%)  
Signification of mean annual trends not computed

Sex	Period	0-19	20-49	50-69	70+
Male	1985-88	0.00	1.30 *	7.84 *	15.66
	1989-92	0.00	1.69	7.04	20.78 *
	1993-96	0.06	1.25 *	7.31	21.36
	1997-00	0.00	1.22	7.16	22.71
	2001-03	0.00	1.02	6.02	20.74
Female	1985-88	0.03	1.20	5.17	10.80
	1989-92	0.03	1.41	5.20	11.11
	1993-96	0.06	1.08	4.26	10.22
	1997-00	0.03	1.12	3.83	11.16
	2001-03	0.08	0.92	4.16	10.02
Male	Annual trend		0.973	0.974	0.997
Female	Annual trend		0.980	0.995	0.998



European standardized rate by period

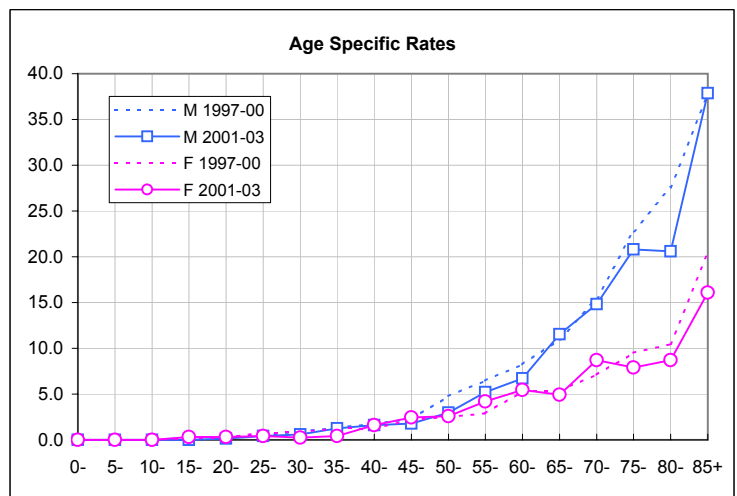
Sex	Period	SA	CH	SL	C.I. 95% of CH	
Male	1985-88	3.43	3.34	3.11	3.0	3.7
	1989-92	3.75	3.72	3.63	3.4	4.1
	1993-96	3.65	3.63	3.58	3.3	4.0
	1997-00	3.57	3.65	3.84	3.3	4.0
	2001-03	3.18	3.17	3.14	2.9	3.5
Female	1985-88	2.52	2.40	2.10	2.2	2.7
	1989-92	2.55	2.45	2.21	2.2	2.7
	1993-96	2.15	2.03	1.74	1.8	2.3
	1997-00	2.02	2.01	1.99	1.8	2.3
	2001-03	2.12	1.98	1.64	1.8	2.2
Male	Annual trend	0.981	0.982	0.984		
Female	Annual trend	0.997	0.996	0.994		



CH Switzerland  
SA Alemannic part of Switzerland: German-speaking  
SL Latin part of Switzerland: French- or Italian-speaking

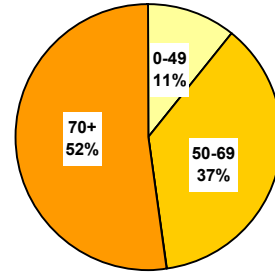
Age specific rates - last periods compared

Age	M		F	
	1997-00	2001-03	1997-00	2001-03
0-	0.0	0.0	0.0	0.0
5-	0.0	0.0	0.0	0.0
10-	0.0	0.0	0.0	0.0
15-	0.0	0.0	0.1	0.3
20-	0.4	0.2	0.2	0.3
25-	0.5	0.4	0.8	0.4
30-	0.9	0.6	0.8	0.2
35-	1.3	1.3	1.3	0.4
40-	1.7	1.6	1.2	1.6
45-	2.3	1.8	2.2	2.5
50-	4.8	3.0	2.5	2.6
55-	6.5	5.2	2.9	4.2
60-	8.2	6.7	5.3	5.5
65-	11.0	11.5	5.4	4.9
70-	15.4	14.8	7.1	8.7
75-	22.8	20.8	9.5	7.9
80-	27.5	20.6	10.4	8.7
85+	37.7	37.9	20.4	16.1
Crude rate	4.0	3.7	2.8	2.7



Number of deaths - three last periods

Sex	Period	Age group			Total	Yearly average
		0-49	50-69	70+		
Male	1993-96	1	13	25	39	10
	1997-00	0	15	24	39	10
	2001-03	1	7	11	19	6
Female	1993-96	687	2'199	2'994	5'881	1'470
	1997-00	572	1'966	2'837	5'375	1'344
	2001-03	397	1'501	2'167	4'065	1'355
Total	Total	1'658	5'701	8'058	15'418	1'402

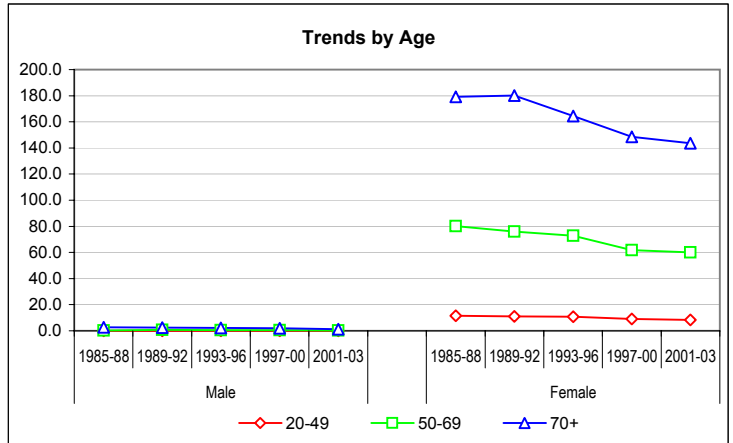


Crude rates by age-group & mean annual trends

\*, \*\*: Significant variations cf. Mantel-Haenszel test (95%, 99%)  
 Signification of mean annual trends not computed

Sex	Period	0-19	20-49	50-69	70+
Male	1985-88	0.00	0.02	0.28 *	2.60
	1989-92	0.00	0.08	0.64	2.50
	1993-96	0.00	0.02	0.46	2.26
	1997-00	0.00	0.00	0.50	2.04
	2001-03	0.00	0.02	0.29	1.16
Female	1985-88	0.00	11.48	80.13	179.06
	1989-92	0.00	11.03	75.91 *	180.23
	1993-96	0.00	10.86	72.83	164.56 **
	1997-00	0.00	9.12 **	61.67 **	148.63 **
	2001-03	0.00	8.33	60.05	143.72
Male	Annual trend		0.948	0.940	0.912
Female	Annual trend		0.963	0.972	0.981

( 3 last periods )

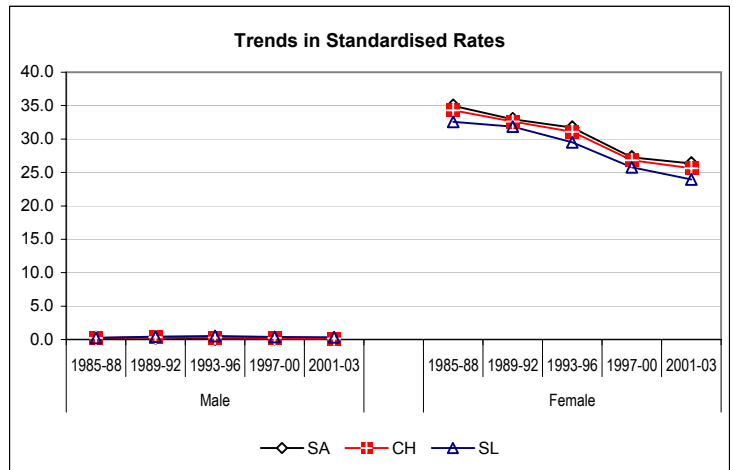


European standardized rate by period

Sex	Period	SA	CH	SL	C.I. 95% of CH	
					Lower	Upper
Male	1985-88	0.26	0.25	0.25	0.2	0.4
	1989-92	0.30	0.34	0.45	0.3	0.5
	1993-96	0.16	0.27	0.53	0.2	0.4
	1997-00	0.19	0.25	0.39	0.2	0.3
	2001-03	0.09	0.15	0.31	0.1	0.2
Female	1985-88	34.97	34.29	32.58	33.4	35.2
	1989-92	32.96	32.63	31.84	31.8	33.5
	1993-96	31.71	31.07	29.51	30.2	31.9
	1997-00	27.24	26.82	25.78	30.2	31.9
	2001-03	26.33	25.65	23.96	26.1	27.6
Male	Annual trend	0.923	0.926	0.927		
Female	Annual trend	0.973	0.972	0.970		

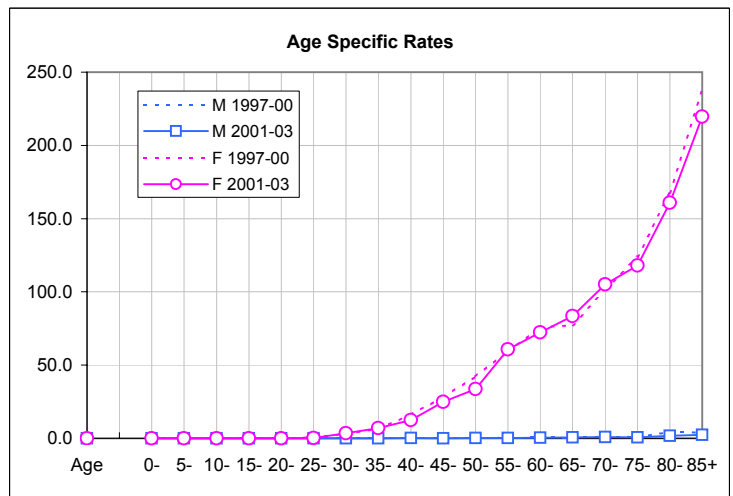
( 3 last periods )

CH Switzerland  
 SA Alemannic part of Switzerland: German-speaking  
 SL Latin part of Switzerland: French- or Italian-speaking



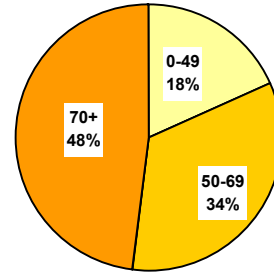
Age specific rates - last periods compared

Age	M		F	
	1997-00	2001-03	1997-00	2001-03
0-	0.0	0.0	0.0	0.0
5-	0.0	0.0	0.0	0.0
10-	0.0	0.0	0.0	0.0
15-	0.0	0.0	0.0	0.0
20-	0.0	0.0	0.1	0.0
25-	0.0	0.0	0.7	0.3
30-	0.0	0.0	3.2	3.5
35-	0.0	0.0	6.5	6.9
40-	0.0	0.1	16.1	12.4
45-	0.0	0.0	28.1	25.0
50-	0.6	0.1	42.4	33.7
55-	0.2	0.1	59.4	60.6
60-	0.9	0.4	75.6	72.4
65-	0.2	0.7	77.4	83.5
70-	1.3	0.8	101.5	105.0
75-	0.9	0.7	123.9	118.0
80-	4.3	1.7	167.7	160.9
85+	3.9	2.4	237.8	219.6
Crude rate	0.3	0.2	36.8	36.4



Number of deaths - three last periods

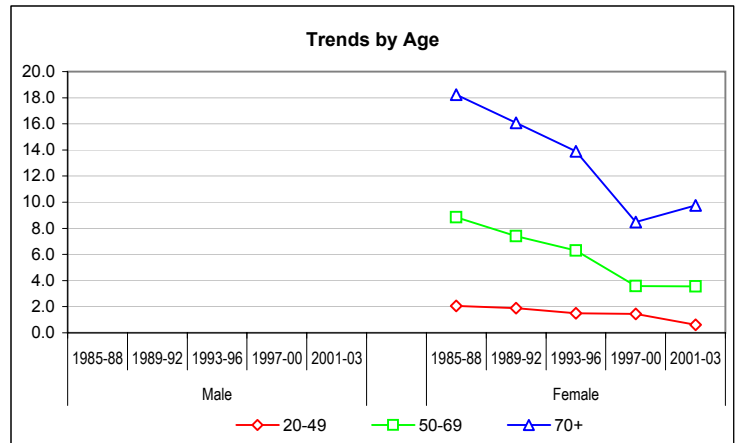
Sex	Period	Age group			Total	Yearly average
		0-49	50-69	70+		
Male	1993-96					
	1997-00					
	2001-03					
Female	1993-96	95	190	253	538	134
	1997-00	90	114	162	366	92
	2001-03	29	89	147	265	88
Total	Total	214	393	562	1169	106



Crude rates by age-group & mean annual trends

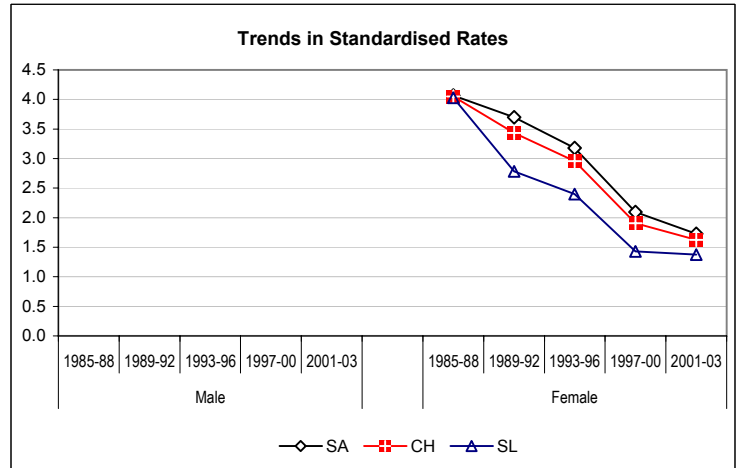
\*, \*\*: Significant variations cf. Mantel-Haenszel test (95%, 99%)  
Signification of mean annual trends not computed

Sex	Period	0-19	20-49	50-69	70+
Male	1985-88				
	1989-92				
	1993-96				
	1997-00				
	2001-03				
Female	1985-88	0.00	2.07 *	8.86 **	18.23
	1989-92	0.00	1.88	7.39 *	16.08
	1993-96	0.03	1.49	6.29	13.89
	1997-00	0.00	1.44	3.58 **	8.49 **
	2001-03	0.00	0.61 **	3.56	9.75
Male	Annual trend				
Female	Annual trend (3 last periods)		0.886	0.919	0.947



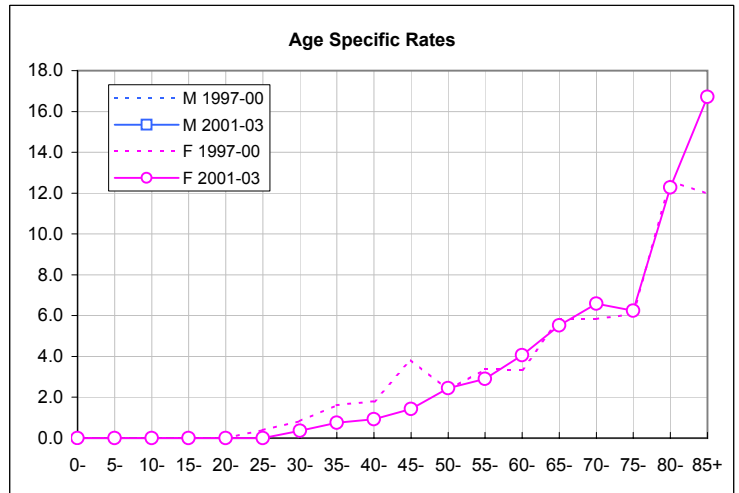
European standardized rate by period

Sex	Period	SA	CH	SL	C.I. 95% of CH	
Male	1985-88					
	1989-92					
	1993-96					
	1997-00					
	2001-03					
Female	1985-88	4.07	4.05	4.03	3.7	4.4
	1989-92	3.70	3.44	2.79	3.2	3.7
	1993-96	3.18	2.95	2.40	2.7	3.2
	1997-00	2.10	1.90	1.43	2.7	3.2
	2001-03	1.72	1.62	1.37	1.7	2.1
Male	Annual trend					
Female	Annual trend (3 last periods)	0.915	0.917	0.921		
CH	Switzerland					
SA	Alemannic part of Switzerland: German-speaking					
SL	Latin part of Switzerland: French- or Italian-speaking					



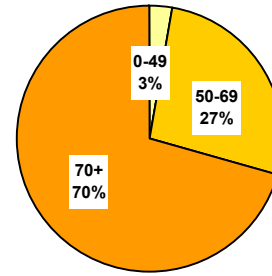
Age specific rates - last periods compared

Age	M		F	
	1997-00	2001-03	1997-00	2001-03
0-			0.0	0.0
5-			0.0	0.0
10-			0.0	0.0
15-			0.0	0.0
20-			0.0	0.0
25-			0.4	0.0
30-			0.8	0.4
35-			1.6	0.7
40-			1.8	0.9
45-			3.8	1.4
50-			2.4	2.5
55-			3.4	2.9
60-			3.3	4.1
65-			5.8	5.5
70-			5.8	6.6
75-			6.1	6.2
80-			12.6	12.3
85+			12.0	16.7
Crude rate			2.5	2.4



Number of deaths - three last periods

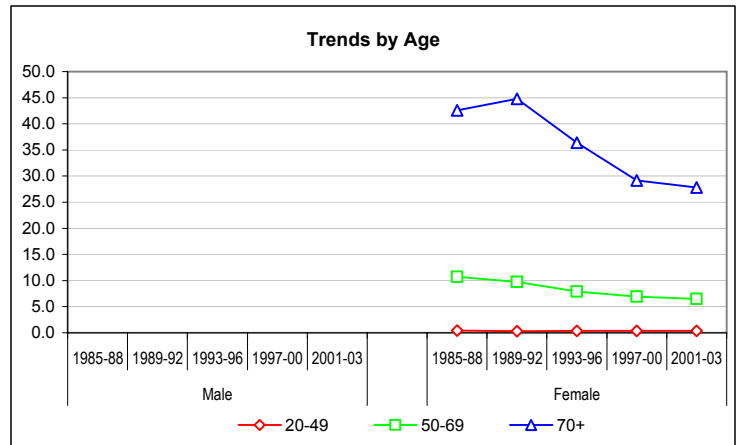
Sex	Period	Age group			Total	Yearly average
		0-49	50-69	70+		
Male	1993-96					
	1997-00					
	2001-03					
Female	1993-96	23	239	662	924	231
	1997-00	24	221	557	802	201
	2001-03	17	163	419	599	200
Total	Total	64	623	1'638	2'325	211



Crude rates by age-group & mean annual trends

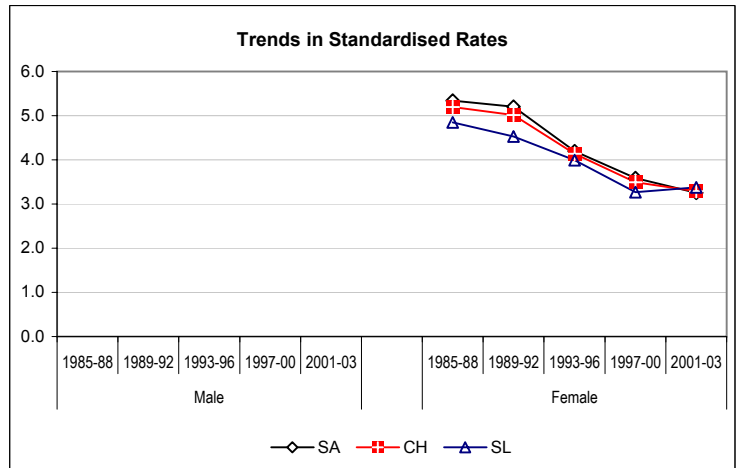
\*, \*\*: Significant variations cf. Mantel-Haenszel test (95%, 99%)  
Signification of mean annual trends not computed

Sex	Period	0-19	20-49	50-69	70+
Male	1985-88				
	1989-92				
	1993-96				
	1997-00				
	2001-03				
Female	1985-88	0.00	0.42	10.72	42.61
	1989-92	0.00	0.30	9.74	44.80
	1993-96	0.00	0.36	7.92 *	36.40 **
	1997-00	0.00	0.38	6.93	29.18 **
	2001-03	0.00	0.36	6.52	27.79
Male	Annual trend				
Female	Annual trend (3 last periods)		1.000	0.972	0.961



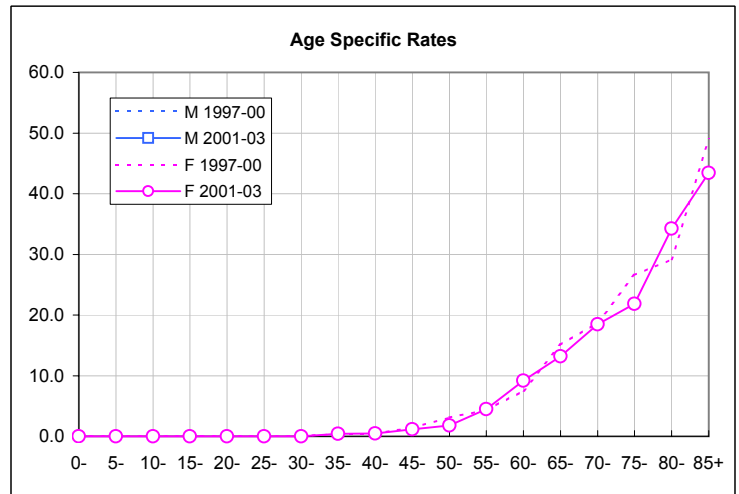
European standardized rate by period

Sex	Period	SA	CH	SL	C.I. 95% of CH	
Male	1985-88					
	1989-92					
	1993-96					
	1997-00					
	2001-03					
Female	1985-88	5.34	5.20	4.85	4.9	5.5
	1989-92	5.21	5.01	4.53	4.7	5.3
	1993-96	4.19	4.14	3.99	3.9	4.4
	1997-00	3.59	3.50	3.27	3.9	4.4
	2001-03	3.26	3.29	3.38	3.2	3.8
Male	Annual trend					
Female	Annual trend (3 last periods)	0.964	0.967	0.975		
CH	Switzerland					
SA	Alemannic part of Switzerland: German-speaking					
SL	Latin part of Switzerland: French- or Italian-speaking					



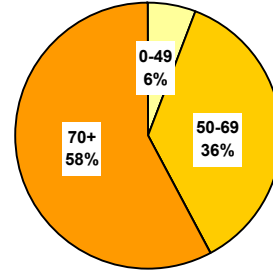
Age specific rates - last periods compared

Age	M		F	
	1997-00	2001-03	1997-00	2001-03
0-			0.0	0.0
5-			0.0	0.0
10-			0.0	0.0
15-			0.0	0.0
20-			0.0	0.0
25-			0.0	0.0
30-			0.1	0.0
35-			0.3	0.4
40-			0.5	0.5
45-			1.4	1.2
50-			3.1	1.8
55-			4.3	4.5
60-			7.5	9.2
65-			15.1	13.2
70-			18.8	18.5
75-			26.6	21.8
80-			29.2	34.2
85+			48.9	43.4
Crude rate			5.5	5.4



Number of deaths - three last periods

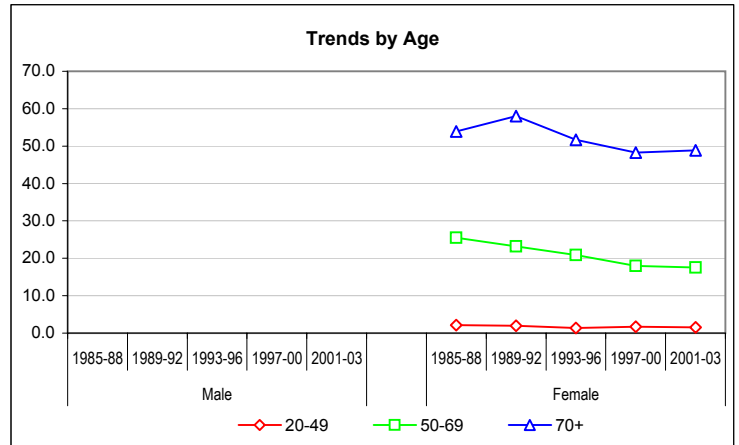
Sex	Period	Age group			Total	Yearly average
		0-49	50-69	70+		
Male	1993-96					
	1997-00					
	2001-03					
Female	1993-96	87	630	941	1'658	415
	1997-00	106	572	922	1'600	400
	2001-03	73	439	737	1'249	416
Total	Total	266	1'641	2'600	4'507	410



Crude rates by age-group & mean annual trends

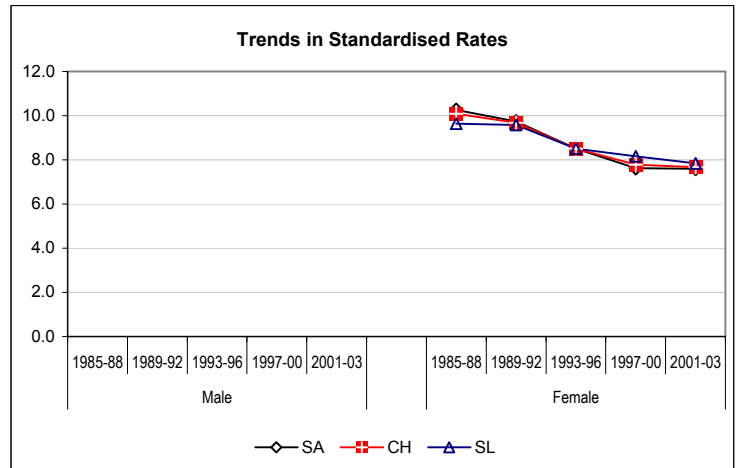
\*, \*\*: Significant variations cf. Mantel-Haenszel test (95%, 99%)  
Signification of mean annual trends not computed

Sex	Period	0-19	20-49	50-69	70+
Male	1985-88				
	1989-92				
	1993-96				
	1997-00				
	2001-03				
Female	1985-88	0.10	2.15	25.54	53.95
	1989-92	0.03	1.94	23.23	58.03
	1993-96	0.00	1.38 *	20.87	51.71 *
	1997-00	0.03	1.68	17.94 *	48.31
	2001-03	0.00	1.53	17.56	48.88
Male	Annual trend				
Female	Annual trend (3 last periods)		1.017	0.975	0.992



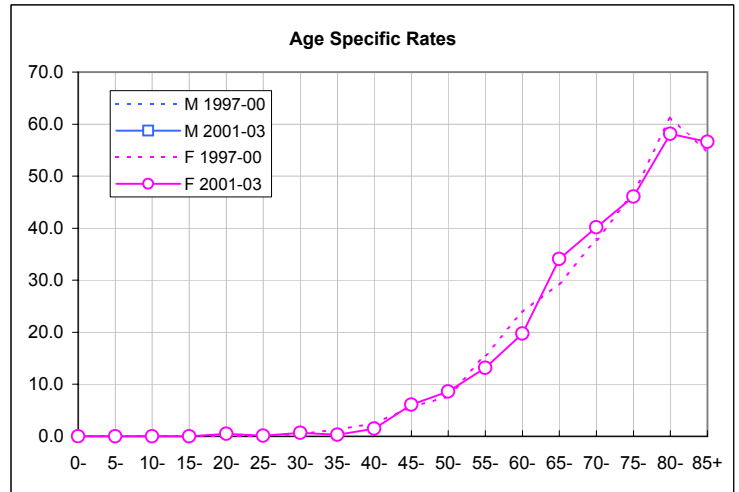
European standardized rate by period

Sex	Period	SA	CH	SL	C.I. 95% of CH	
Male	1985-88					
	1989-92					
	1993-96					
	1997-00					
	2001-03					
Female	1985-88	10.27	10.09	9.64	9.6	10.6
	1989-92	9.73	9.69	9.58	9.2	10.2
	1993-96	8.51	8.51	8.51	8.1	9.0
	1997-00	7.63	7.78	8.16	8.1	9.0
	2001-03	7.59	7.66	7.84	7.4	8.2
Male	Annual trend					
Female	Annual trend (3 last periods)	0.983	0.985	0.988		
CH	Switzerland					
SA	Alemannic part of Switzerland: German-speaking					
SL	Latin part of Switzerland: French- or Italian-speaking					



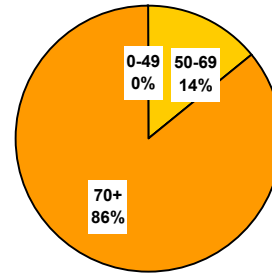
Age specific rates - last periods compared

Age	M		F	
	1997-00	2001-03	1997-00	2001-03
0-			0.0	0.0
5-			0.0	0.0
10-			0.0	0.0
15-			0.1	0.0
20-			0.0	0.5
25-			0.2	0.1
30-			0.4	0.7
35-			1.4	0.3
40-			2.5	1.5
45-			5.6	6.1
50-			7.6	8.6
55-			15.6	13.2
60-			23.9	19.7
65-			29.4	34.1
70-			37.8	40.2
75-			46.8	46.1
80-			61.3	58.2
85+			54.5	56.6
Crude rate			11.0	11.2



Number of deaths - three last periods

Sex	Period	Age group			Total	Yearly average
		0-49	50-69	70+		
Male	1993-96	7	733	4'310	<b>5'050</b>	<b>1'263</b>
	1997-00	5	728	4'478	<b>5'211</b>	<b>1'303</b>
	2001-03	3	522	3'378	<b>3'903</b>	<b>1'301</b>
Female	1993-96					
	1997-00					
	2001-03					
Total	Total	<b>15</b>	<b>1'983</b>	<b>12'166</b>	<b>14'164</b>	<b>1'288</b>

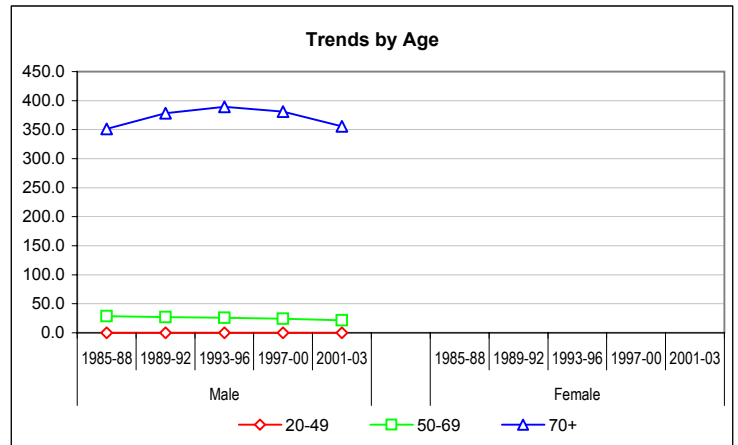


Crude rates by age-group & mean annual trends

\*, \*\*: Significant variations cf. Mantel-Haenszel test (95%, 99%)  
Signification of mean annual trends not computed

Sex	Period	0-19	20-49	50-69	70+
Male	1985-88	0.00	0.17	28.60	351.48
	1989-92	0.00	0.15	26.82	378.44
	1993-96	0.00	0.11	26.07	389.58
	1997-00	0.00	0.08	24.01	380.90
	2001-03	0.00	0.06	21.69	355.68 **
Female	1985-88				
	1989-92				
	1993-96				
	1997-00				
	2001-03				
Male	Annual trend		0.925	0.974	0.987
Female	Annual trend				

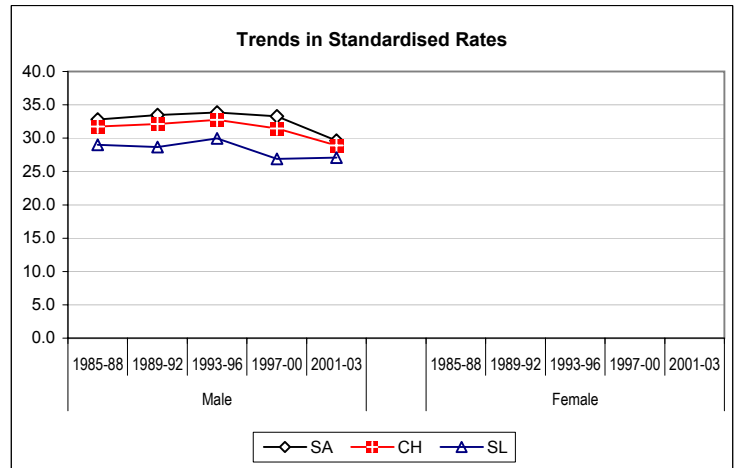
(3 last periods)



European standardized rate by period

Sex	Period	SA	CH	SL	C.I. 95% of CH	
Male	1985-88	32.81	31.74	28.99	30.8	32.7
	1989-92	33.48	32.11	28.67	31.2	33.1
	1993-96	33.86	32.73	29.95	31.8	33.7
	1997-00	33.27	31.45	26.91	30.6	32.3
	2001-03	29.65	28.92	27.08	28.0	29.9
Female	1985-88					
	1989-92					
	1993-96					
	1997-00					
	2001-03					
Male	Annual trend	0.982	0.983	0.985		
Female	Annual trend					

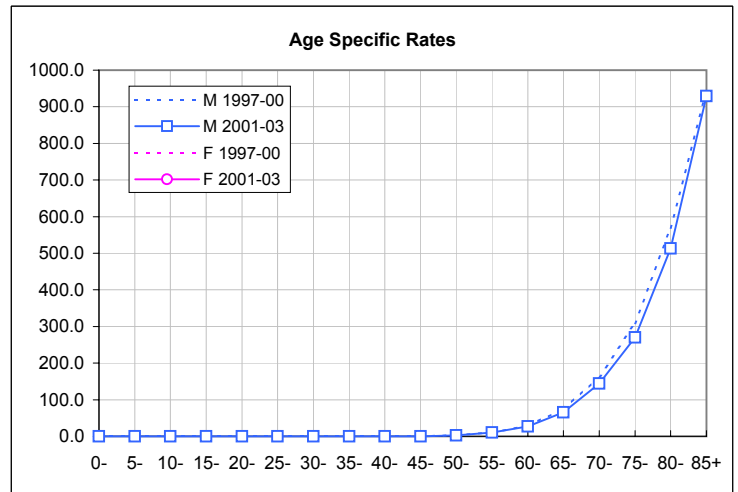
(3 last periods)



CH Switzerland  
SA Alemannic part of Switzerland: German-speaking  
SL Latin part of Switzerland: French- or Italian-speaking

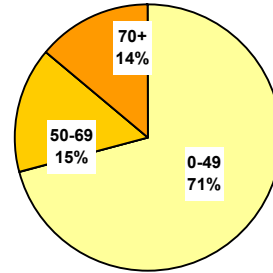
Age specific rates - last periods compared

Age	M		F	
	1997-00	2001-03	1997-00	2001-03
0-	0.0	0.0		
5-	0.0	0.0		
10-	0.0	0.0		
15-	0.0	0.0		
20-	0.0	0.0		
25-	0.0	0.0		
30-	0.0	0.0		
35-	0.0	0.0		
40-	0.1	0.1		
45-	0.4	0.3		
50-	3.4	2.3		
55-	10.1	10.3		
60-	29.1	27.1		
65-	74.0	65.3		
70-	162.5	144.0		
75-	308.4	270.4		
80-	569.3	512.8		
85+	942.1	929.5		
Crude rate	37.4	36.6		



Number of deaths - three last periods

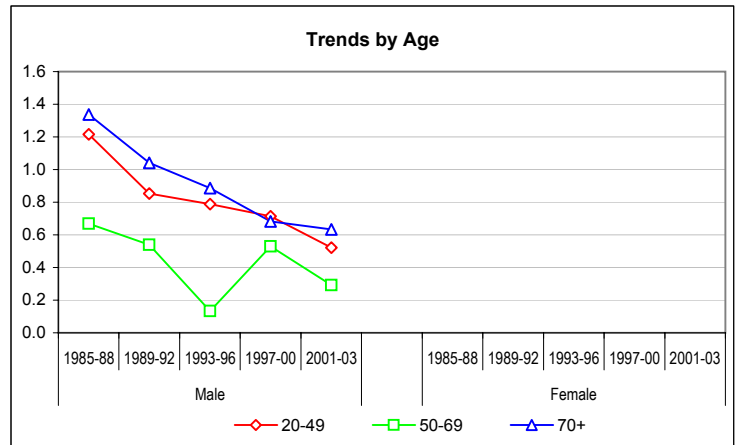
Sex	Period	Age group			Total	Yearly average
		0-49	50-69	70+		
Male	1993-96	51	4	10	64	16
	1997-00	45	16	8	69	17
	2001-03	27	7	6	40	13
Female	1993-96					
	1997-00					
	2001-03					
Total	Total	123	27	24	173	16



Crude rates by age-group & mean annual trends

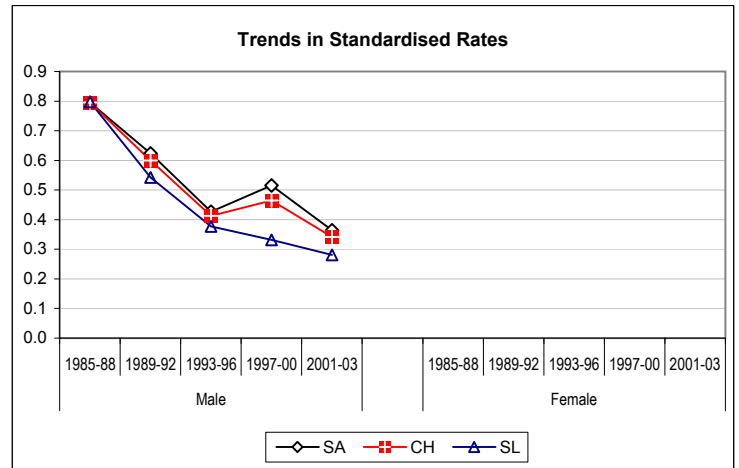
\*, \*\*: Significant variations cf. Mantel-Haenszel test (95%, 99%)  
Signification of mean annual trends not computed

Sex	Period	0-19	20-49	50-69	70+
Male	1985-88	0.14	1.22	0.67	1.34
	1989-92	0.17	0.85 *	0.54	1.04
	1993-96	0.00	0.79	0.13 **	0.89
	1997-00	0.00	0.71	0.53 **	0.68
	2001-03	0.08	0.52	0.29	0.63
Female	1985-88				
	1989-92				
	1993-96				
	1997-00				
	2001-03				
Male Annual trend		0.945	1.134	0.952	
Female Annual trend					
(3 last periods)					



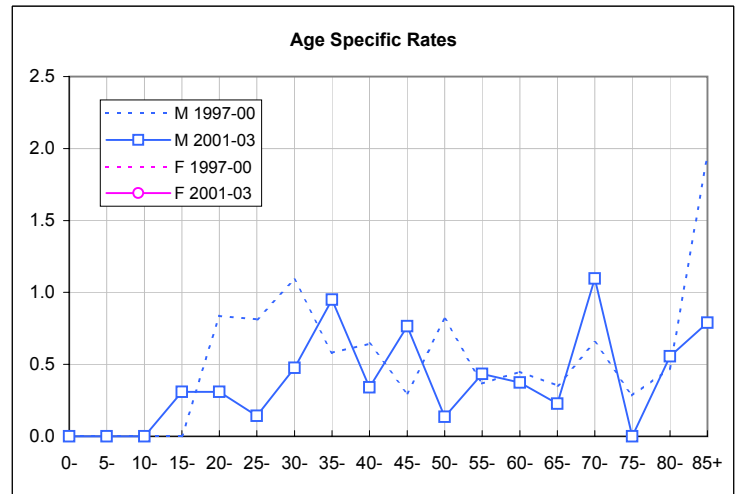
European standardized rate by period

Sex	Period	SA	CH	SL	C.I. 95% of CH	
Male	1985-88	0.79	0.80	0.80	0.6	1.0
	1989-92	0.62	0.60	0.54	0.5	0.7
	1993-96	0.43	0.41	0.38	0.3	0.5
	1997-00	0.52	0.46	0.33	0.4	0.6
	2001-03	0.36	0.34	0.28	0.2	0.5
Female	1985-88					
	1989-92					
	1993-96					
	1997-00					
	2001-03					
Male Annual trend	0.981	0.976	0.959			
Female Annual trend						
(3 last periods)						
CH	Switzerland					
SA	Alemannic part of Switzerland: German-speaking					
SL	Latin part of Switzerland: French- or Italian-speaking					



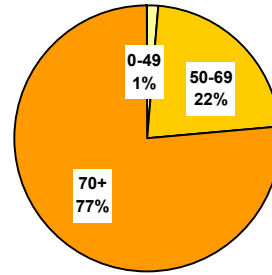
Age specific rates - last periods compared

Age	M		F	
	1997-00	2001-03	1997-00	2001-03
0-	0.0	0.0		
5-	0.0	0.0		
10-	0.0	0.0		
15-	0.0	0.3		
20-	0.8	0.3		
25-	0.8	0.1		
30-	1.1	0.5		
35-	0.6	0.9		
40-	0.6	0.3		
45-	0.3	0.8		
50-	0.8	0.1		
55-	0.4	0.4		
60-	0.4	0.4		
65-	0.4	0.2		
70-	0.7	1.1		
75-	0.3	0.0		
80-	0.5	0.6		
85+	2.0	0.8		
Crude rate	0.5	0.4		



Number of deaths - three last periods

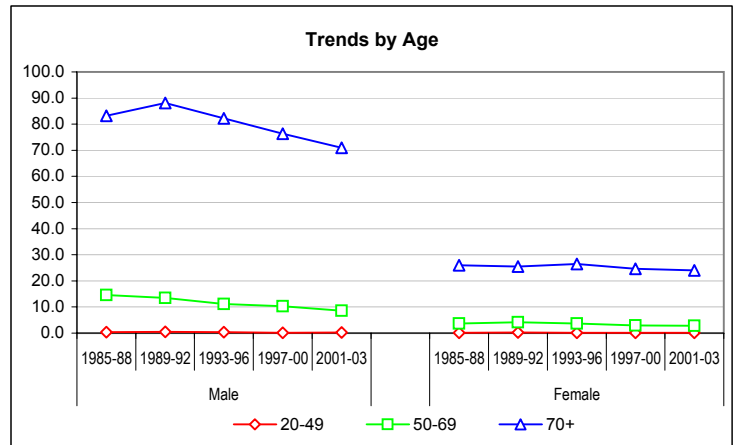
Sex	Period	Age group			Total	Yearly average
		0-49	50-69	70+		
Male	1993-96	22	315	910	1'246	311
	1997-00	10	314	897	1'221	305
	2001-03	10	207	674	891	297
Female	1993-96	8	111	482	600	150
	1997-00	8	93	469	570	143
	2001-03	7	69	363	439	146
Total	Total	65	1'108	3'794	4'967	452



Crude rates by age-group & mean annual trends

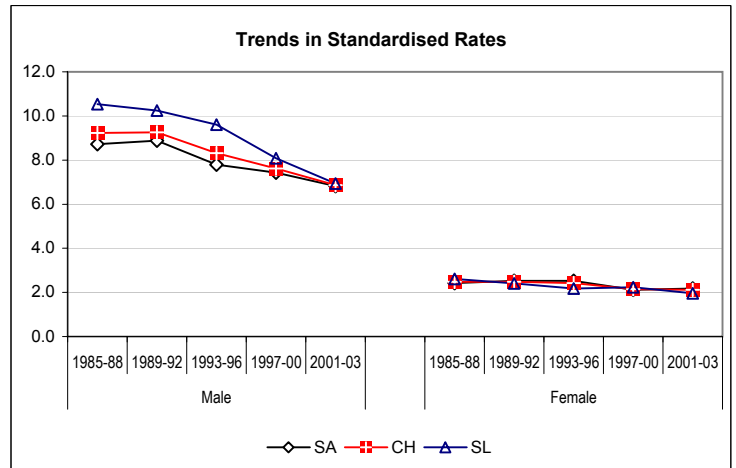
\*, \*\*: Significant variations cf. Mantel-Haenszel test (95%, 99%)  
Signification of mean annual trends not computed

Sex	Period	0-19	20-49	50-69	70+
Male	1985-88	0.00	0.33	14.60	83.16
	1989-92	0.00	0.48	13.51	88.11
	1993-96	0.00	0.34	11.19 *	82.22
	1997-00	0.03	0.14 *	10.36	76.30
	2001-03	0.00	0.21	8.60 *	70.97
Female	1985-88	0.00	0.11 *	3.72 **	26.01
	1989-92	0.00	0.21	4.15	25.46
	1993-96	0.00	0.13	3.66	26.47
	1997-00	0.00	0.13	2.92	24.57
	2001-03	0.00	0.15	2.76	24.08
Male	Annual trend		0.927	0.964	0.979
Female	Annual trend		1.018	0.960	0.986



European standardized rate by period

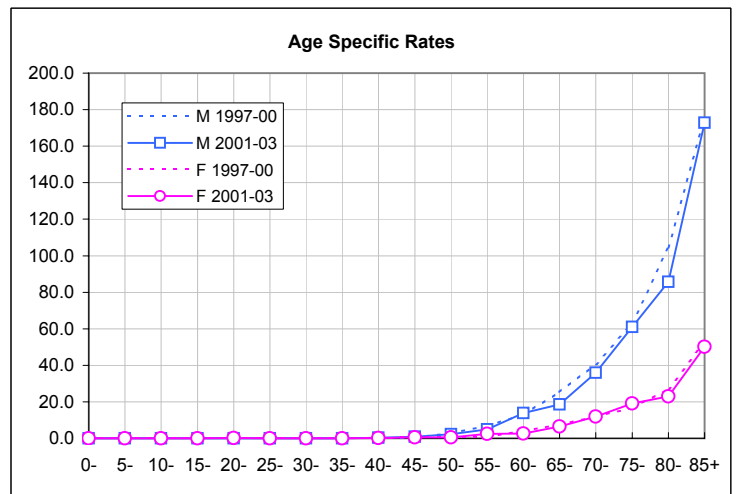
Sex	Period	SA	CH	SL	C.I. 95% of CH	
Male	1985-88	8.72	9.23	10.54	8.7	9.8
	1989-92	8.87	9.26	10.24	8.8	9.8
	1993-96	7.80	8.31	9.61	7.9	8.8
	1997-00	7.43	7.62	8.09	7.2	8.1
	2001-03	6.82	6.86	6.94	6.4	7.3
Female	1985-88	2.43	2.48	2.62	2.3	2.7
	1989-92	2.52	2.49	2.40	2.3	2.7
	1993-96	2.53	2.43	2.17	2.2	2.6
	1997-00	2.11	2.15	2.23	2.2	2.6
	2001-03	2.18	2.11	1.96	2.0	2.3
Male	Annual trend	0.982	0.973	0.955		
Female	Annual trend	0.978	0.980	0.987		



CH Switzerland  
SA Alemannic part of Switzerland: German-speaking  
SL Latin part of Switzerland: French- or Italian-speaking

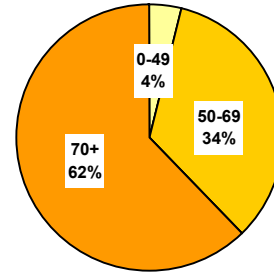
Age specific rates - last periods compared

Age	M		F	
	1997-00	2001-03	1997-00	2001-03
0-	0.0	0.0	0.0	0.0
5-	0.0	0.0	0.0	0.0
10-	0.0	0.0	0.0	0.0
15-	0.1	0.0	0.0	0.0
20-	0.0	0.0	0.0	0.2
25-	0.0	0.0	0.0	0.0
30-	0.0	0.0	0.0	0.0
35-	0.2	0.0	0.0	0.0
40-	0.1	0.3	0.3	0.2
45-	0.6	0.9	0.5	0.5
50-	2.7	2.3	0.5	0.5
55-	6.8	4.9	1.0	2.5
60-	13.0	13.8	4.0	2.6
65-	25.5	18.5	7.6	6.5
70-	40.6	35.9	12.0	11.9
75-	62.7	61.0	16.7	19.2
80-	104.5	85.7	27.1	22.9
85+	175.5	172.8	52.5	50.2
Crude rate	8.8	8.3	3.9	3.9



Number of deaths - three last periods

Sex	Period	Age group			Total	Yearly average
		0-49	50-69	70+		
Male	1993-96	44	367	549	960	240
	1997-00	36	354	513	903	226
	2001-03	32	261	420	713	238
Female	1993-96	22	189	420	631	158
	1997-00	20	173	464	657	164
	2001-03	12	111	303	426	142
Total	Total	166	1'455	2'669	4'290	390

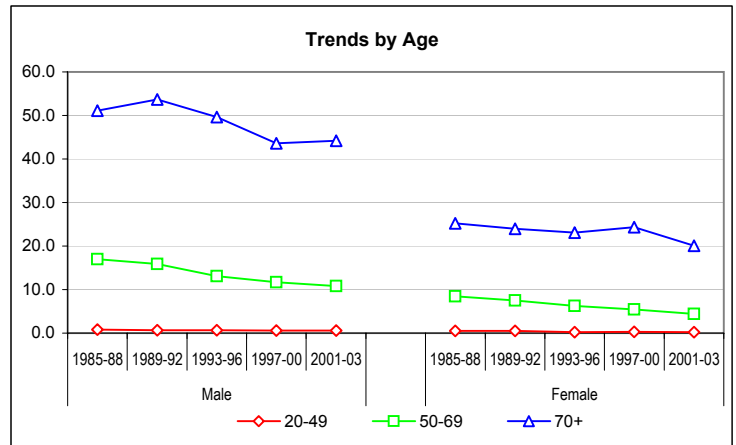


Crude rates by age-group & mean annual trends

\*, \*\*: Significant variations cf. Mantel-Haenszel test (95%, 99%)  
Signification of mean annual trends not computed

Sex	Period	0-19	20-49	50-69	70+
Male	1985-88	0.15	0.78	16.99 *	51.08 *
	1989-92	0.06	0.64	15.90	53.71
	1993-96	0.06	0.65	13.06 *	49.62
	1997-00	0.03	0.56	11.67	43.64 *
	2001-03	0.12	0.61	10.84	44.22
Female	1985-88	0.19	0.50	8.42	25.25
	1989-92	0.13	0.52	7.51	23.99
	1993-96	0.19	0.25 *	6.26	23.08
	1997-00	0.09	0.27	5.43	24.31
	2001-03	0.04	0.23	4.44	20.10 **
Male	Annual trend		0.987	0.974	0.983
Female	Annual trend		0.989	0.953	0.982

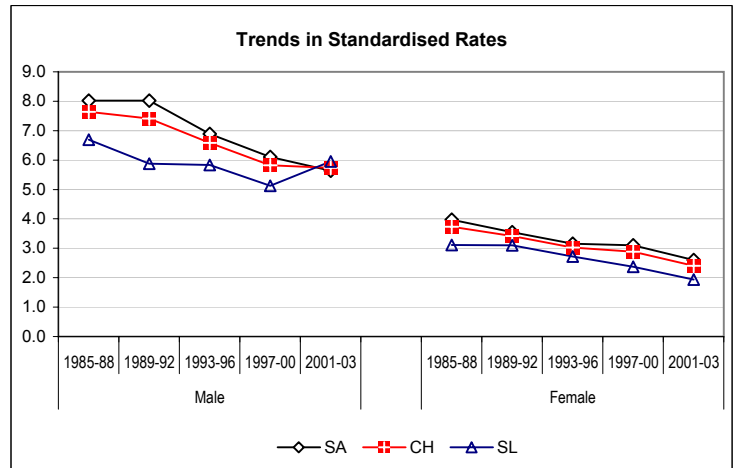
( 3 last periods )



European standardized rate by period

Sex	Period	SA	CH	SL	C.I. 95% of CH	
Male	1985-88	8.02	7.64	6.69	7.2	8.1
	1989-92	8.02	7.41	5.87	7.0	7.9
	1993-96	6.88	6.59	5.83	6.2	7.0
	1997-00	6.11	5.83	5.13	5.4	6.2
	2001-03	5.64	5.73	5.96	5.3	6.2
Female	1985-88	3.98	3.73	3.12	3.4	4.0
	1989-92	3.55	3.42	3.10	3.1	3.7
	1993-96	3.16	3.03	2.72	2.8	3.3
	1997-00	3.10	2.89	2.38	2.8	3.3
	2001-03	2.60	2.40	1.94	2.7	3.1
Male	Annual trend	0.972	0.980	1.001		
Female	Annual trend	0.974	0.969	0.953		

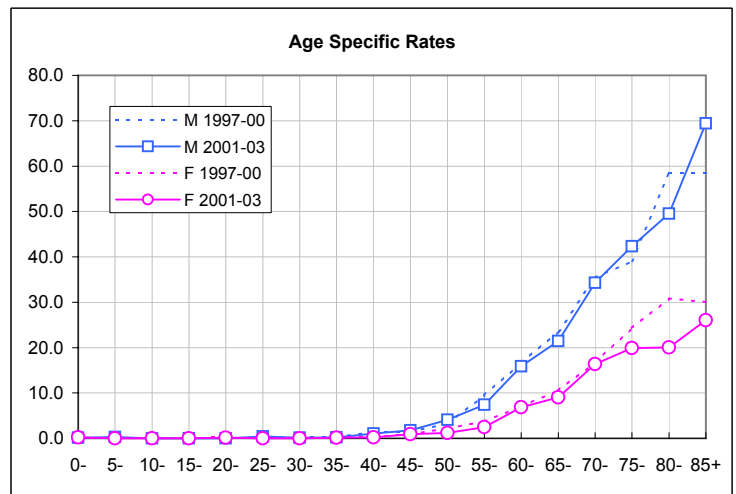
( 3 last periods )



CH Switzerland  
SA Alemannic part of Switzerland: German-speaking  
SL Latin part of Switzerland: French- or Italian-speaking

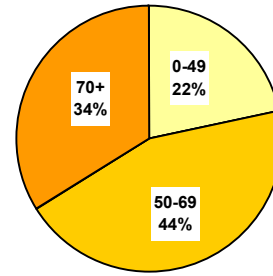
Age specific rates - last periods compared

Age	M		F	
	1997-00	2001-03	1997-00	2001-03
0-	0.1	0.2	0.0	0.2
5-	0.0	0.3	0.2	0.0
10-	0.0	0.0	0.0	0.0
15-	0.0	0.0	0.1	0.0
20-	0.0	0.0	0.2	0.2
25-	0.1	0.4	0.0	0.0
30-	0.2	0.1	0.0	0.0
35-	0.2	0.2	0.2	0.1
40-	1.4	1.0	0.4	0.2
45-	1.4	1.8	0.9	0.9
50-	3.3	4.1	2.2	1.2
55-	9.5	7.4	3.7	2.5
60-	16.6	15.9	7.0	6.9
65-	23.5	21.5	10.6	9.1
70-	35.4	34.3	16.7	16.4
75-	39.0	42.3	24.3	19.9
80-	58.4	49.6	30.8	20.0
85+	58.5	69.4	30.1	26.0
Crude rate	6.5	6.7	4.5	3.8



Number of deaths - three last periods

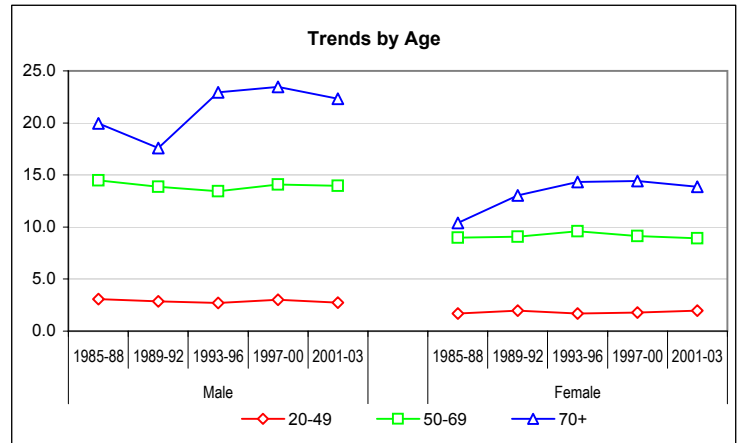
Sex	Period	Age group			Total	Yearly average
		0-49	50-69	70+		
Male	1993-96	213	378	254	845	211
	1997-00	217	427	276	920	230
	2001-03	155	336	212	703	234
Female	1993-96	128	289	261	678	169
	1997-00	126	291	275	692	173
	2001-03	113	223	209	545	182
Total	Total	952	1'944	1'487	4'383	398



Crude rates by age-group & mean annual trends

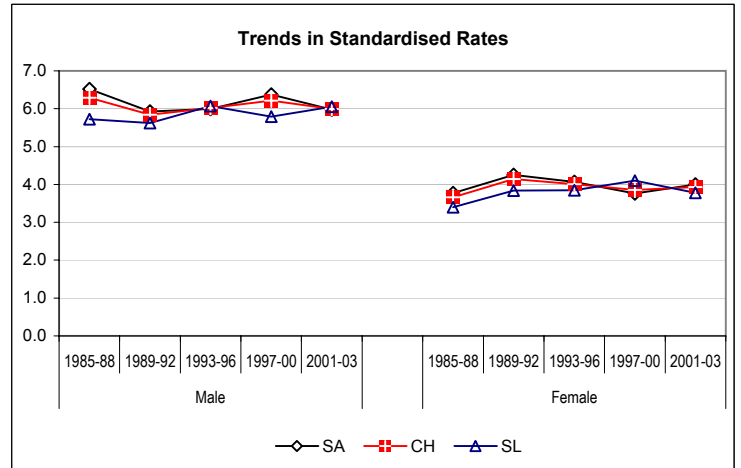
\*, \*\*: Significant variations cf. Mantel-Haenszel test (95%, 99%)  
Signification of mean annual trends not computed

Sex	Period	0-19	20-49	50-69	70+
Male	1985-88	1.37	3.07	14.49	19.95 *
	1989-92	1.33	2.86	13.87	17.59
	1993-96	1.16	2.71	13.45	22.95 **
	1997-00	0.79	3.01	14.08	23.48
	2001-03	0.95	2.73	13.96	22.32
Female	1985-88	0.99	1.69	8.98	10.40
	1989-92	1.35	1.98	9.07	13.03 *
	1993-96	0.62	1.71	9.58	14.34
	1997-00	0.47	1.77	9.13	14.41
	2001-03	0.79	1.97	8.92	13.86
Male	Annual trend (3 last periods)		1.003	1.006	0.997
Female	Annual trend (3 last periods)		1.020	0.990	0.996



European standardized rate by period

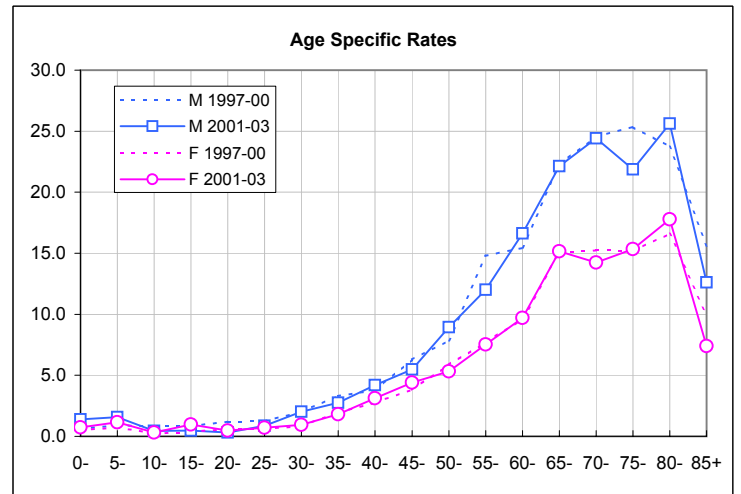
Sex	Period	SA	CH	SL	C.I. 95% of CH	
Male	1985-88	6.52	6.29	5.73	5.9	6.7
	1989-92	5.93	5.84	5.62	5.4	6.3
	1993-96	6.00	6.02	6.07	5.6	6.4
	1997-00	6.38	6.21	5.79	5.8	6.6
	2001-03	5.98	6.00	6.05	5.6	6.5
Female	1985-88	3.77	3.66	3.40	3.4	4.0
	1989-92	4.26	4.14	3.84	3.8	4.5
	1993-96	4.06	4.00	3.85	3.7	4.3
	1997-00	3.76	3.86	4.10	3.7	4.3
	2001-03	4.00	3.93	3.78	3.6	4.2
Male	Annual trend (3 last periods)	1.000	1.000	0.999		
Female	Annual trend (3 last periods)	0.997	0.997	0.998		



CH Switzerland  
SA Alemannic part of Switzerland: German-speaking  
SL Latin part of Switzerland: French- or Italian-speaking

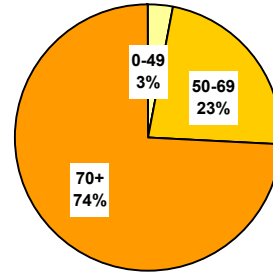
Age specific rates - last periods compared

Age	M		F	
	1997-00	2001-03	1997-00	2001-03
0-	0.6	1.4	0.5	0.7
5-	0.9	1.6	0.7	1.2
10-	0.8	0.4	0.2	0.3
15-	0.8	0.5	0.4	1.0
20-	1.2	0.3	0.6	0.5
25-	1.2	0.9	0.6	0.7
30-	2.0	2.0	0.8	0.9
35-	3.3	2.7	1.9	1.8
40-	3.8	4.2	2.7	3.1
45-	6.3	5.5	3.8	4.4
50-	7.8	8.9	5.9	5.3
55-	14.8	12.0	7.7	7.5
60-	15.4	16.6	9.6	9.7
65-	22.3	22.1	15.1	15.2
70-	24.5	24.4	15.2	14.2
75-	25.4	21.9	15.2	15.4
80-	23.7	25.6	16.6	17.8
85+	15.6	12.6	9.9	7.4
Crude rate	6.6	6.6	4.7	4.9



Number of deaths - three last periods

Sex	Period	Age group			Total	Yearly average
		0-49	50-69	70+		
Male	1993-96	6	37	62	104	26
	1997-00	4	30	59	93	23
	2001-03	2	19	45	66	22
Female	1993-96	6	37	153	197	49
	1997-00	5	28	152	185	46
	2001-03	2	31	124	157	52
Total	Total	25	182	595	802	73

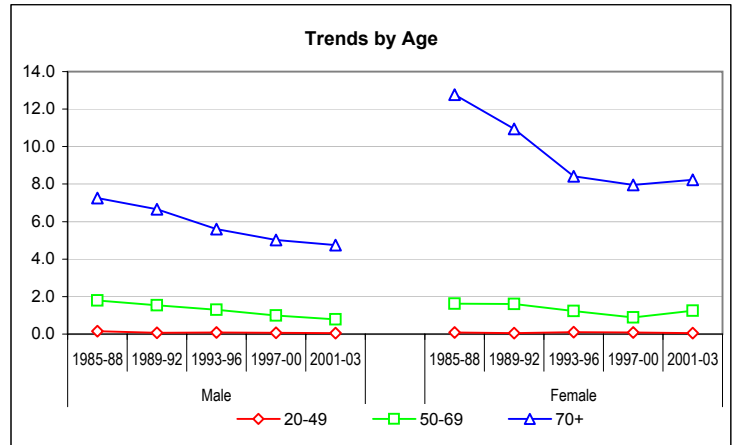


Crude rates by age-group & mean annual trends

\*, \*\*: Significant variations cf. Mantel-Haenszel test (95%, 99%)  
Signification of mean annual trends not computed

Sex	Period	0-19	20-49	50-69	70+
Male	1985-88	0.00	0.16	1.80	7.26
	1989-92	0.00	0.07	1.53	6.66
	1993-96	0.00	0.09	1.30	5.60
	1997-00	0.00	0.06	0.99	5.02
	2001-03	0.00	0.04	0.79	4.74
Female	1985-88	0.00	0.09	1.62 **	12.77
	1989-92	0.00	0.05	1.61	10.94
	1993-96	0.00	0.10	1.23	8.42 *
	1997-00	0.00	0.08	0.88	7.96
	2001-03	0.00	0.04	1.24	8.22
Male	Annual trend		0.902	0.931	0.976
Female	Annual trend		0.890	0.997	0.996

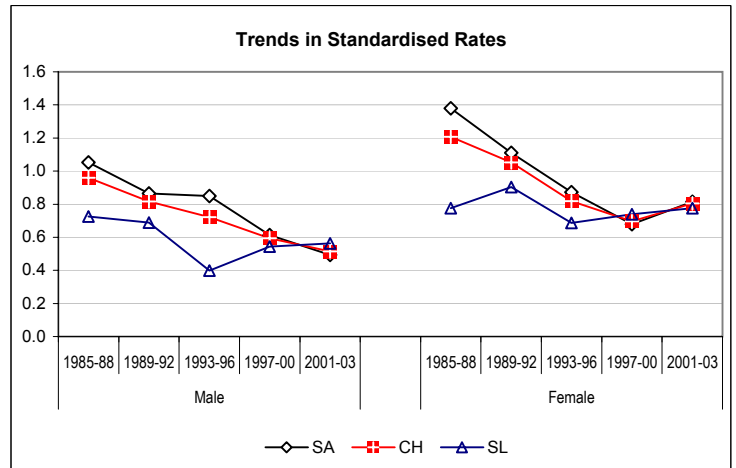
(3 last periods)



European standardized rate by period

Sex	Period	SA	CH	SL	C.I. 95% of CH	
Male	1985-88	1.05	0.96	0.72	0.8	1.1
	1989-92	0.86	0.82	0.69	0.7	1.0
	1993-96	0.85	0.72	0.40	0.6	0.9
	1997-00	0.61	0.59	0.54	0.5	0.7
	2001-03	0.49	0.51	0.56	0.4	0.7
Female	1985-88	1.38	1.21	0.78	1.1	1.4
	1989-92	1.11	1.05	0.90	0.9	1.2
	1993-96	0.87	0.82	0.69	0.7	0.9
	1997-00	0.68	0.70	0.74	0.7	0.9
	2001-03	0.81	0.80	0.78	0.6	0.8
Male	Annual trend	0.925	0.953	1.052		
Female	Annual trend	0.987	0.995	1.018		

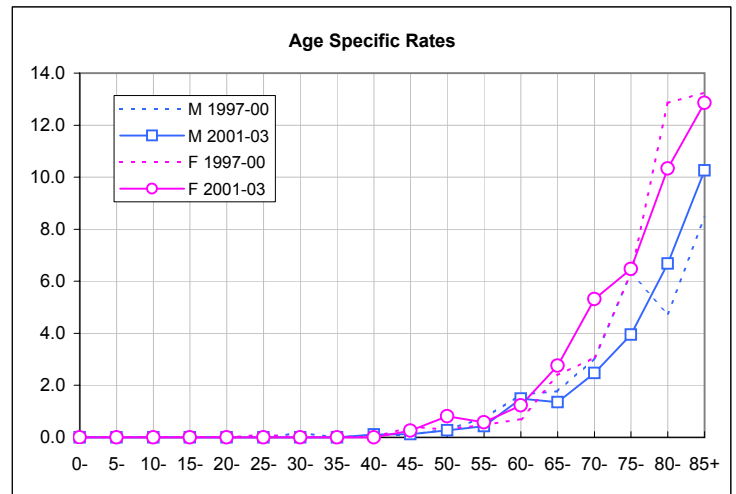
(3 last periods)



CH Switzerland  
SA Alemannic part of Switzerland: German-speaking  
SL Latin part of Switzerland: French- or Italian-speaking

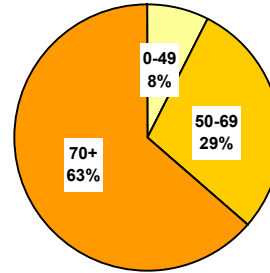
Age specific rates - last periods compared

Age	M		F	
	1997-00	2001-03	1997-00	2001-03
0-	0.0	0.0	0.0	0.0
5-	0.0	0.0	0.0	0.0
10-	0.0	0.0	0.0	0.0
15-	0.0	0.0	0.0	0.0
20-	0.0	0.0	0.0	0.0
25-	0.0	0.0	0.1	0.0
30-	0.2	0.0	0.0	0.0
35-	0.0	0.0	0.0	0.0
40-	0.1	0.1	0.0	0.0
45-	0.1	0.1	0.4	0.3
50-	0.3	0.3	0.3	0.8
55-	0.7	0.4	0.5	0.6
60-	1.6	1.5	0.7	1.2
65-	1.8	1.4	2.4	2.8
70-	3.0	2.5	3.1	5.3
75-	6.3	3.9	6.3	6.5
80-	4.7	6.7	12.9	10.3
85+	8.5	10.3	13.3	12.9
Crude rate	0.7	0.6	1.3	1.4



Number of deaths - three last periods

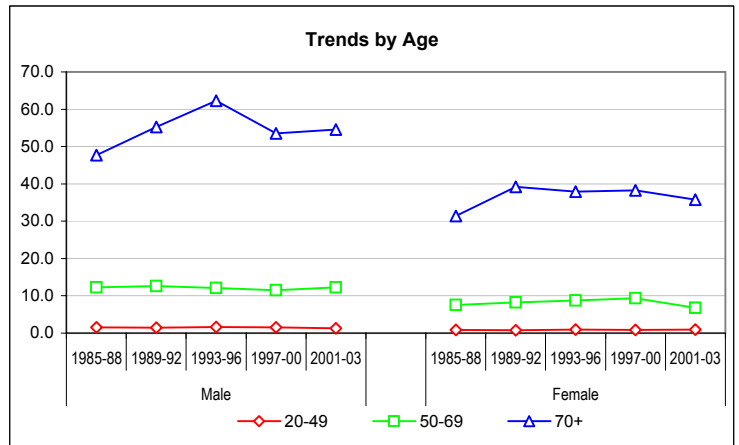
Sex	Period	Age group			Total	Yearly average
		0-49	50-69	70+		
Male	1993-96	114	339	689	1'142	286
	1997-00	97	348	629	1'074	269
	2001-03	67	296	518	881	294
Female	1993-96	68	264	690	1'022	256
	1997-00	61	298	730	1'089	272
	2001-03	46	170	540	756	252
Total	Total	453	1'715	3'796	5'964	542



Crude rates by age-group & mean annual trends

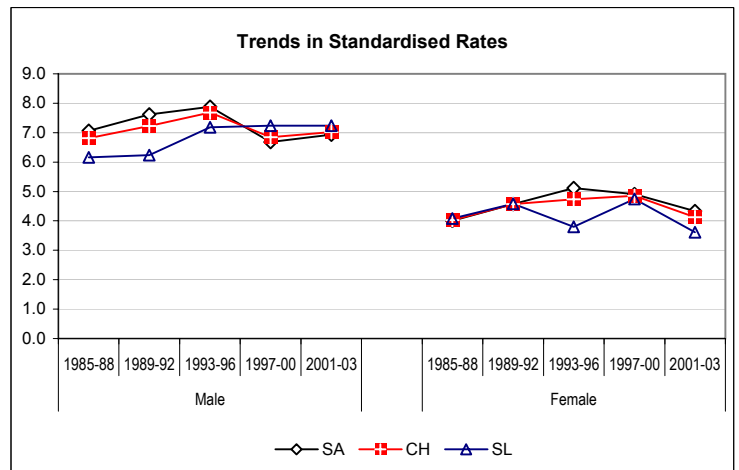
\*, \*\*: Significant variations cf. Mantel-Haenszel test (95%, 99%)  
Signification of mean annual trends not computed

Sex	Period	0-19	20-49	50-69	70+
Male	1985-88	0.67	1.51	12.29	47.69 **
	1989-92	0.22	1.50	12.62	55.25 *
	1993-96	0.30	1.62	12.06	62.28 *
	1997-00	0.06	1.51	11.48	53.50 **
	2001-03	0.20	1.29	12.30	54.54
Female	1985-88	0.10	0.86	7.53	31.44 *
	1989-92	0.13	0.80	8.24	39.22 **
	1993-96	0.19	0.98	8.74	37.92
	1997-00	0.16	0.89	9.35	38.25
	2001-03	0.08	0.92	6.80 **	35.81
Male	Annual trend		0.969	1.002	0.980
Female	Annual trend		0.991	0.968	0.992



European standardized rate by period

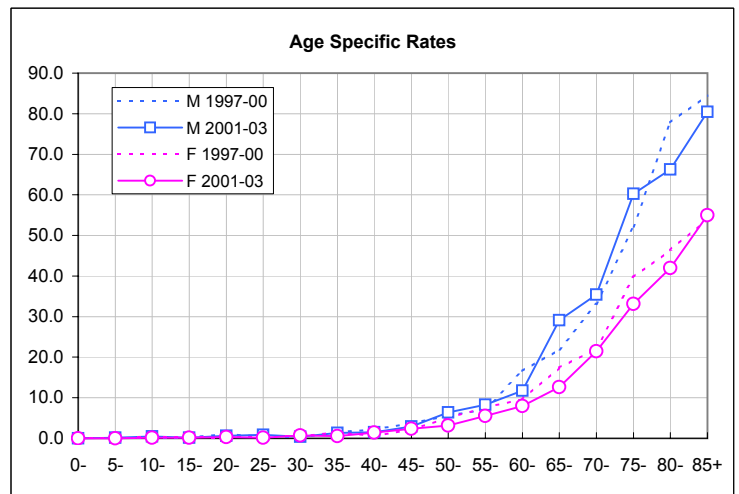
Sex	Period	SA	CH	SL	C.I. 95% of CH	
Male	1985-88	7.06	6.81	6.16	6.4	7.3
	1989-92	7.62	7.23	6.23	6.8	7.7
	1993-96	7.88	7.68	7.18	7.2	8.1
	1997-00	6.68	6.84	7.24	6.4	7.3
	2001-03	6.93	7.02	7.23	6.6	7.5
Female	1985-88	4.00	4.02	4.08	3.7	4.3
	1989-92	4.57	4.57	4.58	4.3	4.9
	1993-96	5.11	4.73	3.80	4.4	5.1
	1997-00	4.90	4.86	4.74	4.4	5.1
	2001-03	4.34	4.13	3.61	4.6	5.2
Male	Annual trend	0.981	0.986	1.001		
Female	Annual trend	0.977	0.982	0.996		



CH Switzerland  
SA Alemannic part of Switzerland: German-speaking  
SL Latin part of Switzerland: French- or Italian-speaking

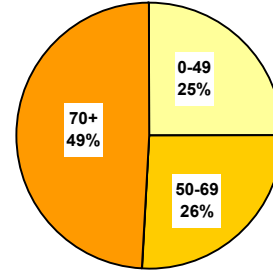
Age specific rates - last periods compared

Age	M		F	
	1997-00	2001-03	1997-00	2001-03
0-	0.0	0.0	0.0	0.0
5-	0.1	0.2	0.1	0.0
10-	0.0	0.4	0.2	0.2
15-	0.1	0.2	0.3	0.2
20-	1.1	0.6	0.1	0.3
25-	0.4	0.9	0.4	0.1
30-	0.3	0.4	0.5	0.7
35-	1.5	1.4	1.5	0.5
40-	2.2	1.5	0.6	1.4
45-	3.7	2.9	2.1	2.3
50-	5.6	6.4	5.1	3.1
55-	7.1	8.2	7.6	5.5
60-	16.6	11.8	9.6	7.9
65-	21.9	29.1	17.5	12.6
70-	33.0	35.4	22.0	21.5
75-	52.2	60.2	39.7	33.1
80-	77.9	66.3	46.3	42.0
85+	84.5	80.5	54.0	55.0
Crude rate	7.7	8.3	7.5	6.8



Number of deaths - three last periods

Sex	Period	Age group			Total	Yearly average
		0-49	50-69	70+		
Male	1993-96	34	23	41	98	25
	1997-00	14	19	29	62	16
	2001-03	4	11	25	40	13
Female	1993-96	20	23	32	75	19
	1997-00	18	10	31	59	15
	2001-03	6	13	30	49	16
Total	Total	96	99	188	383	35

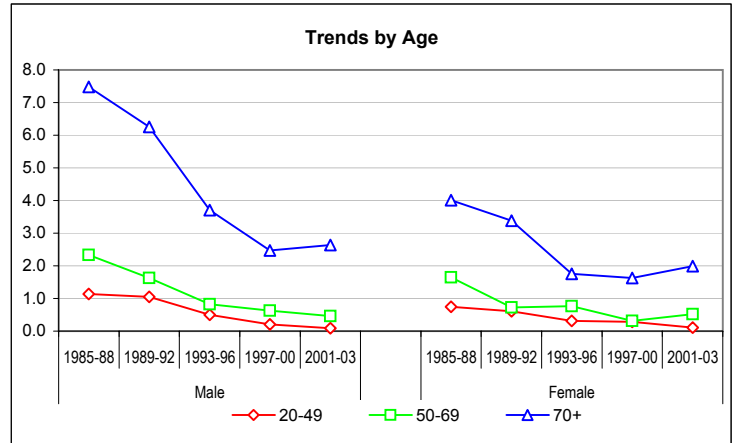


Crude rates by age-group & mean annual trends

\*, \*\*: Significant variations cf. Mantel-Haenszel test (95%, 99%)  
Signification of mean annual trends not computed

Sex	Period	0-19	20-49	50-69	70+
Male	1985-88	0.12	1.14 *	2.33	7.48
	1989-92	0.00	1.05	1.63	6.26
	1993-96	0.06	0.50 **	0.82 **	3.71 **
	1997-00	0.03	0.21 **	0.63	2.47
	2001-03	0.00	0.08	0.46	2.63
Female	1985-88	0.03	0.74	1.64	4.01
	1989-92	0.10	0.60	0.72 **	3.39
	1993-96	0.00	0.32 *	0.76	1.76 **
	1997-00	0.00	0.29	0.31 *	1.63
	2001-03	0.04	0.11 *	0.52	1.99
Male	Annual trend		0.776	0.921	0.950
Female	Annual trend		0.860	0.938	1.016

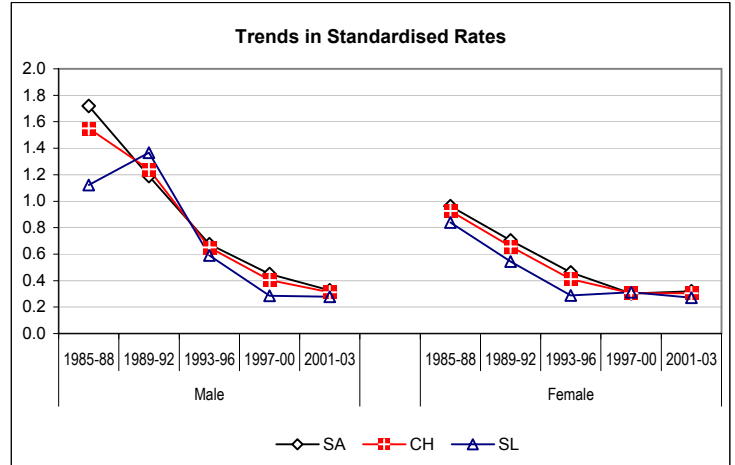
(3 last periods)



European standardized rate by period

Sex	Period	SA	CH	SL	C.I. 95% of CH	
Male	1985-88	1.72	1.55	1.12	1.3	1.8
	1989-92	1.19	1.24	1.37	1.1	1.4
	1993-96	0.67	0.65	0.59	0.5	0.8
	1997-00	0.45	0.40	0.28	0.3	0.5
	2001-03	0.33	0.31	0.28	0.2	0.4
Female	1985-88	0.96	0.93	0.84	0.8	1.1
	1989-92	0.70	0.66	0.54	0.5	0.8
	1993-96	0.46	0.41	0.29	0.3	0.5
	1997-00	0.30	0.30	0.31	0.3	0.5
	2001-03	0.32	0.30	0.27	0.2	0.4
Male	Annual trend	0.901	0.899	0.894		
Female	Annual trend	0.945	0.956	0.993		

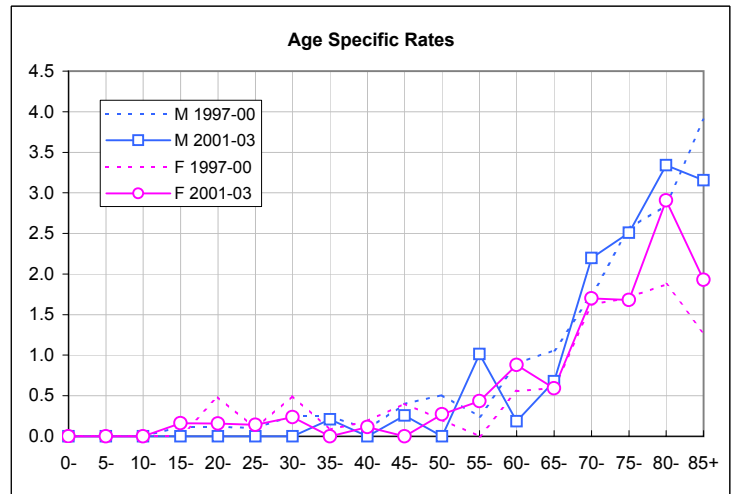
(3 last periods)



CH Switzerland  
SA Alemannic part of Switzerland: German-speaking  
SL Latin part of Switzerland: French- or Italian-speaking

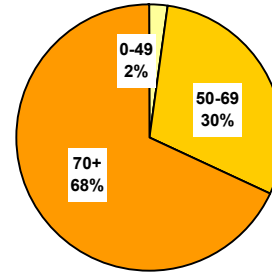
Age specific rates - last periods compared

Age	M		F	
	1997-00	2001-03	1997-00	2001-03
0-	0.0	0.0	0.0	0.0
5-	0.0	0.0	0.0	0.0
10-	0.0	0.0	0.0	0.0
15-	0.1	0.0	0.0	0.2
20-	0.1	0.0	0.5	0.2
25-	0.1	0.0	0.1	0.1
30-	0.3	0.0	0.5	0.2
35-	0.2	0.2	0.1	0.0
40-	0.1	0.0	0.2	0.1
45-	0.4	0.3	0.4	0.0
50-	0.5	0.0	0.2	0.3
55-	0.2	1.0	0.0	0.4
60-	0.9	0.2	0.6	0.9
65-	1.1	0.7	0.6	0.6
70-	1.7	2.2	1.6	1.7
75-	2.6	2.5	1.7	1.7
80-	2.8	3.3	1.9	2.9
85+	3.9	3.2	1.3	1.9
Crude rate	0.4	0.4	0.4	0.4



Number of deaths - three last periods

Sex	Period	Age group			Total	Yearly average
		0-49	50-69	70+		
Male	1993-96	17	177	371	565	141
	1997-00	12	176	345	533	133
	2001-03	9	172	300	481	160
Female	1993-96	14	164	441	619	155
	1997-00	12	165	413	590	148
	2001-03	12	97	325	434	145
Total	Total	76	951	2'195	3'222	293

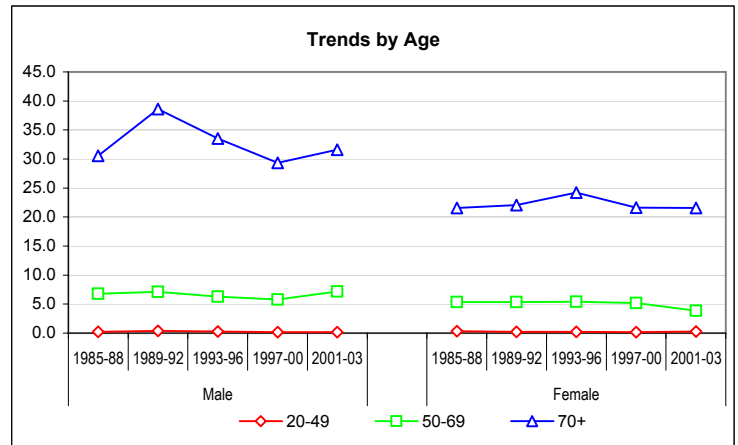


Crude rates by age-group & mean annual trends

\*, \*\*: Significant variations cf. Mantel-Haenszel test (95%, 99%)  
Signification of mean annual trends not computed

Sex	Period	0-19	20-49	50-69	70+
Male	1985-88	0.00	0.22	6.80	30.53
	1989-92	0.00	0.38	7.14	38.60**
	1993-96	0.00	0.27	6.30	33.53*
	1997-00	0.00	0.19	5.80	29.35
	2001-03	0.00	0.19	7.15	31.59
Female	1985-88	0.00	0.33	5.35	21.55
	1989-92	0.00	0.20	5.34	22.06
	1993-96	0.00	0.22	5.43	24.24
	1997-00	0.00	0.19	5.18	21.64
	2001-03	0.00	0.25	3.88*	21.56
Male	Annual trend		0.950	1.016	0.990
Female	Annual trend		1.016	0.955	0.983

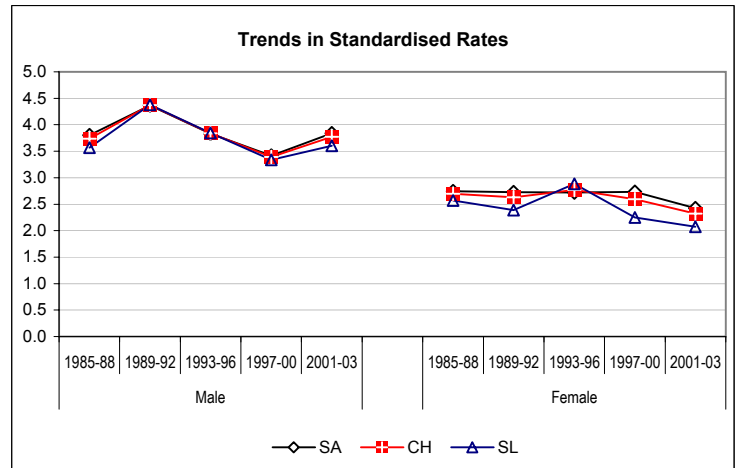
(3 last periods)



European standardized rate by period

Sex	Period	SA	CH	SL	C.I. 95% of CH	
Male	1985-88	3.80	3.74	3.57	3.4	4.1
	1989-92	4.36	4.37	4.38	4.0	4.7
	1993-96	3.84	3.84	3.84	3.5	4.2
	1997-00	3.42	3.39	3.34	3.1	3.7
	2001-03	3.84	3.77	3.60	3.4	4.1
Female	1985-88	2.74	2.69	2.57	2.5	2.9
	1989-92	2.73	2.63	2.39	2.4	2.9
	1993-96	2.72	2.77	2.88	2.5	3.0
	1997-00	2.73	2.59	2.25	2.5	3.0
	2001-03	2.43	2.32	2.08	2.4	2.8
Male	Annual trend	0.999	0.996	0.989		
Female	Annual trend	0.985	0.976	0.953		

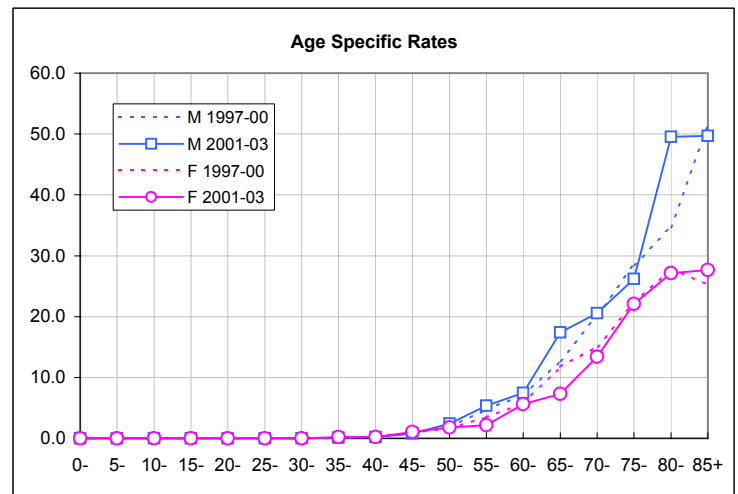
(3 last periods)



CH Switzerland  
SA Alemannic part of Switzerland: German-speaking  
SL Latin part of Switzerland: French- or Italian-speaking

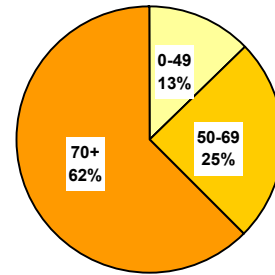
Age specific rates - last periods compared

Age	M		F	
	1997-00	2001-03	1997-00	2001-03
0-	0.0	0.0	0.0	0.0
5-	0.0	0.0	0.0	0.0
10-	0.0	0.0	0.0	0.0
15-	0.0	0.0	0.0	0.0
20-	0.0	0.0	0.0	0.0
25-	0.0	0.0	0.0	0.0
30-	0.1	0.0	0.0	0.0
35-	0.0	0.1	0.0	0.2
40-	0.3	0.2	0.2	0.2
45-	0.8	0.8	1.0	1.0
50-	1.8	2.4	1.7	1.8
55-	4.8	5.4	3.5	2.2
60-	7.0	7.5	5.7	5.6
65-	12.7	17.4	11.8	7.3
70-	20.2	20.6	15.1	13.4
75-	28.5	26.2	22.2	22.1
80-	34.7	49.6	27.9	27.1
85+	51.4	49.7	25.2	27.7
Crude rate	3.8	4.5	4.0	3.9



Number of deaths - three last periods

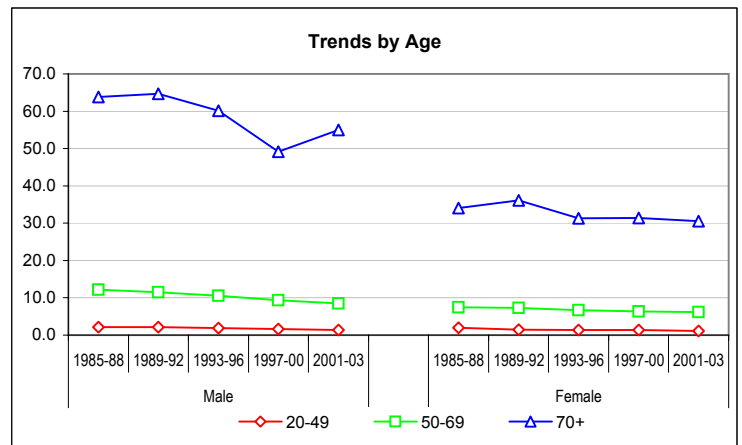
Sex	Period	Age group			Total	Yearly average
		0-49	50-69	70+		
Male	1993-96	182	296	665	<b>1'143</b>	<b>286</b>
	1997-00	131	283	578	<b>992</b>	<b>248</b>
	2001-03	94	205	522	<b>821</b>	<b>274</b>
Female	1993-96	105	201	569	<b>875</b>	<b>219</b>
	1997-00	102	201	599	<b>902</b>	<b>226</b>
	2001-03	72	154	461	<b>687</b>	<b>229</b>
Total	Total	<b>686</b>	<b>1'340</b>	<b>3'394</b>	<b>5'420</b>	<b>493</b>



Crude rates by age-group & mean annual trends

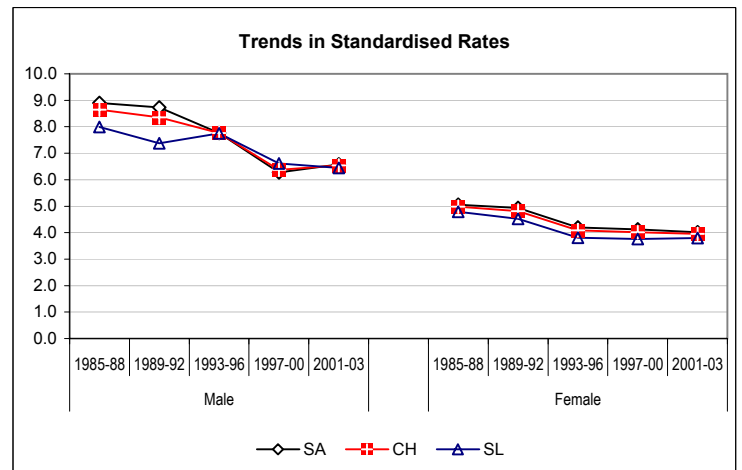
\*, \*\*: Significant variations cf. Mantel-Haenszel test (95%, 99%)  
Signification of mean annual trends not computed

Sex	Period	0-19	20-49	50-69	70+
Male	1985-88	1.70	2.15	12.17	63.85
	1989-92	1.73	2.11	11.48	64.68
	1993-96	1.79	1.90	10.53	60.11
	1997-00	0.85	1.62	9.33	49.17 **
	2001-03	1.07	1.40	8.52	54.96
Female	1985-88	1.28	1.96	7.42	34.05
	1989-92	1.36	1.43 *	7.27	36.13
	1993-96	0.63	1.34	6.66	31.27 **
	1997-00	0.56	1.34	6.31	31.38
	2001-03	0.79	1.11	6.16	30.58
Male	Annual trend		0.957	0.970	0.985
Female	Annual trend		0.975	0.989	0.997



European standardized rate by period

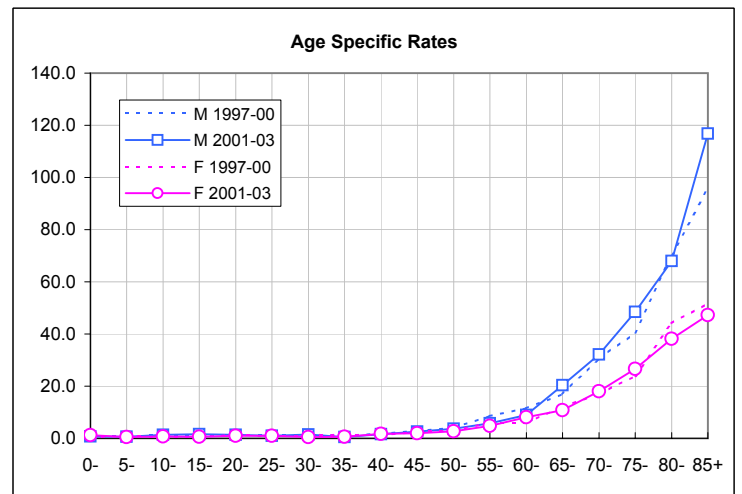
Sex	Period	SA	CH	SL	C.I. 95% of CH	
Male	1985-88	8.91	8.65	8.00	8.1	9.2
	1989-92	8.73	8.35	7.38	7.9	8.9
	1993-96	7.77	7.76	7.76	7.3	8.2
	1997-00	6.27	6.37	6.61	6.0	6.8
	2001-03	6.58	6.54	6.45	6.1	7.0
Female	1985-88	5.05	4.98	4.79	4.6	5.3
	1989-92	4.93	4.81	4.52	4.5	5.2
	1993-96	4.20	4.08	3.81	3.8	4.4
	1997-00	4.12	4.02	3.76	3.8	4.4
	2001-03	4.02	3.95	3.80	3.7	4.3
Male	Annual trend	0.975	0.974	0.973		
Female	Annual trend	0.994	0.995	1.000		



CH Switzerland  
SA Alemannic part of Switzerland: German-speaking  
SL Latin part of Switzerland: French- or Italian-speaking

Age specific rates - last periods compared

Age	M		F	
	1997-00	2001-03	1997-00	2001-03
0-	0.7	0.7	0.4	1.3
5-	0.9	0.6	0.8	0.5
10-	1.3	1.3	0.5	0.8
15-	0.5	1.6	0.5	0.7
20-	1.1	1.4	1.3	0.9
25-	1.5	1.0	0.8	1.0
30-	1.5	1.4	0.9	0.5
35-	1.0	0.5	1.4	0.6
40-	1.8	1.6	1.1	1.7
45-	2.8	2.6	2.5	1.9
50-	4.1	3.7	2.9	2.7
55-	8.6	5.8	6.0	4.8
60-	11.5	9.0	5.9	8.1
65-	17.0	20.3	12.1	10.8
70-	30.6	32.1	17.0	18.1
75-	40.5	48.4	24.0	26.6
80-	70.3	67.9	44.2	38.1
85+	95.6	116.8	51.7	47.3
Crude rate	7.1	7.7	6.2	6.1



END